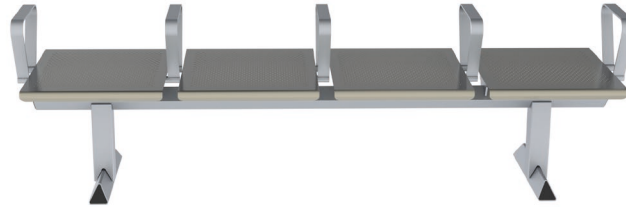


Zineare Bench





Dimensions

Seat shells

- > Perforated 2.5mm CR4 mild steel sheet, formed to shape and mechanically fixed to 6mm thick laser profile dribs.
- > Perforated 2mm 304° 240 grit polished stainless steel, formed to shape and mechanically fixed to 6mm thick laser profiled ribs.

Beam, legs & feet

- > Beam - 60x60x3mm Steel Tube EN43AP&O semibright ERW.
- > Legs – 70x70x2mm Steel Tube EN43AP&O semibright ERW.
- > Feet – 3mm thick CR4 mild steel sheet folded and welded to form an equilateral triangular section.

Ribs

- > Laser cut profiles from mild steel sheet EN43A P&O x 6mm thick.

Arms

- > Formed from 40x5mm bright drawn steel strip with rounded edges to B.S6323part5.

Paint

For internal applications:

- > Textured Epoxy Polyester Powder
- > Metallic Silver Thickness: 70 - 80 microns

For external applications:

- > Zinc Electroplate without passivation
- > Two Pack Chromate-Free Etch Primer
- > Textured Metallic Silver Thickness: 70 - 80 microns
- > Cross-cut tests: BS EN ISO 2409:2013 - ISO Class 0

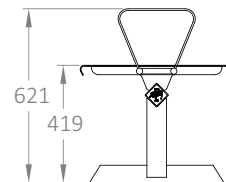
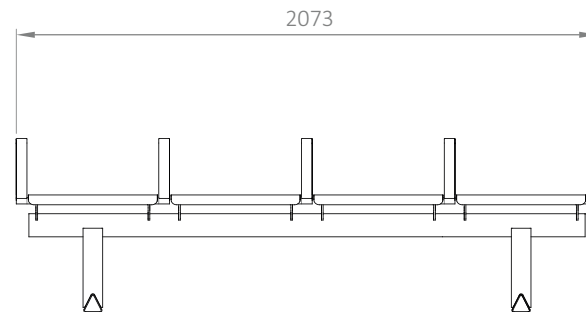
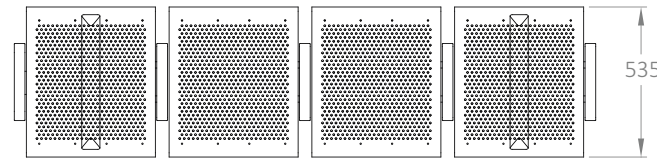
Strength rating

EN12727 Test Level 4 (severe contract use)

Fire Standards

- > B.S5852:2006
- > Assessment of the ignitability of upholstered seating by smoldering and flaming ignition sources.
- > Section 4: Methods of test for the ignitability of upholstered composites ignition source 0, 1 & 5.

Technical Specifications



Functional Specifications

The versatile and robust Zineare demonstrates hard-wearing can be also good-looking. A very strong model, manufactured in coated mild steel or brushed stainless steel. Flexible and durable; it comes with table, seat and bench options and is available in a variety of finishes. Zineare Bench can be used in many different ways: indoors, outdoors, light-to-moderate or extremely heavy use.

> Zineare is a flexible and durable seating system. It can include tables, seat and bench options and is available in a variety of finishes.

> Zineare is intended for areas which see a great deal of long-term use, and its robustness and durability mean it requires very little by way of maintenance.

> Tops are available in a choice of powder coated mild steel or brushed stainless steel, bench front and back edges are roll formed for safety and comfort. Panels are perforated with small holes to allow for drainage, facilitate ventilation and create an attractive pattern. Benches can be installed with or without arms to all positions.

> Beam is fabricated from 60mm Square Steel tube which is welded to the legs made from 70mm square steel tube, these are in turn welded to the feet made from triangular section tube. Beam assemblies are powder coated for protection. Feet are fitted with nylon glides if freestanding.

> Beam assemblies, mild steel seat shells and arms are pre-treated and silver metallic powder coated. For exterior applications components are zinc electroplated, etch primed and powder coated. We recommend only Stainless steel seat shells are used in exterior applications.

> The Zineare system it's shipped in very few component parts and sub-assemblies; beam, seats / tables and arms, which makes the process of assembly quick and straight forward.

> Tables and chairs can be interchanged and fitted back to back, and installed with or without arms; rows can be as short as two seats and as long as seven, and tables can be added anywhere in a row to respond quickly and flexibly to altered floor layouts.

> The seats' backs are available as powder-coated perforated mild or brushed stainless steel, with or without plain upholstery or veneered plywood.

> Cleaning Zineare is very easy and can be undertaken with no specialist products or expertise. Zineare's minimal footprint and slim design also mean that floor cleaning is not hindered.

Zineare Bench

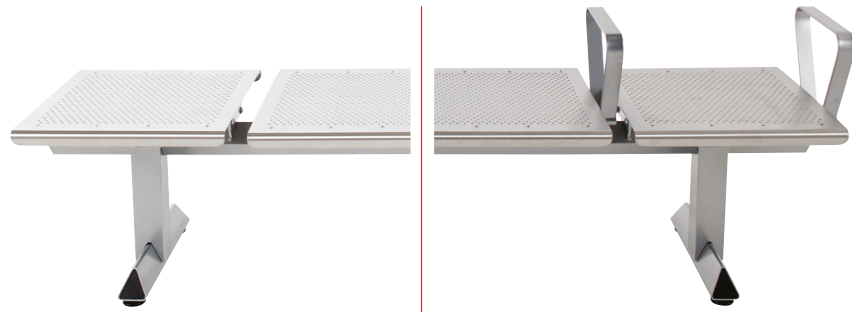
Accessories

Arms

Fabricated from bright drawn steel strip with rounded edges, formed to shape, welded to mounting bosses and powder coated for protection. Custom colours are available on request.

Spacerbars

Available for maintaining the correct distance between seat rows when placed back to back. These integrate seamlessly into the design of the product, making them as inconspicuous as possible and are powder coated to match the structural steelwork.



Perforated mild steel bench, no arms

Perforated brushed stainless steel, with arms

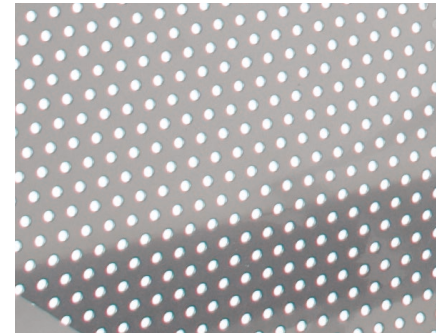
Tables

Fabricated from a choice of powder coated mild steel or brushed stainless steel, table front and back edges are roll formed for safety and comfort. Panels are perforated with small holes to allow for drainage, facilitate ventilation and create an attractive pattern.



Perforate mild steel full table

Materials



Perforated mild steel, powder coated silver (available in any RAL colour)



Perforated brushed stainless steel

Foot detail



Free standing skid leg