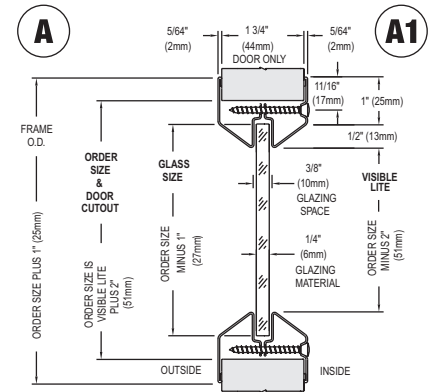
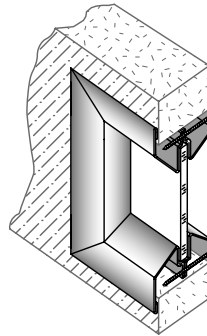


ANEMOSTAT STAINLESS STEEL VISION FRAMES

LOPRO LOW PROFILE METAL VISION PANEL – TO SUIT 44-46MM THICK DOOR & 6MM THICK GLASS

The standard LoPro shown on pages 74-75 is galvanised mild steel, grey primed ready for powder coating. The LoPro is also available in stainless steel Grade 304 #4 satin finish in the sizes below from stock, and in Grade 316 #4 satin finish to special order.

- Material: Grade 304 (and 316 stainless steel to special order).
- Finish: #4 satin finish as standard. Polished available.
- Door thickness: For 44-46mm Metal or Timber doors.
- Glass thickness: LoPro-IS suits other door and glass thicknesses. 6mm as standard. Glass pocket of 10mm allows for glazing tape or compound to be used on one or both sides of the glass.
- Aesthetics: Tight mitred corners, bevelled glass stop and low profile, provide a clean tapered look, concealed fixing one side only.
- Fire ratings: Refer to page 74.



PROFILES AA1
A = Blind side A1 = Screw hole side

Standard rectangles and circles to suit 44-46mm door and 6mm thick glass – satin stainless steel Grade 304

PRODUCT REF.	SIZE IN INCHES W X H	CUTOUT MM W X H	CLEAR VISION MM W X H	GLASS SIZE MM (NOT INCLUDED)
LOPRO-SS 0722	7 x 22	178 x 559	127 x 508	151 x 532
LOPRO-SS 0730	7 x 30	178 x 762	127 x 711	151 x 735
LOPRO-SS 0820	8 x 20	203 x 508	152 x 457	176 x 481
LOPRO-SS 0830	8 x 30	203 x 762	152 x 711	176 x 735
LOPRO-SS 1010*	NEW 10 x 10	254 x 254	203 x 203	227 x 227
LOPRO-SS 1014	10 x 14	254 x 356	203 x 305	227 x 329
LOPRO-SS 1022*	NEW 10 x 22	254 x 559	203 x 508	227 x 532
LOPRO-SS 1030*	NEW 10 x 30	254 x 762	203 x 711	227 x 735
LOPRO-SS 1048	10 x 48	254 x 1219	203 x 1168	227 x 1192
LOPRO-SS 1060	10 x 60	254 x 1524	203 x 1473	227 x 1497
LOPRO-SS 1212	12 x 12	305 x 305	254 x 254	278 x 278
LOPRO-SS 1818	18 x 18	457 x 457	406 x 406	430 x 430
LOPRO-SS 1822	NEW 18 x 22	457 x 559	406 x 508	430 x 532
LO-FP-12-SS	12" dia	305	254	278
LO-FP-18-SS*	18" dia	457	406	430
LOPRO-IS-SS 1212 EE1 NEW	12 x 12	305 x 305	254 x 254	278 x 278

Other sizes available from 102 x 102mm up to 813 x 1829mm cut-out in door.

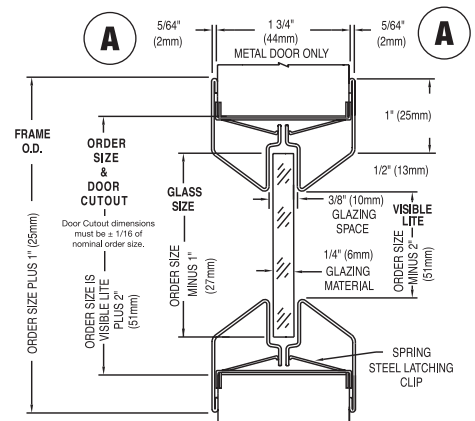
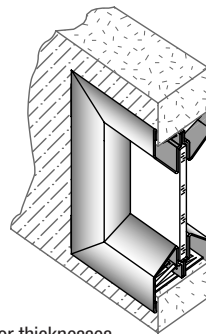
ANEMOSTAT KLIP TOGETHER FRAMES

LOPRO-K KLIP TOGETHER METAL VISION PANEL – TO SUIT 44MM THICK DOOR & 6MM THICK GLASS ONLY

The LoPro-K is quicker to install than screw type kits and provides a low profile, “flush to the door look”. It installs with unique spring steel clips that affix to the perimeter of the door cut out. Each side of the vision frame is then snapped into the cut out, fastening itself to the internal clip, thus eliminating the need for any visible fasteners or screws. This adds security and gives a cleaner, more aesthetic appearance.

This kit only suits 44mm thick doors & 6mm glass. **NOT FIRE RATED.**

- Material: 20GA. Cold rolled steel.
- Finish: Galvanised Grey Primed as standard, other finishes available to special order.
- Door thickness: For 44mm Metal or Timber Doors. LoPro-K does not suit other door thicknesses.
- Glass thickness: 6mm as standard. Glass pocket of 10mm allows for glazing tape or compound to be used on one or both sides of the glass.
- Aesthetics: Tight mitred corners, bevelled glass stop and low profile, provide a clean tapered look with no screw holes on either side of the door.



PROFILES AA
A = Blind side

Klip together rectangles and circles to suit 44mm door and 6mm glass – galv grey primed

PRODUCT REF.	SIZE IN INCHES W X H	CUTOUT MM W X H	CLEAR VISION MM W X H	GLASS SIZE MM (NOT INCLUDED)
LOPRO-K 1022*	10 x 22	254 x 559	203 x 508	227 x 532
LOPRO-K 1030*	10 x 30	254 x 762	203 x 711	227 x 735
LOPRO-K 1212*	12 x 12	305 x 305	254 x 254	278 x 278
LOPRO-K 1818*	18 x 18	457 x 457	406 x 406	430 x 430
LOPRO-K 2020*	20 x 20	508 x 508	457 x 457	481 x 481
LOPRO-K 2030	20 x 30	508 x 762	457 x 711	481 x 735
LOPRO-K 2432	24 x 32	610 x 813	559 x 762	583 x 786
LOPRO-K FP-12*	12" dia	305	254	278
LOPRO-K FP-18*	18" dia	457	406	430
LOPRO-K FP-24*	24" dia	610	559	583
LOPRO-K KLIP	Spare clip	-	-	-

Other sizes available from 102 x 102mm up to 813 x 1829mm cut-out in door.