

DOOR HOLDERS

Combination floor fixing cylindrical door holder with lock down facility. Operates as a conventional doorstop, or holds the door open by depressing, passing the door over it and releasing. Manufactured from grade 316 satin stainless steel. Supplied complete with multi purpose rawl plugs and stainless steel screws. The buffer can be locked down to become inoperative by depressing and a quarter turn.

Faceplate 45x45x2.5mm. Cylinder 32mm dia x 52mm.

Z335 satin stainless steel (Box Qty 1)



Combination floor fixing cylindrical door holder (no lock down facility). Operates as a conventional doorstop, or holds the door open by depressing, passing the door over it and releasing. Manufactured from grade 316 satin stainless steel. Supplied complete with multi purpose rawl plugs and stainless steel screws. Tested to 100,000 cycles.

Faceplate 45x45x2.5mm. Cylinder 32mm dia x 52mm.

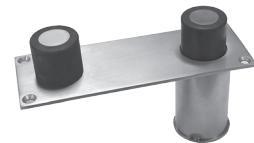
Z345 satin stainless steel (Box Qty 1)



Cylindrical door stop and holder (no lock down facility) to suit doors up to 55mm thick. Holds the door open between the stops by depressing the first stop, passing the door over it and releasing. Manufactured from grade 316 satin stainless steel. Supplied complete with multi purpose rawl plugs and stainless steel screws.

Faceplate 125x45x2.5mm. Cylinder 32mm dia x 52mm.

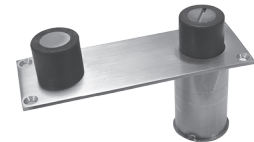
Z370 satin stainless steel (Box Qty 1)



Cylindrical door stop and holder with lock down facility to suit doors up to 55mm thick. Holds the door open between the stops by depressing the first stop, passing the door over it and releasing. Manufactured from grade 316 satin stainless steel. Supplied complete with multi purpose rawl plugs and stainless steel screws. The buffer can be locked down to become inoperative by depressing and a quarter turn.

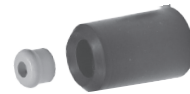
Faceplate 125x45x2.5mm. Cylinder 32mm dia x 52mm.

Z390 satin stainless steel (Box Qty 1)



Two-part door buffer and holder. The main dark grey rubber part fixes to the door restraint or wall, and the small grey nylon insert plug fits to the outside of the door. The plug engages in the main part and holds the door open until released. 60mm projection, 40mm diameter base.

Z440 dark grey rubber/grey nylon insert (Box Qty 10)



Foot operated door holder to mount at bottom of door and hold open the door when depressed. Door released by foot operation. Satin nickel plated finish.

Z920-SNP satin nickel plated (Box Qty 1)



Black iron birds beak door holder. Sometimes also called a gravity door holder or an automatic door catch. Main part fixes to restraint or wall, and small hook fits to outside of door. The main part rides up over the hook and holds the door open until released.

Z1402 (582) black (Box Qty 10)



Pipe stop and holder of heavy duty construction for use in schools, institutions etc. All stainless steel components with rubber buffer. Floor portion is solid 25mm diameter x 280mm long stainless steel rod which is secured in cement. The rubber bumper plate is fixed to the door and hits the floor mounted pipe when used as a stop. The door is hooked to the floor portion with stainless steel hook when used as a holder. The door hook rotates out of the way when not in use.

Z1804 stainless steel US32D (Box Qty 1)



Hook and eye gravity door holder. Main part fixes to restraint or wall, and small hook fits to outside of door. The main part rides up over the hook and holds the door open until released.

Z2108 satin chrome plated brass (Box Qty 10)

