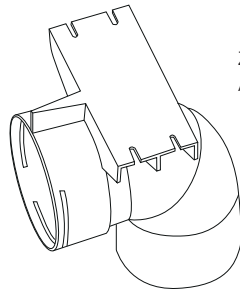
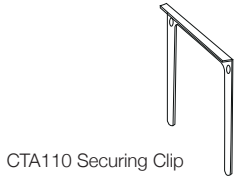


CTA110 Adaptor

'First Fix' Installation Guide

Packaging Includes:



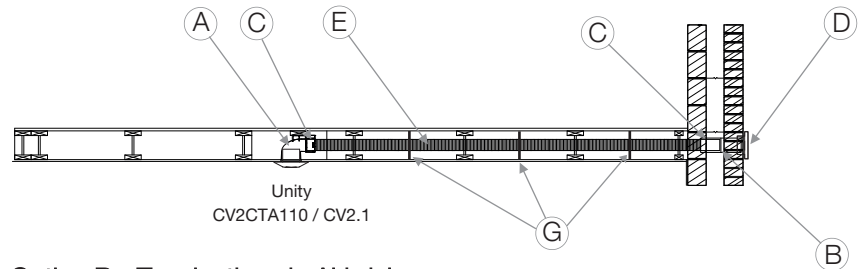
This is the 'first fix' guidance for installing the Unity CV2CTA110 / Unity CV2.1 in conjunction with Zehnder's 110mm Semi-rigid ComfoTube ducting to comply with the BRE requirements regarding the Standard Assessment Procedure, as featured on PCDB under Greenwood, Unity CV2CTA110 / Unity CV2.1

Termination to Wall

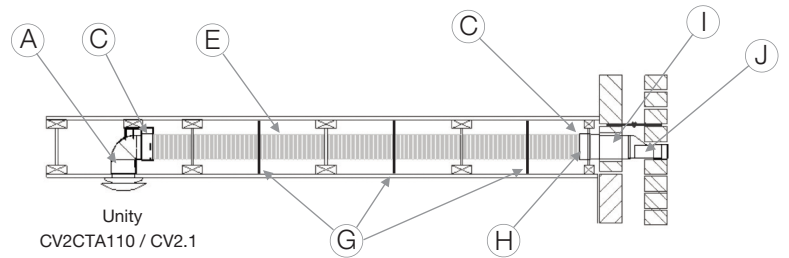
Installation Components required:

- (A) CTA110 Adaptor with Clip
- (B) ComfoTube 110mm Connector
- (C) 110mm O-Ring Seal
- (D) GG82 Grille
- (E) Zehnder ComfoTube Ø 110mm
- (G) Perforated Support Banding
- (H) CTC110 Connector with Clip
- (I) GD413.CT 100mm Duct
- (J) GD807.CT Adaptor + Airbrick
(Airbrick options: GDA8S.CT or GDA8T.CT)

Option A - Termination via Louvre



Option B - Termination via Airbrick



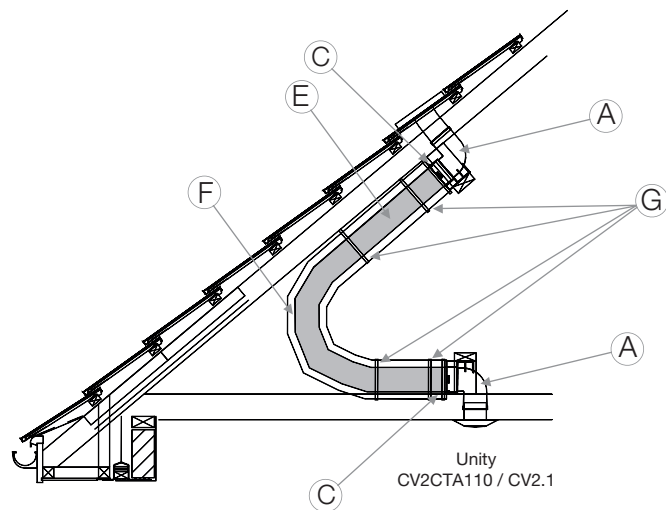
- 1 Cut joists and core wall for ComfoTube route without affecting the structural integrity, we recommend using a 127mm hole saw for ease of fitting.
- 2 Measure and cut the 110mm Zehnder ComfoTube using a medium size hacksaw, ensure you make a straight cut and allow some extra to avoid risk of cutting too short.
- 3 Option A - Termination via Louvre: Using a small amount of liquid to aid fitment, place an O-Ring Seal over the second rib of the tube and push fit into the connector and align flush with the wall surface opening.
Option B - Termination via Airbrick: Secure to the airbrick the airbrick adaptor, 100mm pipework and finally the CTC110 connector and fix using nonhardening sealant.
- 4 Option A - Termination via Louvre: Secure external grille taking care to push fit over connector.
Option B - Termination via Airbrick: Pull ComfoTube into position, remove CTC110 clip and using a small amount of liquid to aid fitment, place an O-Ring Seal over the second rib of the tube, push fit it into the CTC110 connector and secure with clip.
- 5 Mark CTA110 adaptor position so that the fan aperture is nearly finished flush with plasterboard ceiling line, prepare and fix a wooden batten to take up any variance in ceiling void depth.
- 6 Pull ComfoTube into position, remove CTA110 clip and temporarily place adaptor to fixing location to identify final duct length, note you will need 48mm to be engaged into connector (approx. 4 tube ribs) Cut off any excess and secure ComfoTube with perforated banding at ≤1000mm distance points.
- 7 Using 4 screws, fix CTA110 adaptor securely to wooden batten, using a small amount of liquid to aid fitment, place an O-Ring Seal over the second rib of the tube, push fit into the CTA110 adaptor and secure with clip.

First fix ducting is now ready for installation of Unity CV2CTA110

Termination to Roof

Installation Components required:

- (A) 2 x CTA110 Adaptor with Clip
- (C) 110mm O-Ring Seal
- (E) Zehnder ComfoTube Ø 110mm
- (F) Insulated Ducting Sleeve Ø 125mm
- (G) Perforated Support Banding



- 1 Mark the routing of the ComfoTube through the loft space to the position of the roof terminal (with minimum free area of 7,500mm²).
- 2 Measure and cut the 110mm Zehnder ComfoTube using a medium size hacksaw, ensure you make a straight cut and allow some extra to avoid risk of cutting too short.
- 3 Fit 125mm insulated ducting sleeve over the entire tube.
- 4 For tile vent termination, mark CTA110 adaptor position in alignment with the tile vent terminal and prepare a wooden support batten to ensure that the adaptor is adequately supported and fits correctly to the tile vent.
- 5 For ceiling termination, mark CTA110 adaptor position so that spigot for fan is nearly flush finished with plasterboard ceiling line and prepare a wooden support batten to take up any variance in ceiling void depth.
- 6 Place the insulated ComfoTube over the ceiling joists from the ceiling fan position to the tile vent position.
- 7 Pull ComfoTube into position, remove CTA110 clips and temporarily place adaptors to fixing location to identify final duct length, note you will need 48mm to be engaged into each connector (approx. 4 tube ribs).
- 8 Cut off any excess and secure ducting with perforated banding at ≤ 1000 mm distance points. We recommend one or two immediate fixings near adaptors on ceiling and roof sides to offer good support.
- 9 Fix CTA110 adaptors securely to wooden support batten, using a small amount of liquid to aid fitment, place an O-Ring Seal over the second rib of the tube, push fit into the CTA110 adaptors and secure with clip.

First fix ducting is now ready for installation of Unity CV2CTA110

Zehnder Group UK Limited

Watchmoor Point, Camberley,
Surrey, GU15 3AD

Customer Services: +44 (0) 1276 408404
Technical Services: +44 (0) 1276 408402
Email: info@greenwood.co.uk
Web: www.greenwood.co.uk
Web: www.zehnder.co.uk

05.10.1058 Issue 3 – June 2022