

# Anstey Hall

Ventilation solutions for residential dwellings

**zehnder**

always the  
best climate

Heating

Cooling

Fresh Air

Clean Air



# Anstey Hall in Cambridgeshire

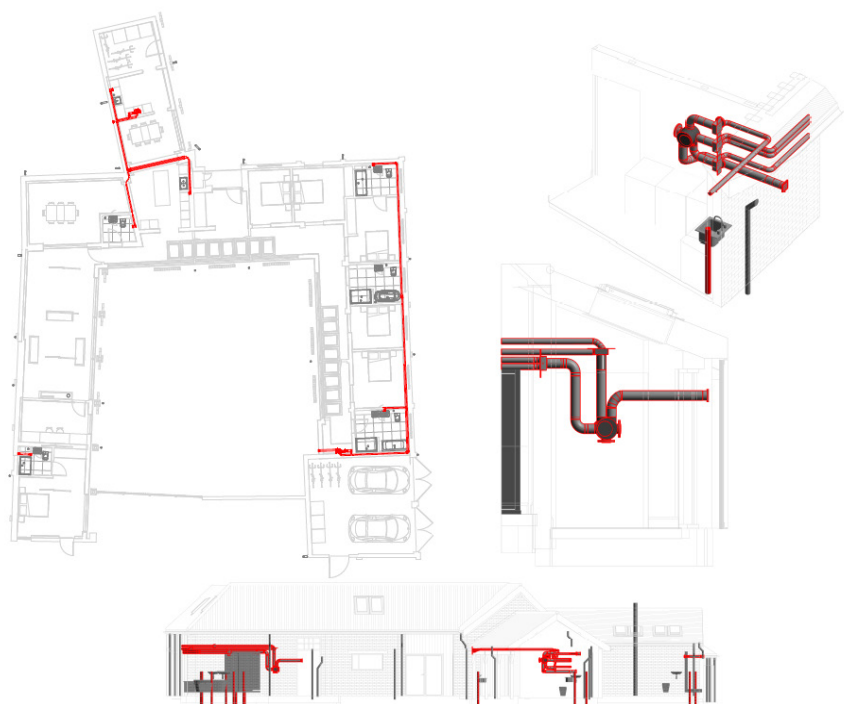


Located on the western edge of the beautiful village of Trumpington in Cambridge, Anstey Hall is a family owned Grade I listed venue, dating back to the 17th Century. Until recently, the Hall's agricultural buildings in the surrounding grounds have lain derelict and redundant. Recently planning permission was granted to convert these Grade II listed buildings into eight barn conversions and four new-build homes, creating a suite of spacious four and five bedroom properties.

## Objectives and challenges

With Grade II listing applying to the derelict buildings, the building developers faced the challenge of producing stunning results without breaching the structures' protected status. The goal for the properties was to transform them into energy efficient houses, maximising comfort for the inhabitants and meeting all relevant Regulations.

Any systems requiring significant installation work or considerable and regular maintenance would not be suitable for the project. With this in mind, it was vital that Hill Bespoke Ltd chose a ducting and ventilation system which was adaptable, easy to install and maintain, and met specific standards in terms of energy and long term performance.



design drawings and layouts:

### Key considerations in design and product specification

- **Flexibility:** Finding ducting routes to fit within the existing structure of the derelict buildings in a simple and most cost effective manner
- **Quality:** Minimise risk of poor workmanship and eliminate issues post installation
- **Building Regulations:** Reducing noise and achieving correct ventilation outputs

# Anstey Hall in Cambridgeshire



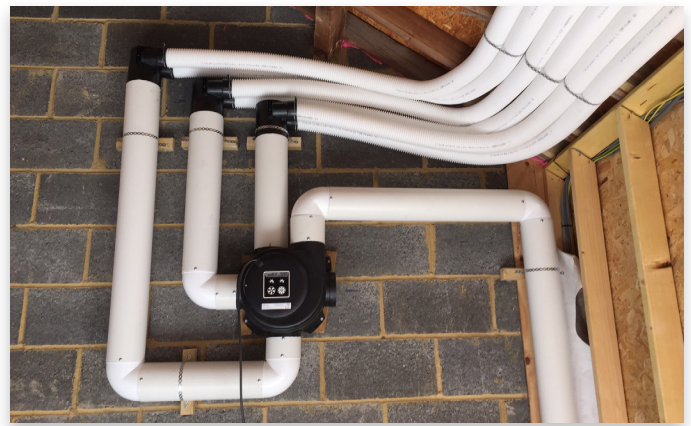
## The solution

Mike Beckett, Director of Hill Bespoke, had previously used Zehnder products and services and was aware of their reputation in providing high quality, easy to install and energy-efficient solutions. Having approached Zehnder with this project and the needs of the existing structure, he was introduced to an MVHR system that used ComfoTube ducting : a semi-rigid design with a radial distribution design.

Mike was impressed by its ability to contribute to noise reduction due to its management of airflow as well as the reduction in energy performance across the entire ventilation system due to lower pressures. This, combined with the speed and flexibility of the installation process, convinced Mike that ComfoTube ducting was the perfect solution for the Anstey Hall Barn properties.

The speed and flexibility of the installation process was also praised by those working on the project, with the plumbing team expressing how impressed they were with the products and how simple they were to install.

Since semi rigid ducting can be weaved in and around joists and the building structure, the



ComfoTube system required the minimal amount of connection points. Not only does this mean less leakage throughout the system, but a massively reduced installation time on site. The installation team and project managers were so impressed by the products and the installation process, that they have already made enquiries about using ComfoTube ducting for other projects.

## Testimonial:

*"This project required ducting that not only met all the required standards and targets in terms of noise reduction, air changes and efficiency, but would also have the flexibility to fit in with a complex building structure. Having used Zehnder's ComfoTube ducting and ventilation units on this project, I'm confident I won't use any other system in the future. It met and surpassed all of our criteria and the installation was simple and cost-effective. We couldn't ask for anything more."*

**Mike Beckett, Director, Hill Bespoke Ltd**

# Anstey Hall in Cambridgeshire



ComfoTube ducting from Zehnder provides a revolutionary option for ventilation systems in new homes. Since the ducting is as important as the unit itself, its innovative design helps ensure the correct ventilation rates can be achieved easily without excess noise or energy usage.

## Key advantages:

- Radial Approach - Dedicated duct for each room ensuring that the exact airflow required is delivered
- Noise Reduction – due to lower resistance around the ducting network, the MVHR unit can run at lower speeds to deliver the correct airflow rates – this can reduce noise by up to 10% throughout the system
- Semi-rigid, so it can be bent around joists and does not require T pieces or 90° bends
- Each room requires just two connection points which dramatically reduces the risk of leakage around the entire system
- Lightweight, flexible and robust, it can easily go around or over on-site obstructions
- With a ring stiffness greater than 8kN/m<sup>2</sup>, it can withstand the weight of a person without distortion and can be buried in concrete
- Its unique mechanical fixing and locking system means ComfoTube ducting does not require sealants, ensuring quicker, better performing and cost-effective installation
- Can reduce installed noise levels and energy consumption due to reduced pressure around the ducting system

