



Gravity roof ventilator **HEATMOVER S**

Technical specifications | Material specification | Accessories | Installation details | References



Technical Specifications

Width of individual unit: max. 2200 mm (1500 mm roof opening)

Length of individual unit: max. 3000 mm

Height: approx. 1300 mm

- Inherently stable design of aluminium with integrated blades
- Blades: streamline design
- Interlinked rotary flap type setting linkage
- Rotary flaps with setting lever for manual, electrical or pneumatic adjustment

Material Specifications

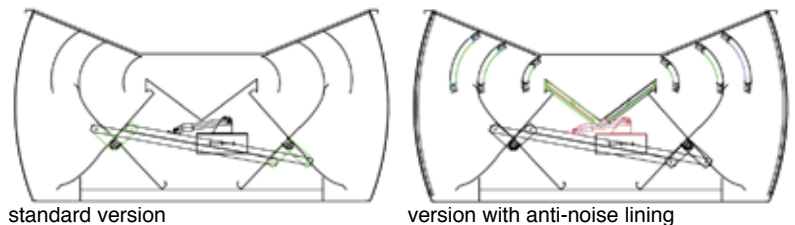
- Gravity roof ventilator with integrated rotary flaps of corrosion resistant aluminium of Al99.5 or AlMg3 alloy
- Minimum material thickness: 1.5 mm
- Bearing pins of aluminium
- Bearings: self-lubricating, high-temperature resistant plastic bearings (maintenance-free)
- Connecting parts: aluminium or stainless steel

Rain protection class

A1 according to DIN EN 13030, weather blades exposed to rain

Accessories (optional)

- Electric drive 230 V / 200 W / IP 54
- Electric drive 24 V / DC 19.2 W
- Pneumatic drive 8 bar
- Smoke and heat exhaust equipment (pneumatic, cylinder, TW, CO² cylinder)
- Manual drive with locking device
- Fixed version
- Anti-noise lining (R_w = 13 dB)
Double-shell blades (20 mm insulation)
- Powder coating 80 µm in RAL finish
- Anodized
- Bird screen: aluminium / stainless steel / galvanized steel
- Insect screen: stainless steel / plastic

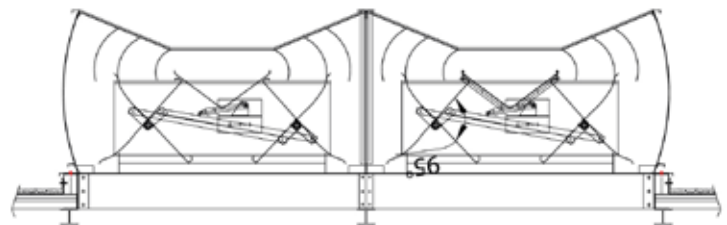


standard version

version with anti-noise lining

Attenuation (anti-noise version)									
f (Hz)	63	125	250	500	1k	2k	4k	8k	R _w
dB	1	2	6	10	14	16	17	15	13

Cv values: 0.735 with control flaps fully open (rain-protected position)



possible configuration

(maximum width of the roof opening: 6000 mm, any length)

Installation Details

Different frames

