



Technical data	
Pressure force	see table of items
Tractive force	max. 1000N (programmable 300-1000N)
Locking force	5000N
Chain stroke	300, 500, 600 and 750mm
Opening speed	depending on variant – see table of items for data ("opening time")
Window types	top hung, bottom hung, turning, pivot, roof window and light dome
Nominal voltage	24 VDC (max. 10% ripple)
Voltage	19-32 VDC
Open-circuit voltage	max. 32 VDC
Current consumption	see table of items
Operating conditions	-5°C - +74 °C max. 90% relative humidity (not condensing)
Switch-on-duration	ED 20% (max. 2min. per 10min.)
Material	anodised aluminium housing with zinc cromate passivated steel chain Europe:actuator with 5m grey silicone cable 3-core 0.75mm <sup>2</sup> USA/Canada: actuator without cable
Colour	anodised aluminium, other RAL colours at an additional price
Size	80mm x 54mm (W x H), see table of items for length
Weight	300mm - 5.2kg, 500mm - 5.9kg, 600mm - 6.3kg, 750mm - 6.8kg
IP rating	IP54
Life span	The life span of the actuator depends on the load and chain stroke Recomended test case for EN approval: 10.000 ventilation openings 500mm 500N 1.000 smoke openings full stroke 500N 5 smoke openings with snow load 600N/1000N full stroke
Certification	ETL (actuators for USA and Canada, the item number contains "UL")
Delivery includes	Europe: actuator with 5m connection cable USA/Canada: actuator without cable
Note	we reserve the right to make technical changes

Product code composition						
WMU 8	x	x	-n	x	x	0104
						Product version
						Chain opening [mm]
						<b>Certification</b> EN: For actuator approved according to EN 12101-2 the item number must contain EN UL: For ETL certified actuator the item number must contain UL
						Actuator variant: 1=single, 2=double, 3=triple, 4=quad
						Power consumption [A]
						Pressure force: 6=600N, 8=1000N
<b>Explanation of product code structure</b> WMU 883-2 UL 0300 0104 WMU 883 actuator, pressure force 1000N, power consumption 3A, double synchronisation, ETL certified, chain opening 300mm, product version 0104.						

Items					
Pressure force [N]	Current consumption [A]	Chain stroke [mm]	Opening time [s]	Length [mm]	Item no.
600	1	300	65	545	WMU 861-n* 0300
		500	107	645	WMU 861-n* 0500
	2	300	35	545	WMU 862-n* ** 0300
		500	54	645	WMU 862-n* ** 0500
		600	64	685	WMU 862-n* 0600
		750	80	765	WMU 862-n* 0750
	3	600	54	685	WMU 863-n* ** 0600
	4	750	58	765	WMU 864-n* ** 0750
1000	2	300	75	545	WMU 882-n* 0300
		500	130	645	WMU 882-n* 0500
		600	155	685	WMU 882-n* 0600
		750	195	765	WMU 882-n* 0750
	3	300	42	545	WMU 883-n* ** 0300
	4	500	55	645	WMU 884-n* ** 0500
		600	59	685	WMU 884-n* ** 0600
	5	750	59	765	WMU 885-n* ** 0750

n\* = the actuator variant n is to be determined when ordering (1=single, 2=double, 3=triple, 4=quad)

\*\* = Certification: EN 12101-2 or ETL - see the table 'Product code composition' for further details.  
Note: EN 12101-2 approved actuator variants are only available as 'Single' and 'Double'.

Accessories	Item no.
Electronically shortening of chain	WKK – WMU actuator
Actuator bracket for WMU 8xx, heavy bracket (EN approved)	WAB 836H
Chain bracket for WMU 8xx	WAB 836E

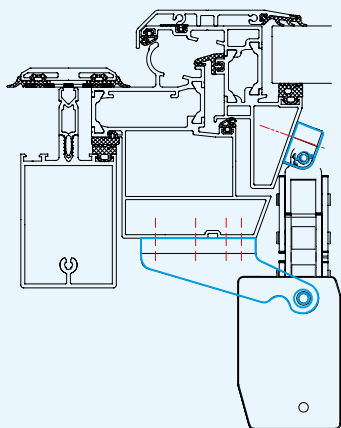
**See separate product sheets for further information.**

WMU 861 / 862 / 863 / 864

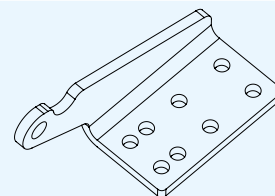
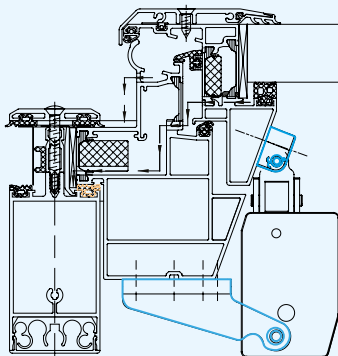
WMU 882 / 883 / 884 / 885

# CHAIN ACTUATOR UP TO 1000N

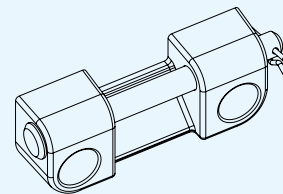
Installation suggestion 1



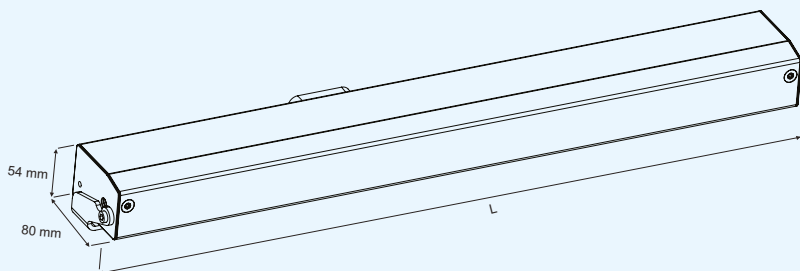
Installation suggestion 2



WAB 836H



WAB 836E



L = Length, see table of items for data