

Whitecroft  
lighting

# AVENUE MICRO



**LED RECESSED**

## Installation Instructions

August 2017 - 990.0281.01 Rev D



### Whitecroft Lighting Limited

Burlington Street, Ashton-under-Lyne, Lancashire OL7 0AX  
Telephone: +44(0) 870 5 087 087 Facsimile: +44 (0)870 5 084 210

Registered No. 3848973 England

Registered Office: As above

# INSTALLATION GUIDE:



## AVENUE MICRO - RECESSED

### IMPORTANT:

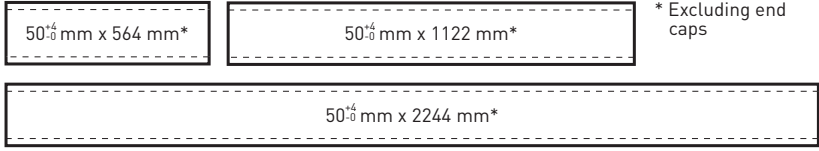
The luminaire must not be covered by any debris or insulating material. Ensure there is a minimum of 50 mm airspace around the luminaire. Electrical termination must be carried out by a qualified electrician in accordance with the latest edition of IEE wiring regulations BS7671.

PLEASE RETAIN THIS GUIDE FOR FUTURE REFERENCE AND RECYCLE PACKAGING.

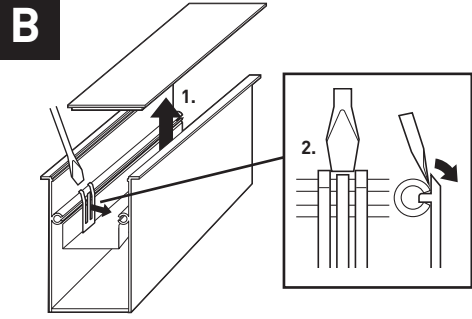


### A ISOLATE MAINS SUPPLY BEFORE COMMENCING INSTALLATION

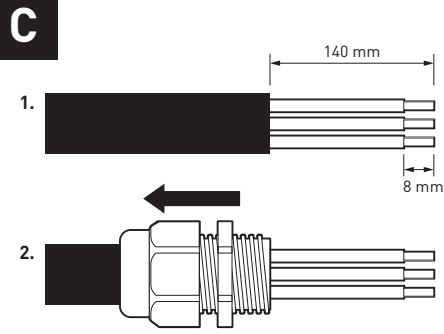
**IMPORTANT: DO NOT USE POWER TOOLS TO TIGHTEN FIXINGS ON THIS PRODUCT. NOT SUITABLE FOR WALL MOUNTING.**



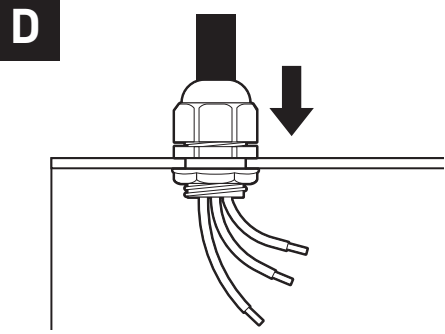
- Minimum void depth 90 mm (110 mm at cable entries).
- Cut a rectangular hole in the ceiling based on length of fitting.
- To calculate cut-out for each length, add 3.6<sup>+5</sup> mm to the total length of the individual components to allow for the end caps.



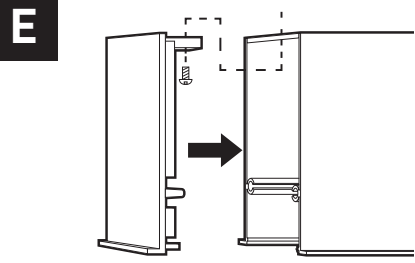
- Remove diffuser (1).
- Remove LED tray as shown (2).
- Unclip module plugs / earthing spade.



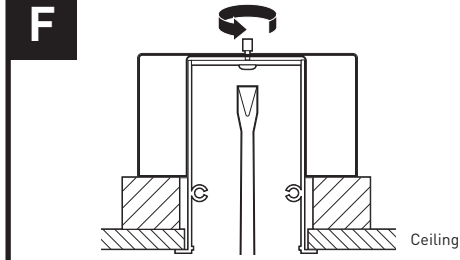
- Prepare cable as shown (1).
- Fit gland to cable (2).



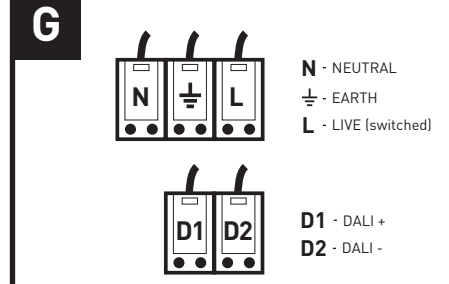
- Secure gland to body.



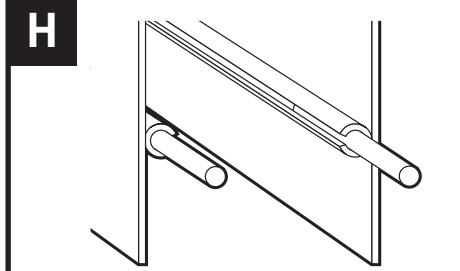
- Attach end caps at both ends of the fitting using M4 screws supplied (do not overtighten).
- IMPORTANT: For joining multiple fittings leave one or both end caps off.**



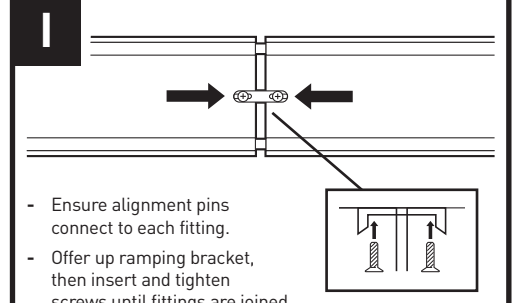
- Undo twist bracket to ceiling thickness +5 mm.
- Offer product up into ceiling cut-out.
- Tighten ceiling retainer screws until product is held securely.



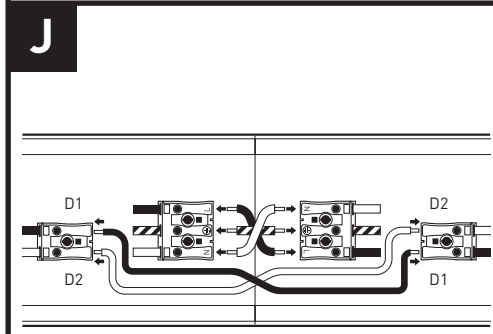
- Connect mains supply to terminal block.
- For switch dim link D2 to N, connect D1 to mains supply via a push to make retractive switch.



- For joining multiple fittings tap in two alignment pins into one end of each product with hammer.



- Ensure alignment pins connect to each fitting.
- Offer up ramping bracket, then insert and tighten screws until fittings are joined securely (do not overtighten).



- Link terminal blocks at each end using cables supplied.



- Offer up LED tray(s) and re-connect plugs and earthing spade, then push LED tray(s) into fitting ensuring clips are correctly located and secure.
- Push diffuser back into fitting until secure.
- To prevent light spill gaps on longer runs, an additional section of diffuser is supplied with the end cap kit.
- If required, it should be fitted before the final diffuser, which should be trimmed using appropriate cutting equipment before fitting.

### REINSTATE MAINS SUPPLY

## SPECIFICATION

Lamp Type:	LED
Colour:	840
Finish:	White texture / Silver texture
Materials:	
Body:	Aluminium
Geartray:	Steel
Diffusers:	Polycarbonate
Control gear:	Fixed output / Dali
Supply:	240 V 50 Hz AC
Operating Temperature:	0 - 25°C
Internal Wiring:	1.5 mm <sup>2</sup>
Cable Entry:	From above
Terminal Block:	Piano key
Ingress Protection:	IP20
Ceiling Compatibility:	Plasterboard aperture lined with battens (min 35 mm max 45 mm thickness) T15/T25 Suspended Ceiling (special layout required to suit run design)



## GENERAL INFORMATION

1. A qualified electrician, in accordance with IEE wiring regulations should carry out connection to mains wiring.
2. Observe ESD precautions during installation.
3. This unit must be EARTHED.
4. Ensure that the rated voltage and frequency requirements are compatible with the available mains supply.
5. Cleaning of reflectors and lenses should be carried out using clean, soft and lint free cloths and anti-static cleaning fluid.
6. Do not carry out high voltage insulation test, i.e. 500 / 1000 V this may damage internal components.

TECHNICAL SUPPORT  
Telephone: 0161 331 5700  
E-mail: [technical@whitecroftlight.com](mailto:technical@whitecroftlight.com)  
<http://www.whitecroftlighting.com/>