

lepsicoat

Mineral Render PLUS



Rendering in Adverse Weather Conditions



THE UK CLIMATE IS CHANGING!



Our winters are longer and our summers are wetter and more humid.

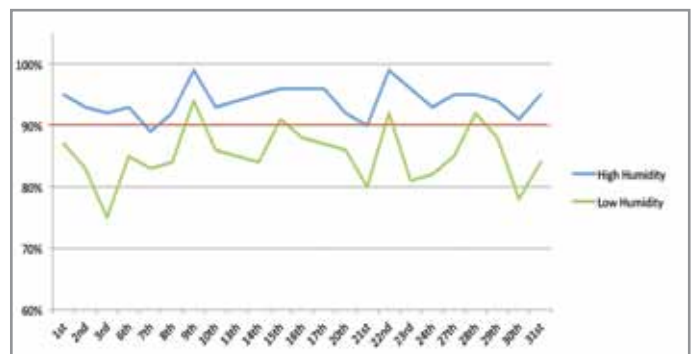
2012 was the second wettest year in England & Wales since records began and March 2013 saw the coldest month since 1962, with an average temperature of -0.7°C (that's 3.3°C below the 1981-2010 UK average).

This puts added pressure on the EWI industry as the successful application of external render is entirely dependent on favourable weather conditions (since drying times take into account a whole host of factors including ambient air temperature, rainfall, humidity and air movement).

As a rule, renders should never be applied when the air temperature drops lower than 5°C and falling and more importantly when air humidity is expected to remain above 90%. Work can commence again when the air temperature reaches 3°C and rising and where temperatures remain above 5°C for a reasonable amount of time to allow drying.

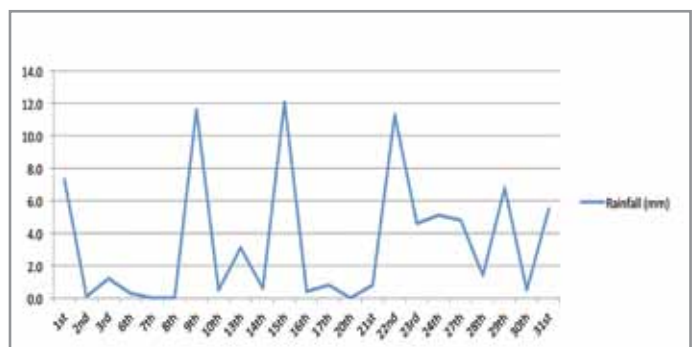
In addition, render should never be applied when a frost is due (below 0°C) within 24 hours of application.

Unfortunately, it's not only the winter months that are affected by the cold, rain and increased levels of humidity - **the UK suffers inclement weather the whole year round!**



AIR HUMIDITY ANALYSIS - JANUARY 2014
NEWCASTLE-UPON-TYNE

SOURCE: <http://www.worldweatheronline.com>



RAINFALL ANALYSIS - JANUARY 2014
NEWCASTLE-UPON-TYNE

SOURCE: <http://www.worldweatheronline.com>

On-site Issues

Although silicone renders offer a supreme quality, weatherproof finish, as with any sort of external coating they need to be applied in the right atmospheric conditions to ensure optimum performance.

During the curing process the face of a silicone render forms a film and dries slowly, yet the water content still has to be allowed to evaporate so that the polymer/silicone film can harden and set. In adverse weather conditions, when the drying process is slowed down, silicone render can become vulnerable to trapped moisture, bubbling, partial delamination and complete wash offs, even days after application if strict application guidelines are not adhered to and the area is not adequately protected.

We have the solution!

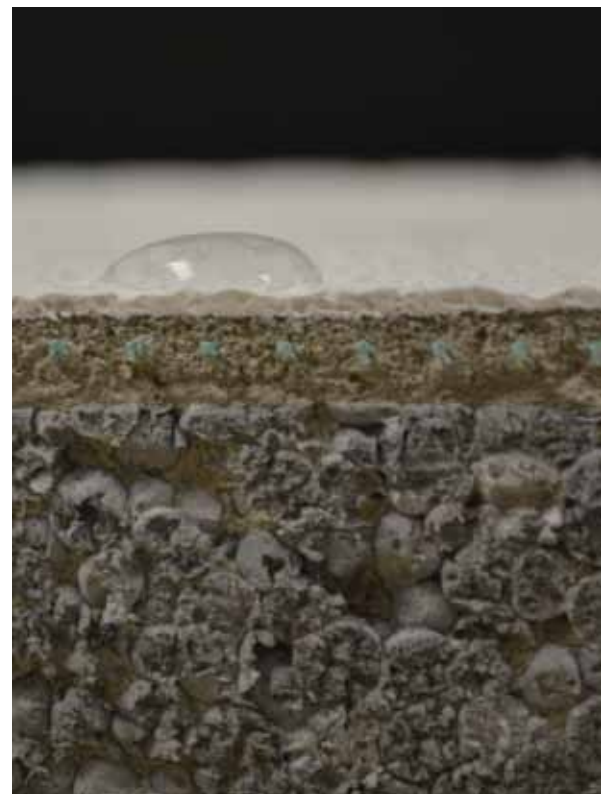
epsicoat Mineral Render PLUS

Wetherby's **EpsiCoat Mineral Render PLUS** is a uniquely exclusive formulation, currently not available anywhere else in the UK! It offers the same versatility as silicone render, yet unlike silicone renders which set by air drying, **EpsiCoat Mineral Render PLUS** relies on a chemical reaction during the curing process, enabling them to dry much quicker and become less susceptible to delamination and wash-offs in cold and wet conditions.

EpsiCoat Mineral Render PLUS has an almost identical granular appearance as silicone render and the application method is exactly the same, meaning additional training is not required.



BBA Approved onto: Standard White EPS & EpsiTherm Graphite Enhanced Insulation



How does it cure so quickly?

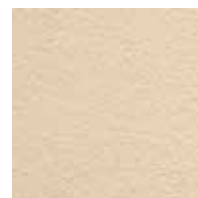
EpsiCoat Mineral Render PLUS 'vs' Standard Thin Coat Silicone Render



20 kg of powder



4ltrs of water



9.5-10.0m²
of finish



2ltrs of water to
evaporate from surface



25 kg of paste which includes 5ltrs of water



9.5-10.0m²
of finish



5ltrs of water to
evaporate from surface

epsicoat

Mineral Render PLUS

Epsicoat Mineral Render PLUS is a through colour formulation, meaning that over-staining is not required. Application is quick, easy and the product is rainproof within 2 hours - a perfect solution in the UK's unreliable weather conditions.

Epsicoat Mineral Render PLUS is available in a range of 8 standard colours, however depending on quantities of material required, additional colours may be available on request.

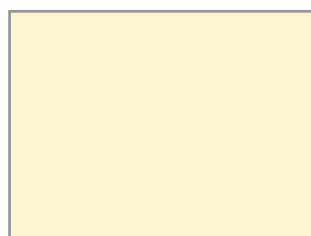
Although a polymer modified, dry powder product, **EpsiCoat Mineral Render PLUS** contains no source of lime hence will not suffer from discolouration/efflorescence. However, it does contain the latest in encapsulated biocides and is one of the only mineral renders on the market to be truly fungal / algal resistant.

- **Rainproof within 2 hours**
- **Touch dry within 3 hours**
- **Dries independently of humidity**
- Available in 8 standard colours
- Can be applied in cold / damp conditions
- Offers a faster drying time than silicone texture
- Requires a primer to ensure colour stability
- Comes with full BBA technical approval (13/5062)

Supplied in 20kg plastic tubs



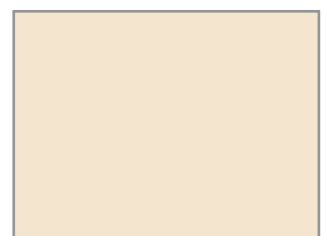
ARCTIC



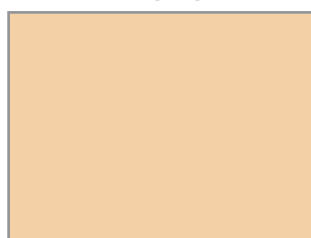
PEARL



PRIMROSE



APRICOT



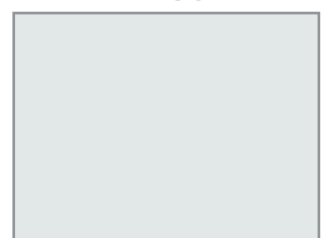
SAHARA



CARNATION



MINT

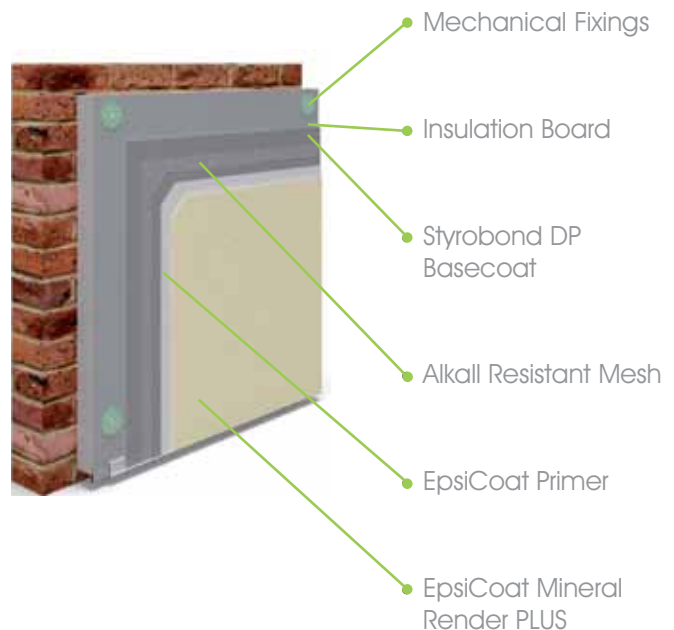


STORM



epsicoat

Mineral Render PLUS



PLEASE NOTE: All colours contained within this brochure are displayed as accurately as the printing process will allow and slight variations in colour will almost certainly occur. We strongly recommend that physical samples are obtained prior to ordering.

Styrofix Board Adhesive

Styrofix is a water resistant insulation board adhesive, used as part of a Wetherby EpsiCoat Mineral Render System. Offers excellent adhesion between the substrate and insulation boards either to level out uneven surfaces, or when fully bedding on high rise applications. Easy to use, just add water and mix to a pliable consistency.

Supplied in 25kg paper sacks



Styrobond DP Basecoat

Styrobond DP is a pre blended basecoat, used as part of a Wetherby EpsiCoat Mineral Render System. Provides an excellent basecoat layer for embedding alkali reinforcing mesh to offer superior flexural strength and impact resistance to all elevations. Offers excellent adhesion and is easy to use, just add water.

Supplied in 25kg paper sacks



EpsiCoat Primer

EpsiCoat Primer is a highly developed product in liquid form, which absorbs deeply into a cementitious basecoat substrate. Absorbs deep into a cementitious basecoat, sealing the substrate and preventing the seeping of efflorescence to the surface. Provides a solid key for the application of finishing coats such as **EpsiCoat Mineral Render Plus**.

Supplied in 15 litre reusable plastic tubs in three colours:

PRIMER REF TO BE USED WITH EPSICOAT MINERAL RENDER PLUS COLOUR

EpsiCoat Primer 1 = Arctic / Carnation

EpsiCoat Primer 2 = Mint / Pearl / Storm

EpsiCoat Primer 3 = Sahara / Primrose / Apricot



Scan here for
coverage rates



Scan here to
order samples

Application Guide

1



Brush down the substrate to remove any friable material, algae or lichen and apply fungicidal wash where necessary.

Mix the Styrobond DP Scrim Adhesive to a pliable consistency and trowel apply initial coat at a thickness of 4-6mm.

2



5



4



Affix 37400 clip on mesh bead to base rail.



Install all base rails, beads and trims using approved Wetherby fixings at a maximum of 300mm centres and 50mm from each end. Insulation boards will require bedding to the substrate using Styrofix Bedding Adhesive on high rise applications or to level the boards on an uneven substrate.


3




Place first insulation board onto base rail and secure with approved Wetherby mechanical fixings at a rate of 8 – 9 fixings per m² in accordance with Wetherby fixing pattern.

Should be no joints in boards in line with corners of windows or door openings.





Continue with additional boards ensuring that a staggered laying pattern is adhered to. All boards must be interleaved at external corners.

Bed in alkali resistant reinforcing mesh into top third of scrim adhesive, ensuring a minimum overlap of 75mm is achieved. Ensure all PVC wings of beading are overlapped with scrim cloth.

6



Mesh should be kept taught and fixed from the top down. There should be no overlaps within 150mm of any reveal or corner.



7



Apply additional stress patches using 200mm x 200mm off-cuts of mesh positioned at 45° to window and door openings.

Thoroughly mix the **EpsiCoat Mineral Render PLUS** texture to a uniform consistency, using a clean, rust-free low speed mixer. When mixing, powder should always be added to water to ensure a homogenous mix. Water consumption rates must be closely adhered to in order to ensure colour consistency and estimated setting times.



Using a roller, apply a generous coat of EpsiCoat Primer ensuring a full coverage and allow to dry.

9



8



When scrim adhesive is dry, apply a secondary tight levelling coat at 2-4mm to the entire wall surface to ensure that the mesh is fully covered. Smooth to a flat surface using a damp dry lining sponge.



Do not re-temper. Apply in a continuous motion always working towards a wet edge. Rub over texture with a plastic trowel in a circular motion to seal the texture and provide the desired consistent finish.



11



When all guidelines are adhered to, the render should be touch dry within 1 hour and showerproof within 2 hours.



wetherby

creating a greener future

head office

1 kid glove road
golborne enterprise park
golborne
greater manchester
wa3 3gs

tel: 01942 717100
fax: 01942 717101

scotland

62 hydepark street
glasgow
lanarkshire
g3 8bw

tel: 0141 221 8115
fax: 0141 847 0767

south wales

unit 6
heol ty gwyn industrial estate
maesteg
mid glamorgan
cf34 0bq

tel: 08450 946397
fax: 08450 946398

wakefield

unit 6
tuscan court
express way
wakefield euport
normanton
wf6 2ae

tel: 01924 897454
fax: 01924 895013

west thurrock

unit 10
thurrock trade park
oliver road
west thurrock
essex
rm20 3ed

tel: 01708 868748
fax: 01708 867254

haydock

unit 4 withins road
haydock industrial estate
haydock
merseyside
wa11 9ud

tel: 01942 729527
fax: 01942 721358

For further details, please contact
WBS TECHNICAL SUPPORT on **08458 382380**



www.wbs-ltd.co.uk
info@wbs-ltd.co.uk