

Operating and Maintenance

EBD Eyeball Diffusers



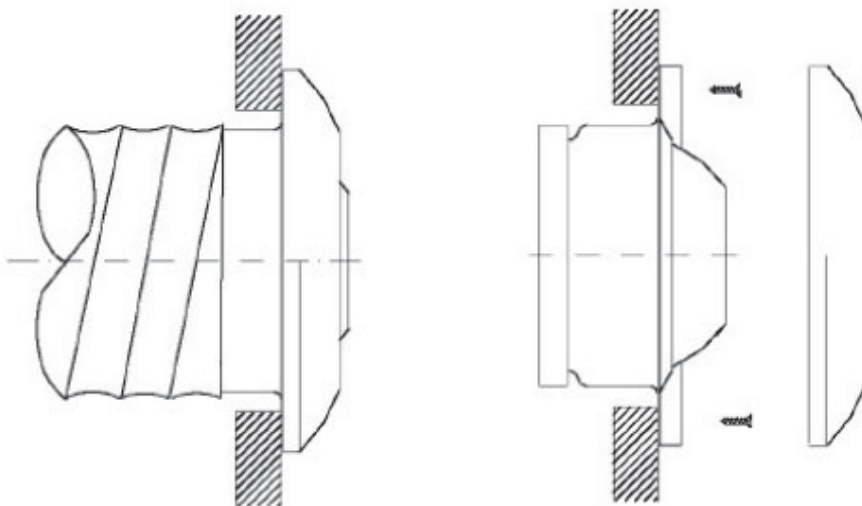
EBD Eyeball Diffusers

Operation and Maintenance Instructions

EBD

Installation and operation

1. Connect into duct work.
2. For wall or ceiling mounting, remove front cover by twisting aluminium face plate anti-clockwise, to allow access to screw holes (where applicable), fix using suitable fixings to wall or ceiling, replace face plate ring by aligning bayonet cut outs then twisting clockwise until it stops turning.
3. Flipping the eyeball through 180° will give either a jet throw if the smaller aperture is on the distribution face or a wide angle throw if the larger aperture is on the distribution face.
4. The eyeball diffuser can be swivelled to the desired position to allow for the air flow to be directed where required up to 30° from the major axis.



Cleaning & Maintenance

EBD diffusers require no maintenance. EBD Diffusers are generally not mounted in exposed. If cleaning is desired we would recommend that all accessible faces are cleaned with warm soapy water do not use any abrasive products. For regular cleaning a simple wipe down should suffice. If motors are fitted do not clean these parts using water, or damp clothes etc.

Waterloo Product Range

Waterloo Product Range

GRILLES

A complete range of products suitable for all wall, ceiling and floor applications. Most grilles are made from aluminium and have a range of fixed or moveable blades designed to give performance whilst remaining aesthetically pleasing to the eye. Grilles are made to customer specified sizes and colours (PPM/G); standard colour PPM9010 (20% Gloss White). The range is complemented by the Aircell range of polymer Grilles.



DIFFUSERS

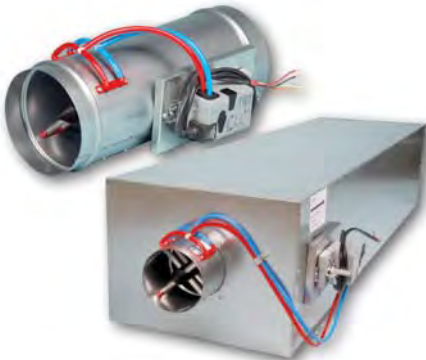
Designed to be installed in various ceiling systems, we have a complete range to suit both performance and aesthetic requirements. Most diffusers are made from aluminium and can be ordered with or without plenum boxes for easy duct work. Diffusers can be ordered in customer specified colours (PPM/G); standard colour is PPM 9010 (20% Gloss White). This range is complemented by the Aircell range of polymer Diffusers.



ACTIVE AND PASSIVE CHILLED BEAMS

The finest quality range of high output active beams, used for ventilated heating and cooling applications. These units have 4 pipe coils to allow heating and cooling circuits to run simultaneously, giving constant and responsive control. The design allows a large optimum capacity and also allows the customer to specify the nozzle type and pitch for individual circumstances.

Active beams are made from steel to a large range of customer specified sizes and as such are suitable for various different ceiling systems. Standard finish is PPM 9010, however other (PPM/G) colours are available on request.



AIR VOLUME CONTROL DAMPERS

Pressure independent Variable Air Volume and Constant Air Volume dampers made from zintec plate. Most volume dampers are regulated with an electronic motor and sensors and are calibrated to customer specifications before delivery.

The Constant Air Volume damper requires no power source as it is controlled via a mechanical device and calibrated before delivery. All volume dampers can be ordered with a single or double (insulation) skin.



EXTERNAL LOUVRES

A quality range of products for external wall applications. Made from aluminium, with birdscreen or insect screen options. All louvres are made to customer specified sizes and (PPM/G) colours; standard colour is PPM 9006.



DISPLACEMENT

A full range of recessed, semi-recessed, floor, wall and corner units providing high ventilation efficiency and excellent comfort. The very low pressure involved also offer quiet installations. Displacement units are available as wall or floor mounted, or indeed integrated within the architectural design.



Waterloo Air Products Ltd

Head Office:

Mills Road, Aylesford,
Maidstone, Kent ME20 7NB
Tel: +44 (0)1622 711 500
Fax: +44 (0)1622 710 648
email: sales@waterloo.co.uk
internet: www.waterloo.co.uk

Northern Office:

Hyde Park House, Cartwright Street,
Newton, Hyde SK14 4EH
Tel: +44 (0)161 367 1264
Fax: +44 (0)161 367 1262
email: sales@waterloo.co.uk
internet: www.waterloo.co.uk



FM 27823



EMS 590755

All products conform to the Terms and Conditions of Waterloo Air Products Ltd a copy of which are available upon request. Due to our continuous research and development programme, Waterloo Air Products Ltd reserve the right to alter products and prices without prior notification.

Copyright Waterloo Air Products Ltd 2019

Waterloo declare that, at the time of print, all products are in accordance with relevant directives, as identified by HEVAC and other European Organisations and will display the CE Marking where required.