



TIMBER LIGHTWEIGHT TEXTURE PANEL SYSTEM

Achieve a natural, characterful timber effect rapidly



CREATE THE MOOD

GREAT CREATIVE SCOPE AND VISUAL IMPACT

Enhanced **atmosphere** leads to **increased footfall, longer dwell time and higher revenue**. Visual impact is essential when enhancing the atmosphere, so selecting the right wall finish can make the vital difference to achieving your **return on investment**. That is where we can help.

All our **Timber** panels recreate the superb characteristic textures and features of the original walls, and contain in excess of **50% natural pigments, oxides and minerals**. With 11 designs and colour options in the range, it gives you great choice for transforming your space.





FEATURE WALLS

Durable panel system - ideal for feature walls and large projects.



VAULTED CEILINGS

Lightweight panels that work well on ceilings, including curved designs like this vaulted ceiling.



STUNNING CURVES

Great creative scope and visual impact - cover curves with ease.



CRISP CORNERS

Corners and reveals are formed simply during installation for seamless finishes.



QUICK INSTALLATION

Quick coverage with minimal, concealed joints for fast install.



LIGHTWEIGHT PANELS

No need for structural support, saving time and cost.



SUPERB NATURAL FEATURES

Produced from original walls to capture exact features of wood.



SPECIAL EFFECTS

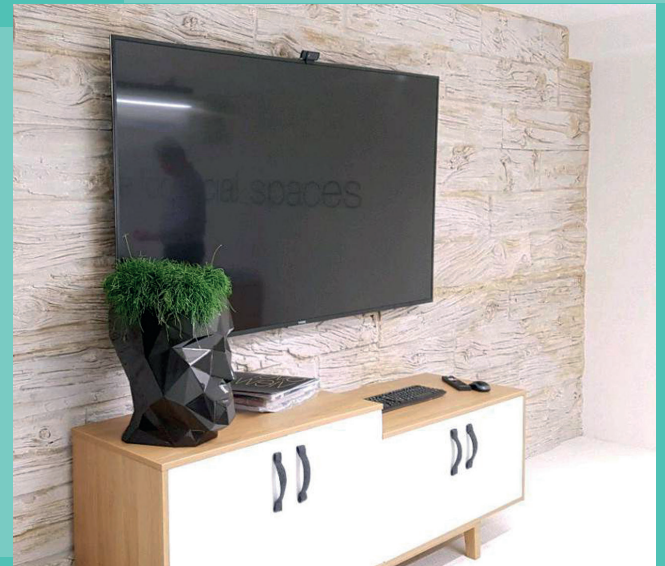
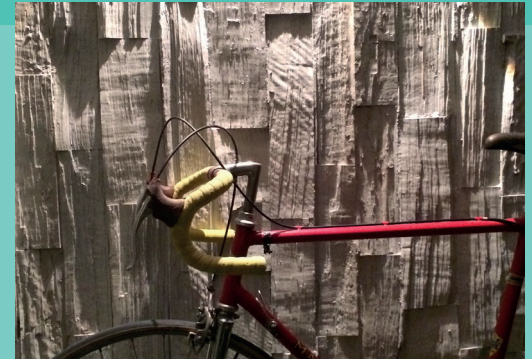
Panels accommodate additional logos, lighting or signage to great effect.

INTRODUCING TIMBER

Our unique Timber panel system is extremely adaptable. The large-format panels enable quick coverage of a large area, which can significantly reduce time on site.

- > Large panel format enables rapid installation - to almost any wall type
- > Produced from original walls to capture every feature perfectly
- > Lightweight at only 8kg/m² - adds minimal load on structure
- > Durable and robust, yet flexible
- > No wet trades or on site wood cutting, reduces noise and mess
- > Minimal maintenance

OVER 50% NATURAL
PIGMENTS, OXIDES
& MINERALS FOR
PERFECT TEXTURE





APPROXIMATELY 8KG/
M² - LIGHTER AND MUCH
EASIER TO HANDLE THAN
SOLID TIMBER



BENEFITS OF THE TIMBER PANEL SYSTEM

CONSISTENT FINISH

ENABLES BRAND CONSISTENCY ACROSS MULTIPLE LOCATIONS

Do you wish it was easier to achieve a consistent finish across multiple locations to maintain a strong **brand standard**?

We have worked with many top brands and are experienced in delivering fast-paced, large scale roll-outs across the UK and overseas.

By using our **Timber** panels it ensures that every project is finished quickly with the same great look and feel, giving continuity to your roll-out programme.

MINIMAL JOINTING

LARGE PANEL SIZE FOR MINIMAL, CONCEALED JOINTS

The ease and speed of installation of Vtec **Timber** panels will contribute to your project's success.

Large panel size (approx 4.2m²) means quick wall coverage, achieved with minimal jointing. Save time versus traditional methods and ensure the best quality finish.

To install our **Timber** panels, simply lift up, screw back and joint. Cover extensive areas, awkward spaces or multiple storeys with ease, saving time and money.

QUICK TO INSTALL

REDUCED SITE DOWNTIME AND COST

Minimise disruption and reduce install cost with our **Timber** panel system.

Perfect for projects with tight timescales, our panels reduce install time drastically. They are often fitted overnight or over a weekend, enabling amazing transformations at speed.

LIGHTWEIGHT AND ADAPTABLE

NO NEED FOR STRUCTURAL SUPPORT

Our **Timber** panels are easily fixed to most common substrates without needing to strengthen them.

Avoid any structural support work that's needed to cope with a traditional timber wall, saving you time and keeping costs down.

EASILY CURVED

Create impact on curved walls with ease!

Timber panels can be quickly installed on convex and concave curved surfaces, unlike solid timber.

ROBUST AND DURABLE

MINIMISE RE-DECORATION WORRIES

Our highly durable panels are ideal for use in busy areas with high footfall such as bars, cafés, stairways and airports.

Panels are strong and able to support additional decoration or features.

Choose long-lasting panels and eliminate the need for expensive replacements, repair and redecoration a few months down the line.







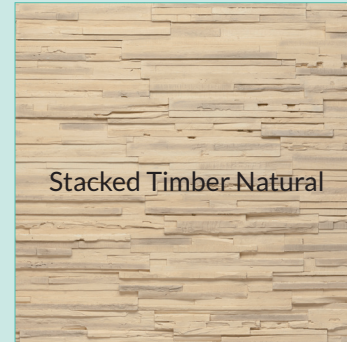
SPECIFYING TIMBER PANELS

- 1 SELECT STYLE
- 2 SELECT FR CLASS
- 3 SPECIFICATION WORDING

1 SELECT STYLE



Choose from 11 standard **Timber** designs



- > Nominal panel dimensions:
RUSTIC TIMBER: 3.28m (w) x 1.29m (h)
STACKED TIMBER: 2.32m (w) x 1.35m (h)
WEATHERED SLEEPER: 3.27m (w) x 1.33m (h)
- > Material thickness is approximately 5mm max. which follows the contours of the bricks and mortar joints.
- > Overall panel depth: Approximately 20mm

Due to the natural elements and processes used in creating Texture Panels, colours and dimensions may vary between panels and batches. Images are indicative only of the finished products. We reserve the right to alter specifications and details without notice.

2 SELECT FR CLASS

Timber panels can be produce in a Fire Retardant Grade for use in sensitive locations.

You can find our panels in many high profile areas such as Victoria Station, Canary Wharf, Harrods, Selfridges, Gatwick, Luton and Stansted Airports.

STANDARD GRADE

No specific FR requirement

FR CLASS REQUIRED

Euroclass B-S3,d0

3 SPECIFICATION WORDING

Specifying the Timber panel system to ensure you get your desired finish on the wall is simple. Please copy the specification wording below:

Standard Grade Panels

Timber [insert your preferred Style here, eg. **Weathered Sleeper Oak**] **Panel System** for internal use. Panels to be manufactured in standard grade Class D3 to BS 476 : Part 7, from **Vtec Group Ltd**, Unit 3, Cooksland Industrial Estate, Bodmin, Cornwall PL31 2QB. T: 03307 00 00 30 www.vtecgroupp.co.uk.

FR Grade Panels

Timber [insert your preferred Style here, eg. **Weathered Sleeper Oak**] **Panel System** for internal use. Panels to be manufactured in FR Grade B-S3,d0, from **Vtec Group Ltd**, Unit 3, Cooksland Industrial Estate, Bodmin, Cornwall PL31 2QB. T: 03307 00 00 30 www.vtecgroupp.co.uk.



OTHER CONSIDERATIONS WHEN USING THE TIMBER PANEL SYSTEM

CONSIDER THE APPLICATION

Whether you need a feature wall, a large scale ceiling or a decorative surface suitable for curves, **Timber** panels can be easily adapted to suit your design.

WALL

CURVED WALL

VAULTED CEILING

CONSIDER THE SUBSTRATE

Our panel system can be used almost on any type of common substrate, as shown below. For advice on fixing **Timber panel system** to any other substrate, please speak to our Technical Team.

**BRICK, BLOCK,
STONEWORK AND
CONCRETE**



TIMBER STUDWORK



**LIGHTWEIGHT METAL
PARTITIONING**



**LIGHTWEIGHT SHEET
STEEL LININGS**



REQUIREMENTS

- Fix timber rails to walls at suitable positions, packed out and lined to create a flat plane. You can either fasten panels direct to the rails (provided support is in the right place, otherwise fit noggins where required e.g. to support panel edges), or
 - Alternatively, fasten strips of suitable sheet material as described above or clad the whole wall with it if preferred.
-
- You can either fasten direct to this (provided support is in the right place, otherwise fit noggins where required e.g. to support panel edges)
or
 - Alternatively fasten strips of suitable sheet material as described above or clad the whole wall with it if preferred.
-
- Fasten strips of suitable sheet material as described above or clad the whole wall with it if preferred.
-
- Fasten strips of suitable timber sheet material as described above or clad the whole wall with it if preferred.
 - NB: Pack or space this off the steel sheet so that when fastening through the panel the screw does not contact the steel sheet behind.

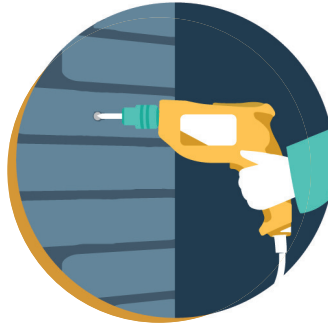
INSTALLATION OVERVIEW

Please refer to our installation guide for full details.

- 1 Measure, mark out and trim panels as required to align features



- 2 Raise or lower panels to align features, predrill and screw in place, packing out to suit



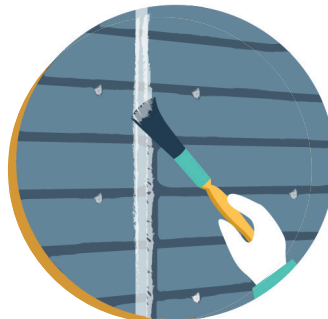
- 3 Roughly apply jointing compound (supplied) to cover joints and fixing positions



- 4 Shape the jointing compound to suit as it begins to harden



- 5 Introduce final texture to jointing compound with brush dipped in cleaner



- 6 Leave for 24 hours. Apply colour solutions sparingly (avoiding bold strokes) to blend in with surrounding tones, and rag off before it dries



FIXING TO SUBSTRATE

Our panel system can be used almost on any type of common substrate.

Nearly all panels are designed so the features meet with those of adjacent sheets. However, care should be taken to line up features (not necessarily panels) for best results.

Fastener location and joints are easily disguised using the accessory items provided, for a seamless wall effect.

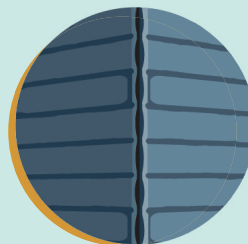
EASE OF INSTALL

Vtec Timber panels have been successfully installed on a wide range of bespoke projects, one-off builds and brand roll-outs.

We provide detailed instructions. For complex projects, we can provide indicative panel layout drawings as part of our install pack to the installers.

In conjunction with comprehensive phone support as required, we ensure you have everything needed to fit the panels successfully.

FINISHING: BEST PRACTICE



Corners

Raise or lower panels to align features. Mark position of corner, cut to form mitre. Fix panels leaving approx. 5mm gap, carefully apply the jointing compound (supplied) and shape to suit.



Finishing exposed edges

Doorways and returns can easily be incorporated. If a panel end is exposed, simply use the jointing compound (supplied) to fill the panel edge and shape to create a brick end for best effect.

“INSTALLATION WAS
A DODDLE!”

STEVE - CONTRACTOR - HOTEL CHAIN

TRANSFORMING A RESIDENTIAL DEVELOPMENT

THE BRIEF

This lakeside development of apartments is a great example of successful application of materials that create a luxurious look with minimal effort.

The designers of this project used our **Stacked Timber Brown** panels in FR grade for the lobby, setting the tone as soon as you step in.





END RESULTS

Our **Timber** panels perfectly replicate the beauty of natural timber, adding a warm feel to the property.

Paired with integrated lighting - enhancing the details, they create an impressive focal point, drawing visitors in.



STACKED TIMBER IN FINANCIAL OFFICES

THE BRIEF

Behind an imposing building façade and a global reputation of a finance leader hides an office space that is amusing and playful.

This deviation from traditional corporate design provides huge sensory appeal. This project is a great example of a project where employee wellbeing and happiness is given as much consideration as the functionality of the space.

Timber combines with other elements of the Vtec Texture range - Quarry Stone Dark Grey in the lobby and London Brick Multi in the restaurant area.





END RESULTS

Throughout the four upper office floors, the design uses widely varied shapes, textures, lighting and colours.

Stacked Timber Dark Grey helps to brighten up the breakout area with seating away from the windows.

The panels help to create appeal, alongside trailing plants and neon lighting, infusing it with a sense of warmth and relaxation.



VTECGROUP.CO.UK

Contact our technical team to discuss your application, samples or other questions. We're here to help.

Head Office and Manufacturing Vtec Group Ltd, Unit 3
Cooksland Industrial Estate, Bodmin, Cornwall, PL31 2QB

Call 03307 00 00 30
Email sales@vtecgroupp.co.uk
Visit vtecgroupp.co.uk

