



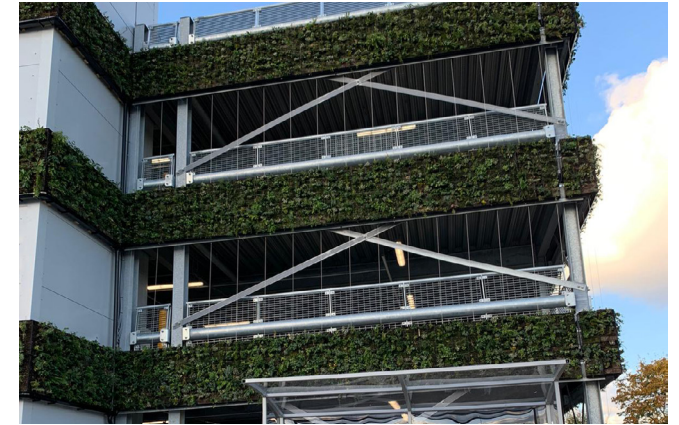
CASE STUDY

Bedfont Car Park

CASE STUDY

Bedfont Car Park

STAINES-UPON-THAMES, UNITED KINGDOM



Type
Outdoor

Duration
4 -8 weeks

When
2019

Size
510m²

Readie Construction are a leading specialist in several sectors including industrial, logistics and retail park sectors. They successfully deliver over 4 million square feet of space every year. They began looking into living walls and green infrastructure systems for this multi-storey car park project to aid planning.

ANS were thrilled to be given an opportunity to wrap yet another car park in living, breathing plants! Usually grey concrete blots on the landscape that bring polluting cars into one concentrated area, introducing particulate matter filtering plants is a natural, unique and visually stunning way to try and counteract these impacts on the planet and the people.

We grew the living wall modules from plugs for over 6 months at our nursery, so they were fully established when they reached site. We've also supplied our wire system over the car park too, using ivy plants for their ability to climb quickly and their absorbent properties.