



Accoya® Case Studies Revisited

Fife House

July 2006



the world's leading high technology wood

Project Detail

- Approximately 30m² Accoya[®] wood profiled facade cladding.
- Rough sawn dimensions 25x150 mm
- Factory coated with a translucent Sikken's Natural Balance coating system, backed by an industry-first 10 year guarantee for cladding with a contemporary smooth surface.

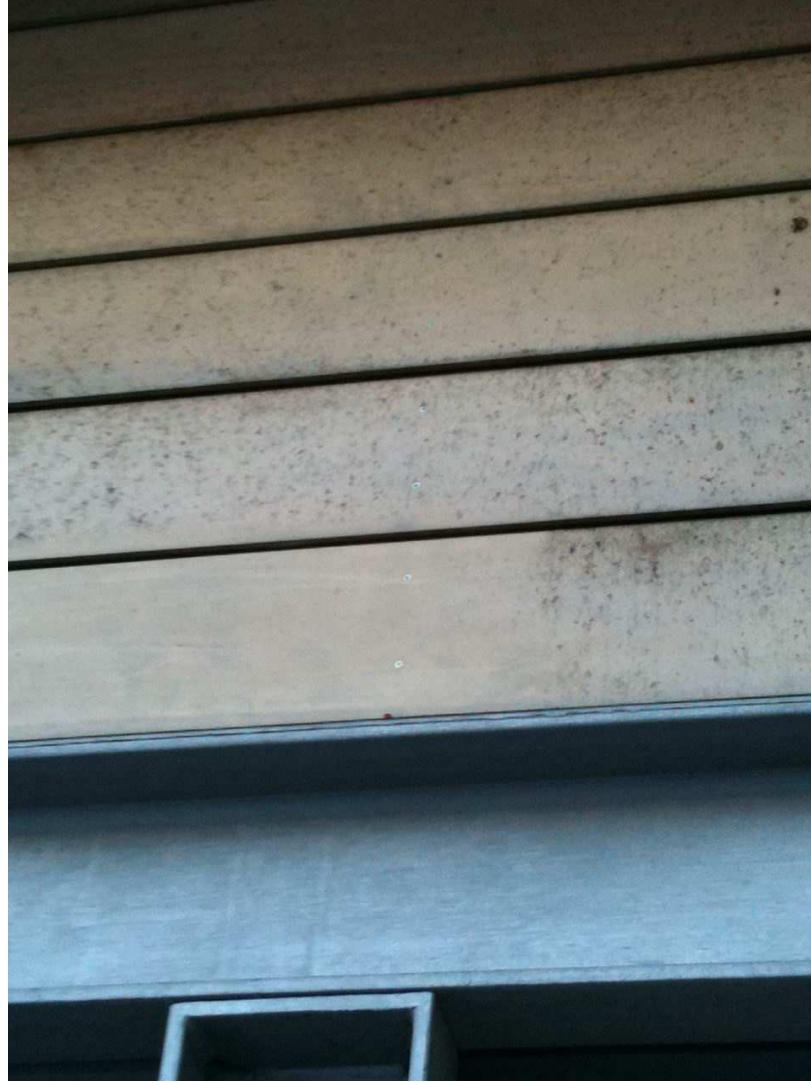
Photography July 2006



Photography 16th Dec 2010



Photography 3rd Feb 2011



Summary

- After 4 ½ years exterior use there's no sign of rot or decay
- Excellent coating performance
- No blisters or cracking
- Performs in extreme weather conditions
- Architect (client) is very happy with Accoya® product and coating
- Architect stated slight dirty look is tree sap from surrounding trees which easily washes off