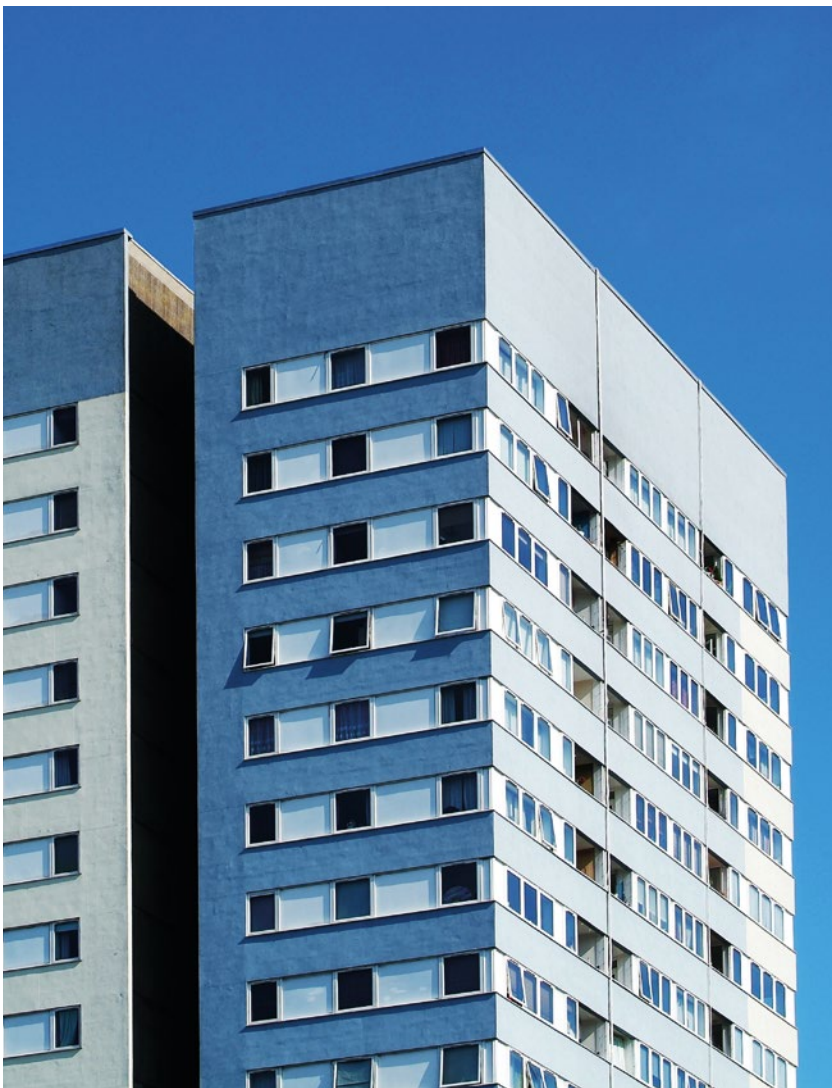


SOCIAL HOUSING

THE POWER TO SECURE



DOOR ENTRY
AND ACCESS
CONTROL
CATALOGUE



www.videxuk.com

INTRODUCTION

Access control is a critical aspect of social housing security where there's a constant flow of visitors who need access to different locations within the building on a 24/7 basis.

Security, as well as second-to-none accessibility and flexibility, are key priorities for door entry systems that are installed within social housing developments which are typically low-rise and high-rise accommodation.

ABOUT VIDEX:

Videx has been supplying and manufacturing access control and door entry systems for over 30 years. Our teams of estimators, technical support and designers all aim to make your job easier.

Our systems provide the upmost security and safety as well as a design and look that is compatible with its surroundings. We have in-depth technical knowledge of door entry systems and provide lifelong product support for the systems we supply, wherever they're installed.

WHY VIDEX:

We know what we're doing, and we comply to long standing and recently established building regulations. For example, our systems fully comply with the ISO 9001:2015 Quality Management Standard, Secured by Design, the Police initiative for designing out crime, and the Equality Act 2010 guidelines. We ensure we meet all your access control needs including statutory and regulatory requirements.

BESPOKE OFFERING:

Many local authorities and housing associations choose Videx as their preferred supplier of access control and door entry systems utilising our unrivalled bespoke products. With in-house engraving, CAD technicians and a wealth of social housing knowledge, we can provide a solution that suits most clients. Whether the entry panel needs to be a specific style, shape or size we can manufacture it, engrave it and deliver it. Excellent lead times ensure you save time and cost but most importantly keep your tenants safe and secure.

LIFELONG SUPPORT:

With all our systems and supporting products, we offer 24 months warranty and provide spare or replacement parts for up to 15 years following installation. During the entire lifecycle of a system, Videx will also provide full technical support to all local authorities and housing associations at no extra cost. Prior to installation, we also offer product training sessions across our entire system range, so that installers understand the system they're fitting and are familiar with its set up, how it works and what to do if any problems or issues occur.

Secured by Design



Official Police Security Initiative

CONTENTS

Our aim is to place Videx at the forefront of our chosen markets and to achieve significant market share through innovation, quality, service, competitive pricing and exceptional customer service.

KEY:



ACCESS FOBS & CARDS



ETHERNET TCP-IP



HANDS-FREE



HARD OF HEARING



EQUALITY ACT 2010



EVENTS LOGGING



MIFARE ACCESS



VANDAL RESISTANT



IK09



WEB



WIDE ANGLE CAMERA



CLEAN ENERGY



ALARM INPUT

VX2200 AUDIO & VIDEO ENTRY

The **VX2200** is one of our flagship systems, with its reliability, durability and efficient, easy to use operation making it a popular choice for access control among UK local authorities.

LOCAL AUTHORITIES CHOOSE THE **VX2200** BECAUSE:

- It's one of the most flexible and versatile systems in the UK - you can modify the system overtime, as requirements change
- It's easy to install and easy to use
- It's a very resilient system, requiring only 2 wires for audio and 6 wires for video
- It can accommodate anything from a single button modular door panel, up to a multiple entry, multiple level 998 apartment colour video system
- It's vandal resistant, that is officially Secured by Design accredited. Secured by Design is the UK police initiative for designing out crime by physical security, that aims to reduce crime through effective environmental design
- It uses vandal resistant main entrances, modular functional or digital sub entrances and everything in between

KEY FEATURES THAT APPEAL TO LOCAL AUTHORITIES INCLUDE:

APARTMENT ISOLATION: In the event of a fault within an apartment, or the wiring to an apartment, the line isolation will ensure that only one apartment is affected so the rest of the apartments on the system can function as normal.

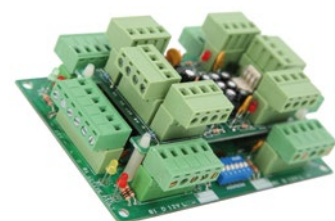
The **VX2200** uses optional 4 apartment audio isolation cards and for video systems, a piggy back board serves to protect the additional cables required for video, both saving space and simplifying connections.

Each card includes 10 LEDs to assist an engineer should a fault occur on the system. Channel in use, voltage fault and bus fault conditions are all signalled. To further assist the engineer, all connections are plug type to allow simple swap out while testing.

The cards are designed to be either distributed around the building or contained in a control cabinet in one or more locations.

EQUALITY ACT FEATURES:

- **LCD displays** - for residents with hearing issues. This can help guide them through the call and inform them when the door has been released
- **Voice annunciation** - a useful feature for visually impaired residents, as this verbally announces the message displayed on the LCD display
- **Induction coil** - available for the telephone handsets and the door panels. They are used by hearing aid wearers to inductively pick up the sounds and conversation from the system
- **Strobe lights** - used in apartments to visually signal that the intercom telephone is ringing
- **High contrast buttons** - provides a yellow bezel around the call button to give a contrast against the stainless-steel panel to aid the partially sighted



VR120 VANDAL RESISTANT ENTRY

The **VR120** IP55 rated **VR120** series of door entry panels are ideal for social housing access control applications. The range meets all Equality Act 2010 requirements, carries call progress LEDs for “SPEAK”, “OPEN” and “BUSY,” along with distinct audio reassurance tones to assist the visitor.

All face plates are deep engraved with 6mm in-filled black characters to identify each button. Optional colours for specific applications can also be specified along with custom logos.



FEATURES:

- IP55
- 12-gauge 316 stainless steel
- IP65 rated buttons with optional yellow bezel
- Call progress LEDs “SPEAK”, “OPEN” and “BUSY”
- Call progress reassurance tones
- Dry contact lock output
- Timed call, speech and lock release
- LCD display and voice annunciation call progress information (optional)

KEY:



VANDAL RESISTANT



WIDE ANGLE CAMERA



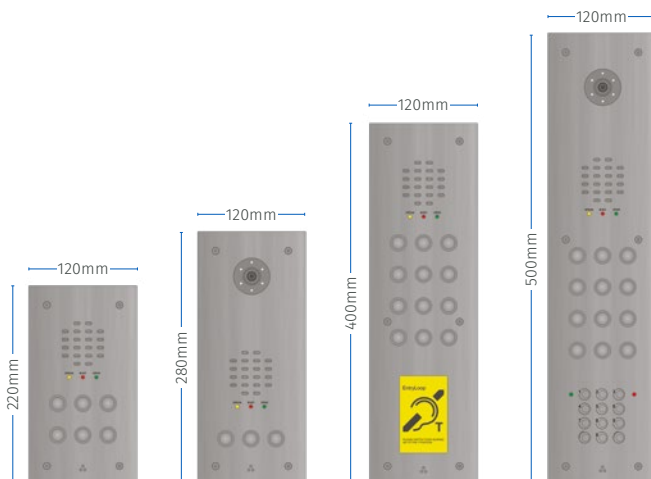
EQUALITY ACT 2010



HARD OF HEARING



IK09



4212 DIGITAL VANDAL RESISTANT ENTRY

The **4212** is a vandal resistant door entry panel that's best suited to low, medium and high-rise buildings. It includes many features that makes the process of calling an apartment from an entrance easier. These include a graphical LCD screen which displays text and intuitive icons during the calling progress.

The voice annunciation feature verbally guides the visitor through the process of calling an apartment. What's more, the backlit keypad with piped number 5 key not only allows the keypad to be used when lighting is poor but also aids visually impaired visitors, making it fully compliant to the Equality Act 2010 requirements.

FEATURES:

- Back lit keypad
- Back lit graphical LCD display
- Voice annunciation
- Call progress
- Bus cabling system
- Editable display logo
- Wide angle day/night camera
- Integrated timeclock

KEY:



VANDAL RESISTANT



WIDE ANGLE CAMERA



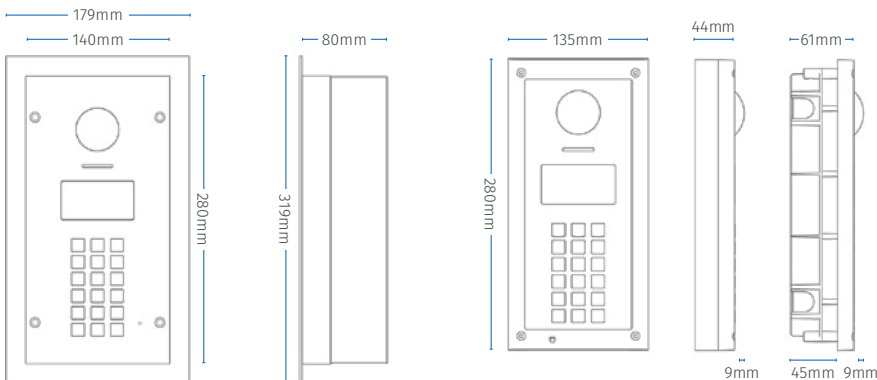
EQUALITY ACT 2010



HARD OF HEARING



IK09



3000 SERIES AUDIO TELEPHONES

The **3000** series telephones suit a range of applications. The range starts with a standard telephone (**3171**), which has a door release button and spare dry contact service button. Next is the **3172** which introduces a slide mute switch to enable the resident to switch the telephone off when they do not wish to be disturbed.

The final handset in the **3000** range comes in the form of the **3176**, which has been designed based on feedback and recommendations from many local authorities. The **3176** integrates all of the above features, including a large lock release button which is a different shape and size, and separated from, the privacy switch button to avoid accidental operation. The privacy button is timed with selectable times from 15 minutes through to 16 hours.

FEATURES:

- Privacy of speech and lock release
- Induction coil (optional)
- Green door open LED
- Red privacy LED
- Fixed or timed privacy (15 minutes - 16 hours)
- Concierge call back facility
- Local doorbell input
- Alarm input to signal event to concierge i.e. smoke detector/intruder alarm/panic button

MODELS:

- **3171** (Standard Telephone)
- **3172** including slide mute switch
- **3176** including timed privacy & LEDs (15 minutes - 16 hours)

ACCESSORIES:

- Desk kit (**3038**)
- Induction coil for hard of hearing (**INDCOIL**)

KEY:



HARD OF HEARING



5178 ECLIPSE AUDIO APARTMENT STATION

Available for use with the **VX2200** system, the **5000 Series** audio eclipse range can be identified by its compact design and hands-free function which can be user selected between simplex speech or voice switched speech, a feature which is beneficial to many local authorities.

The low-profile surface mount units are manufactured from ABS plastic and are available in a white finish.



FEATURES:

- Privacy of speech and lock release
- Key function buttons: "ANSWER CALL", "DOOR OPEN" and "SERVICE"
- Door open LED
- Red privacy LED
- Timed privacy (15 minutes - 16 hours)
- Concierge call back facility
- Local doorbell input
- Alarm input to signal event to concierge i.e. smoke detector/intruder alarm/panic button

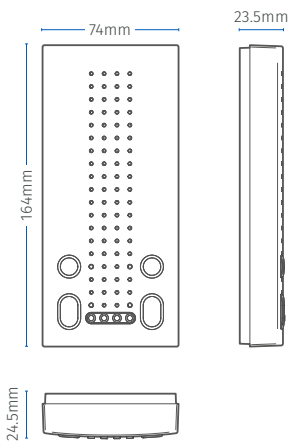
KEY:



HANDS-FREE

ACCESSORIES:

- Desk kit (**5138**)



6276 COLOUR VIDEOPHONE

The **6276** for the **VX2200** system carries a 3.5" colour LCD screen, low profile design, tactile push buttons, camera recall, door release and handset as well as a very useful feature of timed privacy which allows each apartment to select their own privacy time.

The timed privacy is a very popular choice with local authorities and housing associations because it enables tenants to put their videophone in a 'Do Not Disturb' mode which will automatically switch off and allow calls through after a pre-set time.

A picture memory facility is also available as an optional feature enabling up to 100 pictures to be stored all including a time and date stamp. A picture can be taken automatically (for example when a visitor calls and you're not at home) or manually. Pictures can be reviewed using a simple scroll menu.

FEATURES:

- Privacy of speech and lock release
- Door open LED
- Red privacy LED
- Fixed privacy or timed
- Concierge call back facility
- Local doorbell input
- Alarm input to signal event to concierge i.e. smoke detector/intruder alarm/panic button
- Optional picture memory (Suffix/MV to the code)

ACCESSORIES:

- Desk kit (**62931**)



6300, 6400 & 6700 SERIES VIDEO MONITORS

Low cost, high resolution LCD screen video monitors available with 3.5" (**6300 Series**), 4.3" (**6400 Series**) or 7" (**6700 Series**). The monitors are manufactured in ABS impact resistant plastic in a low-profile surface mount design.



FEATURES:

- Privacy of speech and lock release
- Door open LED
- Red privacy LED
- Fixed privacy or timed
- Concierge call back facility
- Local doorbell input
- Alarm input to signal event to concierge
- Picture memory (Suffix/MV to the code)

MODELS:

- **6300 Series 6378**
- **6400 Series 6478**
- **6700 Series 6778** (White)
- **6700 Series 6778BL** (Black)

ACCESSORIES:

- **6300 Series desk kit (63931)**
- **6400 Series desk kit (64931)**
- **6700 Series desk kit (67931)**

KEY:



HANDS-FREE

GSM 2270

A new addition to the **VX2200**, the **2270** enables audio calls to be made to any phone or land line. It's a 2G/3G device which is suitable for new and existing systems, both 2 wire audio and 6 wire video versions, making it highly applicable to local authority housing.

The **2270** offers residents the facility to answer calls from their door entry system even when they're not at home, offering additional security to their home. The device diverts a call directly to the resident's mobile or alternative landline, so that they're always aware of who is visiting, even when they're away. A great benefit of the **2270** is the facility to connect multiple entrances (up to 15) using only a single SIM card.

FEATURES:

- GSM technology
- Control access from anywhere via your phone
- Effectively manage the calls of vulnerable tenants and those with additional needs
- Send SMS messages from housing block in the event of an emergency
- Simple and easy offsite programming
- 100% compatible with flagship **VX2200**
- The GSM **2270** can be used with both low rise and high rise **VX2200** intercom systems

VX2200 LIFT INTERFACE

Part code: **2216**

New to the **VX2200**, the lift interface module **2216** enables lift access management within a block of apartments such as controlling the calling of a lift and restricting access to certain floors in the building, if required. When a resident grants access to a caller by pressing the lock release button on their apartment device, it will release the main door to allow access to the building while also calling the lift and allowing it to travel to the occupant's floor.

Each apartment can be independently programmed to grant access to one or more floors and can be programmed to interface with one or more intercom panels. Programming can be carried out via a PC software programme connecting to the lift interface through a micro USB connection. The module includes 6 independent dry contact relays to control up to 6 floors. Multiple modules can be used together to access up to 48 floors in total.

Additionally, the module can also be used as a general-purpose input/output module and includes 6 opto isolated inputs that can be programmed to either activate relays or send alarm messages to a concierge. They are manufactured in high impact ABS plastic and can be mounted direct to the wall or DIN rail.

FEATURES:

- Dimensions - 157.5mm x 105mm x 65mm (9 Module DIN)
- 12Vdc power required
- 6 dry contact outputs - normally open and normally closed relays 10A@24Vd, 5A@230Vac
- 6 inputs
- Micro USB port with PC software programming
- 6-way dip switch
- Maximum floors - 48

VX2200 CONCIERGE

The **2220** IP concierge is also a new addition to the **VX2200** and enables a concierge to be connected via a LAN or WAN to one or more **VX2200** systems. It uses either conventional cable or fibre optics and both audio and video are streamed.

This is particularly useful when one concierge operator is responsible for multiple social housing apartment blocks or the concierge is remote from the apartments. For example, a control room.

The concierge has full control over the system, being able to both intercept calls and divert calls as required or on an apartment by apartment basis.

FEATURES:

- Available as a desk mount videophone with touchscreen
- Multiple operators can be used on each system
- Full event log database is held and can be examined if required
- Can be added to new or existing **VX2200** systems easily
- If the concierge goes offline, each apartment block will switch to standalone mode, so system operates normally

MODELS:

- Audio block unit **2220A**
- Video block unit **2220V**
- Desk mount concierge **CST2220**

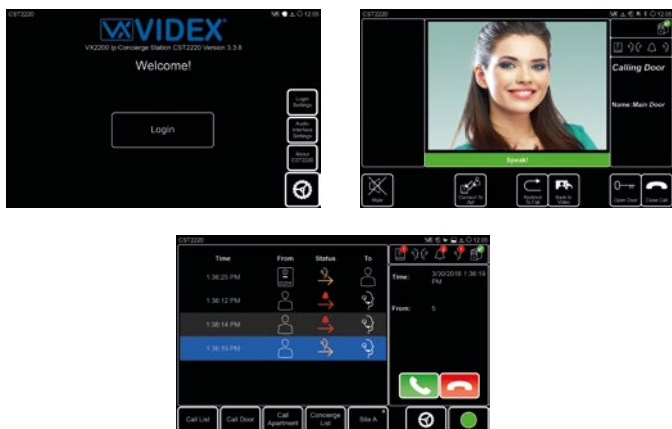
KEY:



ETHERNET TCP-IP



Screens:



VX2200 APARTMENT INPUT MODULE

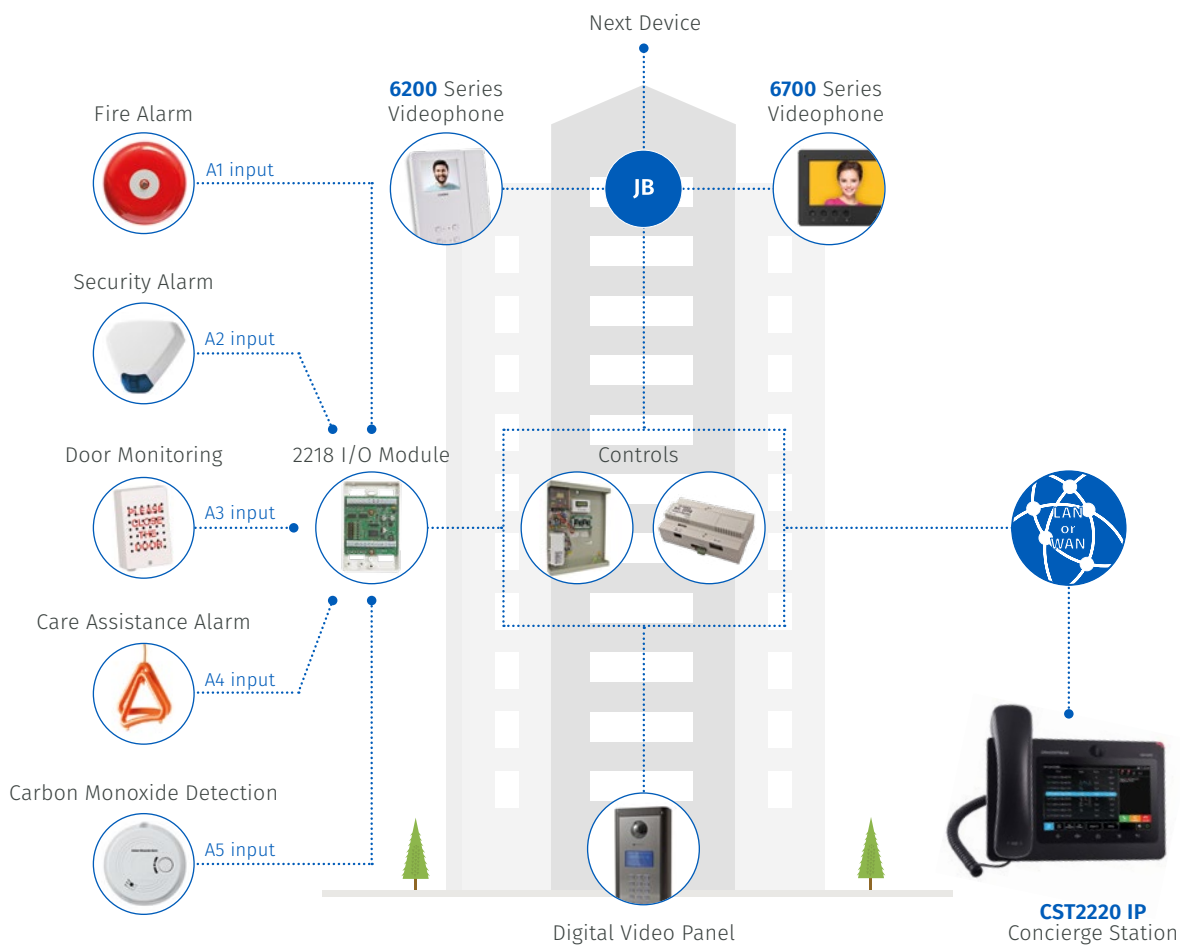
Part code: **2218**

A new addition to the **VX2200**, the input module **2218** is designed to be used within each apartment as an extension to a telephone or videophone. The interface includes eight opto isolated inputs which can be used to contact a concierge. For example, the module could interface with a fire alarm, security alarm, panic button, smoke alarm or pull cord to contact the building management or concierge.

The interface works with the **VX2200** bus system and is addressable to ensure the concierge knows where the alarm originated. They are manufactured in high impact ABS plastic and can be mounted direct to the wall.

FEATURES:

- Dimensions - 110mm x 70mm x 3mm
- 12Vdc power required
- Outputs include **VX2200** 2 wire bus or **RS485**
- 8 Opto isolated inputs (5 – 24Vdc)
- 8-way dip switch + 2-way dip switch



VX2200 SYSTEM ACCESSORIES

FIREMAN SWITCHES

Drop key fireman switch
Drop key
Crescent key fireman switch
Crescent key

FS/DK
FSK/DK
FS/CK
FSK/CK



EXIT BUTTONS

Flush stainless steel with large green dome button
Large 85mm diameter button
Stainless steel standard button

SPB004F
EBPP02
SP80



BREAK GLASS

Resettable green break glass

SP86/G



COMBINED BREAK GLASS AND EXIT BUTTON

Double pole break glass with change over exit button

DU-GB/PTE

HIGH QUALITY LOCK RELEASES

Mortice 12Vdc (power to unlock)
Monitored mortice 12Vdc (power to unlock)
Mortice 12Vdc (power to lock)
Monitored mortice 12Vdc (power to lock)

201N
203N
204N
206N



MAG LOCKS

Standard 1200lb 12/24Vdc monitored
Z & L bracket set for standard mag lock
Mini monitored
Z & L bracket set for mini mag lock

82N/M
90N
87N/M
91N



APARTMENT ACCESSORIES

Extension sounder
Extension strobe light
Conventional telephone interface adaptor
Conventional telephone interface (requires 2280)

512D
ES/2
2280
380N



GENERAL ACCESSORIES

Universal relay
Timed universal relay
Digital door panel programming software
4212 door panel programming software

506
506T
SP37
4212PK



PORTAL PLUS ACCESS CONTROL

Portal Plus is a popular choice for social housing access control because it is scalable from simple one entrance systems through to multiple entrances with local or remote management facilities.

The Portal Plus system is based on two entrance controllers and is managed via a PC client/server application which can run on an onsite PC or remotely via the internet with the option for multiple clients if required. A simple setup programme guides you through the installation process and technical support is just a phone call away should you require assistance with the setup.




KEY FEATURES THAT APPEAL TO LOCAL AUTHORITIES INCLUDE:

- A messaging system that enables events to be brought to the user's attention with pop-up windows and sound or ability to be automatically emailed. An event can also activate any of the available doors and outputs on any of the controllers and can be used to run other applications if required
- A quick user view option now allows users' details to be displayed quickly after an event, such as entry into the building, which means security checks can be made quickly and efficiently
- For high security applications, 'Global Anti-Pass Back' is available allowing entry and exit readers to be selected across any number of controllers. Global output triggers are also a new feature allowing any of the four outputs on each controller to be activated by any other controller or via the PC software

Many of the features of Portal Plus can then be integrated into third party applications to offer the end user a more bespoke application.



KEY:

-  ACCESS FOBs & CARDS
-  WEB
-  ETHERNET TCP-IP



MIACCESS

MiAccess is one of our newest systems to the social housing access control market. It's a standalone, offline proximity system which means it's perfect for social housing developments because it can be used for buildings that have single or multiple entrances and doesn't require any cabling to provide a comprehensive access control solution.

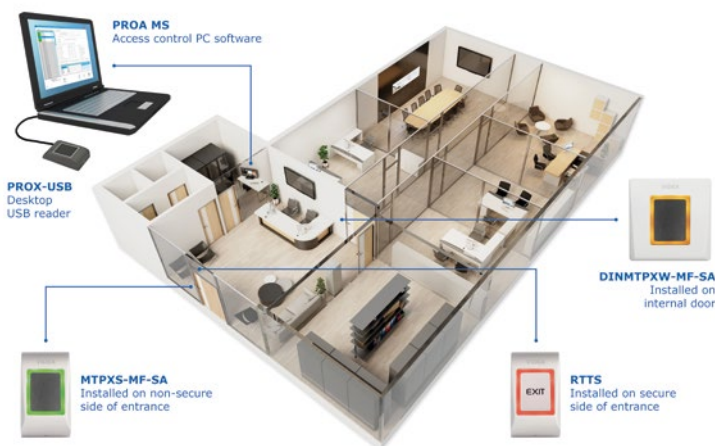
When the need arises to programme new fobs with MiAccess, an engineer does not need to visit the development site as everything can be controlled on a PC, from an office, with newly programmed fobs sent out to residents via post.

FEATURES:

- No running costs and free issue software
- Up to 80 doors per development
- Fast and cost-effective installation - no cabling between doors
- Complete flexibility
- Coloured fobs
- Multiple access rights for each user and door
- Perfect for where network restrictions apply
- User cards and fobs can be programmed remotely without the need to visit site
- User friendly PC software
- Very cost effective

KEY:

-  ACCESS FOBs & CARDS
-  MIFARE ACCESS
-  CLEAN ENERGY



BESPOKE ENTRY SOLUTIONS

One of the most important aspects of any door entry system is the entrance station as it is the first point of contact with the building for visitors and tenants alike.

Whether it's low or high-rise housing, Videx provide an inhouse bespoke service on our door entry and access control systems. All of our vandal resistant panels from our popular **VX2200** system can be customised as you wish to meet your requirements.

We can develop your range of door entry systems exactly how you want them – size, style, look and feel. The engraving service is a key part of our bespoke, tailored approach. As well as featuring engraving for apartment numbers, many local authorities ask for a specific logo or the association or apartment block name on the panel. Engraving can also be used to highlight an out-of-hours or emergency contact or reception/concierge service for example.

As the engraving can be done inhouse as the system is built, delivery time can be reduced as there's no need to outsource the engraving process before the system(s) are delivered to site - saving time, cost and helping to reduce your carbon footprint.



NORTHERN OFFICE

Unit 4-7 Chillingham Ind. Estate, Chapman Street, Newcastle Upon Tyne, NE6 2XX
T 0870 300 1240 • F 0191 224 1559 • E projects@videxuk.com

SOUTHERN OFFICE

1 Osprey, Trinity Park, Trinity Way, London, E4 8TD
T 0870 300 1240 • F 020 8523 5825 • E projects@videxuk.com

www.videxuk.com



Registered in England 1941721 VAT Reg No. GB 417 8007 59