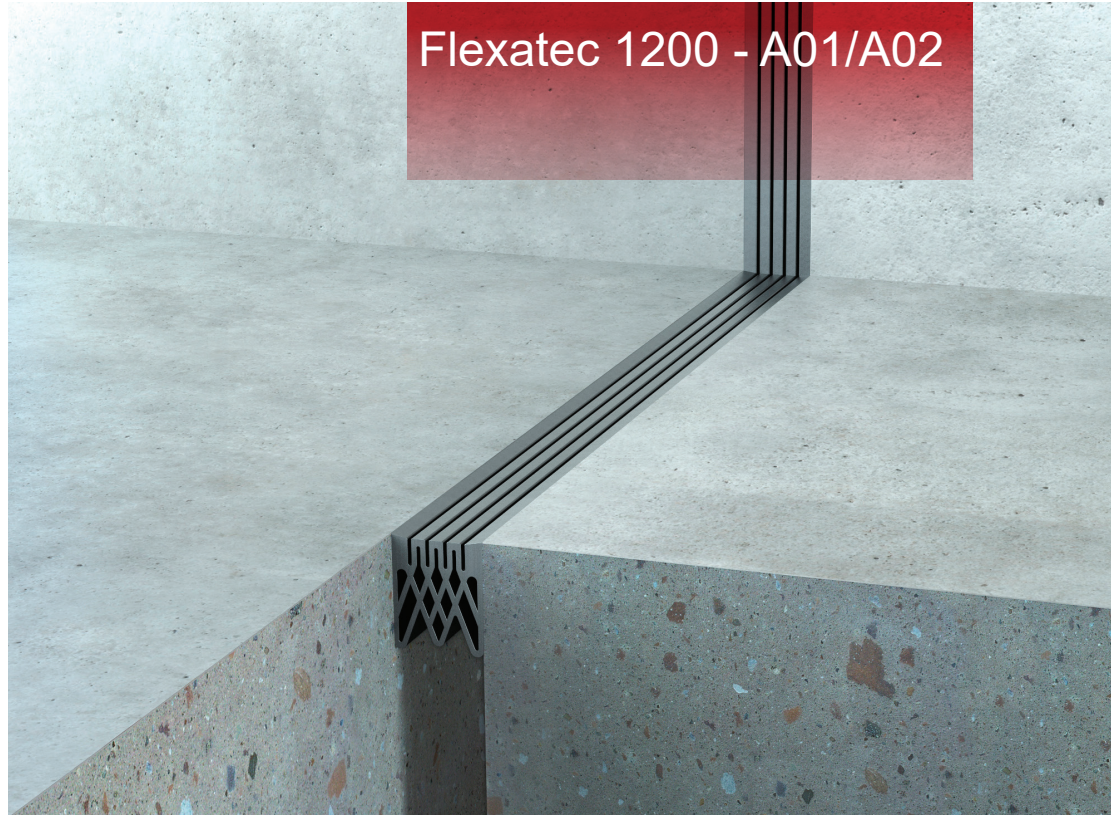


Method Statement

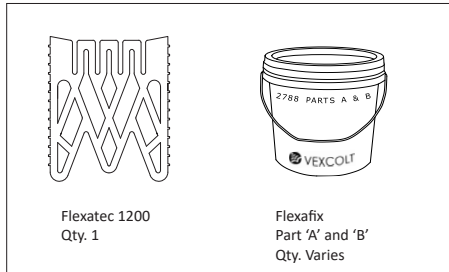
Flexatec 1200 - A01/A02



Content	Page No.
Assembly Components	2
Fitting Hardware	2
Before You Start	2-3
Preparation	3
Mitres and Intersections	4-5
Joint Installation	6-10
Protection	11
Aftercare	11

Assembly Contents :

A01/A02



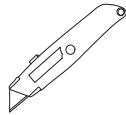
Fitting Hardware :



Metal Measuring
Tape

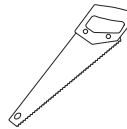


Brush

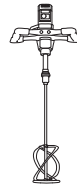


Stanley Knife

or



Fine Tooth Hand Saw



Jiffy Paddle Mixer

or



Drill



Jiffy Paddle



Super Glue



Floor Tape

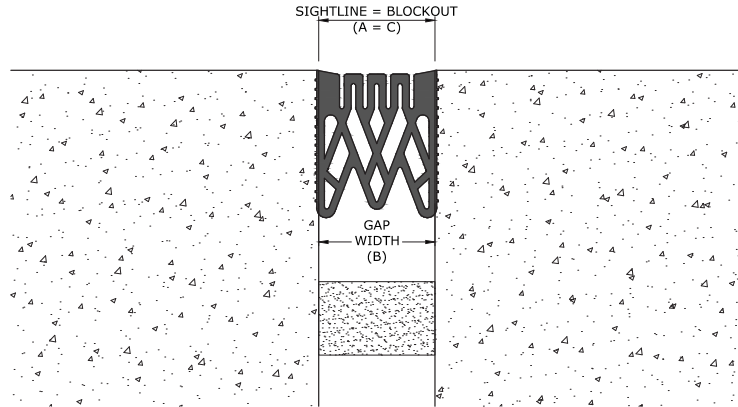
Before You Start :

- Remove joint components from the packaging taking care not to damage exposed surfaces of the profile material.
- Verify that structural gap and block out dimensions are in conformance with submittal data prior to commencing work.

Flexatec 1200 : A01

Product Details

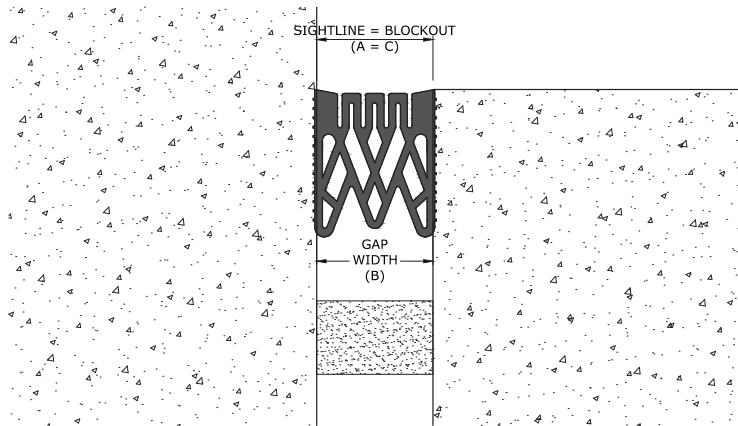
Product Number	Sightline A (mm)	Blockout C (mm)
1200-A01-025	25	-
1200-A01-050	50	-
1200-A01-075	75	-
1200-A01-100	100	-



Flexatec 1200 : A02

Preparation :

- Ensure that the floor is flat and levelled and debris free.
- The fire barrier and waterproofing membrane must be installed in the structural gap before the architectural joint system. Refer to separate method statement.



Mitres and Intersections :

Below are the different cut types of joining of lengths. Typically cut with a stanley knife or fine tooth hand saw and cold bonded together using super glue.

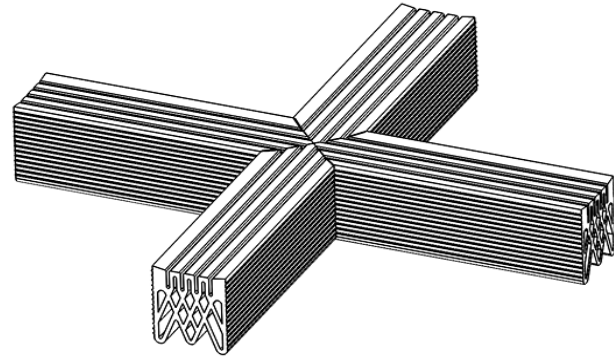
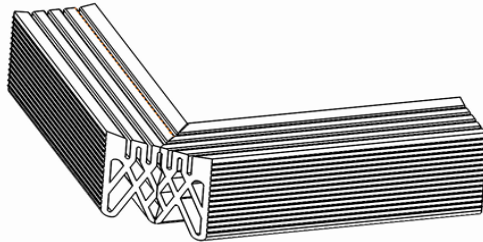
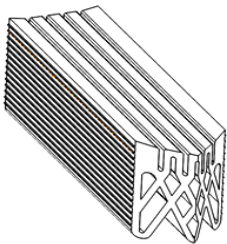
Floor to floor mitres



Floor to wall mitres



Floor to floor X intersection mitres



Joint Installation :

Components

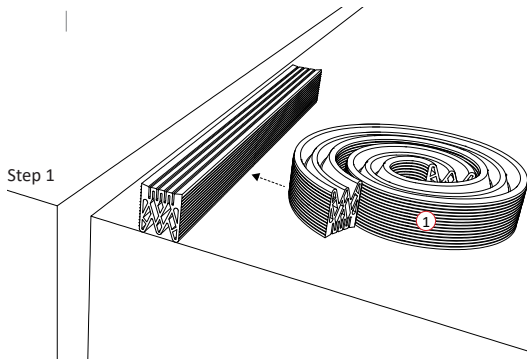
- (1) Flexatec 1200
- (2) Flexafix

Mixing the Flexafix

- Pour Part 'A' and 'B' together and thoroughly blend using a slow speed drill (400 RPM) and a jiffy mixer paddle. The resultant mix should be a uniform grey colour and no marbling should be evident.

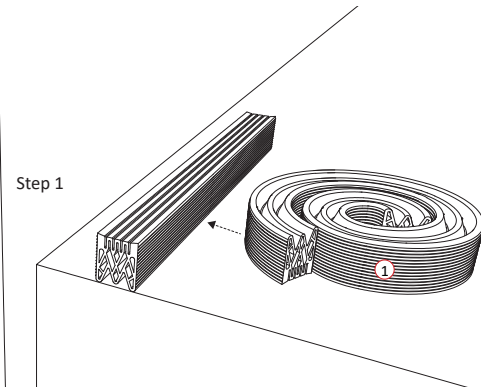
The Flexafix is now ready to apply.

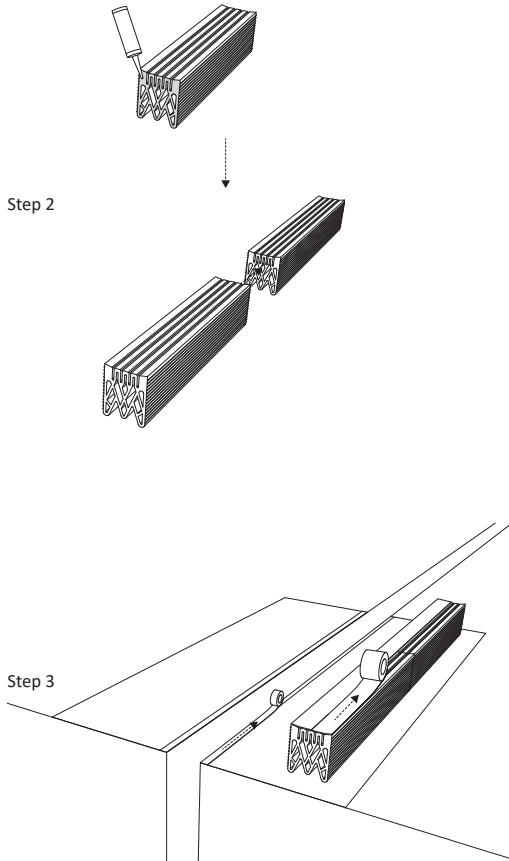
Flexatec 1200 : A01



- Lay the 1200 joint next to the gap. Allow it to relax and check for appropriate length and width.

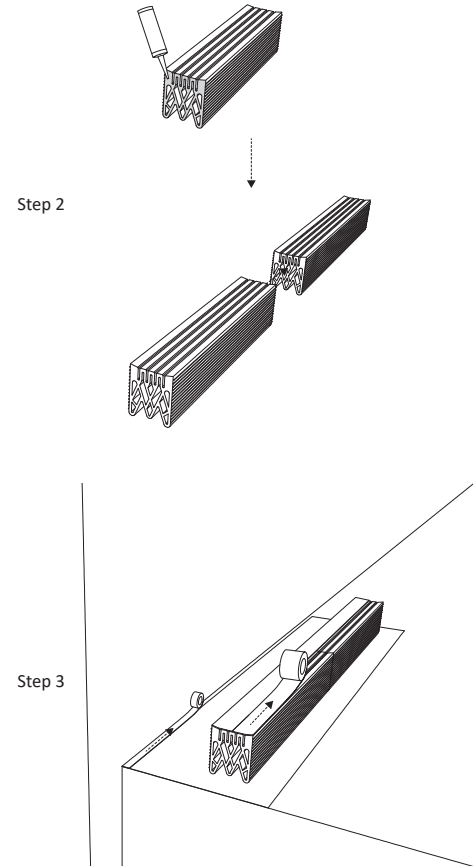
Flexatec 1200 : A02





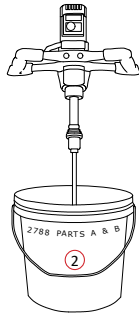
- Apply super glue on one face of joint and press into the other length face.
- This should be made to match on site lengths and to accommodate directional changes, e.g. going up a wall.
- Ensure all welds are fully cool and cured before the Flexafix is mixed.

- Apply floor tape to the exposed surface of the Flexatec joint.
- Mask the area adjacent to the joint opening, at least 100mm wide. Use floor tape or polythene sheeting to keep surrounding areas clean.
- The tape should not enter the structural gap but should be affixed in position approximately 3mm back from the joint edge.



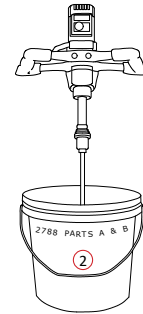
Method Statement

Step 4



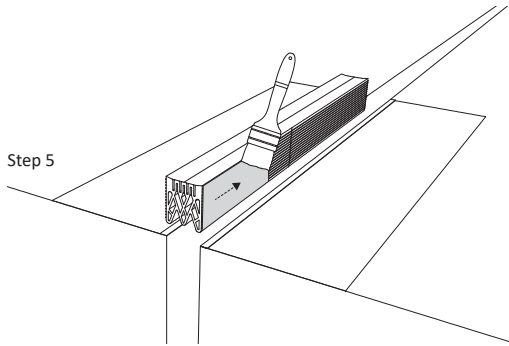
- Begin mixing the Flexafix. Detailed instructions are as shown at the beginning of the joint installation section.

Step 4

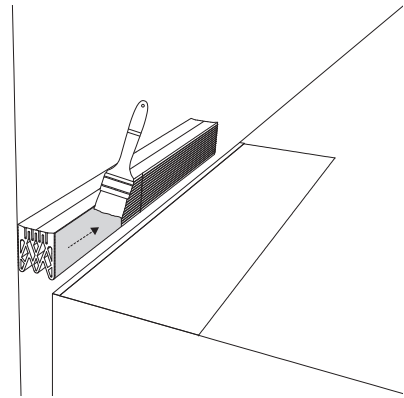


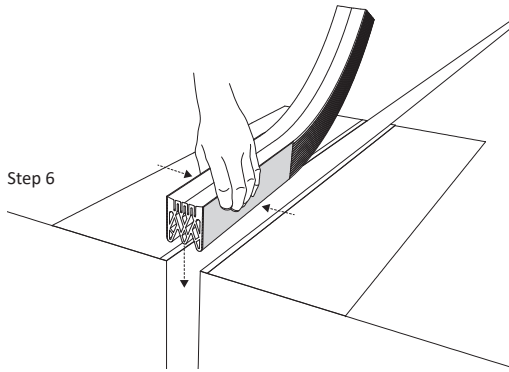
- Either at one end of the structural gap, at an intersection or corner, apply the Flexafix to both sides of the concrete substrate recess surfaces.
- Apply approx. 1mm, ensuring to fully coat the substrate. Flexafix should be applied both sides of the gap in the same direction, ahead of the joint material.
- DO NOT apply the Flexafix more than 6 metres ahead of the joint installation.

Step 5

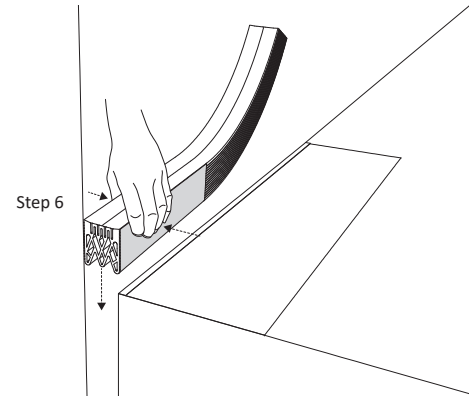


Step 5

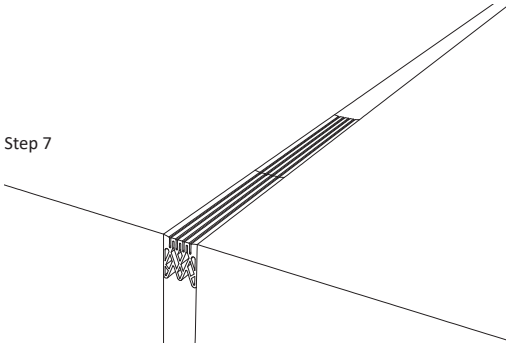




- Using gloved hands, squeezed and press the joint into the gap. The joint should not protrude above the gap, but either flush or 3mm below the gap edge.
- Do not insert at an angle or stretch the joint, as this will affect the performance and water tightness.

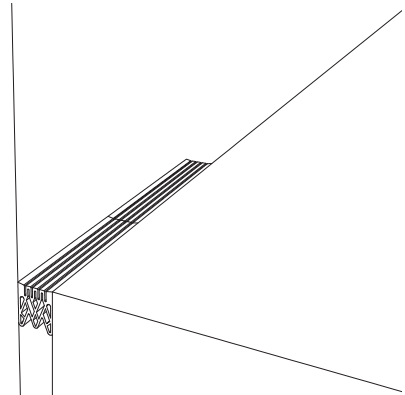


Step 7



- Remove all protective tape whilst the Flexafix is still elastic.
- Allow to cure for 20 mins at 25 °C before use. Curing times will be longer in cooler temperatures.
- The expansion joint system has now been successfully installed. Clean exposed surfaces with non-solvent cleaner as required.

Step 7



Joining Lengths Together

- Join lengths together using super glue.
- Refer to page 4-5 for more details.

Protection :

- We recommend the joint is protected at all times from site traffic, prior to handover.
- Leave tape on until surface side of joint is ready to be exposed to avoid scratches and unwanted marks.

After Care :

Cleaning & Maintenance Instructions:

- All joints should be cleaned using a mild detergent.
- Abrasive cleaning regimes should be avoided as this could, over time, cause damage to the joint.

Please do not hesitate to call or email Vexcolt for your enquiries.

T : +44 (0) 20 8194 5999

W : www.vexcolt.com

Sales

E : info@vexcolt.com

Technical

E : technical@vexcolt.com