

# Method Statement

Fireflex 2500 - A01/A07  
A02/A09





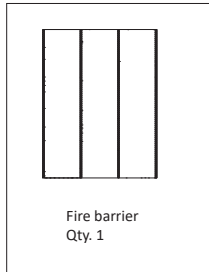
# Contents

<b>Content</b>	<b>Page No.</b>
Assembly Components	2
Fitting Hardware	2
Before You Start	2-3
Preparation	3
Joint Installation	4-7
Protection	8
Aftercare	8



## Assembly Contents :

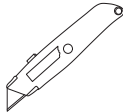
A01/A02/A07/A09



## Fitting Hardware :



Metal Measuring  
Tape



Stanley Knife



Fire Rated Silicone  
Sealant

## Before You Start :

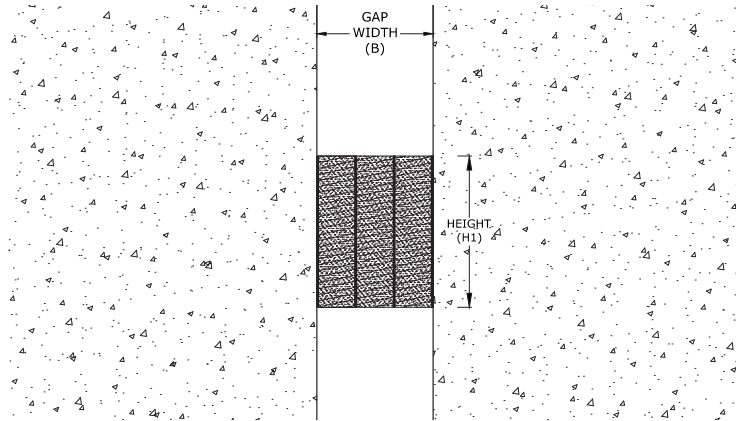
- Whilst the product is not hazardous it is advised that work gloves and eye protection are worn during the installation process.
- Materials should be stored in a clean, dry, heat maintained area at a temperature between 10°C and 32°C.
- Verify that the width of product supplied matches with the width of the uncompressed product as per table below.

## Product Details

Product Number	Gap Width B (mm)	Uncompressed width (mm)
2 Hour Fire Rated (120 mins)		
2500-A0X-025-2	25	53
2500-A0X-035-2	35	61
2500-A0X-050-2	50	90
2500-A0X-075-2	75	126
2500-A0X-100-2	100	170

A0X stands for either A01,A02,A07 or A09

## Fireflex 2500 : A01/A02/A07/A09



## Preparation :

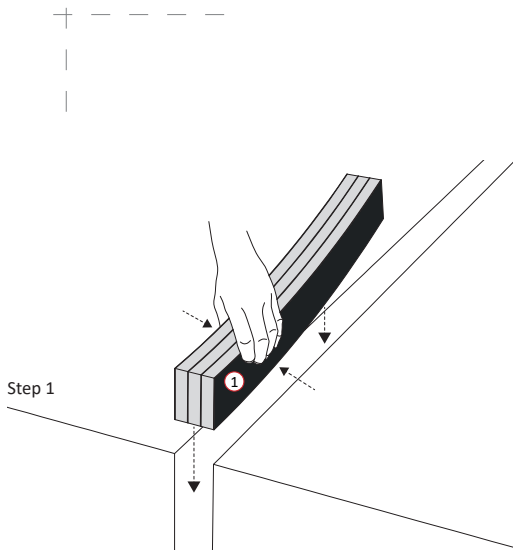
- The fire barrier must be installed in the structural gap before the architectural joint system.
- Carefully remove the fire barrier from its pallet and lay it out in sections along the line of the gap to be filled. Ensure that it is undamaged and safe from construction traffic.

## Joint Installation :

### Components

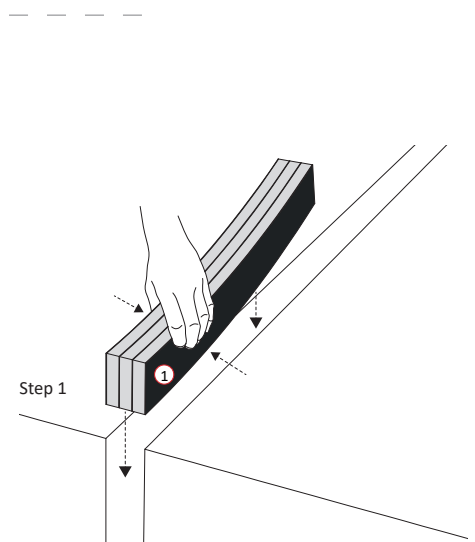
(1) Fire barrier

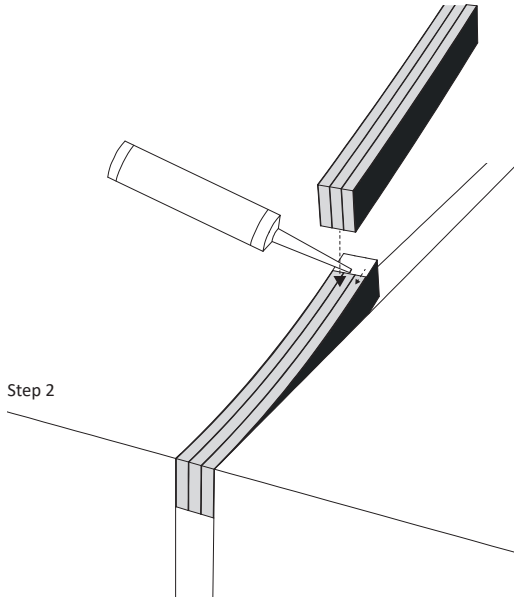
#### Fireflex 2500 : Lap Jointing



- Compress one end of the fire barrier by hand and press into the installation gap.

#### Fireflex 2500 : Butt Jointing

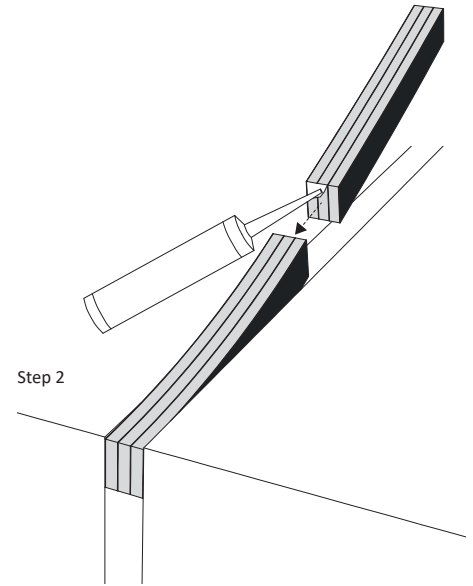




Step 2

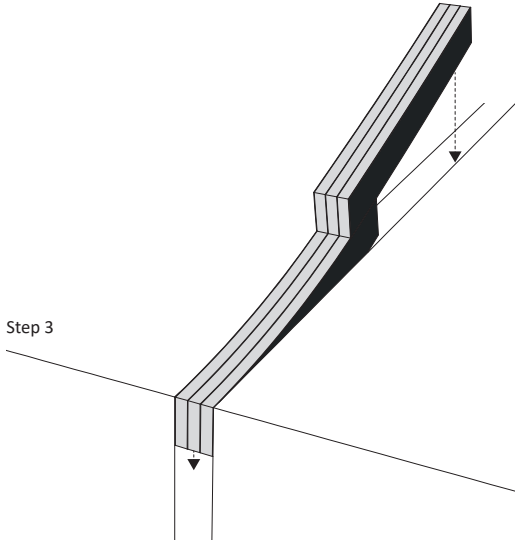
- For lap jointing, junctions between the fire barrier lengths may be formed by applying a layer of fire rated silicone sealant on top and overlapping the barriers by 50mm at either end and press firmly together.

- For butt joining, 'butter' the fire rated silicone sealant on to both ends of abutting fire barrier sections to a depth of 2.0mm each end and firmly press together.



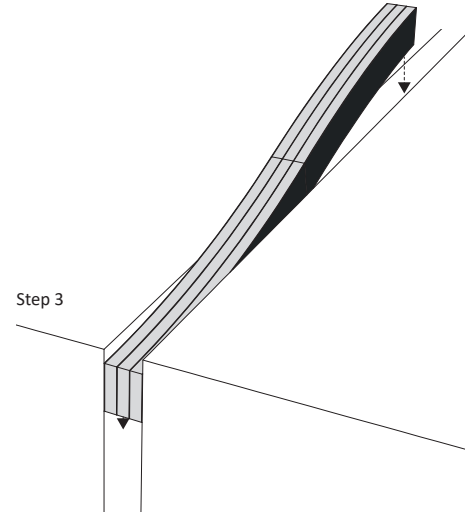
Step 2

Step 3

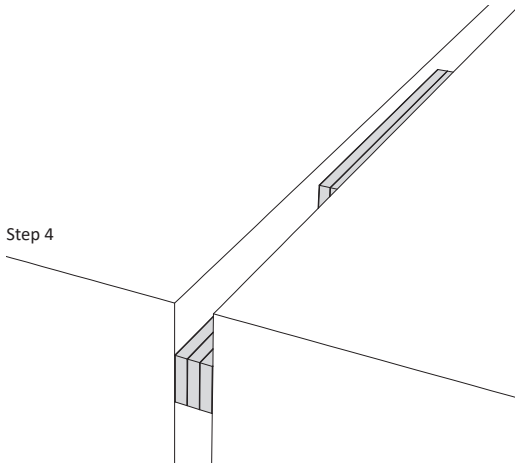


- Compress the joined fire barrier by hand and press the rest into the installation gap

Step 3

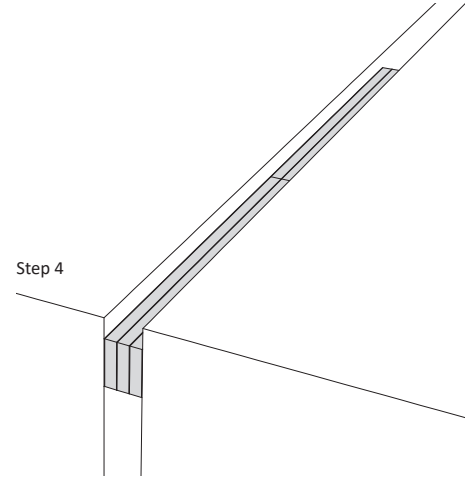


Step 4



- The fire barrier system has now been successfully installed. Install the waterproofing (if required) and joint over the top.

Step 4



## Joining Lengths Together

- Ensure ends are squared off to allow joints to lay flush next to each other.

## Protection :

- We recommend the joint is protected at all times from site traffic, prior to handover.

## After Care :

- The Fireflex 2500 fire barriers are normally hidden beneath expansion joint covers and require no cleaning.

---

Please do not hesitate to call or email Vexcolt for your enquiries.

**T** : +44 (0) 20 8194 5999

**W** : [www.vexcolt.com](http://www.vexcolt.com)

Sales

**E** : [info@vexcolt.com](mailto:info@vexcolt.com)

Technical

**E** : [technical@vexcolt.com](mailto:technical@vexcolt.com)

