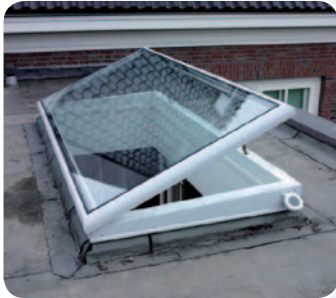




## Brakel® Greenlite



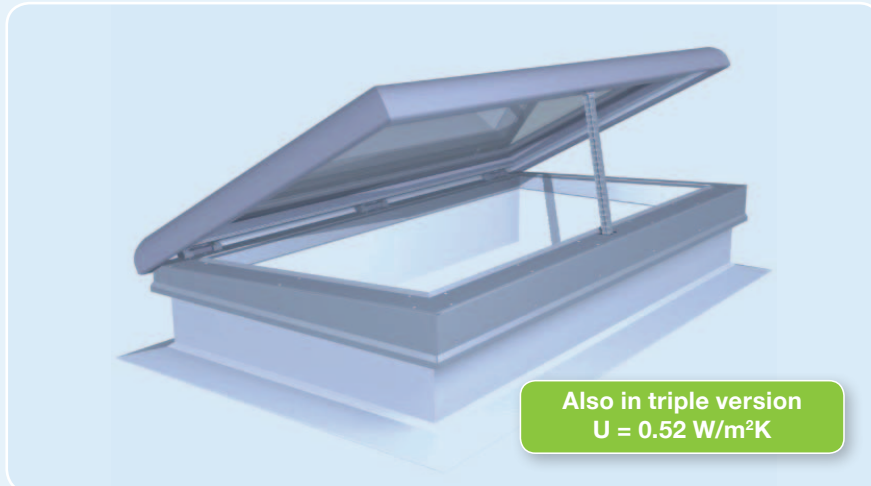
### Greenlite, the 'green' glass rooflight

#### The sustainable alternative to plastic

Rooflights and skylights are highly popular means of allowing in natural light. In the past they were made nearly exclusively of synthetic materials. As the market leader in glass roof structures, Brakel now introduces a glass rooflight that makes the most effective possible use of the valuable natural sources of light and air.

#### Daylight system of the future

Sustainable, energy efficient and transparent. Besides allowing daylight ingress, the Brakel glass rooflight also makes an effective contribution towards daily ventilation. The Greenlite triple version thereby delivers, with a U-value of  $0.52 \text{ W/m}^2\text{K}$ , the highest performance thanks to a triple-wall structure and glazing.



#### Made to measure: thus suitable for newbuild and renovation projects

Greenlite combines a high insulation value with excellent transparency. The glass rooflight has a pitch of  $3^\circ$  and is available with short delivery times in any desired dimensions and flange size. Always ensuring a perfect fit to both existing and new substructures. Also, the Greenlite's modern design is pleasing to the eye.

## Green Building Products

As a leading partner in its field, Brakel endeavours to remain a forerunner in the area of corporate social responsibility. Given that with our products, we let in the best that nature has to offer, it is only natural that we also care greatly for the environment. We therefore seek to integrate sustainable solutions in our working methods, products and services, wherever possible.

We have categorised our highly extensive product range according to the levels of sustainability and comfort applicable. The many energy efficient products and systems in the range can be recognised by the butterfly icons that they bear.



functionally applicable in accordance with current qualifications / standards



compliant with raised sustainability requirements



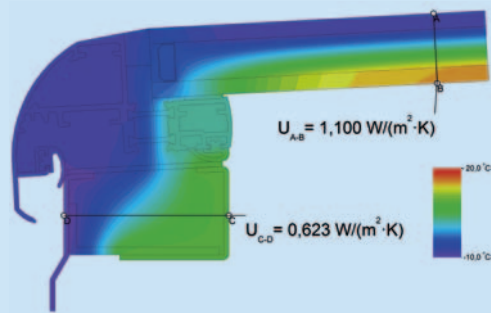
compliant with high sustainability requirements



entirely in keeping with a sustainable solution

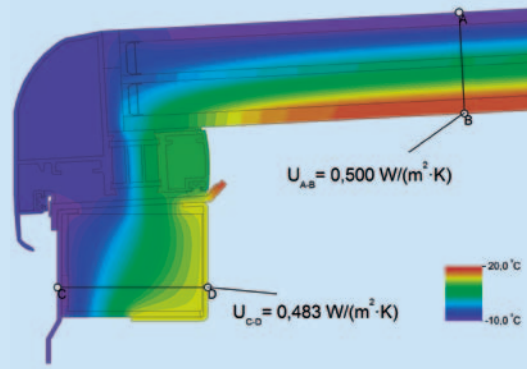
### Greenlite

- Twin-wall structure
- Double glazing  $U = 1.1 \text{ W/m}^2\text{K}$
- Total U-value =  $0.97 - 1.02 \text{ W/m}^2\text{K}$



### Greenlite triple

- Triple-wall structure
- Triple glazing  $U = 0.5 \text{ W/m}^2\text{K}$
- Total U-value =  $0.52 - 0.53 \text{ W/m}^2\text{K}$



## Dimensions throat size

		FLEXIBLE LENGTH						
		in mm	600 mm - ≤ 1900 mm	≤2000	≤2100	≤2200	≤2300	≤2400
FLEXIBLE WIDTH	600							
	≤700							
	≤800							
	≤900							
	≤1000							
	≤1100							
	≤1200							
	≤1300							

- = Greenlite + Greenlite triple
- = only available in triple model
- = not available

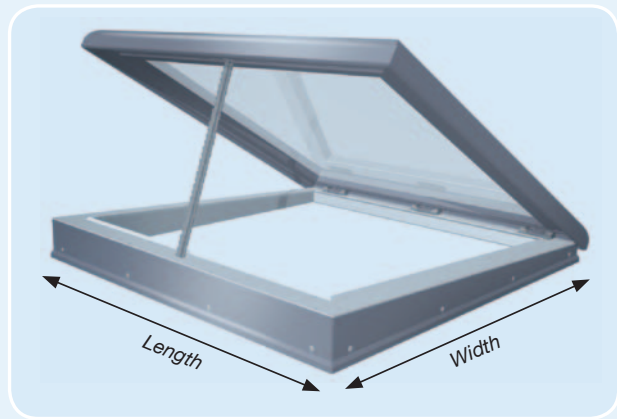
Composition highly insulated safety glass:

- Greenlite model:  
6 mm (toughened\*) float - 15 mm Argon 90% - 3.3.2 laminated safety glass
- Greenlite triple model:  
6 mm (toughened\*) float - 16 mm Argon 90% - 4 mm float - 16 mm 90% Argon - 3.3.2 laminated safety glass

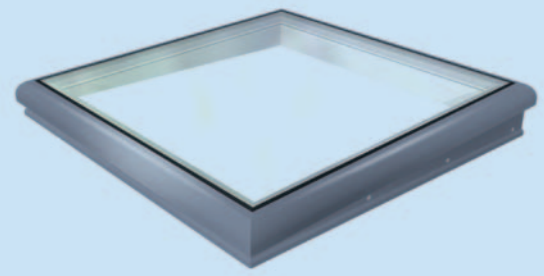
(\* Toughened outer sheet depending on the span of the glass)

## Greenlite: made to measure

Greenlite is tailor-made according to specifications, ensuring a perfect fit to every structure. This makes Greenlite ideal for both newbuild and renovation projects!



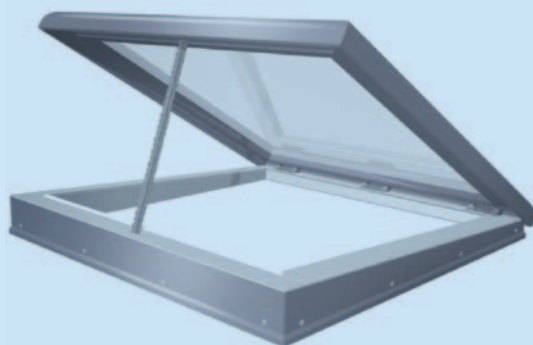
### GREENLITE - fixed model



- High insulation value, air & watertightness
- High transparency
- Anti-burglary
- Fire spread resistance
- Excellent comfort level
- Ordered to size
- Flexible flange size for any support width



### GREENLITE - ventilation model



- + Suitable for daily ventilation
- + Large opening height: 300 mm
- + Motor controls 230V
- + Including remote control
- + Various options available



## Highly energy efficient rooflight

Sustainability was key in the development of the Greenlite. The glass rooflight has a fully thermally separated system with various coldflow blocks.

This system guarantees a uniform heat flow spread without significant local differences, thereby excluding the chance of condensation under normal conditions.

## Large opening angle for maximum ventilation

A healthy interior climate requires the discharge of contaminated air, moisture and heat through well-balanced daily ventilation. With a large opening height of 300 mm the ventilated model of Greenlite provides a generous vent. This allows in plenty of fresh air and sunlight for a good indoor climate.

## Flexible flange size

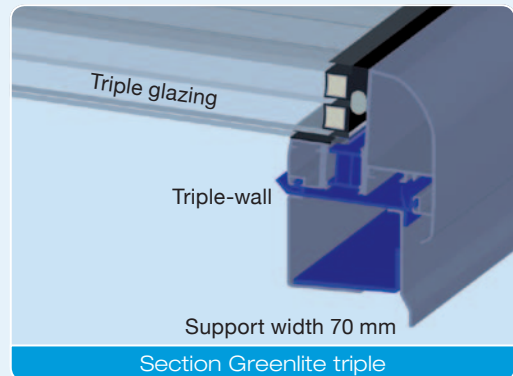
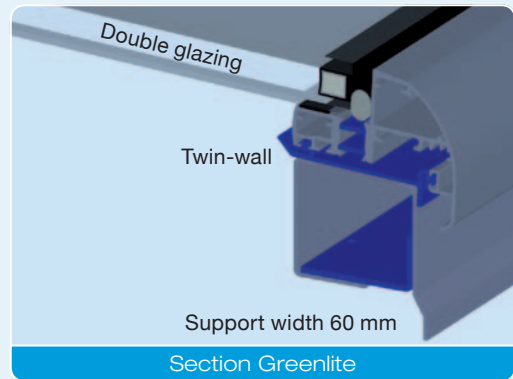
Greenlite has a standard support width of 60 mm, (triple model = 70 mm). In case of a broader substructure, a flange adapter up to max. 200 mm is available for every flange type. The result is a perfect fit each time, regardless of the substructure.

## Specifications

- Fixed or ventilated under an angle of 3°
- Structurally bonded highly insulated safety glass (LTA 77 / ZTA 54), triple model (LTA 63 / ZTA 36)
- Coating exterior RAL 7047 / interior RAL 9010
- Frame fitted with high-quality insulation material
- Invisible hinges

## Test results

- U value in accordance with EN 10077-2:
  - Greenlite = 0.97 – 1.02 W/m<sup>2</sup>K
  - Greenlite triple = 0.52 – 0.53 W/m<sup>2</sup>K
- Air permeability: EN 1026: 600 Pa, EN 12207: Class 4
- Water tightness: EN 1027: 1050 Pa, EN 12208: Class E1050
- Resistance to varying wind loads: Class C5, 1000 Pa (= P2) deflection < 1/300 in accordance with EN 12210 / EN 12211
- Acoustics: Rw = 31 dB in accordance with EN ISO 10140-2
- Impact resistance: 1200 J



## Options

- Highly insulated solar control safety glass (LTA 58 / ZTA 34), triple model (LTA 54 / ZTA 31)
- Inner pane opal 3.3.2 (LTA 59 / ZTA 51), triple model (LTA 49 / ZTA 35)
- Flange adapter for flexible flange size and type
- Sun screen: windproof version (color cloth gray)
  - manual (stick with length 2 m)
  - motorized with remote control
- Interior sun blind pleated (color cloth silver)
- Anti-insect mesh
- Rain sensor
- Solar panel for solar power (M24V)
- Upstand PVCu 16/0
- Coated in any standard RAL colour