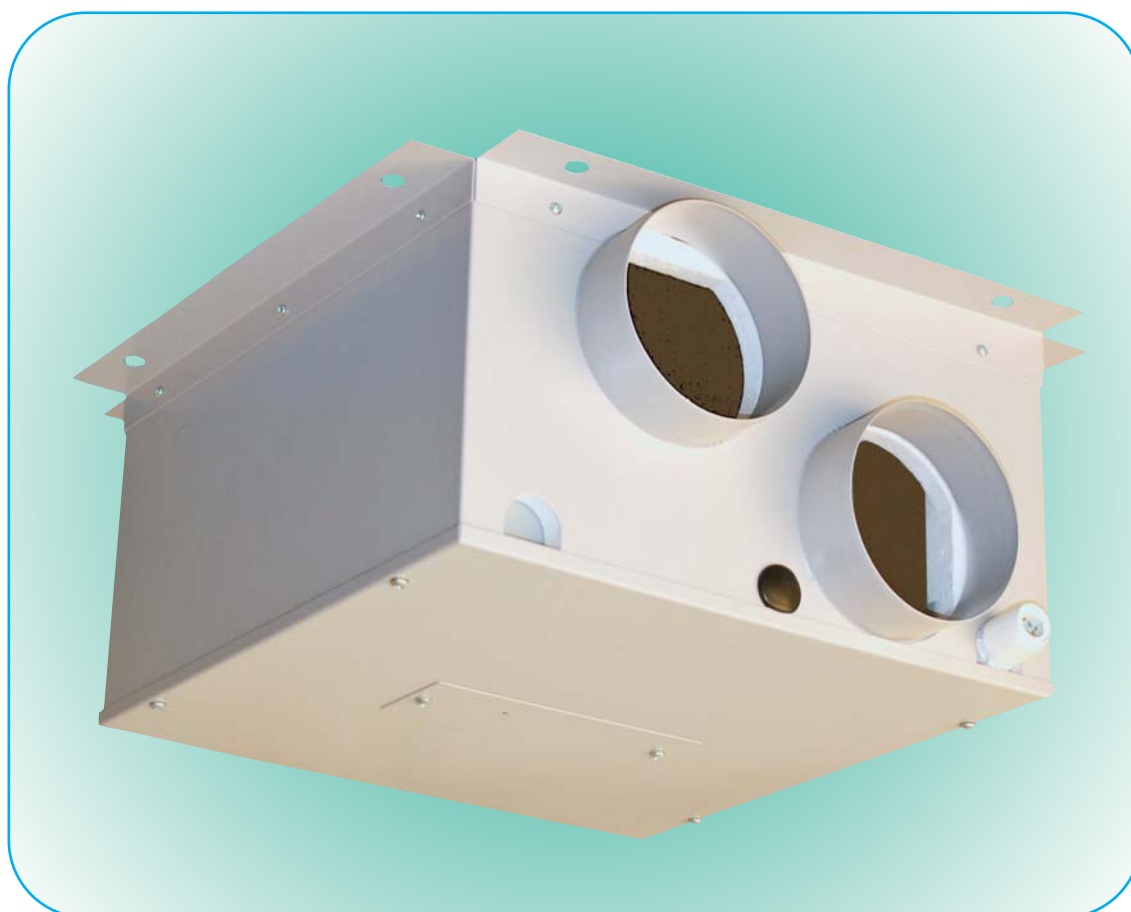


WHHR Mini DC



MVHR - WHHR Mini DC

- with or without summer bypass
- energy efficient EC motor
- efficient, low energy solution to controlling condensation and pollution
- provides low level continuous ventilation in a kitchen and 1 other wet room
- up to 92% heat exchange efficiency
- variable choice of low (trickle) and boost speed at installation
- very compact 230 x 400mm square
- for cupboard, loft or ceiling void
- low noise levels and running costs
- compliant with Building Regulations Parts L1 2010 and F 2010
- manufactured in UK to ISO 9001
- with electronic control "Plus"



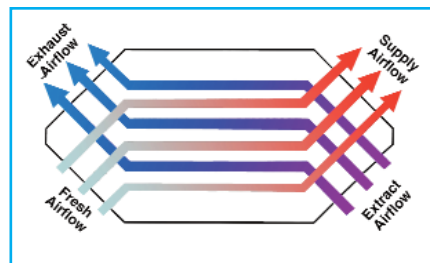
WHHR Mini DC

GENERAL FEATURES

- for 1 or 2 bedroom apartments, hotel rooms, student accommodation, extra care facilities etc
- Up to 29.8 litre/sec at 50Pa - max 34 litre/sec capacity
- up to 92% of heat recovered from extracted air
- easy and economical installation and maintenance
- ideal for fitting into voids, false ceilings or cupboards (bottom access only)
- variable low (trickle) and boost options
- boost speed triggered by a switched live connection from:
 - a light switch (if more than one light switch is used, **each one must be a double pole switch**)
 - DRH240 (dynamic remote humidistat)
 - PIRFF (passive infra red)
 - THM (thermostat)
 - a remote switch/pull cord
- low noise levels - below 20dB(A)
- low running costs
- extra security - no need to open windows
- 2 year warranty

TECHNICAL FEATURES

- compact unit
- casing from steel sheet - epoxy paint finish
- thermo-acoustic lining
- low energy EC brushless motor
- single width, single inlet, direct drive, backward curved impellers
- operates in temperature up to 60°C
- uses standard, disposable G3 filters
- counter flow heat exchanger
- manufactured in UK to ISO 9001



COMPLIES WITH

- Part L1 2010 of Building Regulations for enhanced energy saving capability
- Part F 2010 of Building Regulations for reliable, efficient ventilation
- EU RoHS Directive Compliant.
- Conforms to requirements of EC Council directives relating to Electromagnetic Compatibility and Electrical Safety: 2006/95/CE (LVD), 2004/108/CE (EMC), EN 60335-2-80
- CE marked

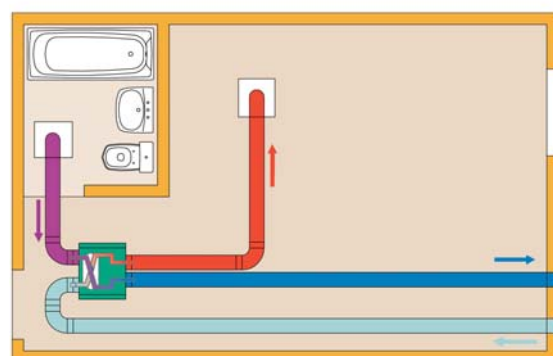
CONTROL FEATURES

Standard

- > **variable adjustment** - trickle and boost speeds set at installation for both motors independently
 - > **boost setting** - with integral overrun timer adjustable up to 20 minutes
 - > **optional delay-on-timer** - boost speed does not operate if switched off within 2 minutes
 - > **integral frost-stat** - proportionately reduces intake motor speed as temperature falls
 - > **water level sensor** - shows if condensate exit is blocked and stops unit
- #### Factory Set Options
- > **change of ductwork handing**
 - > **purge boost** - for rapid air change
 - > **BMS connections** - for remote motor shut off
 - > **integral humidistat** - proportionately increases motor speeds with rising humidity
 - > **summer bypass** - automatic bypass of heat exchanger in hot weather

MODELS AVAILABLE:

- WHHR Mini L - left drain
- WHHR Mini R - right drain
- WHHR Mini LH - humidistat, left drain
- WHHR Mini RH - humidistat, right drain
- WHHR Mini LB - bypass, left drain
- WHHR Mini RB - bypass, right drain
- WHHR Mini LBH - bypass, humidistat, left drain
- WHHR Mini RBH - bypass, humidistat, right drain



- Incoming fresh air
- Warmed fresh air
- Extracted warm, moist, stale air
- Cooled outgoing stale air
- WHHR Mini DC

Vectaire Ltd can supply all accessories for use with these units, including air filter cassettes, silencers, fire dampers, air valves, ducting, outside grilles and wall cowls. Additionally, Vectaire offers a design service to ensure that the unit installed is the best possible to provide efficient, effective, low energy and low running cost ventilation. Vectaire can also organise installation, commissioning and maintenance of these products

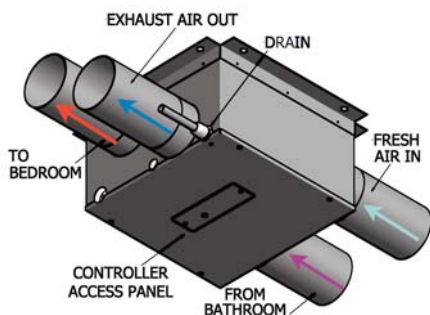


WHHR Mini DC

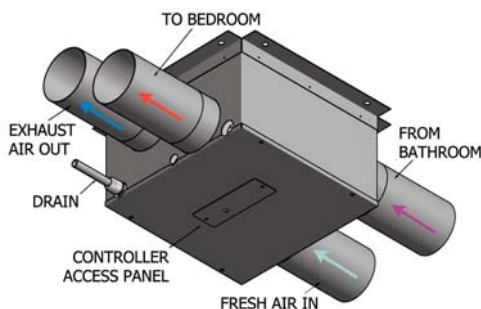
| TECHNICAL CHARACTERISTICS | | | | | | | | | | |
|---------------------------|---------------|-------------|-----|-----|-----|---------------|-------------|-----|-----|-----|
| Model | Airflow l/sec | | | | | Power - Watts | | | | |
| | maxboost | max trickle | 80% | 60% | 40% | max boost | max trickle | 80% | 60% | 40% |
| WHHR Mini DC | 34 | 32 | 28 | 18 | 12 | 80 | 68 | 46 | 24 | 15 |

| WHHR Mini DC | | Sound Power Levels, L_w (dB) - Octave Bands Frequency Hz. | | | | | | | | Sound Pressure dBA @3m |
|---------------------------|----------|---|-----|-----|-----|----|----|----|----|------------------------|
| Curve Ref | | 63 | 125 | 250 | 500 | 1k | 2k | 4k | 8k | |
| Max Boost (34 l/sec) | Extract | 65 | 58 | 61 | 63 | 55 | 46 | 36 | 27 | 37 |
| | Supply | 66 | 64 | 70 | 73 | 67 | 64 | 55 | 45 | |
| | Breakout | 73 | 59 | 62 | 58 | 49 | 35 | 32 | 24 | |
| Max Trickle (32 l/sec) | Extract | 64 | 56 | 60 | 62 | 54 | 45 | 35 | 26 | 36 |
| | Supply | 65 | 63 | 69 | 72 | 66 | 63 | 54 | 44 | |
| | Breakout | 72 | 58 | 61 | 57 | 48 | 34 | 31 | 23 | |
| 80% (28 l/sec) | Extract | 54 | 54 | 59 | 54 | 45 | 34 | 24 | 22 | 30 |
| | Supply | 55 | 57 | 65 | 62 | 56 | 51 | 42 | 31 | |
| | Breakout | 62 | 53 | 57 | 48 | 39 | 31 | 21 | 21 | |
| 60% (18 l/sec) | Extract | 46 | 50 | 53 | 45 | 37 | 26 | 20 | 21 | 24 |
| | Supply | 50 | 55 | 58 | 48 | 47 | 42 | 33 | 26 | |
| | Breakout | 56 | 51 | 50 | 41 | 31 | 23 | 18 | 20 | |
| 40% (12 l/sec) | Extract | 39 | 46 | 47 | 39 | 29 | 19 | 15 | 21 | 18 |
| | Supply | 45 | 54 | 51 | 47 | 39 | 34 | 23 | 21 | |
| | Breakout | 49 | 49 | 44 | 34 | 23 | 16 | 16 | 20 | |

WHHR MINI DC OPTION 1 (RIGHT HAND DRAIN)



WHHR MINI DC OPTION 2 (LEFT HAND DRAIN)



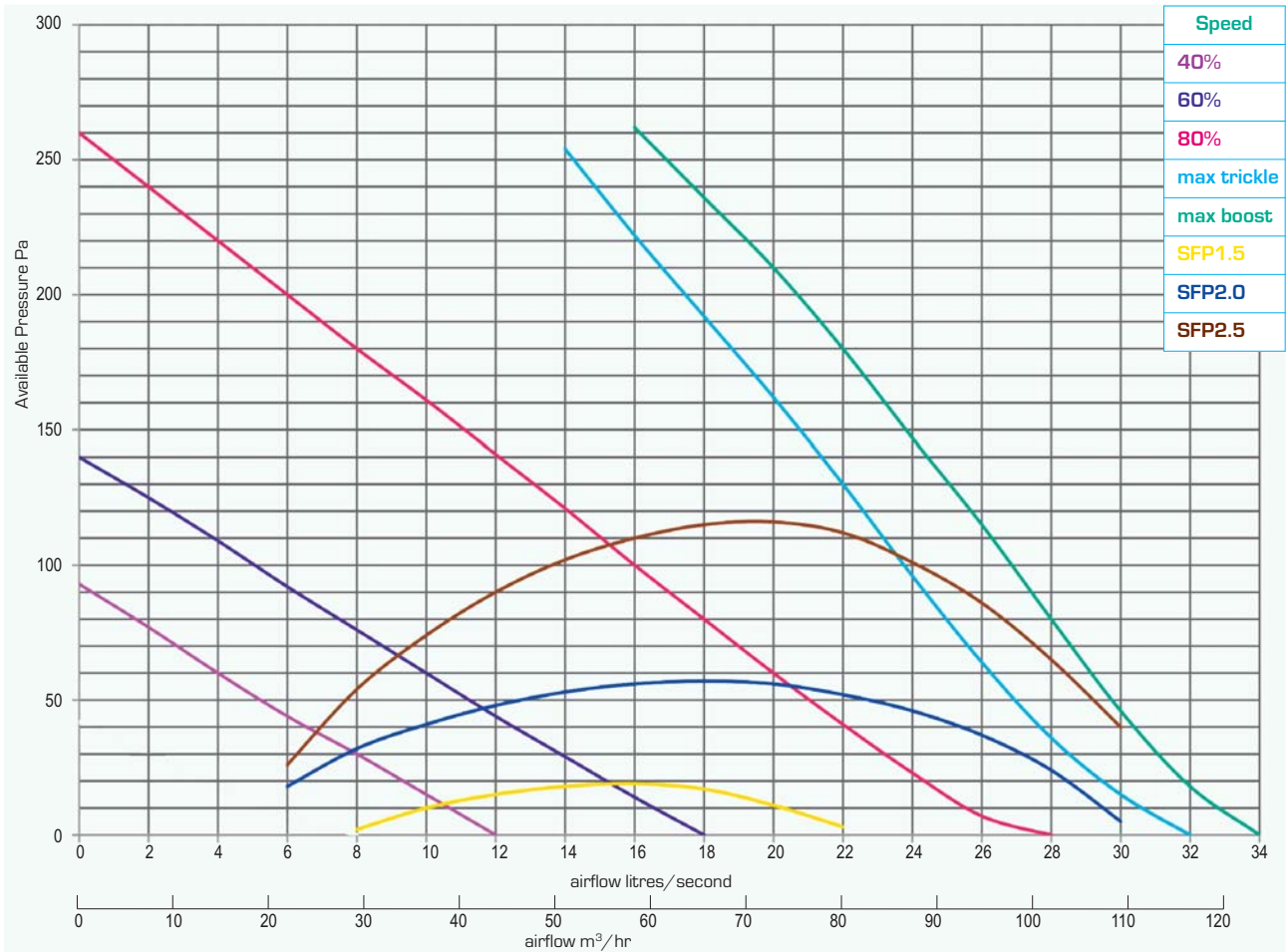
TYPICAL SPECIFICATION

Supply and install a Vectaire WHHR Mini DC energy efficient MVHR as manufactured by Vectaire Ltd, Lincoln Road, Cressex Business Park, High Wycombe, Bucks, HP12 3RH. The unit is to give low level, continuous ventilation to a kitchen and one other wet room. The unit should be for loft or void installation and recover up to 92% of heat from extracted air separating the airflows using a counter flow heat exchanger. The unit should incorporate a low energy EC motor with sealed for life bearings for low noise levels and low energy consumption, and have as standard: variable adjustment; boost setting with integral overrun timer; optional delay-on timer; integral frost-stat; and a water level sensor. It should also have the facility for: change of ductwork handing; purge boost; BMS connections; integral proportional dynamic humidistat; and an automatic summer bypass. The unit should be capable of being fitted to 125mm dia ducting without the need for adaptors, have EPS lining for low noise levels and low heat loss. The unit should comply with Part L1 2010 and Part F 2010 of Building Regulations, be EU RoHS Directive Compliant, conform to the requirements of EC Council directives relating to Electromagnetic Compatibility and Electrical Safety: 2006/95/CE (LVD), 2004/108/CE (EMC), EN 60335-2-80 and be CE marked.



WHHR Mini DC

PERFORMANCE (curves are for guidance only)



DIMENSIONS - mm (bottom access only)

