



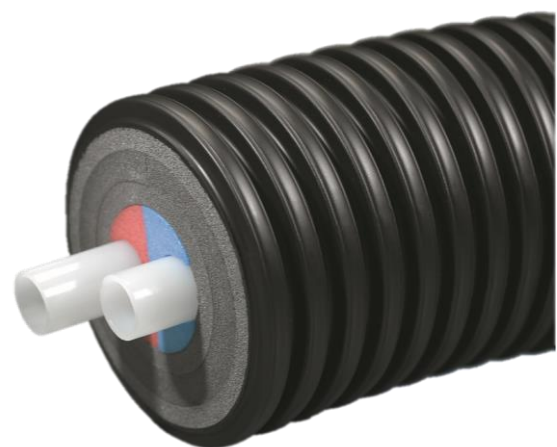
Uponor product specification

Uponor product range: Thermo Twin and Single

Uponor product code(s): 1018109 - 1018116, 1083868, 1018134 - 1018138

Product specification:

Pipe insulation material:	PEX Foam
Pipe jacket material:	PE-HD jacket
Fire Classification	Class E
Pipe Material	PE-Xa with EVOH barrier
standards:	DIN 16892/16893, BS EN 15632-3 ATV-DVWK-A 127
Max flow Temp:	95°C @ 6 bar (100 hours)
Max continuous flow Temp:	80°C @ 6 bar



Product details:

Application:

The ideal solution for distributing heating water in local heat supply networks, or for connecting building complexes and single houses. The Thermo Twin version also combines flow and return lines in a flexible pipe system. The dog bone structure helps identify the pipes at the plantroom.

The classification of the Thermo pipe system is described in BS EN 15632-3 as a non bonded system with a plastic medium pipe.

Pipe construction:

Uponor Thermo is a multi-layer pre-insulated pipework, consisting of a multiple layers of PEX foam insulation for added flexibility and on twin pipeworks a split colour foam to help in identification of pipe services each end. The core pipework contained is a SDR11 (6 BAR) EVOH diffusion barrier pipe ideal for use in Heating systems. This pipe conforms to BS EN 15632-3 (un-bonded plastic pipework).



Pipe Properties

Thermo Single

Code:	Pipe (mm)	Jacket (mm)	DN number	Pipe weight (kg/m)	Water Volume (l/m)	Bend radii (m)	Coil length (m)	U-value
1018109	25x2.3	140	DN20	1.1	0.327	0.25	200	0.148
1018110	32x2.9	140	DN25	1.2	0.539	0.3	200	0.174
1018111	40x3.7	175	DN32	2.2	0.835	0.35	200	0.172
1018112	50x4.6	175	DN40	2.43	1.307	0.45	200	0.203
1018113	63x5.8	175	DN50	2.73	2.075	0.55	200	0.249
1018114	75x6.8	200	DN63	3.74	2.961	0.8	100	0.257
1018115	90 x8.2	200	DN80	4.2	4.254	1.1	100	0.315
1018116	110x10	200	DN100	5.24	6.362	1.2	100	0.421
1083868	125x11.4	250	DN125	7.3	8.203	1.4	80	0.378

Thermo Twin

Code:	Pipe (mm)	Jacket (mm)	DN number	Pipe weight (kg/m)	Water Volume (l/m)	Bend radii (m)	Coil length (m)	U-value
1018134	(2x) 25x2.3	175	2x DN20	2.09	0.327	0.5	200	0.201
1018135	(2x) 32x2.9	175	2x DN25	2.16	0.539	0.6	200	0.241
1018136	(2x) 40x3.7	175	2x DN32	2.5	0.835	0.8	200	0.293
1018137	(2x) 50x4.6	200	2x DN40	3.59	1.307	1.0	100	0.314
1018138	(2x) 63x5.8	200	2x DN50	4.49	2.075	1.2	100	0.42