

Xtratherm[®]
More than insulation

Fire Performance

Thermal Conductivity

Extensive Range

Superior Performance Insulation

AS LOW AS
X020
Xtratherm

Soffit

SR/STP

Insulation Composite for
Structural Ceiling Applications

Key Features

Superior Performance Phenolic

Non-Combustible Impact
Resistant Facing Board

Thermal Conductivity
as low as 0.020W/mK

Class 'O'/Low Risk Fire Rating

Low Smoke Obscuration

Eliminates Cold Bridging

HCFC/CFC Free



www.xtratherm.com

Safe-R

Superior performance phenolic insulation

Safe-R | SR Soffit Plus Board

Xtratherm Safe-R Soffit Plus Board SR/STP is a superior performance rigid insulation composite that provides effective thermal and fire protection solutions in structural ceiling applications in commercial and residential buildings. The Class 'O' phenolic foam core board with enhanced fire performance and negligible smoke obscuration is bonded to impact resistant 6mm building panel offering a secure finish for ease of maintenance that accepts decorated finish. Soffit Plus has a thermal conductivity as low as 0.020W/mK.

Efficient Insulation with Durable Facing

Using Xtratherm Safe-R Soffit Plus SR/STP on soffit areas, whether new build or refurbishment situations can provide the most efficient U-values with minimal thickness of insulation. The product achieves a thermal conductivity as low as 0.020W/mK and addresses the stringent safety requirements with a Class O fire rated insulation core and negligible smoke obscuration.

The bonded facing of non combustible medium density building panel is water and impact resistant providing a durable protection to which a decorative finish may be applied.

Xtratherm SR/STP can be fixed directly to the concrete slab, onto battens or used with proprietary fixing systems to provide an even surface. The lightweight rigid products is convenient to handle and allows for fast and easy fixing.

Soffit plus can be fixed directly to the concrete slab or to treated timber battening. Approved fixings should be used and installed in accordance with manufacturer's instructions and fitting pattern. Typically 12 steel fixings, min shank diameter of 5.2 mm and head (or washer) diameter of 25 mm, is used on a standard 86 mm board, uniformly spaced at max 600mm across and 800mm along the board 50 mm in from the edge. For specific suction pressures the fixing arrangement should be determined by manufacturers design. In situations where fire performance is a consideration, all-steel fasteners should be used. Account should be taken of any thermal bridging through the fixings as should the effect of any floor supporting beams. Fixing manufacturers: Ejot DDS 7.3 concrete anchor (steel fixings) or Fischer Hammerset DIPK 10mm (plastic fixings).



Property & Units

Density (Foam Core)
45 (Kg/m³)

Compressive Strength
>125 (kPa)

Water Vapour Resistivity
>100 (MNs/gm)

Thermal Conductivity
0.020 (W/mK)

Service Temperature
-20 to +100 (°C)

Xtratherm SR/STP

Length (mm)
2400

Width (mm)
1200

Thickness (mm)
80, 100

Xtratherm Safe-R

Typical R-values

80mm
R-value: 3.810

100mm
R-value: 5.000

Specification Clause

The soffit insulation shall be Xtratherm Safe-R SR/STP ___mm manufactured to BS EN 13166:2008 by Xtratherm, comprising a CFC/HCFC free rigid Phenolic core bonded to 6mm building panel. To be installed in accordance with instructions issued by Xtratherm. Refer to NBS clause P10 42, P10 217.

Typical U-values

Xtratherm SR/STP Thickness (mm)		
Solid Concrete		
	86	106
200	0.23	0.19

Thickness includes 6mm building panel

Standards

Xtratherm Safe-R range is manufactured to EN ISO 13166 under Quality Systems approved to EN ISO 9001:2008 Quality Management, EN ISO 14001:2004 Environmental Management and BS OHSAS 18001 Health and Safety Management System.

Storage

Xtratherm Safe-R should be stored off the ground, on a clean, flat surface and must be stored under cover. The polythene wrapping is not considered adequate protection for outside exposure.

Cutting

Xtratherm Safe-R can be readily cut using a sharp knife or fine toothed saw. Ensure tight fitting of the insulation boards to achieve continuity of insulation as asked for in accredited details.

Work Interruptions

During breaks in the build process and at the end of each working day, board edges and joints should be protected from inclement weather. Boards that have been allowed to get wet should not be used.

Packaging

Xtratherm Safe-R is wrapped in polythene packs and each pack is labelled with details of grade/type, size and number of pieces per pack. The packaging should not be considered as protection from the elements.

Availability

Xtratherm products are available through builder's merchants and specialist distributors throughout the UK and Ireland. For the location of your nearest stockist please contact Xtratherm.

Environmental

Xtratherm Safe-R is manufactured under ISO 14001:2004 Environmental Management with all major components sourced under 14001 accredited suppliers. It is manufactured without the use of CFC's or HCFC's and has Zero Ozone Depletion Potential with a GWP of less than 5.

Durability

Xtratherm Safe-R products are stable, rot proof and will remain effective for the life span of the building, dependent on specification and installation. Care should be taken to avoid contact with acids, petrol, alkalis and mineral oil, when contact is made, clean materials in a safe manner before installation. Solvent based adhesive containing methyl ethyl ketone, should not be used.

Installation Guidelines



Directly to Concrete

Ensure cavity wall insulation has continued past the soffit insulation to avoid thermal bridging.

Fix Xtratherm SR/STP insulation stagger jointed onto the soffit ensuring all joints are supported.

Ensure boards are tightly butted.

Ensure approved fixings are used penetrating the soffit by a minimum of 40mm.

Generally 12 fixings per board are required.

Refer to manufacturer's instructions.

Fixings should have a head diameter of at least 35mm.

Boards joints can be covered with a suitable cover strip.



Fixing to Timber Battens/ Proprietary Systems

Timber battens may be used to provide an even surface when direct fixing to the soffit is not possible.

Timber battens min 50mm x 40mm should be placed at minimum 600mm centres.

Battens should be timber treated and enough time allowed to dry out.

Fix SR/STP to the timber battens using approved fixings at max 300mm centres, 10mm in from the edge of the boards.

When using proprietary metal grid systems refer to manufacturer for fixing instructions.

Boards joints can be covered with a suitable cover strip.

Xtratherm Technical Services

All the members of our technical team are individually BBA accredited to help you reach your low energy goals. BBA qualified in U-value calculation, condensation risk and also Thermal Bridging 3D analysis backed by BRE accreditation – when you call Xtratherm, you can be assured you're speaking to a qualified person.



SR/CW

Walls

Insulation for
Partial Fill Cavity Wall



SR/RS

Rainscreen

Insulation for
Rainscreen Application



SR/TB

Walls

Insulation for
Drylining Walls
Dot & Dab



SR/PR

Roofs

Insulation for
Pitched Roofs



SR/TB-MF

Walls

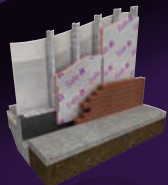
Insulation for
Drylining Walls Mechanically
Fixed to Battens



SR/STP

Soffit Plus

Insulation Composite for
Structural Ceiling Applications



SR/FB

Walls

Insulation for
Steel & Timber Framing



SR/UF

Floors

Insulation for
Ground Supported and
Suspended Floors

Rigid Insulation Flexible Solutions

Xtratherm UK Limited
Park Road Holmewood
Chesterfield Derbyshire
S42 5UY

Tel
+ 44 (0) 371 222 1033
Fax
+ 44 (0) 371 222 1044

Contact
info@xtratherm.com

www.xtratherm.com

Good workmanship and appropriate site procedures are necessary to achieve expected thermal and airtightness performance. The example calculations are indicative only. Default values for components and cavities have been used, for specific U-value calculations contact Xtratherm Technical Support. Comprehensive guidance on installation should be consulted. Xtratherm technical literature and Agrément certification is available for download on the Xtratherm website. The information contained in this publication is, to the best of our knowledge, true and accurate but any recommendations or suggestions which may be made are without guarantee since the conditions of use are beyond our control.