


5-IN-1 MOULDING

PERGO®
WOOD PARQUET

Order code	Photo	Dimensions	Pack quantities
PGWINCP(-)MD215		2150 x 16 x 54 mm	1 (knife + rail included)

Product description

The moulding with Incizo® technology provides a simple solution for a perfect finish to your Pergo® floor. You can create any moulding imaginable with the knife supplied: T-moulding, carpet transition moulding, hard surface reducer and also an end moulding. Furthermore the 5-in-1 moulding can also be used to finish your stairs.

The 5-in-1 moulding provides a handy and economic solution.

Contents: 5-in-1 moulding, multifunctional rail and handy knife.

Applications

Wood is the main component of your Pergo® floor. Room humidity may vary from season to season, so it is vital that the floor is able to expand and contract. The floor must be able to expand and contract on all sides. This is why an expansion gap of at least 15 mm must be provided around the floor. The Pergo® 5-in-1 moulding can be used to finish this gap. Pergo® also has a wide range of skirting boards for the perfect finish for the expansion gap (against a wall). (You can find more information about our Pergo® skirting boards at www.pergo.com).

The Pergo® 5-in-1 moulding can be used in 5 different applications.

√ T - moulding

The Pergo® T-moulding is used to join two floors in: doorways, door openings, L-shaped rooms or rooms where the floor is greater in distance than 12 m in length or width.



√ Carpet transition (adaptor profile)

The Pergo® transition profile can be used to cover the transition to a fixed carpet, for example.



√ Hard surface reducer (adaptor profile)

The Pergo® adaptor moulding ensures a smooth transition from a Pergo® floor and an alternative floor covering at a

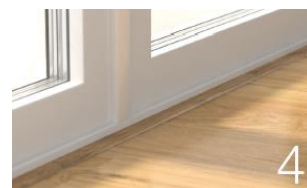


5-IN-1 MOULDING

lower height, like tiles, vinyl or parquet.

√ End moulding

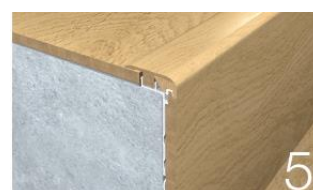
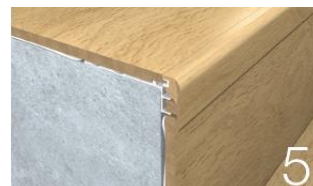
The Pergo® end moulding is used to finish the edge of a floor against a vertical surface such as sliding doors, low open windows, a slightly higher doorstep or tiled floor.



√ To finish your stair

You can also cover your stairs or steps with Pergo® planks, in combination with the Incizo profile as a stair nose. In this case, an aluminium subprofile for application on stairs is needed, to be ordered separately.

Please refer to the sales sheet of the Incizo stairs to learn more about installation as a stair profile.

**Specifications**

√ Excellent wear and scratch-resistant laminate surface

The durable AC5 laminate makes the Pergo® 5-in1 moulding with incizo® technology resistant to scratches and wear.

√ No inconvenient seams compared against other multifunctional profiles

√ Watertight glued HDF base

The main component of the Pergo® 5-in-1 moulding is wood. The HDF base is resistant to dampness, which ensures your profile remains in perfect condition.

√ Multifunctional rail.

The rail supplied can also be used in installations with considerable height differences, by bending the lip.

√ Matching accessories

The Pergo® 5-in-1 moulding profile is available in a design and surface structure that matches your floor perfectly.

√ Warranty:

The Pergo® 5-in-1 moulding is very high quality. **The warranty on your Pergo® floor also applies for these Pergo® mouldings.**

√ Economical

You can use the profile leftovers in other applications, so there is less waste.

√ Easy

Another added benefit of this multifunctional profile is that you always have the right solution on hand.

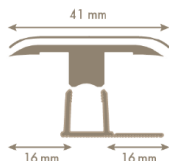
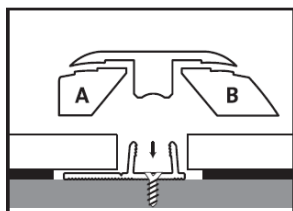
√ Complete package

The rail and the knife are supplied together with the multifunctional profile.

5-IN-1 MOULDING

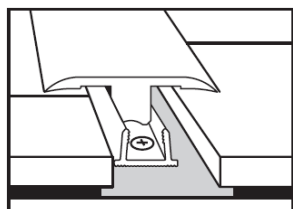
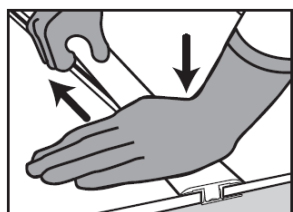
Instructions for use

√ T-moulding



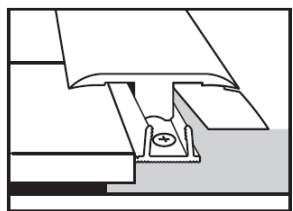
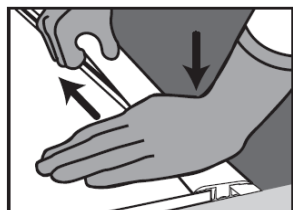
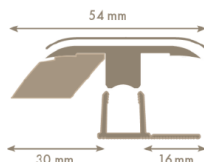
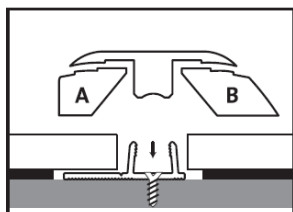
Saw the profile to the right length. Cut away section A and section B with the knife to make the expansion profile.

Note: cut both lengths first and then remove both blocks.



Make sure you leave enough room between the two surfaces that link the profile when installing the floor. Take into account the expansion joint between the protruding legs of the rail (where the profile will go) and the floor. Saw the plastic rail to the right length and place it centrally on the base in the open space between the two floor surfaces. The rail can be attached in different ways: see further. Press the profile gently from one side to the other into the rail. Press until it is against the floor.

√ Carpet transition / hard surface reducer

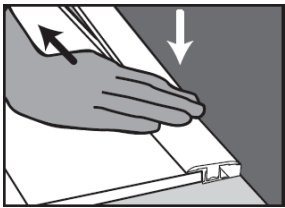
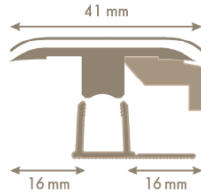
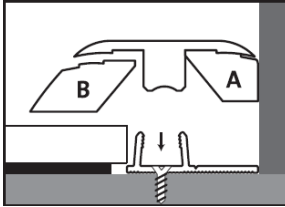


First saw the profile to the right length. Cut section A away with the knife to make an adapter profile.

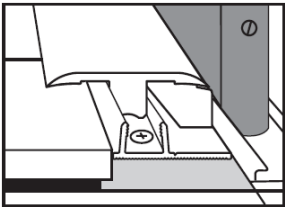
Mark on the base where you want the Pergo® floor to go. Let the base continue to just before this line: it is better to place the rail (in which the adapter profile will be clamped) on the base later. Make sure that you lay the Pergo® floor a sufficient distance away from the edge of the underlay: take into account the expansion joint between the protruding legs of the rail (where the profile will go) and the floor. Attach the plastic rail to the base, with the long lip in the direction of the floor. This can be done in various ways: see further. Press the profile gently from one side to the other in the rail. Press until it is against the floor.

5-IN-1 MOULDING

√ End moulding



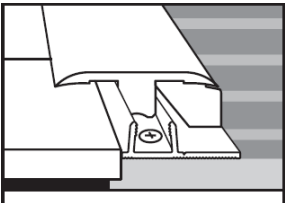
First saw the profile to the right length. Cut section B away with the knife to make an edge profile.



Installing against a vertical surface:

Saw the plastic rail to the right length and place it with the lip against the vertical surface, on the base. The lip acts as a distance-holder. Attaching the rail: see further. Make sure there is a sufficient expansion joint between the floor and the legs of the rail in which the profile will be clamped.

Press the profile gently from one side to the other in the rail. Press until it is against the floor;

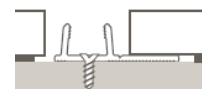


Installing against a vertical surface:

Identical to the installing of the adapter profile.

√ Installation of the multifunctional rail

- Normal installation:



- Installation with considerable height differences
For installing floors thicker than 9mm, e.g. Pergo® 950 Uniclic® floors. Break off the long lip from the rail at the groove, across the whole length of the rail. Place the broken off piece under the rail to make up for the height difference with the floor. Attach both pieces firmly to the ground.



5-IN-1 MOULDING

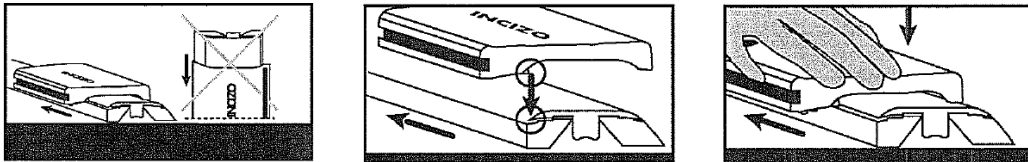
√ How to attach?

- With screws:
The rail can be attached to the base with screws. Use the pre-drilled holes between the legs of the rail for this. Be careful of underground pipes.
- With Pergo® Multiglue:
All rails can be attached firmly to the base with this extra-strong glue. You do not need to worry about underground pipes as you do when using screws. This glue also has a very high initial bonding strength which means the 5-in-1 moulding can easily be pressed into the rail immediately.



√ Using the knife

BE CAREFUL: the edges of the cut profile and the knife are sharp, always wear gloves.



Always place the profile horizontally on a stable base when cutting.

Place the slit at the top of the profile so that the knife below the slit goes in the narrow opening on the head of the profile.

When cutting the slit, always keep the profile pressed level and pull it over the profile in the direction of the arrow.