

User Guide

ZXT315 MANAGER'S DISPLAY PANEL



Tynetec operates a policy of continual product improvement and reserves the right to modify the specification of its products.

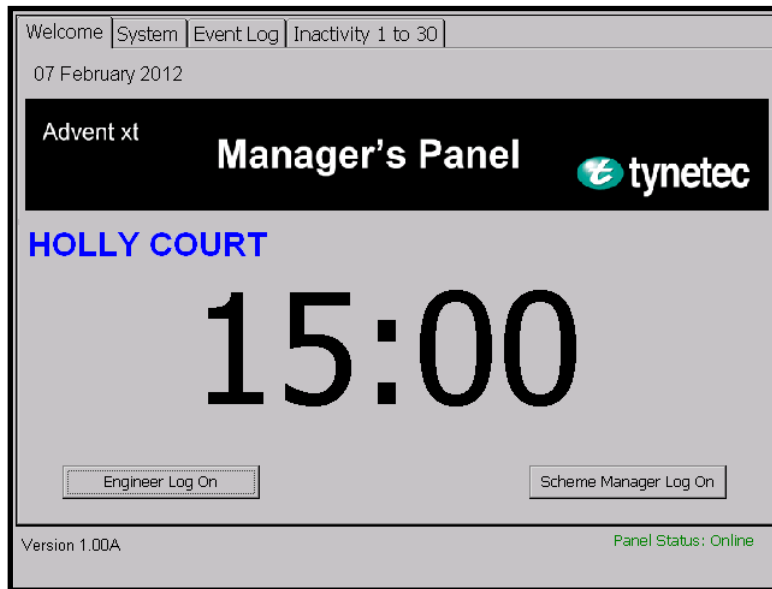
If any variation to the details in this document are suspected please contact Tynetec's Technical Support on 01670 352371.

INDEX

Section	Topic	Page
1	Welcome Screen	3
2	System Screen	4
3	Event Log	5
4	Inactivity Status	6
4.1	Intercom Privacy Status	7
4.2	I'm OK Status	8
4.3	Handset Privacy Status	9
5	Scheme Manager Log On	10
5.1	Add a Radio Device	11
5.2	Remove a Radio Device	12
5.3	Change Password	13
6	Engineer Log On	14
6.1	Change Flat Labels	15
6.2	Change Telephone Numbers	16
6.3	Change Site Name	17
6.4	Close the Application	17
6.5	Calibrate the Touchscreen	18
7	Memory Card Management	18
7.1	Archiving Memory Card Data	18
7.2	Formatting the Memory Card	19
8	Specification	20

1. WELCOME SCREEN

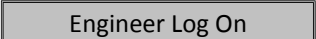
A few seconds after power-up the Welcome screen will be displayed;



Panel Status: Online will be displayed when connection is made to the Advent xt system

The **Time and Date** is set from the Advent xt system

The building name e.g. **HOLLY COURT** can be setup in the Engineers utility

Touch the  button to select the Engineers utility - see section 6

Touch the  button to select the Scheme Managers utility - see section 5

Touch the tabs along the top of the screen to select;

System – displays the current system status - see section 2

Event Log – displays the history of events for a chosen date - see section 3

Inactivity 1 to 30 † – displays the activity status of all flats - see section 4

Intercom Privacy 1 to 30 † – displays the privacy status of all warden call intercoms - see section 4.1

I'm OK 1 to 30 † – displays the I'm OK status of all flats - see section 4.2

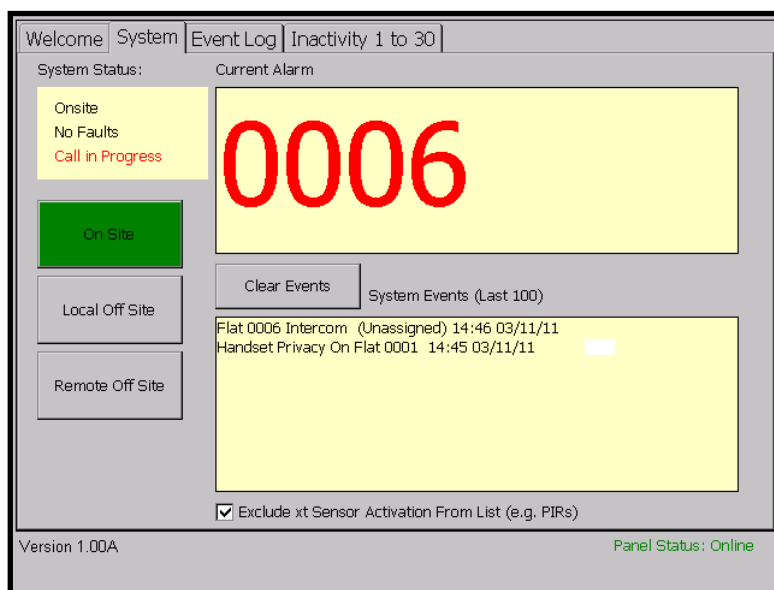
Handset Privacy 1 to 30 † – displays the privacy status of all door entry telephones - see section 4.3



† Any one of these 4 tabs may be shown (depending on which was viewed last) and the number range (e.g. 1 to 30) will correspond with the number of flats in your scheme

2. SYSTEM SCREEN

Touch the System tab and the screen will display;



The **System Status**: window will display the current operating mode as; Onsite, Local Offsite or Remote Offsite, if there's any Faults on the system and if there's a Call in Progress

The **Current Alarm** window will display the **Call in Progress** in large red digits e.g. **0006**

If the call is from a zoned pendant, the residents flat and zone will be displayed e.g. **0006 Z02**

3 buttons are used to select the operating mode; the current mode will be green e.g.



Touch the  or  buttons to change the operating mode

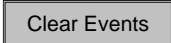
You will be prompted for a **Password** to change the operating mode;

Enter the password (default **1234**) then touch  (to change the password see section 5)

The **System Events** list will show the last 100 events, use the slider bar to scroll up/down the list

Set the check box to prevent Telecare sensor activity filling up the **System Events** list

Clear the check box to allow Telecare sensor activity in the **System Events** list

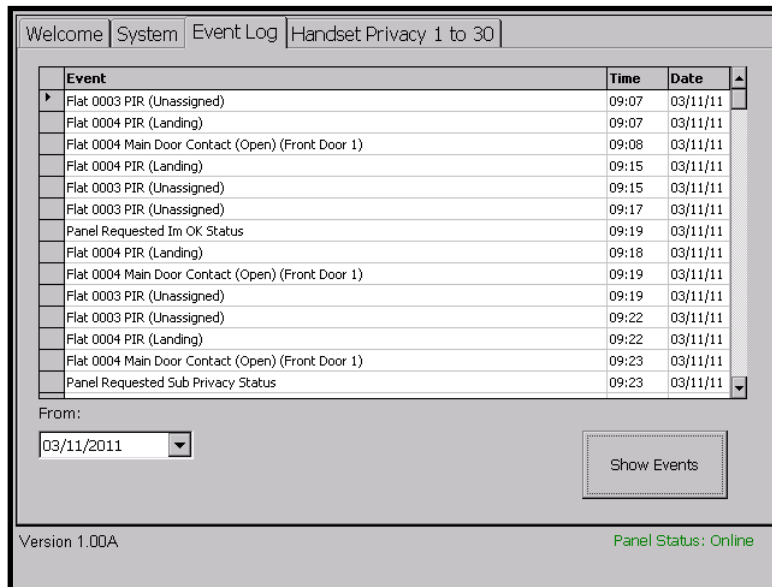
Touch the  button to clear the **System Events** list




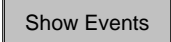
*You cannot change the operating mode if there is a Call in Progress
Clearing the System Event list does not clear the Event Log*

3. EVENT LOG

Touch the Event Log tab and the screen will display;



Touch the  button on the **From:** date box and a calendar window will open

Select a year, month and day from the calendar window then touch the  button

All events for the chosen day will be listed

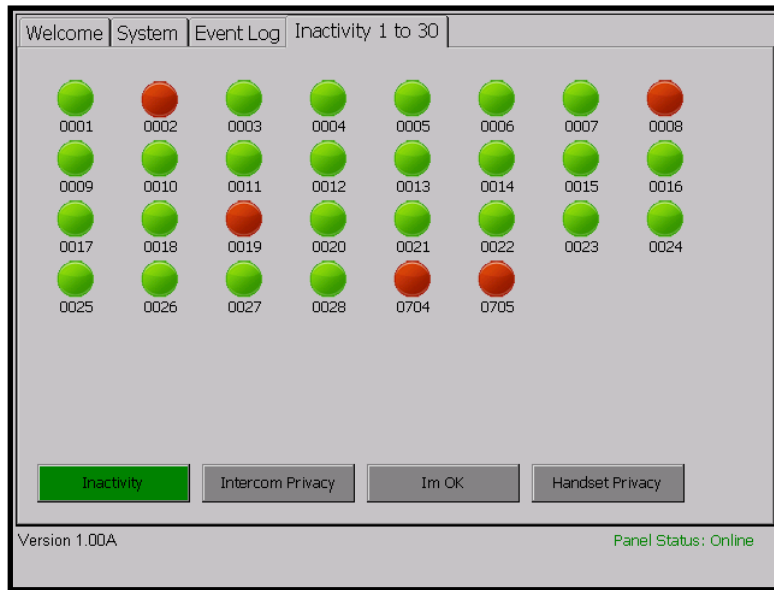
Use the slider bar to scroll up/down the list



Events are listed in time order - the first event of the day is at the top of the list

4. INACTIVITY STATUS

Touch the Inactivity tab and the screen will display;



This shows the flats where the residents are “up and about” each day
Up to 3 activity monitoring periods can be set to repeat each day

A red spot ● = **NO ACTIVITY**

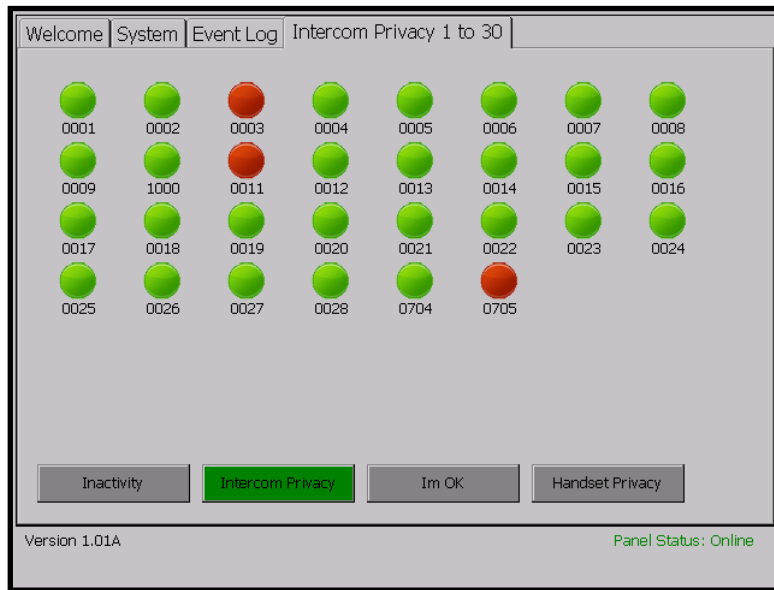
A green spot ● = **ACTIVITY**



Refer to the Advent xt user guide for instructions on how to setup activity monitoring

4.1 INTERCOM PRIVACY STATUS

Touch the  button and the screen will display;



This shows which flats have privacy mode selected on the Advent xt intercom

A red spot ● = **PRIVACY ON**

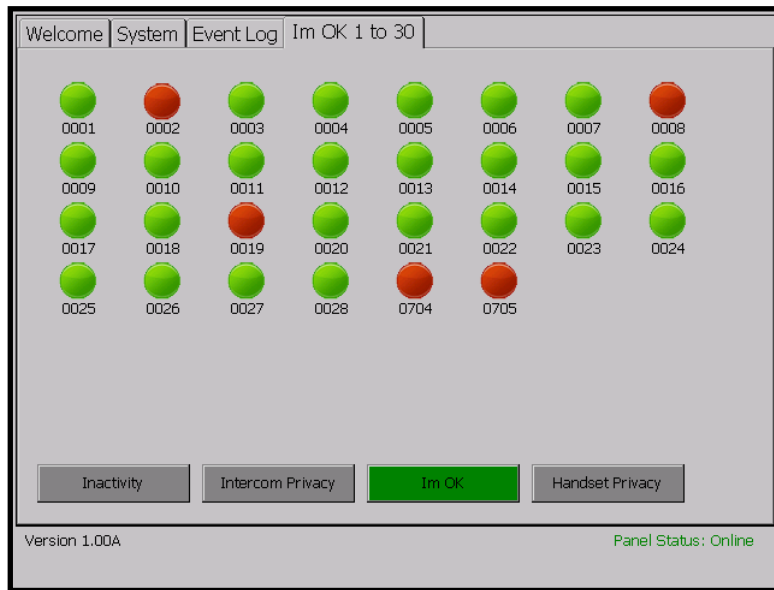
A green spot ● = **NORMAL** (privacy off)



When intercom privacy is on the resident can hear you but you cannot hear them

4.2 I'M OK STATUS

Touch the  button and the screen will display;



This shows which flats have responded "I'm OK" each day

A red spot ● = **NO RESPONSE** (not OK)

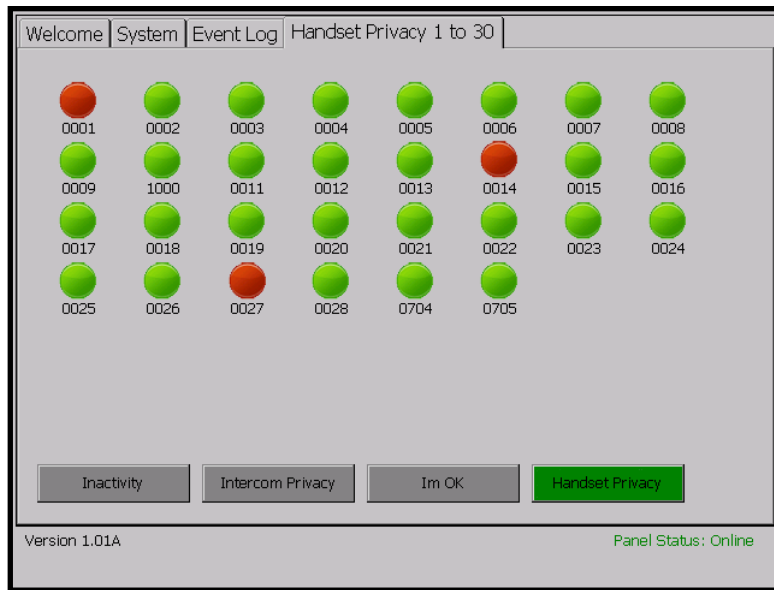
A green spot ● = **I'M OK**



Refer to the Advent xt user guide for instructions on how to setup the I'm OK feature

4.3 HANDSET PRIVACY STATUS

Touch the  button and the screen will display;



This shows which flats have privacy mode selected on the door entry telephone handsets

A red spot ● = **PRIVACY ON**

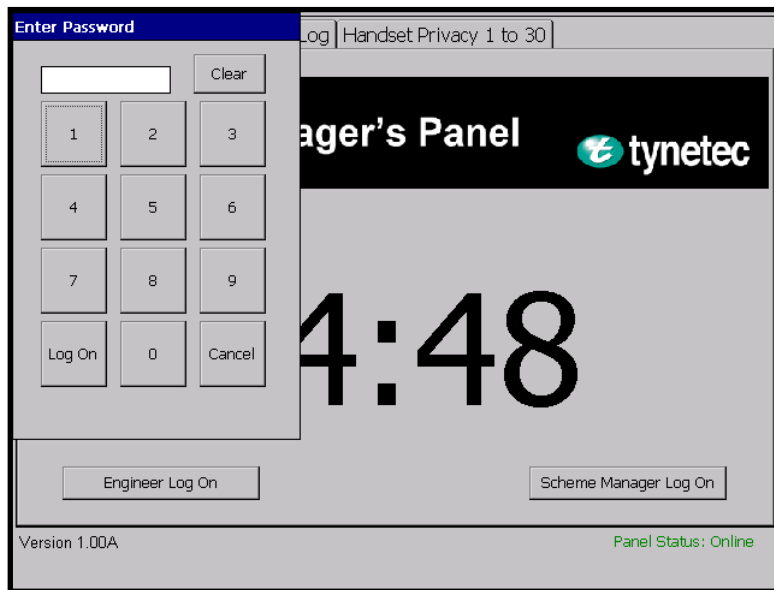
A green spot ● = **NORMAL** (privacy off)



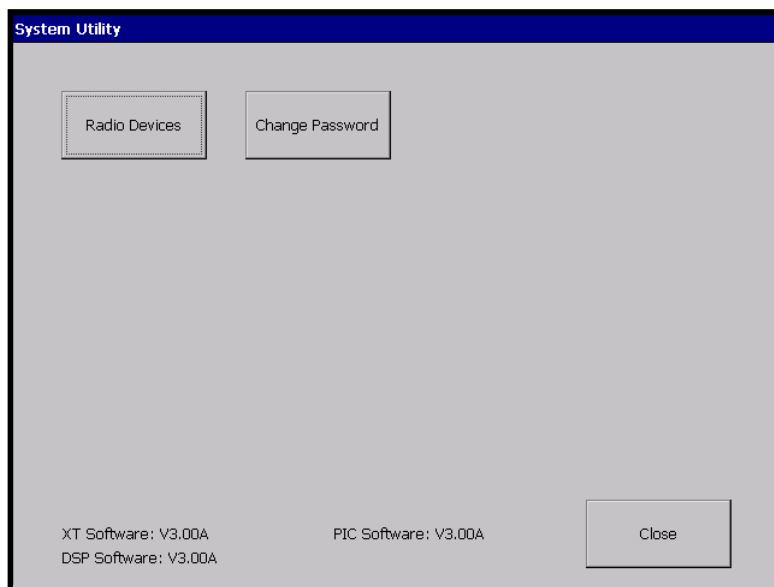
*If a flat has 2 door entry handsets both must be in privacy to show on screen as privacy mode
When handset privacy is on the resident will not get calls from visitors at the entrance door*

5. SCHEME MANAGER LOG ON

From the Welcome screen touch the **Scheme Manager Log On** button and the screen will display;



Enter the password (default **1234**) then touch **Log On** and the screen will display;



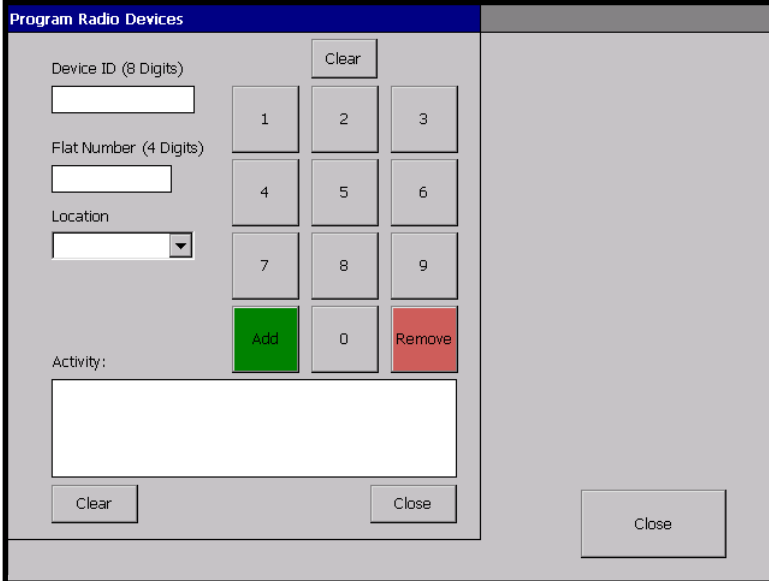
See section 5.1 to add a Radio Device

See section 5.2 to remove a Radio Device

See section 5.3 to Change Password

5.1 ADD A RADIO DEVICE

From the System Utility screen touch the  button and the screen will display;




Enter the 8 digit device ID taken from the label of the radio device in the **Device ID** box

Enter the flat number the radio device is being allocated to in the **Flat Number** box

Select where the radio device is being located from the **Location** pull down list box

Touch the  button

Check the correct radio device details are displayed in the **Activity** window

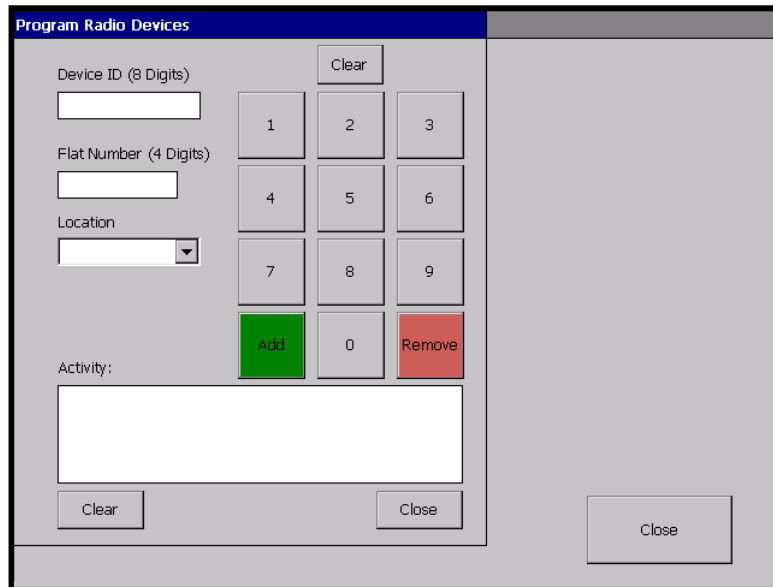
Touch the  button to exit



Install the Radio Device and perform a test call to check its operation and ID


5.2 REMOVE A RADIO DEVICE

From the System Utility screen touch the  button and the screen will display;

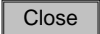


Enter the 8 digit device ID taken from the label of the radio device in the **Device ID** box


Enter the flat number the radio device is being removed from in the **Flat Number** box

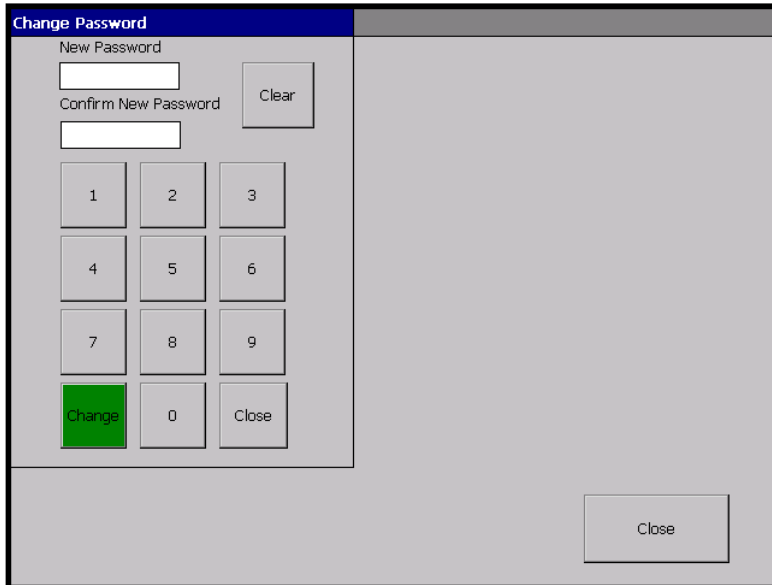
Touch the  button

Check the correct “Deleted ID” details are displayed in the **Activity** window

Touch the  button to exit

5.3 CHANGE PASSWORD

From the System Utility screen touch the  button and the screen will display;



The screenshot shows a 'Change Password' dialog box. It has a title bar 'Change Password' and a 'Clear' button. Below the title bar are two input fields: 'New Password' and 'Confirm New Password'. Below these fields is a numeric keypad with buttons for digits 1-9, 0, and a 'Change' button (highlighted in green). There is also a 'Close' button at the bottom right of the dialog box.

Enter a new 4 digit password in the **New Password** box

Re-enter the same new 4 digit password in the **Confirm New Password** box

Touch the  button

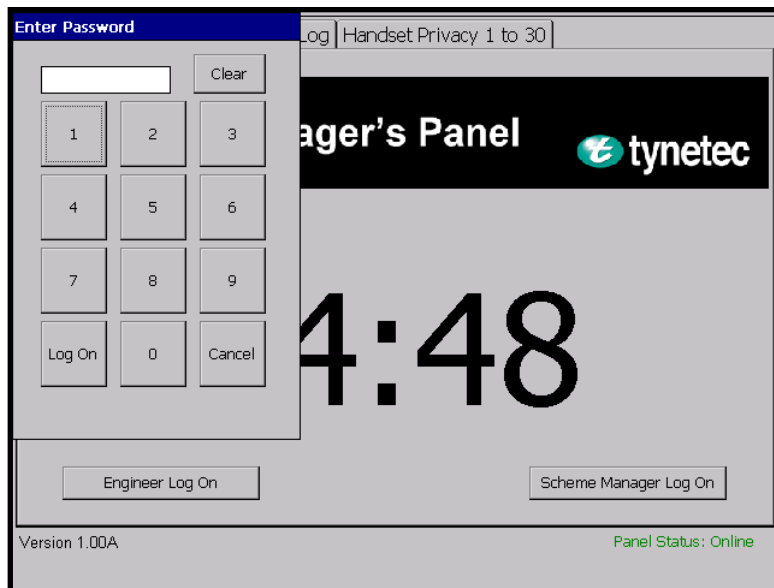
Touch the  button to exit




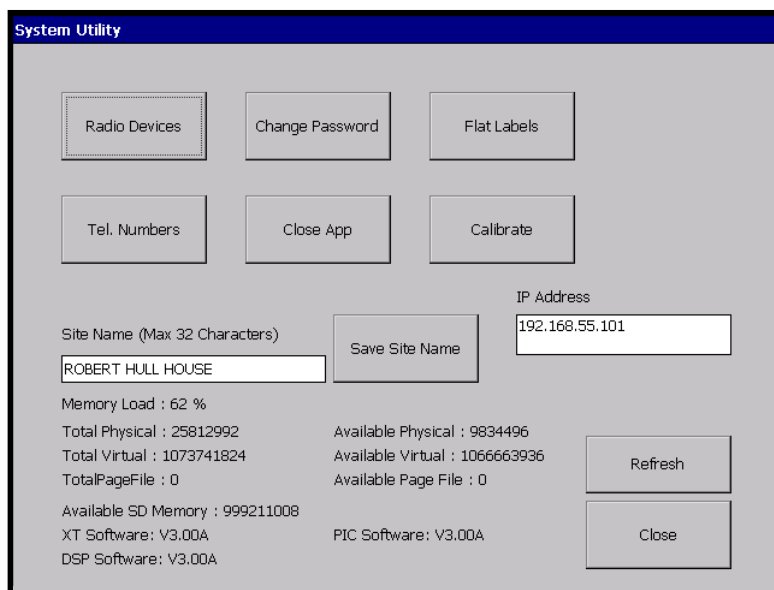
*If you Log On as a Scheme Manager this function will change the Scheme Manager Password
If you Log On as an Engineer this function will change the Engineer Password*

6. ENGINEER LOG ON

From the Welcome screen touch the  button and the screen will display;



Enter the Engineers password (default **2371**) then touch  and the screen will display;



See section 5.1 to Add a Radio Device

See section 5.2 to Remove a Radio Device

See section 5.3 to Change Password

See section 6.1 to Change Flat Labels

See section 6.2 to Change Telephone Numbers

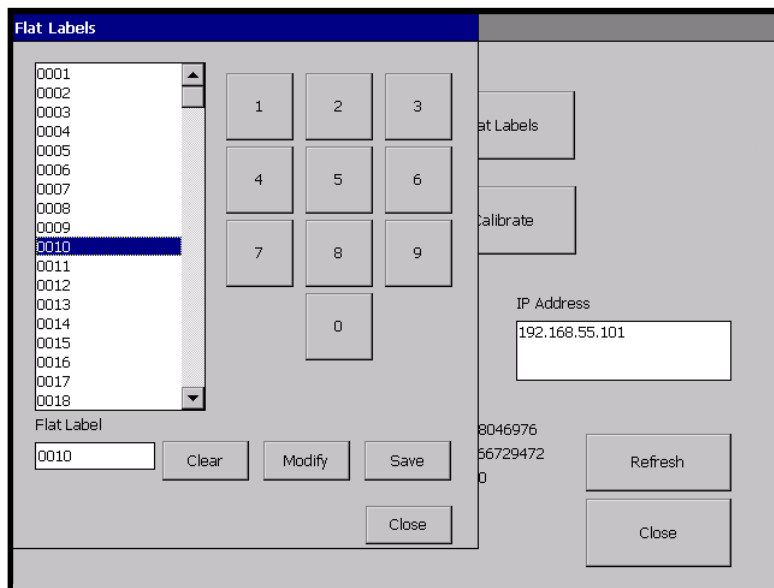
See section 6.3 to Change Site Name

See section 6.4 to Close the Application

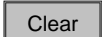
See section 6.5 to Calibrate the Touchscreen

6.1 CHANGE FLAT LABELS

From the System Utility screen touch the  button and the screen will display;



Touch a channel number e.g. **0010** in the list box and it will appear in the **Flat Label** box below (use the slider bar to scroll up/down the list if necessary)

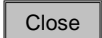
Touch the  button to clear the channel number from the Flat Label box

Enter the actual flat number or channel ID you want displayed using the 0-9 buttons

Touch the  button and the new number will be transferred to the list

Repeat for all flat labels

Touch the  button to save the new list

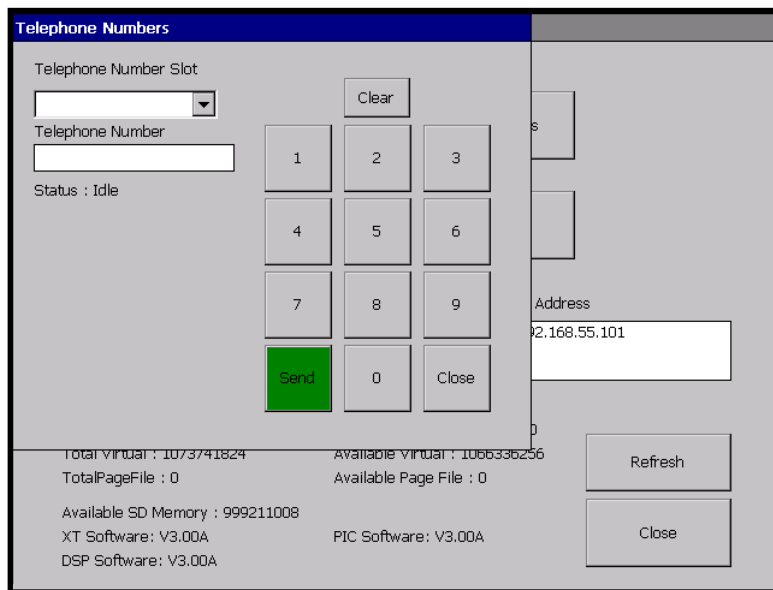
Touch the  button to exit the Flat Label mode



The Flat Labels should match the Flat Numbering in the Advent xt system

6.2 CHANGE TELEPHONE NUMBERS

From the System Utility screen touch the  button and the screen will display;



Touch the **Telephone Number Slot** list box and select the number to add or change

Status: Requesting will be displayed for a moment

Status: No Number Assigned will be displayed if there is no number in this location

Status: Received will be displayed and the current number will be in the **Telephone Number** box

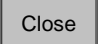
Touch the  button to delete the current number (if applicable)

Enter the new telephone number using the **0 – 9** buttons and check it is correct

Touch the  button

Status: Transmitting will be displayed for a moment

Message from xt: "The number has been changed" window will appear, touch the  button

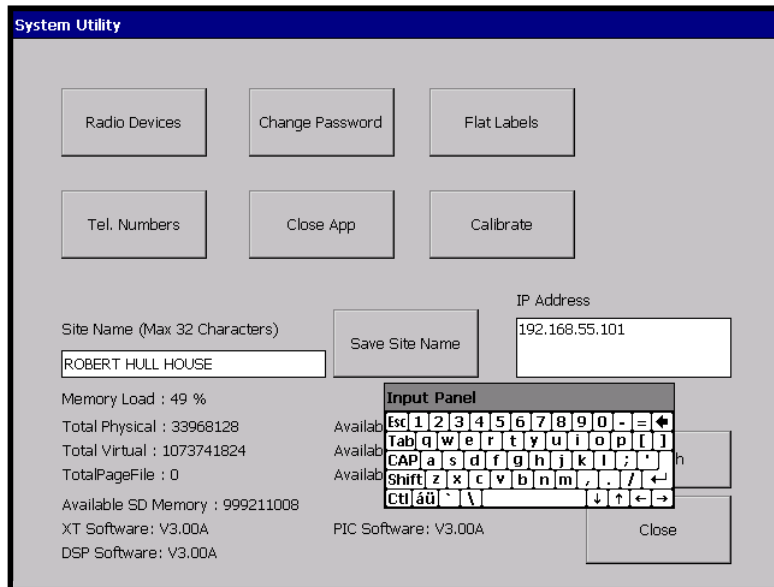
Touch the  button to exit



Always perform a test call to confirm the new telephone number is correct

6.3 CHANGE SITE NAME

From the System Utility screen touch the **Site Name** text box and the **Input Panel** will open;



Touch the **←** button on the **Input Panel** to delete the existing Site Name

Enter the new site name using the **Input Panel** keys

Touch the **Save Site Name** button

Touch the **Close** button to exit



Check the new site name is displayed correctly on the Welcome screen

6.4 CLOSE THE APPLICATION

From the System Utility screen touch the **Close App** button


A message box will prompt: **Are you sure?**

Select **Yes** to quit the Managers Panel application or **No** to exit



Always close the Managers Panel Application before turning off the mains supply

6.5 CALIBRATE THE TOUCHSCREEN

From the System Utility screen touch the  button

Press your finger on the target cross + in the centre of the screen and hold until it moves

Repeat the above procedure (i.e. touch and hold the target +) for all 4 corners of the screen

After the last corner, touch the screen anywhere to save the new settings

The display will return to the System Utility screen



Follow the instructions given above, ignore the on-screen prompts relating to using a Stylus and pressing Enter/Esc keys

7. MEMORY CARD MANAGEMENT

The System Utility screen will show the **Available SD Memory:** e.g 999211008

When the memory gets down to 20000000 (20MB) or less the panel will display a warning message every day at 10:00 AM



Contact your Service Engineer to archive data from the SD memory card

7.1 ARCHIVING MEMORY CARD DATA

Close the Managers Panel Application as described in section 6.3

Switch the Managers Panel off at the mains supply

Remove the SD card from the bottom edge of the Managers Panel

Place the SD card into a PC and view the contents using Windows Explorer

Each days Event Log is stored as a separate file e.g. **09_02_12.txt** (date.txt)

Cut the required files from the SD card and save them to an archive file on the PC

Replace the SD card into the Managers Panel and switch on



*Always observe electrostatic precautions when handling the SD memory card
Care must be taken not to delete the .exe file from the SD memory card*

7.2 FORMATTING THE MEMORY CARD

Should an incorrectly formatted SD card be used in a Managers Panel it may result in an “exception error” after some months of operation. If a new card is being fitted always ensure that it is formatted correctly before use, details are given below.

To check if the SD Card is correctly formatted;

Close the Managers Panel Application as described in section 6.3

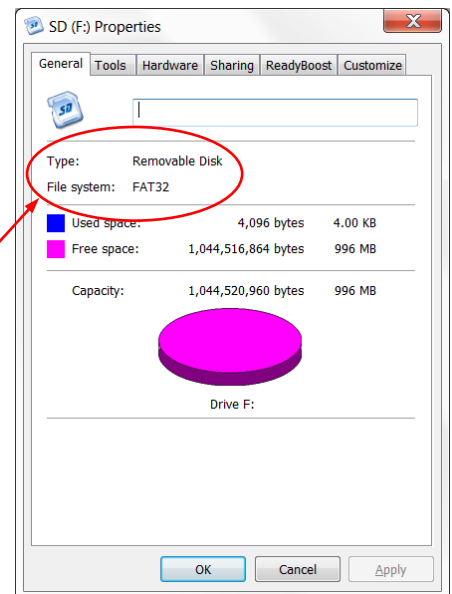
Switch the Managers Panel off at the mains supply

Remove the SD card from the bottom edge of the Managers Panel

Insert the SD card into an SD card slot on a PC

Locate the card in Windows Explorer and right-click on it

Select Properties; the card should show File System: FAT32

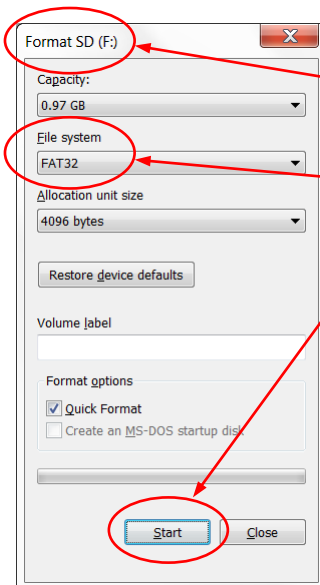


If the SD Card is not FAT32;

Copy all of the data files to a drive on the local PC, these will be copied back once the Format is complete.

Right-click on the SD card letter and select “Format”

The following will appear;



Ensure that you have the correct drive (i.e. the **SD** card) selected as you as about to erase all contents on the drive

Ensure that the **FAT32** option is selected

Click the “**Start**” button

Once the Format is complete, copy all of the data files that were saved to the local hard drive back onto the SD card

Put the SD card back into the Managers Panel

Re-apply power to the Managers Panel

The Managers Panel should start-up and run correctly from now on.



Always observe electrostatic precautions when handling the SD memory card

8. SPECIFICATION

General	
Display	10.4" Vga TFT Colour LCD 640 x 480 Pixels
Touch Screen	Resistive Touch Overlay
Operating System	Windows CE 6.0
Memory	1GB Industrial SLC SD Card (Event Log data)
Enclosure	Black ABS - 226x296x59mm (HxWxD)
Wall Bracket	VESA Standard - fixings on 50mm/75mm/100mm centres
Weight	1.85 kg (exc PSU module)
Mains Power	220-240V AC 50Hz <6 Watts
Power Supply Unit	12V DC 2A Boxed PSU - 205x240x85mm (HxWxD)
Standby Battery	Rechargeable 12V 3.4Ah Sealed Lead Acid (Yuasa NP3.4-12)
Data	Half Duplex RS485
Data Lead	3m x 1 Pair 22AWG cable and Junction Box supplied
Power Lead	3.5m x 1 Pair 7/0.2mm cable supplied
Connection to Advent xt	1 Twisted Pair Belden 8451 (or equivalent) max run 1000m
Compatibility	Advent xt V2.03C firmware onwards
Features	
Real Time Clock	Time & Date settings from Advent xt system (Auto-BST)
Site Name	User programmable - max 32 characters
Call in Progress	Display shows flat number/zone of current call
Faults Exist	Display shows if Faults Exist
Operating Mode	Display shows the current Operating Mode
Change Operating Mode	Onsite/Local Offsite/Remote Offsite - password protected
Event Log	All system events are stored with time and date
Inactivity Status	Display shows activity status of all flats
Intercom Privacy Status	Display shows warden call privacy status of all flats
I'm OK Status	Display shows I'm OK status of all flats
Handset Privacy Status	Display shows door entry privacy status of all flats
Radio Devices	Add/delete Radio Devices - password protected
Telephone Numbers	Change offsite telephone numbers - password protected



Tynetec, a business unit of Legrand Electric Ltd
 Unit 10 Cowley Road, Blyth Riverside Business Park, Blyth
 Northumberland, NE24 5TF. Tel: **01670 352 371** Fax: **01670 362 807**
 Email: sales@tynetec.co.uk Web: www.tynetec.co.uk

A Group brand |  **legrand**