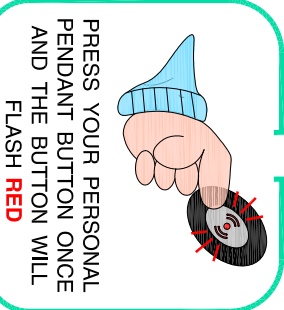
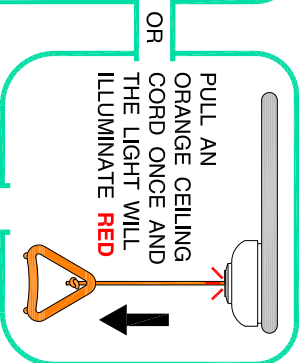
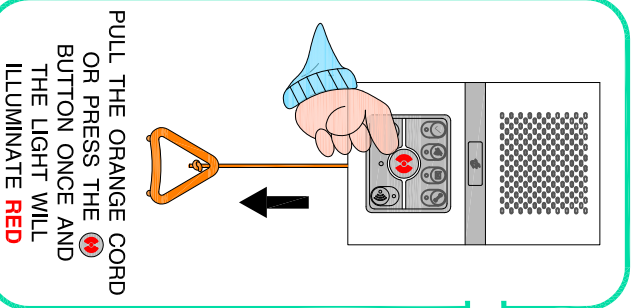
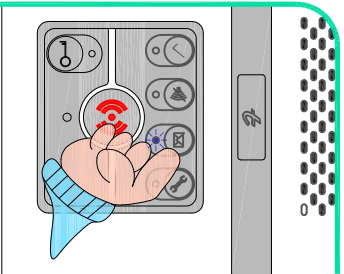


TO CALL FOR ASSISTANCE



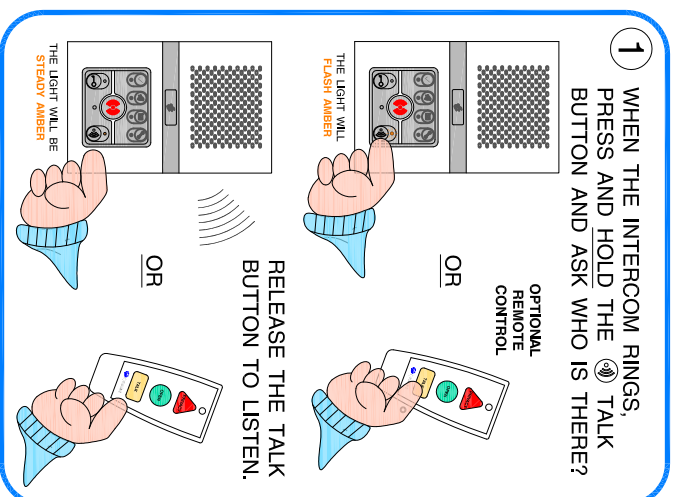
WHEN YOUR CALL IS ANSWERED
SPEAK CLEARLY AND SLOWLY

MESSAGE SERVICE



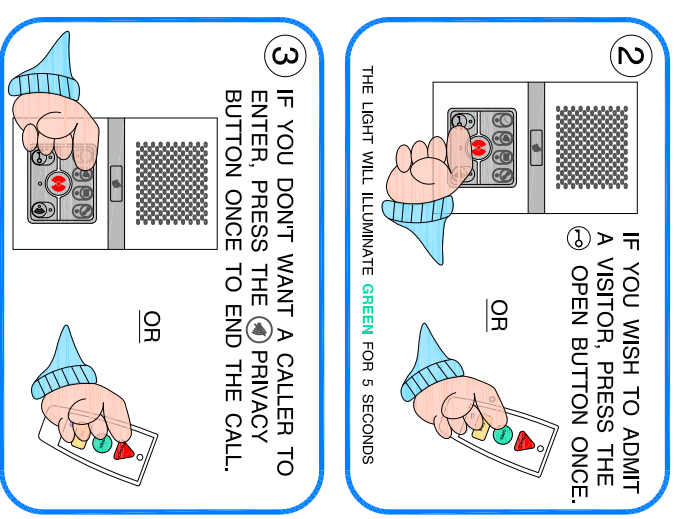
PRESS THE BUTTON TO PLAY THE MESSAGE. THE MESSAGE CAN BE REPEATED FOR UP TO 60 SECONDS.

USING THE DOOR ENTRY SYSTEM



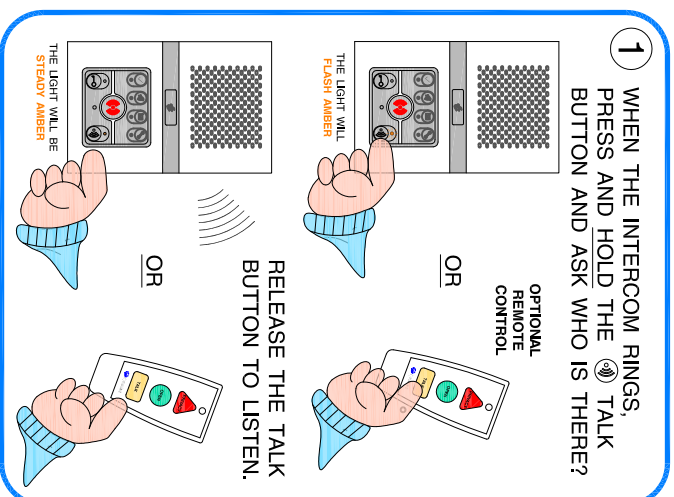
OPTIONAL
REMOTE
CONTROL

RELEASE THE TALK
BUTTON TO LISTEN.



IF YOU WISH TO ADMIT
A VISITOR, PRESS THE
 OPEN BUTTON ONCE.

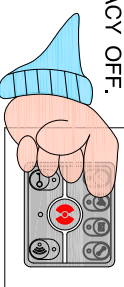
THE LIGHT WILL ILLUMINATE GREEN FOR 5 SECONDS



IF YOU DON'T WANT A CALLER TO
ENTER, PRESS THE PRIVACY
BUTTON ONCE TO END THE CALL.

PRIVACY MODE

WITH NO CALL IN PROGRESS, PRESS THE PRIVACY BUTTON ONCE AND THE LIGHT WILL ILLUMINATE AMBER. YOU WON'T GET DOOR ENTRY CALLS AND THE MANAGER CANNOT HEAR YOU WITH PRIVACY ON. PRESS AGAIN TO TURN PRIVACY OFF.

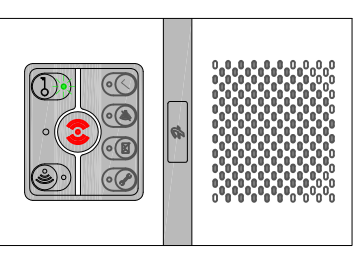


OR



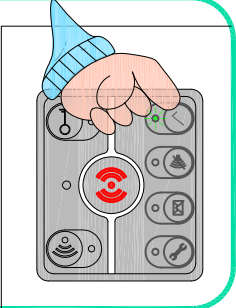
DOOR OPEN WARNING

THE LIGHT WILL FLASH GREEN IF THE DOOR IS LEFT OPEN.



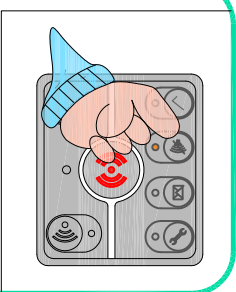
THE MAINTENANCE LIGHT WILL FLASH WHITE WHEN THE BATTERY IN YOUR REMOTE CONTROL NEEDS REPLACING.

IM OK FUNCTION



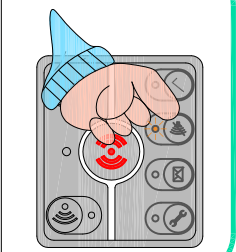
IN THE MORNING IF THE INTERCOM SOUNDS 2 TONES AND/OR THE LIGHT IS FLASHING GREEN PRESS THE BUTTON TO LET THE MANAGER KNOW YOU ARE OK.

PRIVACY MODE



FOR PRIVACY PRESS THE BUTTON ONCE AND THE LIGHT WILL ILLUMINATE AMBER. PRESS AGAIN TO TURN PRIVACY OFF.

AWAY MODE



FOR AWAY MODE PRESS AND HOLD THE BUTTON UNTIL A TONE SOUNDS THEN RELEASE. THE LIGHT WILL FLASH AMBER. PRESS AGAIN TO TURN AWAY MODE OFF.