

Installation instructions

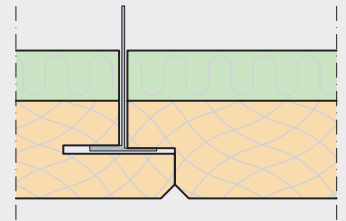
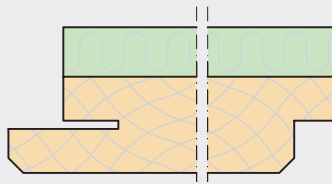
Troldtekt® Plus K5-FN

Installed in concealed corridor profiles in removable, suspended system.

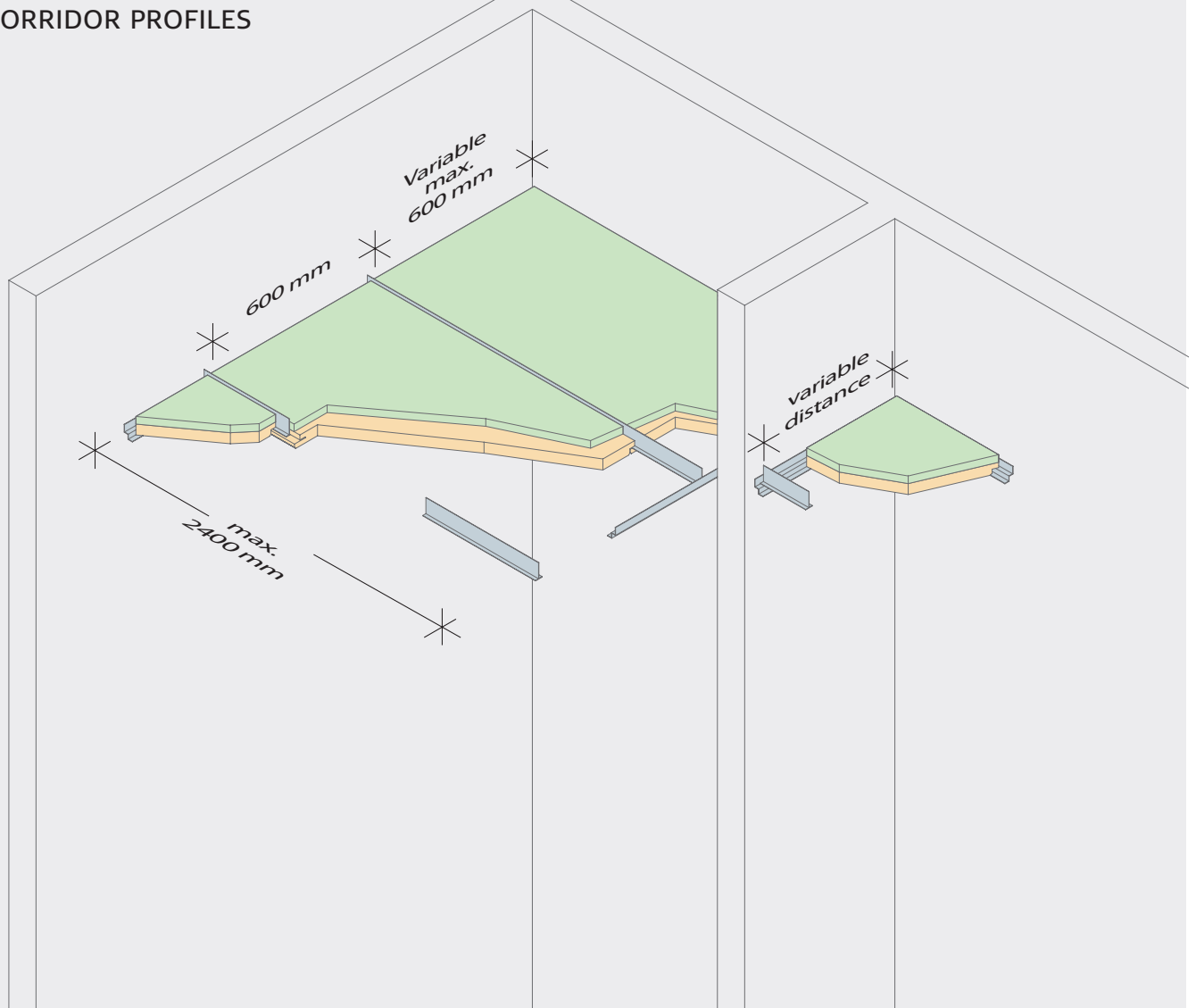
Max. span 2400 mm

TROLDTEKT® PLUS

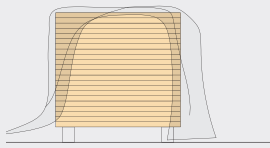
K5-FN: Rebate and groove, long edges,
5 mm bevel



INSTALLED IN CONCEALED CORRIDOR PROFILES

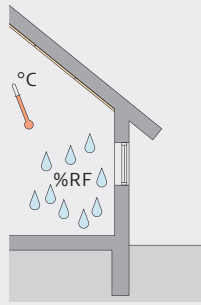


STORAGE AND ACCLIMATISATION



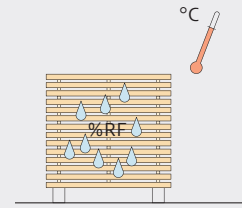
Outdoor storage

If it is necessary to store Troldtekt panels outdoors, you should protect the panels using a tarpaulin or similar. Please note that outdoor storage should be as brief as possible and never directly on the ground.



Indoor storage

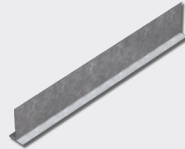
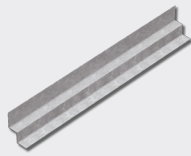
If you store Troldtekt panels indoors, you must remove any packaging, as condensate could otherwise form within the packaging. Care should be taken to protect stored Troldtekt panels from moisture, direct heat and dust.



Acclimatisation

It is important that the Troldtekt panels are allowed to acclimatise prior to installation. Acclimatisation means that the panels must adapt to the temperature and humidity in the room where they are to be installed.

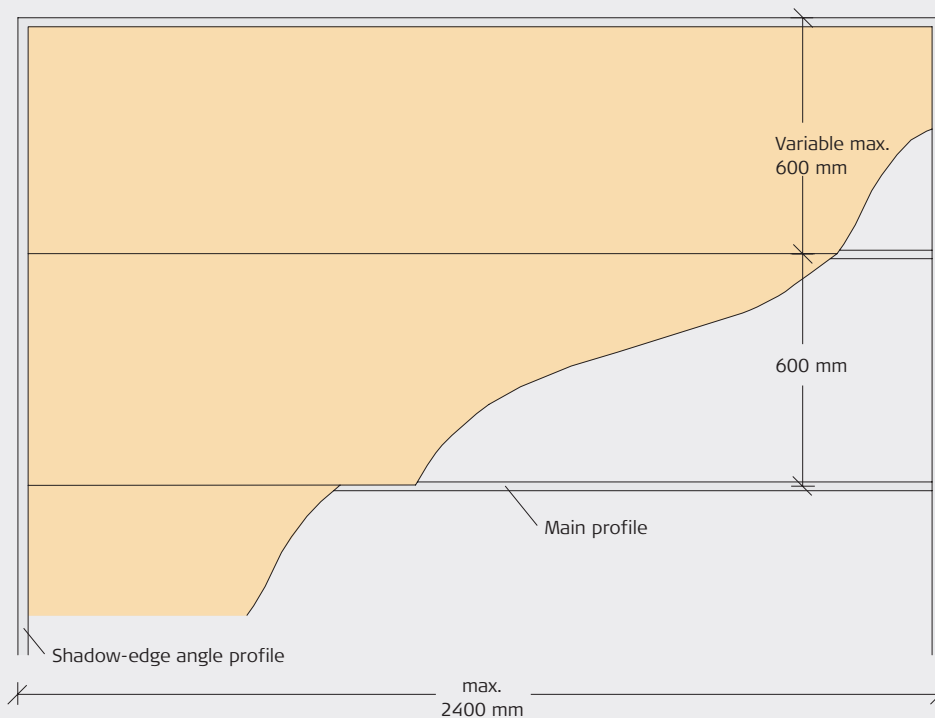
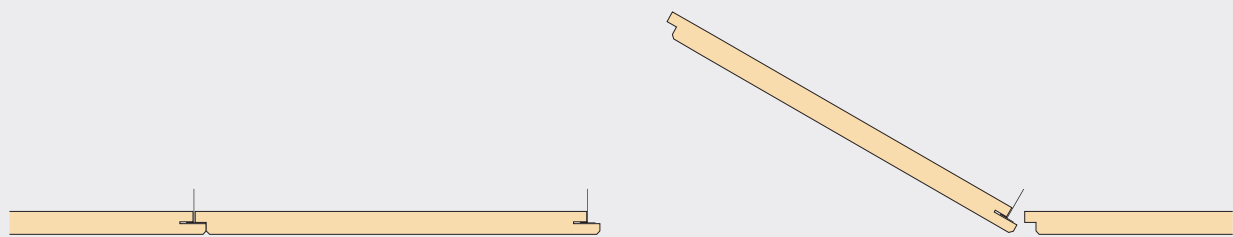
COMPONENTS



Product name	SK3000 perimeter angle profile 25/16/14/16 mm	B240 main profile 24x52 mm
Length (mm)	3000	2400
Quantity per pack	30 pcs.	-
Quantity	According to measurement	1 piece per panel

INSTALLATION

- 1:** Mark the horizontal ceiling at the required height on the walls. Fix the shadow-edge angle profiles to the wall with a minimum spacing of 600 mm. Additionally, fasten 50 mm from profile ends at joints and endings. It will facilitate installing the Troldekt panels if you install the shadow-edge angle profiles facing each other in pairs.
- 2:** Insert the corridor profiles (main profiles) into the groove of the Troldekt panels before installing them. The corridor profiles (main profiles) must lap on the shadow-edge angle profiles. Fix heavy fixtures (e.g. lighting) to the structure above. Use a hacksaw or profile cutter to cut the shadow-edge angle profiles. The corridor profiles (main profiles) can be cut using an angle grinder.
- 3:** The rebate edge on the long side of the Troldekt panels must lap on the neighbouring panel's corridor profile (main profile). You can easily push up and remove the panels if necessary for inspections or subsequent installation of cables, ventilation or similar. When adjusting the Troldekt panels, the length should correspond to the width of the corridor minus 35 mm. The corridor profile (main profile) must have the same width as the corridor.



INSPECTION ON RECEIPT

On receipt, check that the number of panels is correct and that the panels do not have visible flaws and defects. In case of defective panels, please report it immediately as

we cannot accept claims regarding visible flaws and defects after the panels have been installed.

AFTER INSTALLATION

Remove any processing dust with a vacuum cleaner with a brush nozzle. If the installation process has left lines or other dirt on natural wood panels, you can remove these by using a slightly damp

cloth. Touch-up paint is available for white painted panels. The spray paint has the same colour – white 101 – as the white painted panels. Remember to shake the can well before use!

SUBSEQUENT CARE AND MAINTENANCE

Troldtekt panels usually require no subsequent care. However, we recommend regular cleaning along with other surfaces – and otherwise as required. Use a vacuum cleaner with a brush nozzle. If vacuum-cleaning is not sufficient, you can

wipe the panels using a slightly damp cloth. If you subsequently want to paint the Troldtekt ceiling, you can use a long-haired paint roller or a hand sprayer. Water-based paint will not reduce the sound-absorbing performance of the panels.

PRODUCT STANDARDS, LABELLING AND CERTIFICATES

The table below indicates the size tolerances declared by us in accordance with the standard for cement-bonded wood wool (EN 13168) and the standard for suspended ceilings (EN 13964). It is important to note that Troldtekt is a natural material and the very nature of the material composition – wood wool and cement – may result in small variations in the thickness of the panels. Panel dimensions and

weights remain inside the tolerance indicated at 23 +/-2°C and 50 +/-5% relative humidity. However, inappropriate storage and lack of acclimatisation can alter the dimensions and weight of the panels. It is therefore important that you observe the installation, storage and acclimatisation instructions carefully. Due to the composition of the materials, colour shade variations may occur.



THICKNESS (mm)	WIDTH (mm)	LENGTH (mm)	WEIGHT (kg/m ²)	NO. OF PANELS (per pallet)	PERPENDICULARITY (mm)	PLANENESS (mm)
35	600	2400	12.0	18	≤2	≤3
(+/- 1.5)	(+/- 1)	(+/- 1.5)	(+/- 10%)			

FURTHER INFORMATION

Changes, errors and omissions excepted. You can always download the latest version of these installation instructions from

www.troldtekt.com, where you will also find all our other Troldtekt installation instructions.



Troldtekt A/S
Sletvej 2A
8310 Tranbjerg
Denmark
Tel.: +45 8747 8100
Fax: +45 8747 8111
info@troldtekt.dk

www.troldtekt.com