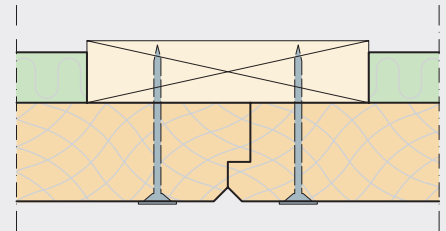
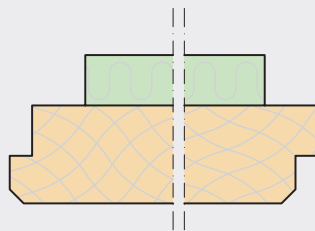


Installation instructions

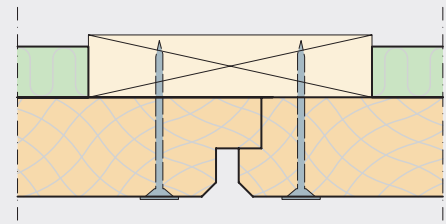
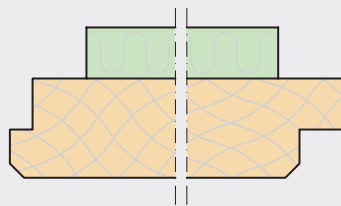
Troldtekt® Plus K5-F, K5-FU
Installed with Troldtekt screws on wooden battens

TROLDTEKT® PLUS

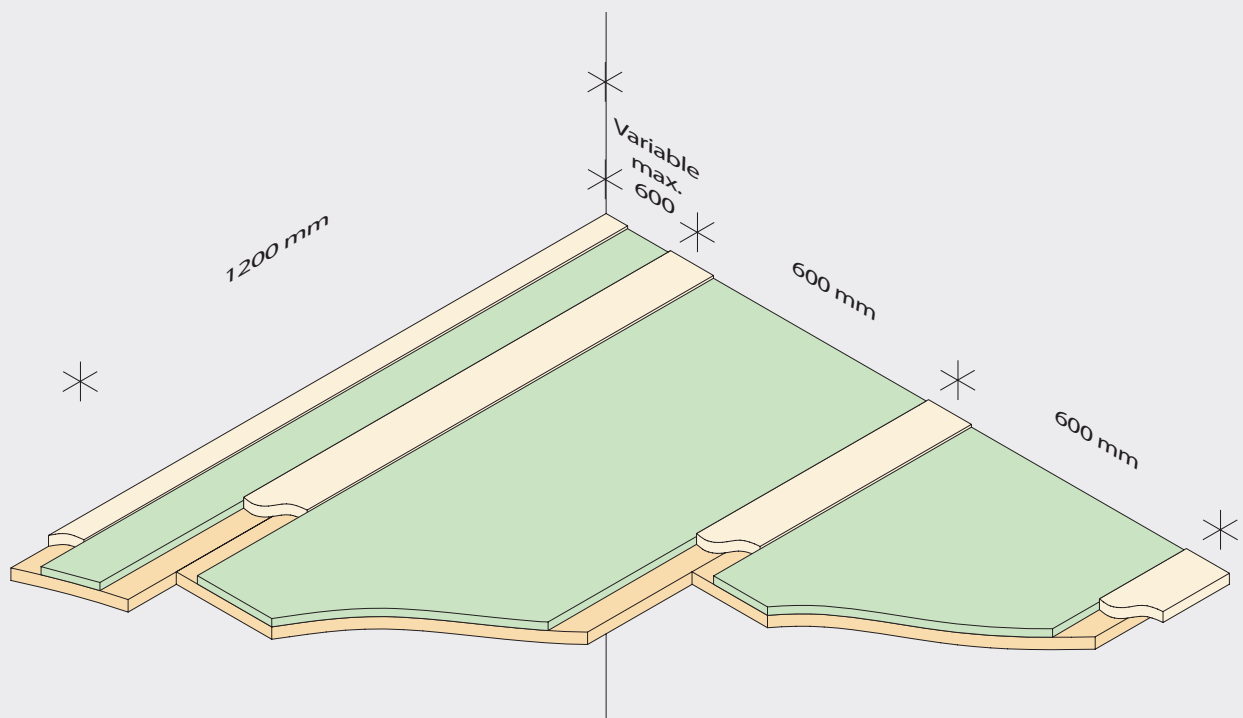
K5-F: Rebate and 5 mm bevel



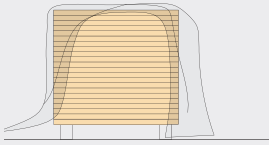
K5-FU: Rebate for U-profile and 5 mm bevel



INSTALLED ON WOODEN BATTENS

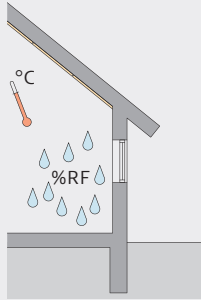


STORAGE AND ACCLIMATISATION



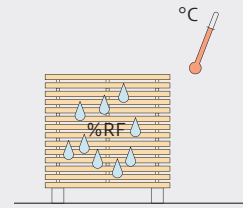
Outdoor storage

If it is necessary to store Troldtekt panels outdoors, you should protect the panels using a tarpaulin or similar. Please note that outdoor storage should be as brief as possible and never directly on the ground.



Indoor storage

If you store Troldtekt panels indoors, you must remove any packaging, as condensate could otherwise form within the packaging. Care should be taken to protect stored Troldtekt panels from moisture, direct heat and dust.

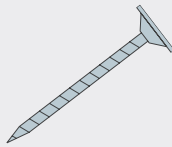


Acclimatisation

It is important that the Troldtekt panels are allowed to acclimatise prior to installation. Acclimatisation means that the panels must adapt to the temperature and humidity in the room where they are to be installed.

COMPONENTS

Troldtekt wood screw
(100 pcs. per pack)



PANEL THICKNESS (mm)	PANEL LENGTH (mm)	SCREW DIMENSION (mm)	NO. OF SCREWS (per panel)	MAX. SPAN (mm)
53 (75)	600	3.9x55	4	600
	1200		6	
	2400		10	

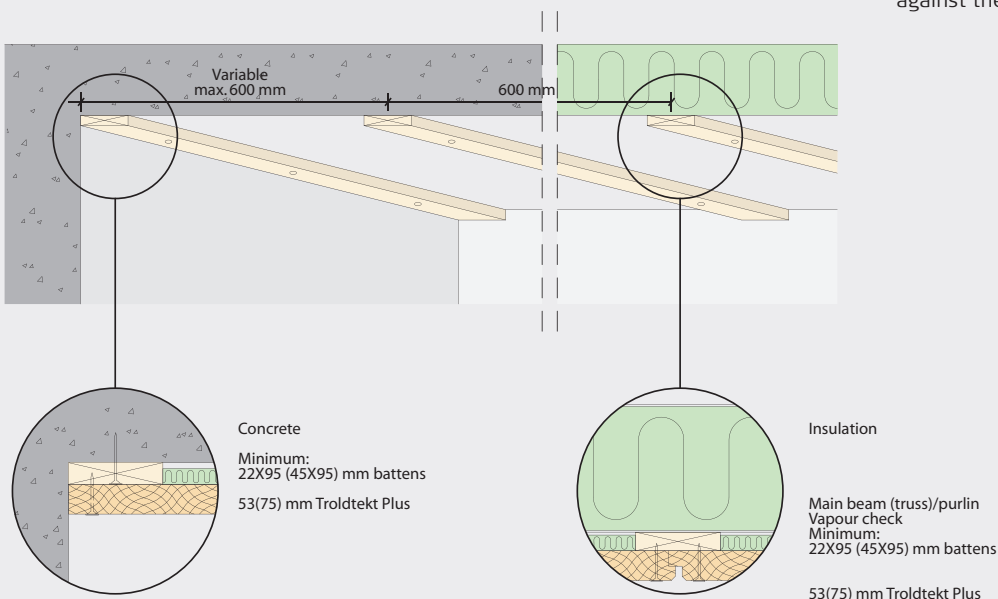
STRUCTURAL SOFFIT

As standard, Troldtekt Plus K5-FU is 53 mm (35 mm Troldtekt and 18 mm mineral wool). When installing Troldtekt Plus on wooden battens, the battens must have minimum dimensions of 22x95 mm. However, Troldtekt Plus K5-FU is also available

in 75 mm (35 mm Troldtekt and 40 mm mineral wool). In this case, the battens must have dimensions of 45x95 mm. The battens must be installed with a centre spacing of 600 mm.

Vapour check

If you need to install a vapour check, we recommend using a polyethylene. If you use aluminium foil instead, the bright side must face away from the Troldtekt panels. Install the vapour check tightly against the insulation.



INSPECTION ON RECEIPT

On receipt, check that the number of panels is correct and that the panels do not have visible flaws and defects. In case of defective panels, please report it immediately as

we cannot accept claims regarding visible flaws and defects after the panels have been installed.

AFTER INSTALLATION

Remove any processing dust with a vacuum cleaner with a brush nozzle. If the installation process has left lines or other dirt on natural wood panels, you can remove these by using a slightly damp

cloth. Touch-up paint is available for white painted panels. The spray paint has the same colour – white 101 – as the white painted panels. Remember to shake the can well before use!

SUBSEQUENT CARE AND MAINTENANCE

Troldtekt panels usually require no subsequent care. However, we recommend regular cleaning along with other surfaces – and otherwise as required. Use a vacuum cleaner with a brush nozzle. If vacuum-cleaning is not sufficient, you can

wipe the panels using a slightly damp cloth. If you subsequently want to paint the Troldtekt ceiling, you can use a long-haired paint roller or a hand sprayer. Water-based paint will not reduce the sound-absorbing performance of the panels.

PRODUCT STANDARDS, LABELLING AND CERTIFICATES

The table below indicates the size tolerances declared by us in accordance with the standard for cement-bonded wood wool (EN 13168) and the standard for suspended ceilings (EN 13964). It is important to note that Troldtekt is a natural material and the very nature of the material composition – wood wool and cement – may result in small variations in the thickness of the panels. Panel dimensions and

weights remain inside the tolerance indicated at 23 +/-2°C and 50 +/-5% relative humidity. However, inappropriate storage and lack of acclimatisation can alter the dimensions and weight of the panels. It is therefore important that you observe the installation, storage and acclimatisation instructions carefully. Due to the composition of the materials, colour shade variations may occur.



Godkendelse
MK 6.31/0379



THICKNESS (mm)	WIDTH (mm)	LENGTH (mm)	WEIGHT (kg/m ²)	NO. OF PANELS (per pallet)	PERPENDICULARITY (mm)	PLANENESS (mm)
53	600	600 1200 2400	13	36* 18/36 18	≤2	≤3
(+/- 1.5)	(+/- 1)	(+/- 1.5)				
75	600	600 1200 2400	15	26* 13/26 13	≤2	≤3
(+/- 1.5)	(+/- 1)	(+/- 1.5)				

*600x1200 mm pallet

FURTHER INFORMATION

Changes, errors and omissions excepted. You can always download the latest version of these installation instructions from

www.troldtekt.com, where you will also find all our other Troldtekt installation instructions.



Troldtekt A/S
Sletvej 2A
8310 Tranbjerg
Denmark
Tel.: +45 8747 8100
Fax: +45 8747 8111
info@troldtekt.dk

www.troldtekt.com