

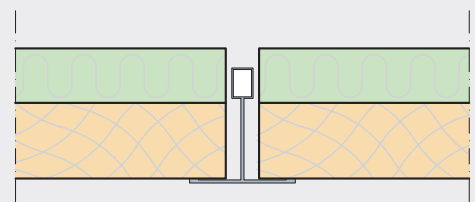
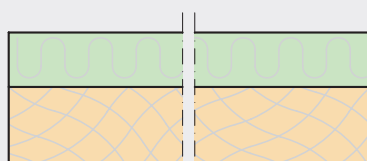
Installation instructions

Troldtekt® Plus K0-S, K0-FS

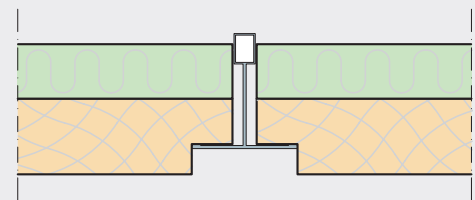
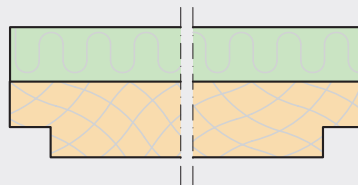
Installed in exposed T35 profiles in removable, suspended ceiling system

TROLDTEKT® PLUS

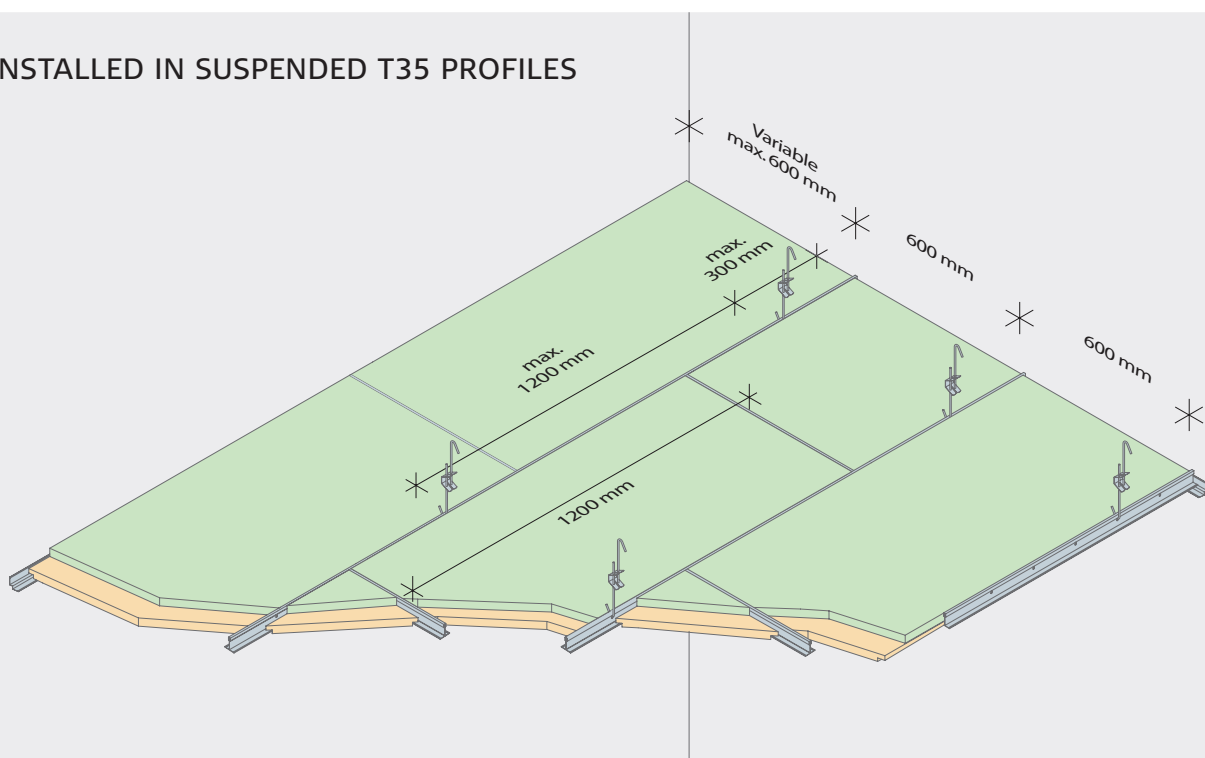
K0-S: Square edges



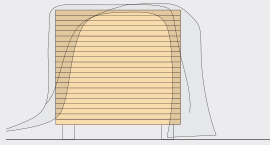
K0-FS: Rebate



INSTALLED IN SUSPENDED T35 PROFILES

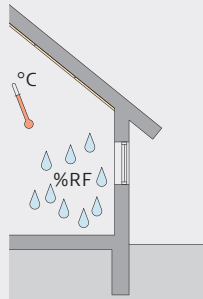


STORAGE AND ACCLIMATISATION



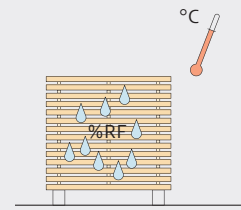
Outdoor storage

If it is necessary to store Trolldtekt panels outdoors, you should protect the panels using a tarpaulin or similar. Please note that outdoor storage should be as brief as possible and never directly on the ground.



Indoor storage

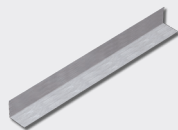
If you store Trolldtekt panels indoors, you must remove any packaging, as condensate could otherwise form within the packaging. Care should be taken to protect stored Trolldtekt panels from moisture, direct heat and dust.



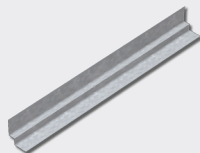
Acclimatisation

It is important that the Trolldtekt panels are allowed to acclimatise prior to installation. Acclimatisation means that the panels must adapt to the temperature and humidity in the room where they are to be installed.

COMPONENTS



Product name	Perimeter angle profile, V-300 – 30×30 mm	Cross tee, T-60 – 35×38 mm	Main tee profile, B-360 – 35×38 mm
Length (mm)	3000	600	3600
Quantity per pack	40	40	15
Approx. qty. per m ²	According to measurement	600×1200mm: 1.4 pcs. 600×600mm: 2.8 pcs.	1.7 linear m



Product name	Shadow-edge angle profile, S-300 – 22+11/9+19 mm	Adjustable hanger
Length (mm)	3000	180-300 / 300-600 / 600-1000
Quantity per pack	40 pcs.	100 pcs.
Approx. qty. per m ²	According to measurement	1.4 pcs.

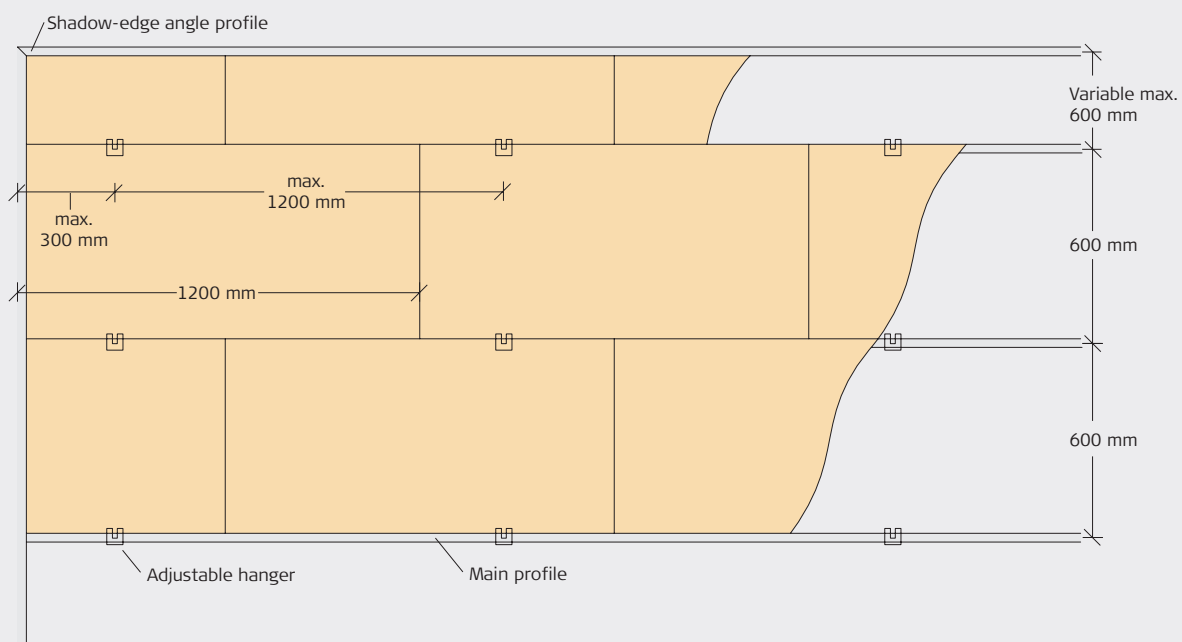
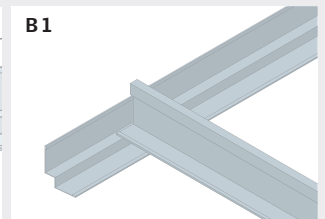
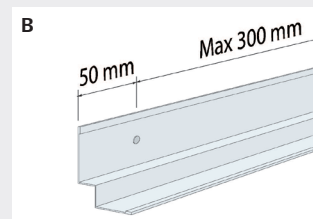
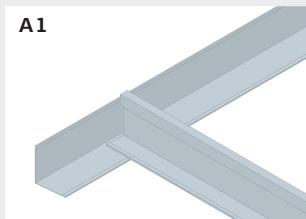
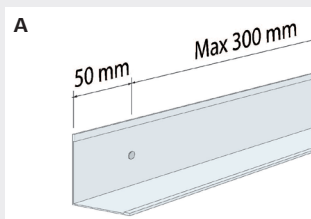
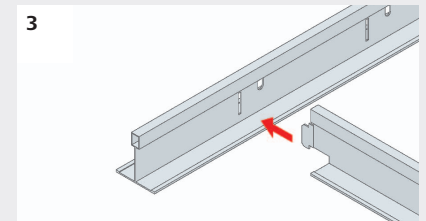
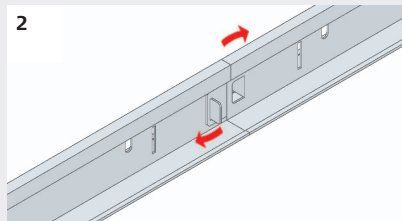
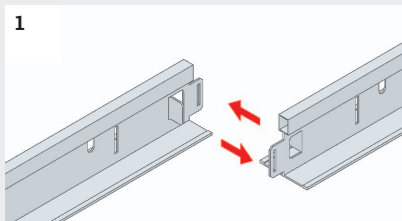
INSTALLATION

1: Fix the perimeter angle profiles or shadow-edge angle profiles securely to the wall with a max. spacing of 300 mm. Additionally, fasten 50 mm from profile ends at joints, abutments and endings. (See figs. A and B). Hang the main profiles in parallel at 600 mm, with hanger points at max. 1200 mm. There should be max. 300 mm from the transverse wall to the first hanger. The main and cross tees should lap on the perimeter angle profiles or the shadow-edge angle profiles.

2: Fix the hangers securely to the structure above. In order to facilitate installing the Troldekt Plus panels, the hooks on the adjustable hangers should face the same way, and the hanger should be min. 200 mm long. In case of increased loads from e.g. lighting armatures, the hanger spacing should be reduced. Fix heavy armatures etc. to the structure above. Cut the main tee profiles at the wall and ensure that the slots are placed correctly in relation to the cross tees near the wall. Use a hacksaw or a pro-

file cutter to cut the profiles. Connect the main tee profiles by inserting the tabs through the slots on the tongues of the main profiles. Then bend the tabs back to lock. (See figs.1 and 2).

3: Place the cross tees between the main tee profiles by inserting the tongues of the cross tees into the slots of the main tee profiles, spaced at 150 mm. (See fig. 3). When you have installed the profiles, check that all hangers are secure. Adjust if necessary. Now lay the Troldekt Plus panels in the grid.



INSPECTION ON RECEIPT

On receipt, check that the number of panels is correct and that the panels do not have visible flaws and defects. In case of defective panels, please report it immediately as

we cannot accept claims regarding visible flaws and defects after the panels have been installed.

AFTER INSTALLATION

Remove any processing dust with a vacuum cleaner with a brush nozzle. If the installation process has left lines or other dirt on natural wood panels, you can remove these by using a slightly damp

cloth. Touch-up paint is available for white painted panels. The spray paint has the same colour – white 101 – as the white painted panels. Remember to shake the can well before use!

SUBSEQUENT CARE AND MAINTENANCE

Troldtekt panels usually require no subsequent care. However, we recommend regular cleaning along with other surfaces – and otherwise as required. Use a vacuum cleaner with a brush nozzle. If vacuum-cleaning is not sufficient, you can

wipe the panels using a slightly damp cloth. If you subsequently want to paint the Troldtekt ceiling, you can use a long-haired paint roller or a hand sprayer. Water-based paint will not reduce the sound-absorbing performance of the panels.

PRODUCT STANDARDS, LABELLING AND CERTIFICATES

The table below indicates the size tolerances declared by us in accordance with the standard for cement-bonded wood wool (EN 13168) and the standard for suspended ceilings (EN 13964). It is important to note that Troldtekt is a natural material and the very nature of the material composition – wood wool and cement – may result in small variations in the thickness of the panels. Panel dimensions and

weights remain inside the tolerance indicated at 23 +/-2°C and 50 +/-5% relative humidity. However, inappropriate storage and lack of acclimatisation can alter the dimensions and weight of the panels. It is therefore important that you observe the installation, storage and acclimatisation instructions carefully. Due to the composition of the materials, colour shade variations may occur.



Godkendelse
MK 6.31/0379



THICKNESS (mm)	WIDTH (mm)	LENGTH (mm)	WEIGHT (kg/m ²)	NO. OF PANELS (per pallet)	PERPENDICULARITY (mm)	PLANENESS (mm)
43	600	600 1200	11	46 23/46	≤2	≤3
(+/- 1.5)	(+/- 1)	(+/- 1.5)	(+/- 10%)			

*600x1200 mm pallet

FURTHER INFORMATION

Changes, errors and omissions excepted. You can always download the latest version of these installation instructions from

www.troldtekt.com, where you will also find all our other Troldtekt installation instructions.



Troldtekt A/S
Sletvej 2A
8310 Tranbjerg
Denmark
Tel.: +45 8747 8100
Fax: +45 8747 8111
info@troldtekt.dk

www.troldtekt.com