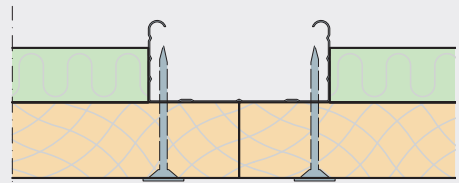
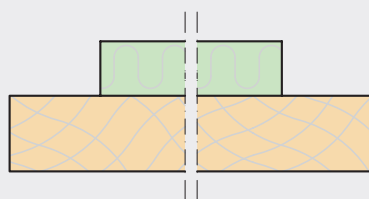


Installation instructions

Troldekt® Plus K0, K5, K5-V, K11
Installed as floating cloud on C60 profiles
terminated in aluminium profiles

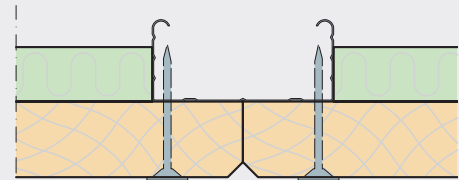
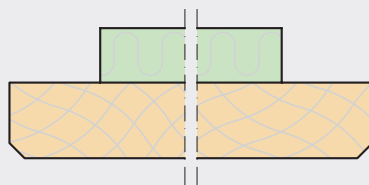
TROLDTEKT® PLUS

K0: Square edge

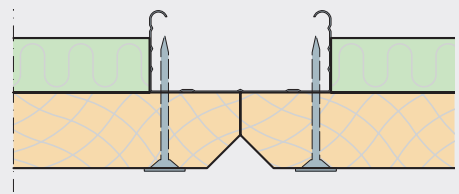
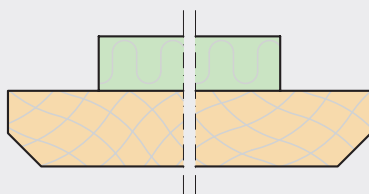


K5: 5 mm bevel

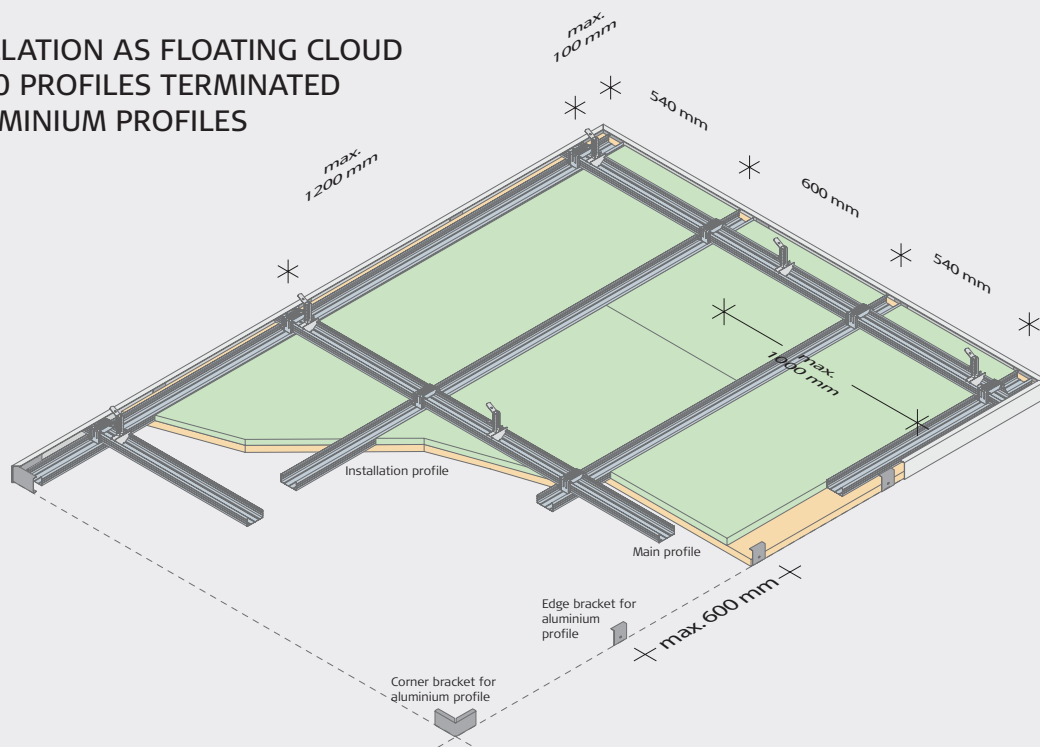
K5-V: 5 mm bevel and V-groove
for plank effect



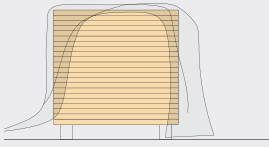
K11: 11 mm bevel



INSTALLATION AS FLOATING CLOUD ON C60 PROFILES TERMINATED IN ALUMINIUM PROFILES

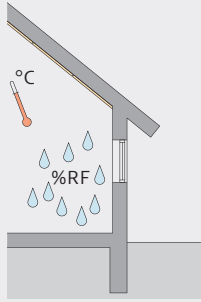


STORAGE AND ACCLIMATISATION



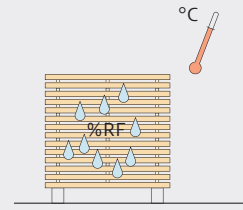
Outdoor storage

If it is necessary to store Troldtekt panels outdoors, you should protect the panels using a tarpaulin or similar. Please note that outdoor storage should be as brief as possible and never directly on the ground.



Indoor storage

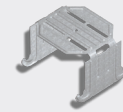
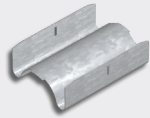
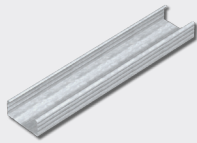
If you store Troldtekt panels indoors, you must remove any packaging, as condensate could otherwise form within the packaging. Care should be taken to protect stored Troldtekt panels from moisture, direct heat and dust.



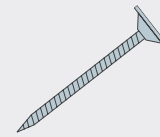
Acclimatisation

It is important that the Troldtekt panels are allowed to acclimatise prior to installation. Acclimatisation means that the panels must adapt to the temperature and humidity in the room where they are to be installed.

COMPONENTS

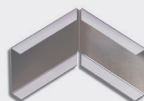


Product name	C60 profile 60×27 mm	C-connector	C-quick-fit suspension bracket	C-cross connector
Length (mm)	4000	80	100	
Quantity per pack	12	100	100	100
Approx. consumption per m ²	2.5 lbm	0.6 pcs.	1.1 pcs.	1.4 pcs.



Product name	Ring hook	Ceiling drive anchor	Troldtekt self-tapping screw
Length (mm)	125, 250, 375, 500, 750, 1000	40	3.9×45
Quantity per pack	100	100	100
Approx. consumption per m ²	1.1 pcs.	1.1 pcs.	Panel length: 600 mm: 4 pcs. per panel 1200 mm: 6 pcs. per panel 2400 mm: 10 pcs. per panel

Note: If there is a risk of wind-related pressure/suction impact, you should install the Troldtekt C60 profile system with fixed quick-hangers – nonius quick-hangers – instead of ring hooks.



Product name	Aluminium profile	Corner bracket	Edge bracket including screw hole and screws
Dimension (mm)	59×18×600/1200/2400/3000/3600	50×84×84	50×50

STRUCTURAL SOFFIT

1: Start by calculating the precise cloud dimensions. Determine and mark the anchor points for the main profiles based on the cloud size minus 100 mm longitudinally and transversally. Install quick-hangers in the four corner anchor points, and distribute the remaining quick-hangers with a max. spacing of 1000 mm. Assemble ring hook and quick-fit suspension bracket to the desired length and install them on the ceiling drive anchor before further installation. Drill 6 mm holes in the con-

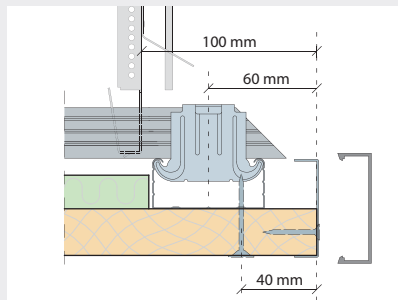
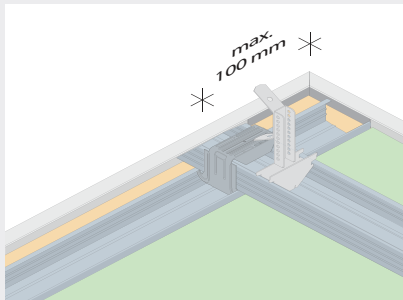
crete deck and install the ceiling drive anchor with ring hook and quick-fit suspension bracket by striking the ceiling drive anchor into the hole until it is lodged. Then bend the ring hook into vertical position. Alternatively, screw the ring hooks into a steel or wooden base.

2: Hold a main profile (C60 profile) with the opening facing upwards and click the profile over the quick-fit suspension bracket at every hanger point.

Assemble the C60 profiles longitudinally using G-connectors. Cut off a little mineral wool to provide space for the outermost installation profile.

3: Then click the installation profiles (C60 profiles) on the main profiles using the cross connectors.

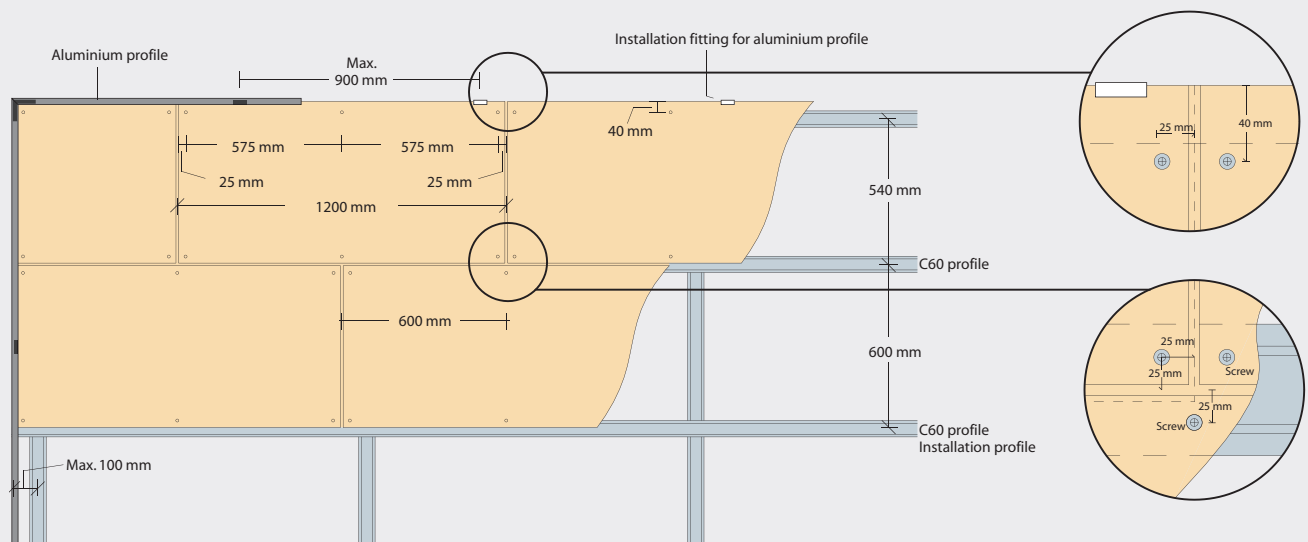
Note: If the lateral position of the profiles is not entirely precise, you can easily push the profile in the cross connector. Lock the cross connectors by bending down the tabs.



INSTALLATION

1: Start by installing a complete row of Troldtekt Plus panels along the centre line of the cloud. Then continue on both sides. It is important that the panels are installed closely together, and the optimum aesthetic effect is obtained by installing the panels in broken bond.

2: Fix the panels using Troldtekt self-tapping screws spaced 40 mm from the edges - as indicated in the figure below. Be careful not to overdrive the washered screws and so cause an indentation in the panel.



INSPECTION ON RECEIPT

On receipt, check that the number of panels is correct and that the panels do not have visible flaws and defects. In case of defective panels please report it immediately, as

we cannot accept claims regarding visible flaws and defects after the panels have been installed.

AFTER INSTALLATION

Remove any processing dust with a vacuum cleaner with a brush nozzle. If the installation process has left lines or other dirt on natural wood panels, you can remove these by using a slightly damp

cloth. Touch-up paint is available for white painted panels. The spray paint has the same colour – white 101 – as the white painted panels. Remember to shake the can well before use!

SUBSEQUENT CARE AND MAINTENANCE

Troldtekt panels usually require no subsequent care. However, we recommend regular cleaning along with other surfaces – and otherwise as required. Use a vacuum cleaner with a brush nozzle. If vacuum-cleaning is not sufficient, you can

wipe the panels using a slightly damp cloth. If you subsequently want to paint the Troldtekt ceiling, you can use a long-haired paint roller or a hand sprayer. Water-based paint will not reduce the sound-absorbing performance of the panels.

PRODUCT STANDARDS, LABELLING AND CERTIFICATES

The table below indicates the size tolerances declared by us in accordance with the standard for cement-bonded wood wool (EN 13168) and the standard for suspended ceilings (EN 13964). It is important to note that Troldtekt is a natural material and the very nature of the material composition – wood wool and cement – may result in small variations in the thickness of the panels. Panel dimensions and

weights remain inside the tolerance indicated at 23 +/-2°C and 50 +/-5% relative humidity. However, inappropriate storage and lack of acclimatisation can alter the dimensions and weight of the panels. It is therefore important that you observe the installation, storage and acclimatisation instructions carefully. Due to the composition of the materials, colour shade variations may occur.



Godkendelse
MK 6.31/0379



THICKNESS (mm)	WIDTH (mm)	LENGTH (mm)	WEIGHT (kg/m ²)	NO. OF PANELS (per pallet)	PERPENDICULARITY (mm)	PLANENESS (mm)
43	600	600 1200 2400	11	46 23/46 23	≤2	≤3
(+/- 1.5)	(+/- 1)	(+/- 1.5)	(+/- 10%)			
53	600	600 1200 2400	13	36 18/36 18	≤2	≤3
(+/- 1.5)	(+/- 1)	(+/- 1.5)	(+/- 10%)			

*600×1200 mm pallets

FURTHER INFORMATION

Changes, errors and omissions excepted. You can always download the latest version of these installation instructions from

www.troldtekt.com, where you will also find all our other Troldtekt installation instructions.



Troldtekt A/S
Sletvej 2A
8310 Tranbjerg
Denmark
Tel.: +45 8747 8100
Fax: +45 8747 8111
info@troldtekt.dk

www.troldtekt.com