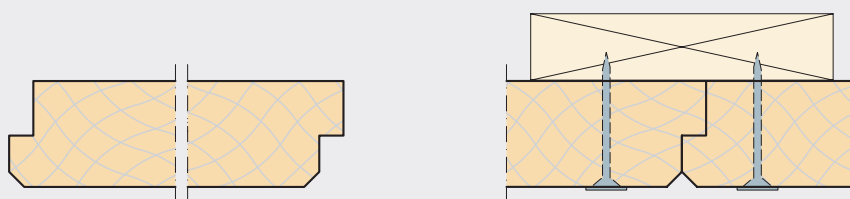


# Installation instructions

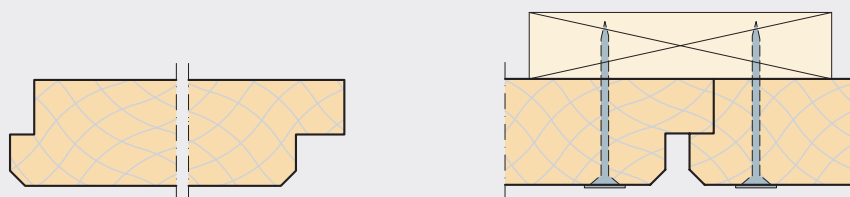
Troldtekt® acoustic panels K5-F and K5-FU  
Installed with Troldtekt screws on wooden battens

## TROLDTEKT® ACOUSTIC PANELS

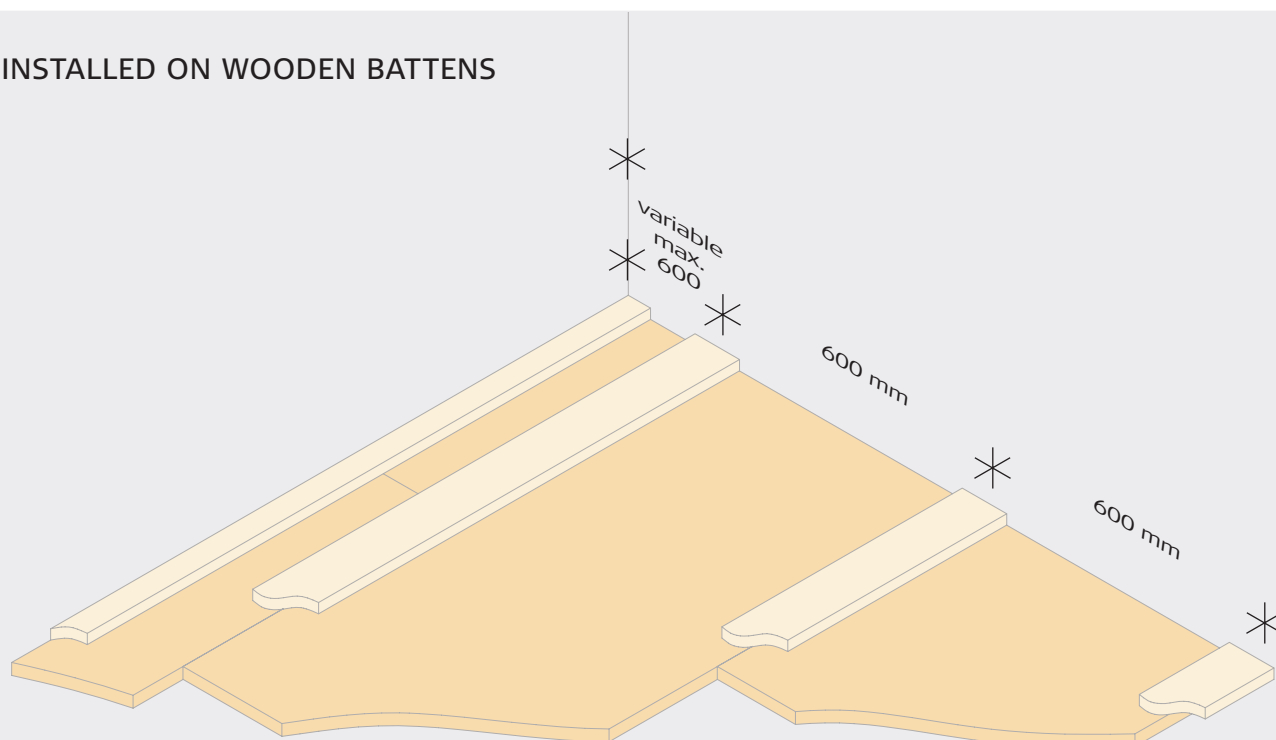
K5-F: Rebate and 5 mm bevel



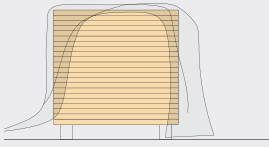
K5-FU: Rebate for U-profile and 5 mm bevel



## INSTALLED ON WOODEN BATTENS

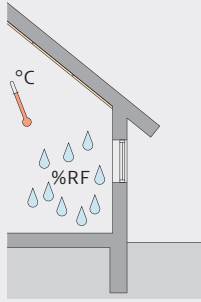


## STORAGE AND ACCLIMATISATION



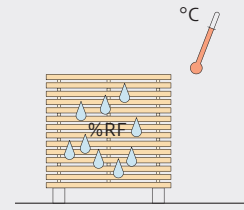
### Outdoor storage

If it is necessary to store Troldtekt panels outdoors, you should protect the panels using a tarpaulin or similar. Please note that outdoor storage should be as brief as possible and never directly on the ground.



### Indoor storage

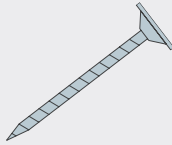
If you store Troldtekt panels indoors, you must remove any packaging, as condensation could otherwise form within the packaging. Care should be taken to protect stored Troldtekt panels from moisture, direct heat and dust.



### Acclimatisation

It is important that the Troldtekt panels are allowed to acclimatise prior to installation. Acclimatisation means that the panels must adapt to the temperature and humidity in the room where they are to be installed.

## COMPONENTS



Troldtekt wood screw  
(100 pcs. per pack)

PANEL THICKNESS (mm)	PANEL LENGTH (mm)	SCREW DIMENSION (mm)	NO. OF SCREWS (pcs. per panel)	MAX. SPAN (mm)
35	600	3.9×55	4	600
	1200		6	
	2400		10	

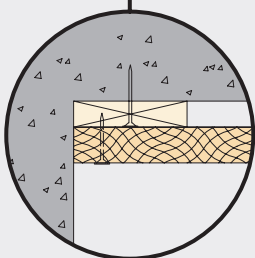
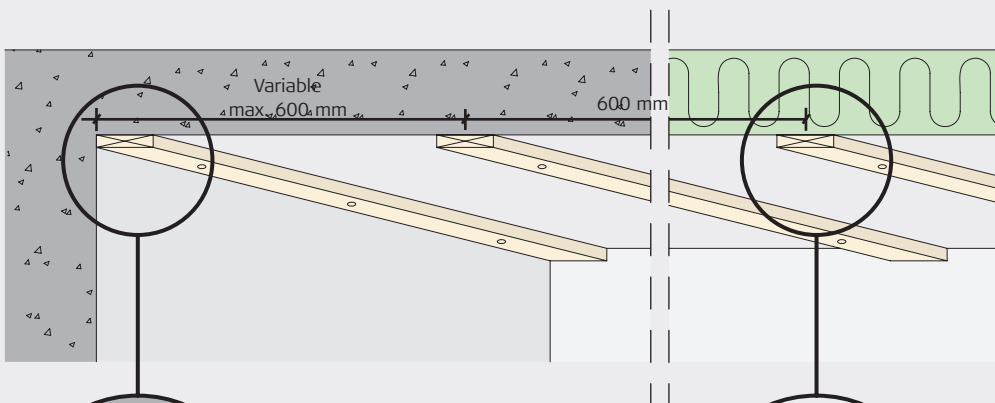
## STRUCTURAL SOFFIT

When installing Troldtekt panels on wooden battens, the battens must have a minimum dimension of 22×95 mm. The battens must be installed with a centre spacing of 600 mm.

### Vapour check

If you need to install a vapour check, we recommend using polyethylene. If you use aluminium foil instead, the bright side must face away from the Troldtekt

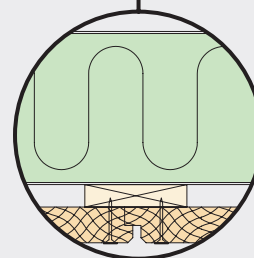
panels. Install the vapour check tightly against the insulation.



### Concrete

Minimum:  
22×95 mm battens

35 mm Troldtekt panels



### Insulation

Main beam (truss)/purlin  
Vapour check

Minimum:  
22×95 mm battens

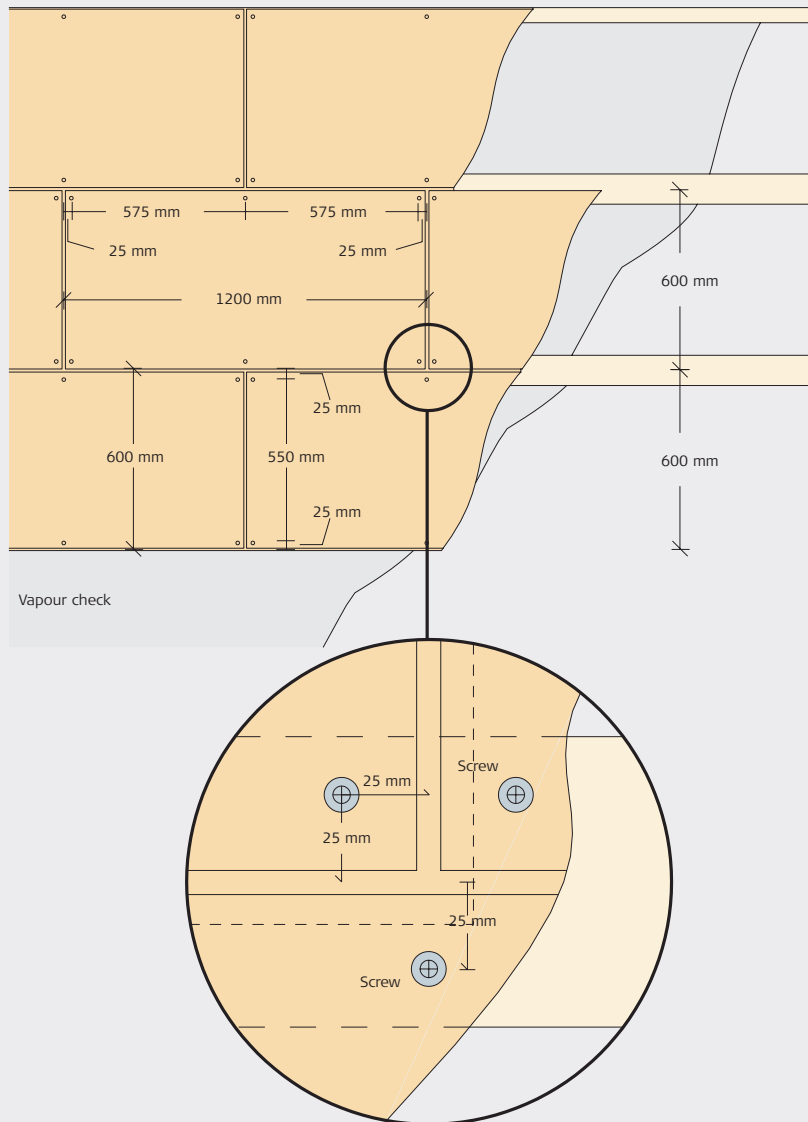
35 mm Troldtekt panels

## INSTALLATION

**1:** Start by installing a complete row of Troldekt panels along the centre line of the room and work with rows of panels from the centre. It is important that the panels are installed closely together, and the optimum aesthetic effect is obtained by installing rectangular panels in broken bond.

**2:** Fix the panels using Troldekt screws spaced 25 mm from the edges – as indicated in the figure below. Be careful not to overdrive the washered screws and so cause an indentation in the panel.

**3: Please note:** When installing 600 × 600 mm panels, it is important to ensure that the wood wool fibres run mainly parallel in one direction. To ensure a uniform appearance, install the panels so that the printed Troldekt texts on the back of the panels all run in the same direction.



**Note:** K5-F and K5-FU are only suitable for installation on longitudinal battens.

## INSPECTION ON RECEIPT

On receipt, check that the number of panels is correct and that the panels do not have visible flaws and defects. Please inform the supplier immediately in case of defective

panels, as we cannot accept claims regarding visible flaws and defects after the panels have been installed.

## AFTER INSTALLATION

Remove any processing dust with a vacuum-cleaner with a brush nozzle.

If the installation process has left lines or other dirt on natural wood panels, you can

remove these by using a slightly damp cloth. Touch-up paint is available as required.

## SUBSEQUENT CARE AND MAINTENANCE

Troldtekt panels usually require no subsequent care. However, we recommend regular cleaning along with other surfaces – and otherwise as required.

Use a vacuum cleaner with a brush nozzle. If vacuum-cleaning is not sufficient, you can

wipe the panels using a slightly damp cloth. If you subsequently want to paint the Troldtekt ceiling, you can use a long-haired paint roller or a hand sprayer. Water-based paint will not reduce the sound-absorbing performance of the panels.

## PRODUCT STANDARDS, LABELLING AND CERTIFICATES

The table below indicates the size tolerances declared by us in accordance with the standard for cement-bonded wood wool (EN 13168) and the standard for suspended ceilings (EN 13964). It is important to note that Troldtekt is a natural material and the very nature of the material composition – wood wool and cement – may result in small variations in the thickness of the panels. Panel dimensions and weights

remain inside the tolerance indicated at 23 +/- 2° C and 50 +/- 5% relative humidity. However, inappropriate storage and lack of acclimatisation can alter the dimensions and weight of the panels. It is therefore important that you observe the installation, storage and acclimatisation instructions carefully.

Due to the composition of the materials, colour shade variations may occur.



THICKNESS (mm)	WIDTH (mm)	LENGTH (mm)	WEIGHT (kg/m <sup>2</sup> )	NO. OF PANELS (per pallet)	PERPENDICULARITY (mm)	PLANENESS (mm)
35	600	600 1190 2400	12.0	56* 56 28	≤2	≤3
(+/- 1.5)	(+/- 1)	(+/- 1.5)	(+/- 10%)			

\*600×1200 mm pallet

## FURTHER INFORMATION

On [www.troldtekt.com](http://www.troldtekt.com) you can read more about Troldtekt products. You can also download the most recent version of these

installation instructions and see the complete range of Troldtekt installation instructions.



Troldtekt A/S  
Sletvej 2A  
DK-8310 Tranbjerg J  
Tel. +45 8747 8100  
Fax +45 8747 8111  
info@troldtekt.dk

[www.troldtekt.com](http://www.troldtekt.com)