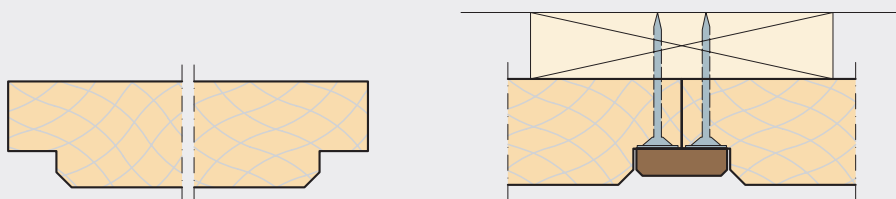


Installation instructions

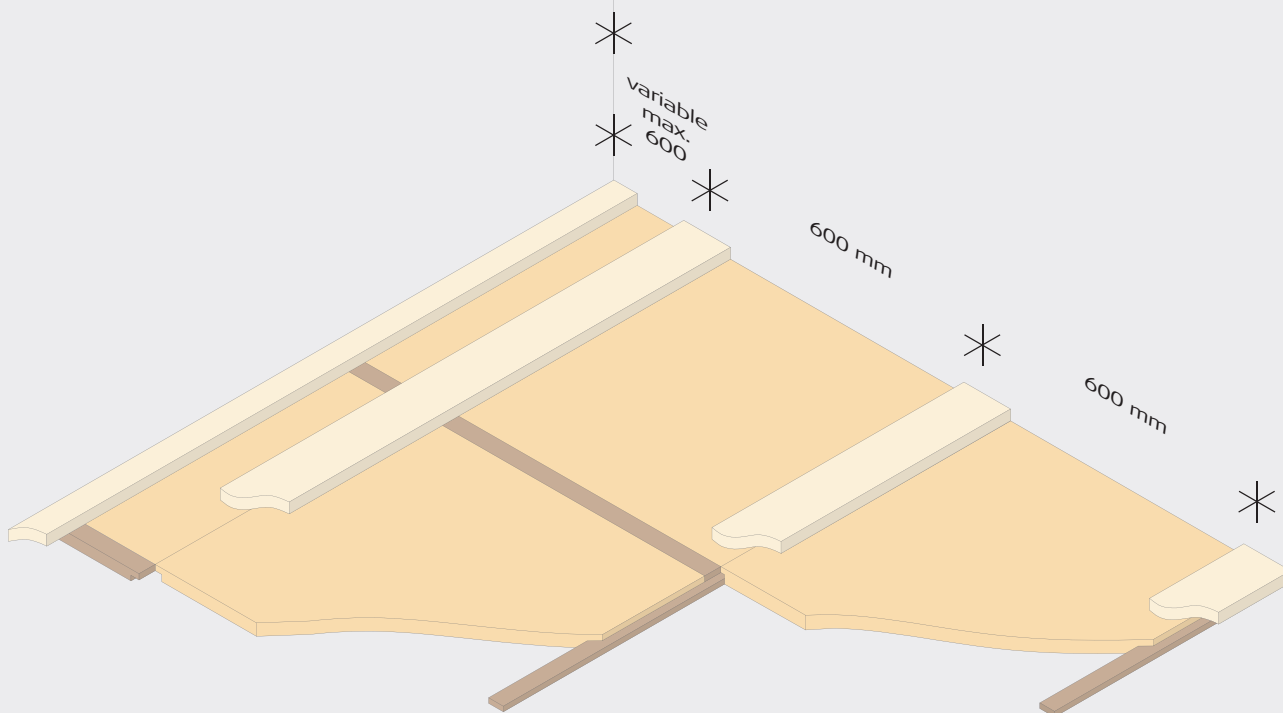
Troldekt® acoustic panels K5-FP
Installed with Troldekt screws on wooden battens

TROLDTEKT® ACOUSTIC PANELS

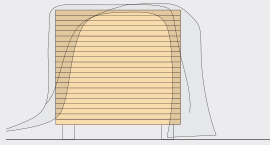
K5-FP: Rebate for cover strip and 5 mm bevel



INSTALLED ON WOODEN BATTENS

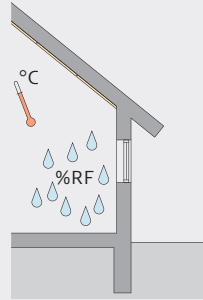


STORAGE AND ACCLIMATISATION



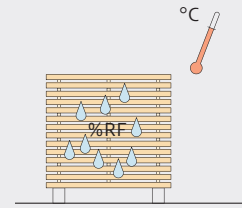
Outdoor storage

If it is necessary to store Troldtekt panels outdoors, you should protect the panels using a tarpaulin or similar. Please note that outdoor storage should be as brief as possible and never directly on the ground.



Indoor storage

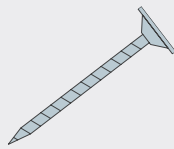
If you store Troldtekt panels indoors, you must remove any packaging, as condensation could otherwise form within the packaging. Care should be taken to protect stored Troldtekt panels from moisture, direct heat and dust.



Acclimatisation

It is important that the Troldtekt panels are allowed to acclimatise prior to installation. Acclimatisation means that the panels must adapt to the temperature and humidity in the room where they are to be installed.

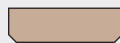
COMPONENTS



Troldtekt wood screw
(100 pcs. per pack)

PANEL THICKNESS (mm)	PANEL LENGTH (mm)	SCREW DIMENSION (mm)	NO. OF SCREWS (pcs. per panel)	MAX. SPAN (mm)
35	600	3.9×45	4	600

Longitudinal cover strip
30×9×variable length mm



Transverse cover strip 30×32×600 mm



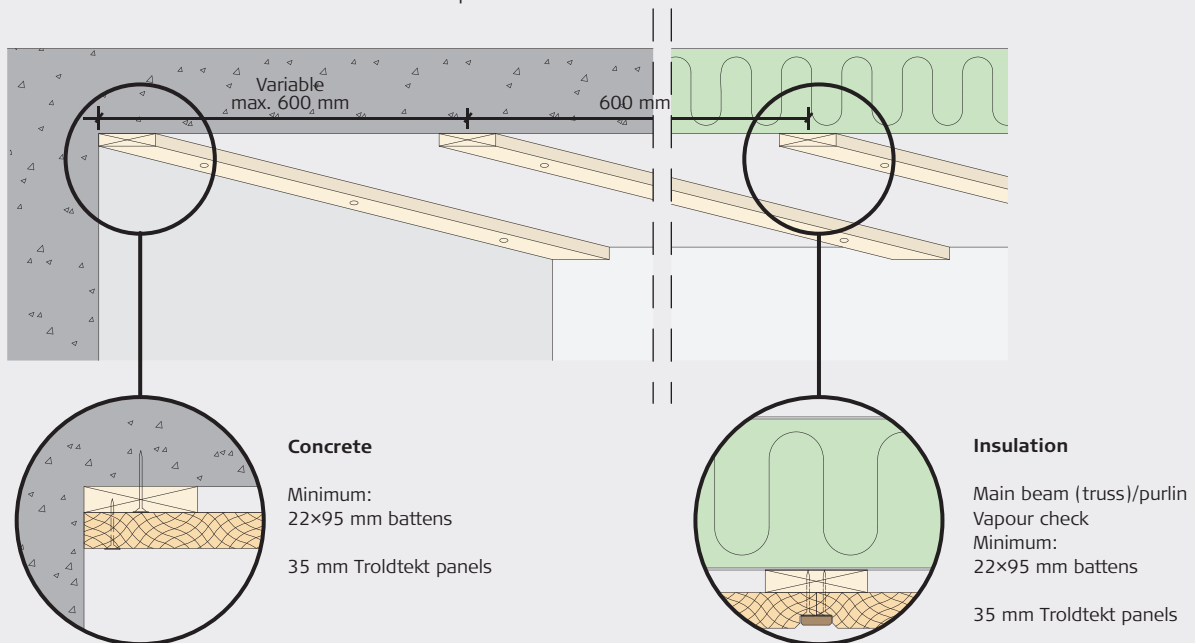
STRUCTURAL SOFFIT

When installing Troldtekt panels on wooden battens, the battens must have a minimum dimension of 22×95 mm. The battens must be installed with a centre spacing of 600 mm.

Vapour check

If you need to install a vapour check, we recommend using polyethylene. If you use aluminium foil instead, the bright side must face away from the Troldtekt panels.

Install the vapour check tightly against the insulation.

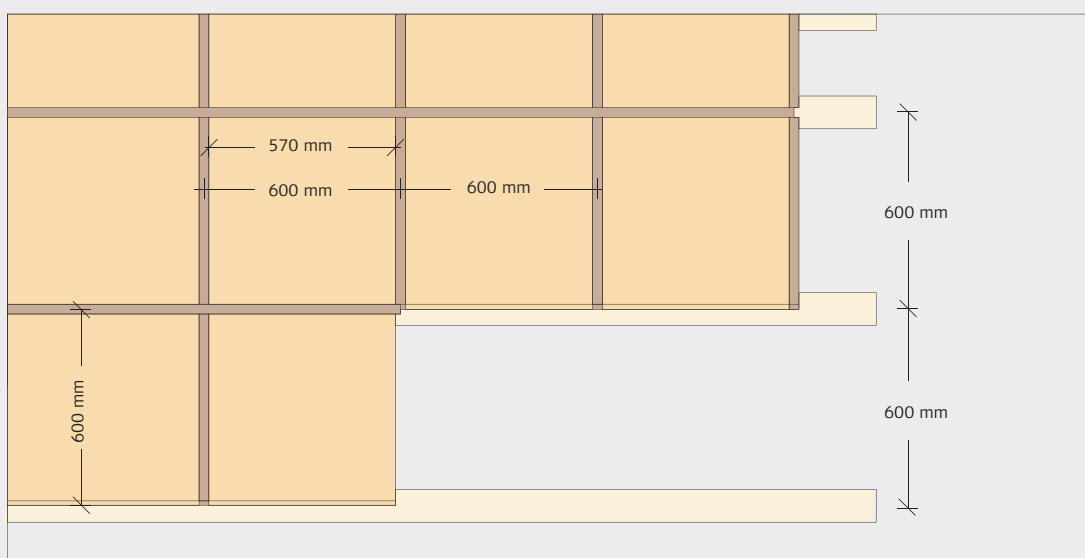


INSTALLATION

1: Start by locating the centre line of the room and install the first Troldtekt panel along this line. Fix the panel with Troldtekt screws in the rebate 25 mm from the edge.

2: Now install the first transverse cover strip and fix it using tacks (staple gun) or brads. Continue installing Troldtekt panels and transverse cover strips along the centre line of the room. Then work with rows of panels in the centre.

3: Install the longitudinal cover strips last.



INSPECTION ON RECEIPT

On receipt, check that the number of panels is correct and that the panels do not have visible flaws and defects. Please inform the supplier immediately in case of defective

panels, as we cannot accept claims regarding visible flaws and defects after the panels have been installed.

AFTER INSTALLATION

Remove any processing dust with a vacuum-cleaner with a brush nozzle.

If the installation process has left lines or other dirt on natural wood panels, you can

remove these by using a slightly damp cloth. Touch-up paint is available as required.

SUBSEQUENT CARE AND MAINTENANCE

Troldtekt panels usually require no subsequent care. However, we recommend regular cleaning along with other surfaces – and otherwise as required.

Use a vacuum cleaner with a brush nozzle. If vacuum-cleaning is not sufficient, you can

wipe the panels using a slightly damp cloth. If you subsequently want to paint the Troldtekt ceiling, you can use a long-haired paint roller or a hand sprayer. Water-based paint will not reduce the sound-absorbing performance of the panels.

PRODUCT STANDARDS, LABELLING AND CERTIFICATES

The table below indicates the size tolerances declared by us in accordance with the standard for cement-bonded wood wool (EN 13168) and the standard for suspended ceilings (EN 13964). It is important to note that Troldtekt is a natural material and the very nature of the material composition – wood wool and cement – may result in small variations in the thickness of the panels. Panel dimensions and weights

remain inside the tolerance indicated at 23 +/- 2° C and 50 +/- 5% relative humidity. However, inappropriate storage and lack of acclimatisation can alter the dimensions and weight of the panels. It is therefore important that you observe the installation, storage and acclimatisation instructions carefully.

Due to the composition of the materials, colour shade variations may occur.



mtk Godkendelse
MK 6.31/0379



THICKNESS (mm)	WIDTH (mm)	LENGTH (mm)	WEIGHT (kg/m ²)	NO. OF PANELS (per pallet)	PERPENDICULARITY (mm)	PLANENESS (mm)
35	600	600	12.0	56*	≤2	≤3
(+/-1.5)	(+/-1)	(+/-1.5)	(+/-10%)			

*600×1200 mm pallet

FURTHER INFORMATION

On www.troldtekt.com you can read more about Troldtekt products. You can also download the most recent version of these

installation instructions and see the complete range of Troldtekt installation instructions.



Troldtekt A/S
Sletvej 2A
DK-8310 Tranbjerg J
Tel. +45 8747 8100
Fax +45 8747 8111
info@troldtekt.dk

www.troldtekt.com