

About Triton Systems

The company holds British Board of Agreement approvals and is a BS EN ISO 9001 Quality Assured Company. Triton was represented on the technical committee responsible for drafting British Standard BS 8102 (2009) – the Code of Practice for protection of below ground structures against water from the ground – and supplies systems and products to meet the requirements of all three methods of waterproofing as defined by the Standard.

To support architects, surveyors and contractors, a full programme of training courses has been created including three RIBA approved CPD seminars on basement waterproofing and green/living roofs. More details can be found at tritonsystems.co.uk/training

Concrete Waterproofing Systems – Barrier Protection

The products described in this brochure are designed for the protection and waterproofing of new or existing concrete structures. The range includes in-depth crystalline waterproofers for new construction, surface applied coatings for existing concrete structures and products for dealing with construction joints, service entries and leak sealing. Typical areas of use include new and existing basements, underground car parks, swimming pools and lift pits. Certain systems can also be used to provide ground gas barriers.

Integral Waterproofing

Triton also provides a range of integral waterproofing additives and associated products to achieve waterproofing that conforms to BS 8102 (2009) Type B – Integral Protection. Further information can be found in Triton's brochure entitled 'Concrete Waterproofing Systems – Integral Protection' which is available on request or can be downloaded at tritonsystems.co.uk

Cavity Drain Systems

Triton supplies a range of cavity drain membranes to achieve waterproofing that conforms to BS 8102 (2009) Type C. Please refer to the separate 'Cavity Drain Systems' brochure.



Available for download at tritonsystems.co.uk:
Material Safety Data Sheets for all Triton products
A comprehensive library of technical drawings

TRITON TT55 WATERPROOF SLURRY

- Single component, polymer modified cement tanking system
- Suitable for walls and floors above and below ground
- Highly effective as a damp proof membrane
- Type A Barrier Protection as defined by BS 8102 (2009)

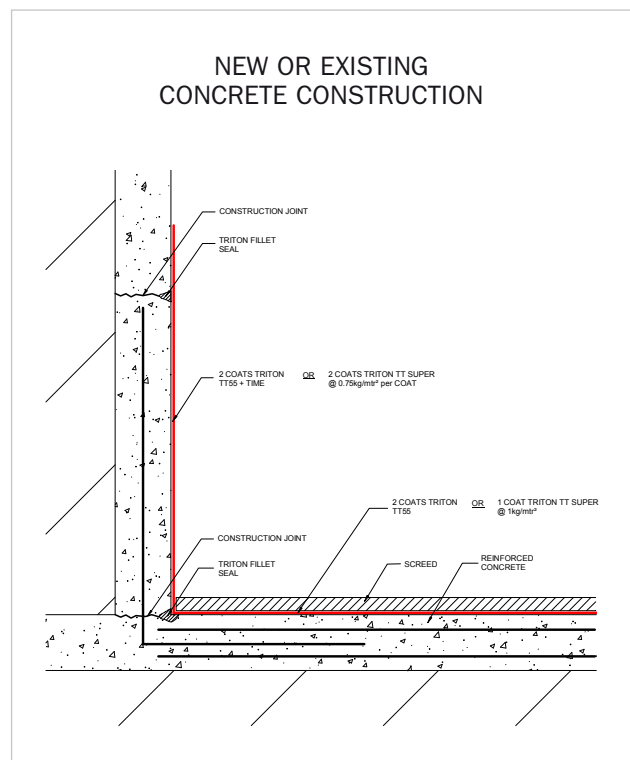
Triton TT55 can be applied to brickwork, concrete or any cementitious substrate. Surfaces to be treated with TT55 should be correctly prepared, free from all loose materials and contaminants and be in a sound and solid condition. For application to floors, TT55 should be applied directly to the structural slab. For masonry wall applications, TT55 should be sandwiched between sand/cement render coats. For concrete walls TT55 can be applied directly to the prepared concrete surface. Where additional flexural strength is required the addition of Triton SBR can increase the performance of TT55. Where movement/vibration is anticipated Triton TTME should be used. Triton Fillet Seal should be used when forming wall/floor junctions to help ensure a smooth transition between horizontal and vertical surfaces.

Specification:

In accordance with NBS Specification J10 Cementitious Mortar Tanking/Damp Proofing 110 Proprietary Mortar. Type A Barrier Protection in accordance with BS 8102 (2009)

Technical Data:

Mixed Density	2000 Kg/m ²
Open Time/Working Time	25-30 minutes at 20°C
Minimum application temperature	+5°C
Maximum application temperature	+30°C
Number of coats required	Two/Three
Compressive Strength	Minimum 30N/mm at 28 days
Adhesion	2-3N/mm
Colour	Grey
Availability	25kg bags or tubs



TRITON TANKING MIX ELASTIFIER (TTME)

- Plasticiser-free dispersion
- For use where vibration, cracking is anticipated

Triton Tanking Mix Elastifier (TTME) is a plasticiser-free dispersion designed to be mixed with Triton TT55 Waterproof Slurry to produce a flexible waterproofing coating suitable for either vertical or horizontal surfaces. It is ideal for areas that are liable to cracking or deformation of the surface, and can also be successfully used at wall/floor junctions.

10kg of TTME should be added to 25kg of TT55 and mixed thoroughly for approximately five minutes with a mechanical whisk. It can be applied by trowel, brush or mortar gun.

Specification:

In accordance with NBS Specification J10 Cementitious Mortar Tanking/Damp Proofing 110 Proprietary Mortar.

TRITON FILLET SEAL

- Wall/floor junction sealer

Triton Fillet Seal is a pre-packed, cement based and polymer modified product for use as a floor to wall junction seal during waterproofing works when using cementitious slurry coatings and renders. Fillet Seal helps to ensure a smooth transition between horizontal and vertical surfaces that minimises the risk of leaving gaps or holes unsealed during the waterproofing works.

Normally Triton Fillet Seal will only need to be mixed with clean water but where extra adhesion or flexibility is required Triton SBR or Triton TTME may be used respectively.

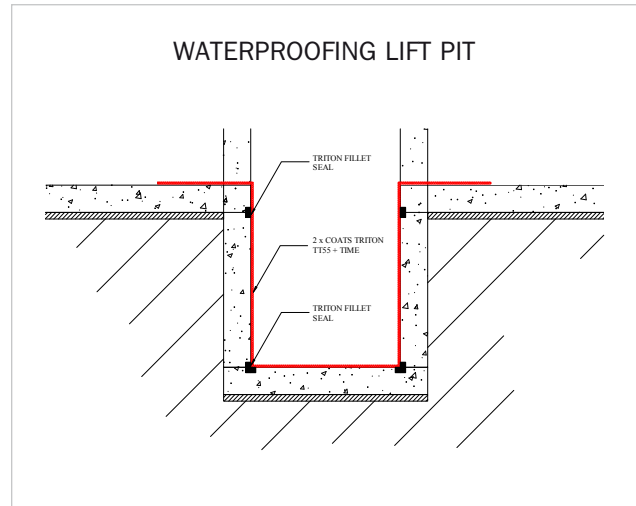
As Triton Fillet Seal is a non-shrink product it can also be used as a repair mortar.

TRITON SBR

Triton SBR is a latex admixture for cementitious mixes, renders, screeds and waterproof slurry coatings. Triton SBR improves the workability and durability of cement mixes, resulting in the cured material having a higher strength, density and water impermeability. Also increases flexibility and adhesive bond of a mix.

Specification:

In accordance with NBS Specification 10 Cementitious Mortar Tanking / Damp Proofing 120 Cement: Sand Mortar with Proprietary Waterproof Admixture.



TRITON TT VAPOUR MEMBRANE (TTVM)

- Fast drying waterproof and gas-proof membrane
- Single component
- Can not be punctured as fully bonded
- Easily repaired by locally overcoating
- Methane, Carbon Dioxide and Radon barrier*
- Suitable for use on ICF** structures

A multi-functional, ready blended coating that can be retro-applied as a waterproof and gas-proof* membrane to concrete, masonry and brick substrates, or as an alternative to sheet membranes in new construction. TTVM can be applied by airless spray, roller or brush to walls, floors and soffits.

Specification:

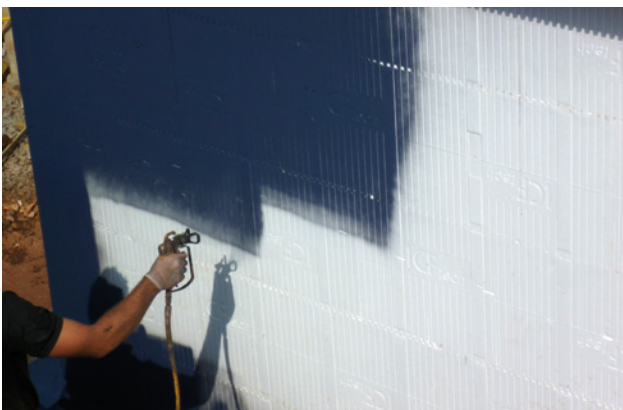
In accordance with NBS Specification J30 (Liquid applied damp proofing) 10, 130.

Technical Data:

Components	1
Form	Thixotropic Liquid
Specific Gravity	1.40 (approx)
Application Temperature	Plus 4°C
Toxicity	Non – toxic
Cured Properties	
Adhesion to concrete	>1.1N/mm ²
Elongation ASTM D2370 %	>100%
Tensile Strength ASTM D2370	11 N/mm ²

* Gas permeability test certificate available to download at tritonsystems.co.uk

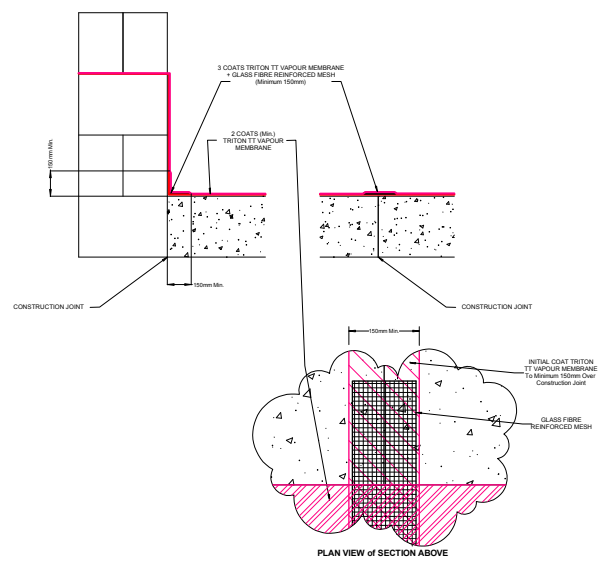
** ICF – Insulated Concrete Formwork



Spray application to ICF



TRITON TT VAPOUR MEMBRANE GAS BARRIER CONSTRUCTION JOINT DETAIL 2 (CO₂, METHANE & RADON)



TRITON TT SUPER

- Surface applied concrete waterproofer
- Allows structure to breathe
- Also used in pile cap sealing

A surface applied crystalline system that waterproofs and protects concrete in depth. Triton TT Super is supplied as a powder that only needs mixing with water before application. Suitable for use in basements, on retaining walls, concrete slabs, construction joints, water retaining structures, swimming pools, reservoirs, sewage treatment plants, channels and potable water tanks.

When applied to a concrete surface, the active chemicals combine with the free lime and moisture present in the capillary track to form insoluble crystals which block capillaries and minor shrinkage cracks and prevent any further water ingress (even under pressure). However the product still allows the passage of water vapour through the structure, allowing the concrete to 'breathe'. It also protects concrete against seawater, aggressive ground water and certain chemical solutions. Two versions of this product are available, please refer to the technical data below before specification.

Pile Cap Sealing System: Triton has developed in conjunction with Visqueen Building Products a pile cap sealing system using TT Super in conjunction with Visqueen membranes. The use of the TT Super to the pile cap, suitably sealed and linked to the sheet membranes, ensures protection to the pile cap and eliminates the sheet membrane through the pile cap and floor slab construction detail, thus eliminating the "slip plane" through this detail. Please refer to 'Triton TT Super Pile Cap Sealer Data Pack' which is available to download at tritonsystems.co.uk

Specification:

In accordance with NBS Specification J10 – 130
Proprietary Crystallization Active Mortar. Type A Barrier
Protection in accordance with BS 8102 (2009).

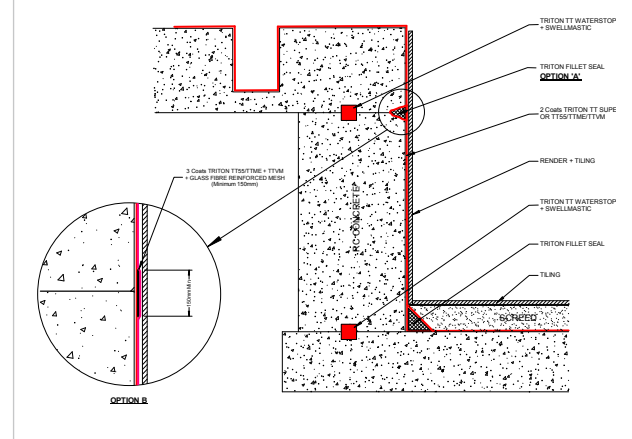
Technical Data:

	Triton TT Super	Triton TT Super (White)
Withstand water pressure:	> 12 bars @ 28 days	> 7 bars @ 28 days
Colour:	Cement Grey	White
Bulk Density:	Approx 1.25	Approx 1.20
Setting Time:	60 min	120-180 min



Triton TT Super can also be used in the repair of construction joints

TRITON TT SUPER + TT55/TTME WATERPROOFING TO CONCRETE SWIMMING POOL



TRI-SEAL

- Epoxy resin coating
- Solvent free, low odour

A solvent free, two part epoxy resin coating, typically used as a surface damp proof membrane and a water vapour suppressant. Well suited for use as a water and water proof barrier, beneath raised access floors, in plant rooms and bunded areas. It is also suitable for application on damp surfaces, such as sand/cement and cement floors subject to rising damp or containing residual construction moisture. Tri-Seal can be used as a general purpose coating for surfaces subject to foot and light wheeled traffic. Tri-Seal can be applied using a brush or medium pile roller on to sound, clean surfaces.

NB New concrete subfloors or sand/cement screeds should be left for a minimum of seven days to cure before applying this product.

Specification:

In accordance with NBS Specification J30 Liquid Applied Damp Proofing 10 Cold Applied Damp Proofing. Type A Barrier Protection in accordance with BS 8102 (2009).

Technical Data:

Composition:	Part 1: Low viscosity epoxy resin, reactive diluents, flow promotors and oxide red pigment. Part 2: Low viscosity epoxy curing agent and accelerator.
Mix Ratio:	2 parts resin to 1 part hardener by weight.
Curing Time:	@ 20°C re-coatable in 6-8hrs. @ 10°C re-coatable in 14-20hrs. Full cure is achieved up to 7 days after application depending on temperature.
Coverage:	1st coat 3-4m ² /kg @ 200 micron film thickness. 2nd coat 4-5m ² /kg @ 200 micron film thickness. Moisture vapour suppression is maximised when the total coating thickness is 400 micron or over.
Colour:	Red Oxide



Tri-Seal used as a surface applied waterproofer to car lift shaft

TRITON QUICK SET (TQS)

Triton Quick Set is a single component, cementitious, fast setting plugging compound. When mixed with water, TQS produces a material to stem water flow, but can also be used as a fast setting mortar repair.

Triton TQS is not a finish and should be overcoated with Triton TT55/TT Super or Triton TT Vapour Membrane.

