

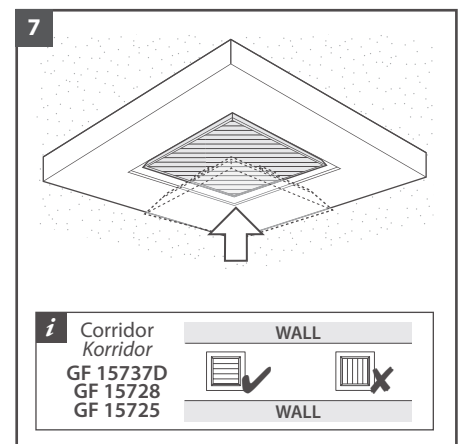
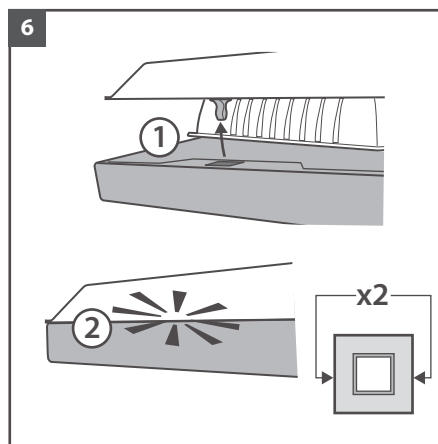
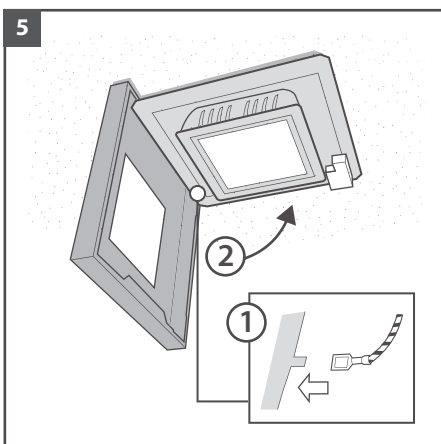
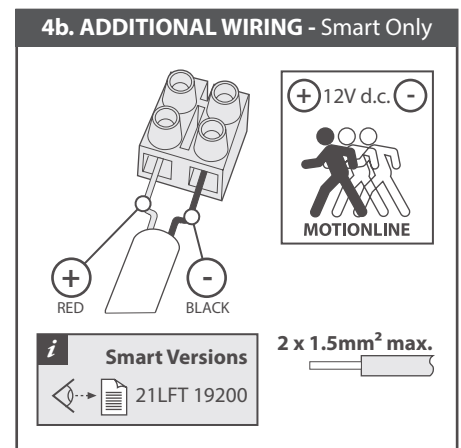
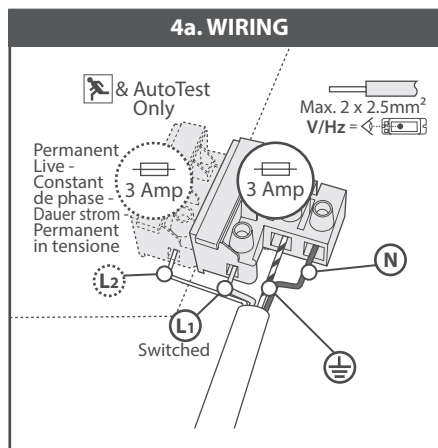
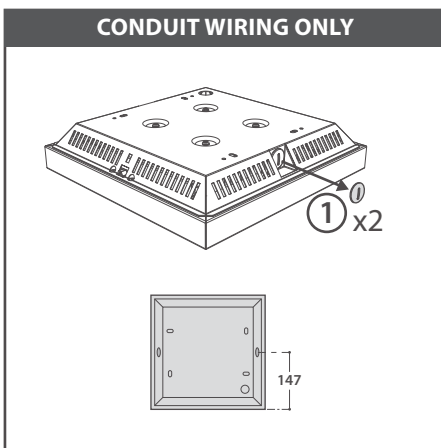
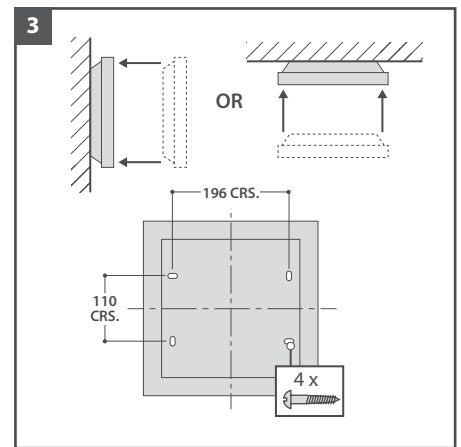
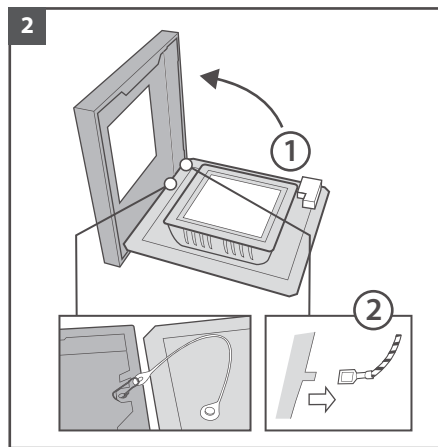
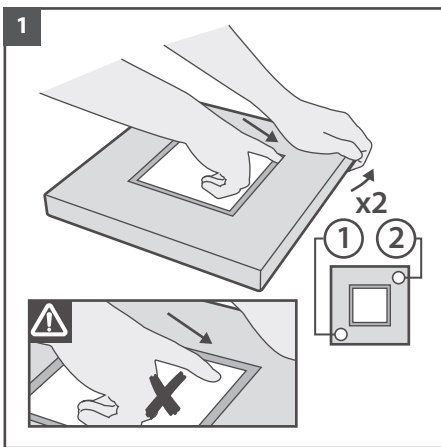
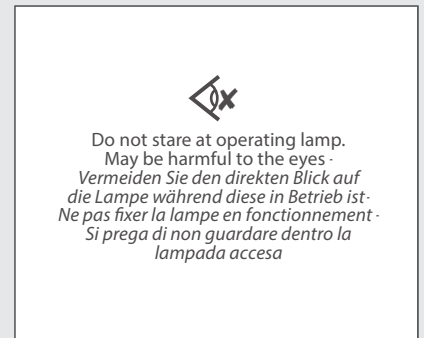
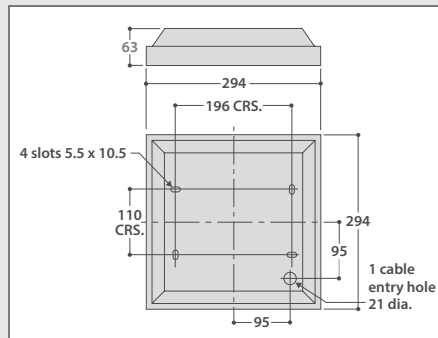
G4 Surface

16W & 32W LED - Corridor / Low Glare / General Area Versions - Korridor / Blendarm / Standard
Emergency, AutoTest Versions

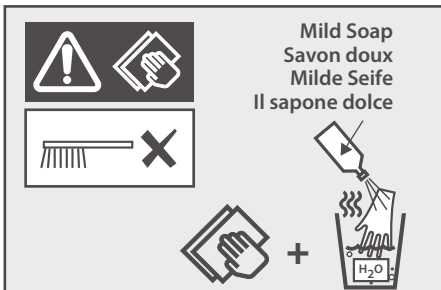
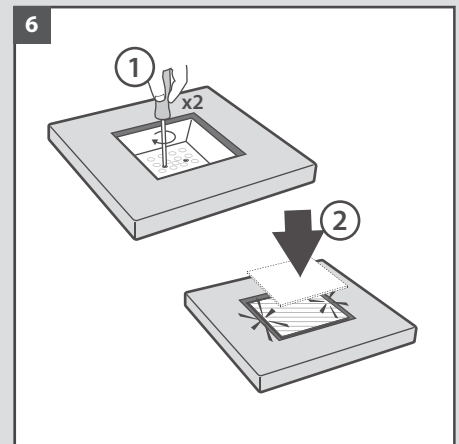
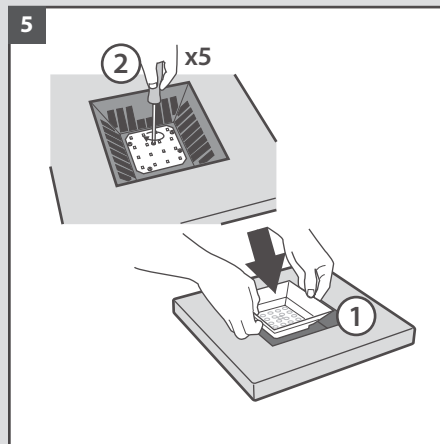
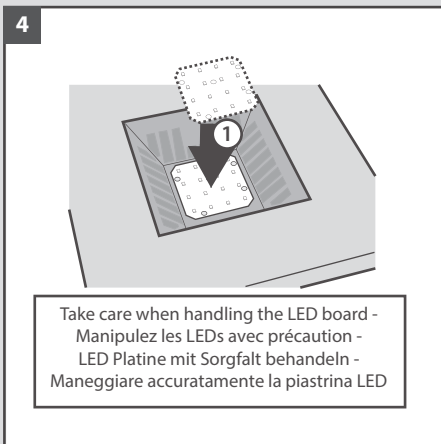
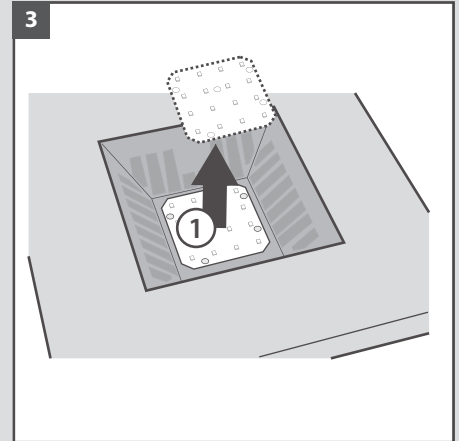
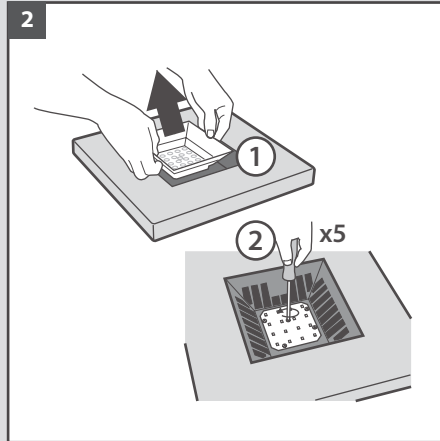
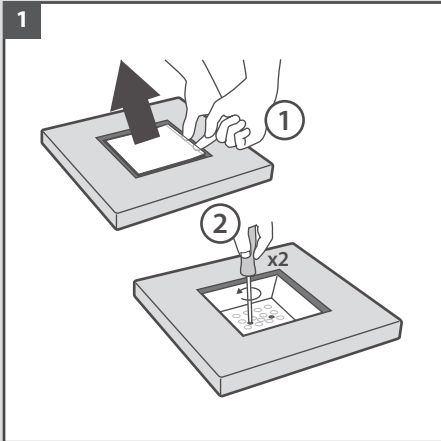
IP20

RANGE:	APPROX. Kg
16W 32W	2.7
32W SMART	2.8

Emergency, AutoTest and ScanlightAT Versions + 0.3kg



LED Replacement - LED Austausch - Remplacement des Led



Operation and Maintenance
The G4 LED Surface uses plastic components in its construction and when installed in environments containing chemicals, degradation may occur. Please contact our Technical Department for advice.

Modifications
Thorlux products should not be modified. Any modification may render the product unsafe and will invalidate any Safety/Approval marks. Thorlux will not accept any responsibility for any modified products or for any damage caused as a result of their modification.

Fonctionnement et Maintenance
Des composants en plastique ont été intégrés dans la construction du G4 LED Surface, et une certaine détérioration peut survenir lorsqu'il est installé dans des environnements contenant des produits chimiques. Veuillez contacter notre Département Technique pour obtenir de plus amples informations.

Modifications
Les produits Thorlux ne doivent pas être modifiés. Toute modification peut compromettre la sécurité du produit et annuler les marques de sécurité / homologation. Thorlux refusera toute responsabilité pour des produits modifiés ou pour tout dommage entraîné par une modification.

Betrieb und Wartung
G4 LED Surface-Produkte enthalten Kunststoffteile; bei einer Installation in Umgebungen, die Chemikalien enthalten, ist ein Qualitätsverlust nicht auszuschließen. Unsere Technische Abteilung berät Sie gerne.

Änderungen
Thorlux-Produkte sollten nicht geändert werden. Jegliche Änderungen können die Produktsicherheit beeinträchtigen und machen Sicherheits-/Genehmigungskennzeichnungen ungültig. Thorlux übernimmt keine Verantwortung für modifizierte Produkte bzw. für Schäden, die durch Produktänderungen verursacht werden.

Funzionamento e manutenzione
Il G4 LED Surface è stato costruito con componenti di plastica e, se installato in ambienti che contengono sostanze chimiche, si può notare un degradamento. Per ulteriori consigli si prega di contattare il nostro reparto tecnico.

Modifiche
I prodotti Thorlux non devono essere modificati, dato che qualsiasi modifica potrebbe rendere il prodotto insicuro e invalidare ogni segno di sicurezza/approvazione. Thorlux non accetta nessuna responsabilità per prodotti modificate per danni causati quale risultato delle modifiche apportate agli stessi.

Important-Safety
Before carrying out any servicing on this luminaire, ensure that the mains supply is fully isolated.
Disconnect luminaire before insulation testing of the installation.

Important-Sécurité
Avant d'effectuer des réparations sur ce luminaire, vérifiez que l'alimentation secteur est coupée.
Débranchez le luminaire avant d'effectuer un essai d'isolement de l'installation.

Wichtiger Sicherheitshinweis
Stellen Sie vor Durchführen von Wartungsarbeiten an diesem Beleuchtungskörper sicher, dass die Netzstromversorgung vollständig isoliert ist.
Trennen Sie den Beleuchtungskörper von der Stromversorgung, bevor Sie die Isolierung der Anlage testen.

Importante - Sicurezza
Prima di eseguire la manutenzione, assicuriarsi che la rete elettrica sia completamente isolata.
Scollegare il prodotto prima di eseguire il test d'isolamento dell'installazione.

NOTICE TO CONTRACTOR - PLEASE PASS THIS LEAFLET TO THE END-USER



MERSE ROAD NORTH MOONS MOAT +44 (0)1527 583200 e-mail: thorlux@thorlux.co.uk
REDDITCH WORCS B98 9HH ENGLAND Fax: +44 (0)1527 584177 Web: www.thorlux.com
Deutschland: www.thorlux.de | Ireland: www.thorlux.ie | Australia: www.thorlux.com.au
+49 (0)89 31881794 | +353 (0)1 460 4608 | +61 (0)3 9338 1891

