

thermoboard

Step 1

Sub floors must be clean and level to ensure the boards interlock correctly and sit tightly into room corners.

Step 2

Start the installation in one corner of the room and work towards the opposite corner.

Step 3

Boards that are placed against the edge walls must have the interlocking overlap removed with a blade to allow them to sit flush against the edge walls / edge insulation strip. Edge insulation strip is not required where the rising walls are built with the Thermohouse Wall System.

Step 4

All ThermoBoards must be interlocked and fitted together tightly into rooms leaving no gaps to ensure integrity of the finished screed.

Step 5

Where practicable, use the off cuts from one room to commence the installation in the next room.

This is a short overview of the ThermoBoard installation. For further information, details and diagrams please consult the Thermohouse Technical Manual.

Contact Us

Phone: 0207 784 2075

Email: sales@thermohouse.co.uk

Website: www.thermohouse.co.uk



thermoboard

Step 6

The retaining “Mushrooms” / “Upstands” can be removed from the boards by manually twisting them off. This may be required to increase the strength of the outer edges of the screed and where pipes may need to run closer together e.g. near the manifold location etc.

Step 7

Piping should be laid in a ‘reverse spiral’ format for ease of installation and the optimum heat distribution of the underfloor heating.

Step 8

16mm pipes should be laid at 150mm centres. 20mm pipes should be laid at 200/300mm centres.

Step 9

Cover pipes with 30-75mm screed.

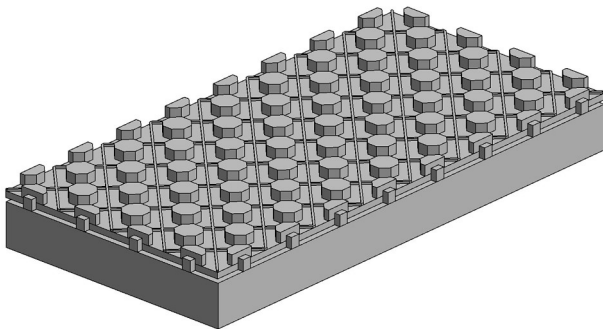
This is a short overview of the ThermoBoard installation. For further information, details and diagrams please consult the Thermohouse Technical Manual.



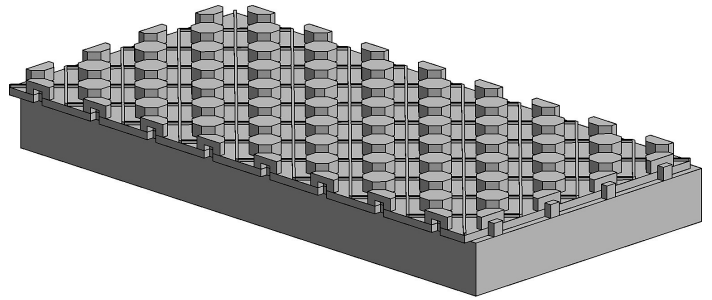
thermoboard

Figures 1-4

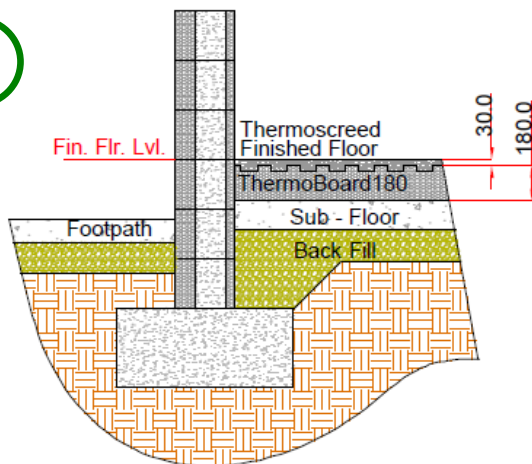
1



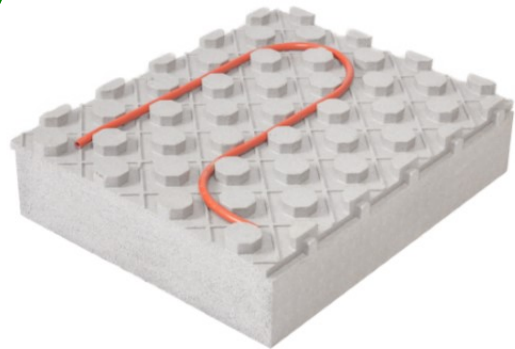
2



3



4



This is a short overview of the ThermoBoard installation. For further information, details and diagrams please consult the Thermohouse Technical Manual.

