

TSL-882

IR Sensor
Tap

The TSL-882 IR Sensor Tap features a sleek wall mounted spout with accompanying sensor housing and is available in a range of finishes.



CODES

TSL-882CS

TSL-882CP

TSL-882BK

TSL-882BR

TSL-882BZ

FINISHES

Brushed Stainless Steel

Brushed Copper

Brushed Black

Brushed Brass

Brushed Bronze

TECHNICAL DATA MECHANICAL

Body Material

AISI 304 Stainless Steel

Coating Type

PVD

Aerator

Cascade

Water Pressure (Dynamic)

0.5 to 7.5 Bar [0.05 to 0.75MPa]

Water Temperature (max)

60°C

Flow Rates

0.5gpm [1.9L/min]

Also available:

0.35gpm [1.3L/min] – refer to Spare Parts & Accessories

1.00gpm [3.8L/min] – refer to Spare Parts & Accessories

TECHNICAL DATA ELECTRICAL

| | |
|---------------------|--|
| Power supply | 110-230 Vac, 50-60Hz, 1.5A |
| Output (max) | 6 Vdc, 1A |
| Power consumption | < 87% Active mode, 0.3W No load |
| Solenoid valve type | 6V Latching |
| Water Ingress | IP55 |
| Cable lengths | 800mm – Power supply connection 800mm – Solenoid valve connection |

TECHNICAL DATA SENSOR FUNCTION

| | |
|-----------------------|---------------|
| Sensor type | Infrared |
| Pre-set sensor range | 220mm |
| Sensor range (max) | 250mm |
| Comfort delay | 2 sec |
| Security time-out | 30 sec |
| Operating Temperature | 0 to 50°C |
| Response Time (max) | 0.3 – < 1 sec |

INSTALLATION GUIDELINES

| | |
|----------------------------|---|
| Wall Cut-out Hole Size | Ø16mm (Spigot) Ø40mm (Sensor Housing) |
| Depth of Wall Cavity (min) | 100mm |
| Wall Thickness (max) | 50mm (incl. finishes) |
| Plumbing Connection | ½" BSP (female) brass fitting is required to connect to the solenoid valve housing |
| Power supply cable | To be hard wired in to fused connection unit (FCU) or spur |
| Water supply | 1.0 Bar is the recommended minimum pressure for the taps to operate effectively. 7.5 Bar is the maximum pressure for commissioning and is NOT recommended for general use. Gravity-fed systems may require a booster pump to achieve the optimal operating pressure All pipework must be thoroughly cleaned and clear of any debris before connecting the tap. |
| Washroom layout | Solenoid valve must be accessible for installation, commissioning and ongoing maintenance. Avoid installing the sensor tap directly opposite other sensor taps, soap dispensers, infrared devices or reflective surfaces. Careful consideration should be made when choosing the positioning of lighting and other reflective surfaces which may affect sensor performance. |

COMPLIANCE

BREEAM, LEED

WRAS

Pending

EMC compliance

Electromagnetic compatibility directive 2004/108/CE,
and Low Voltage 2006/95/CR

RELATED DOCUMENTS

Installation and maintenance manual

email: technical@thesplashlab.com

Warranty

2 years parts & labour. Contact technical@thesplashlab.com for more details

ACCESSORIES

PART NUMBER

DESCRIPTION

L260051

CACHE-TT AERATOR PCA SPRAY 0.35GPM

L260052

CACHE-TT AERATOR PCA LAMINAR 1.0GPM

L260053

STRAIGHT ADAPTOR (½" BSP FEMALE x ½" NPT MALE)

L230099

SENSOR WIRED CONTROLLER

L120020

DAISY CHAIN ENCLOSURE

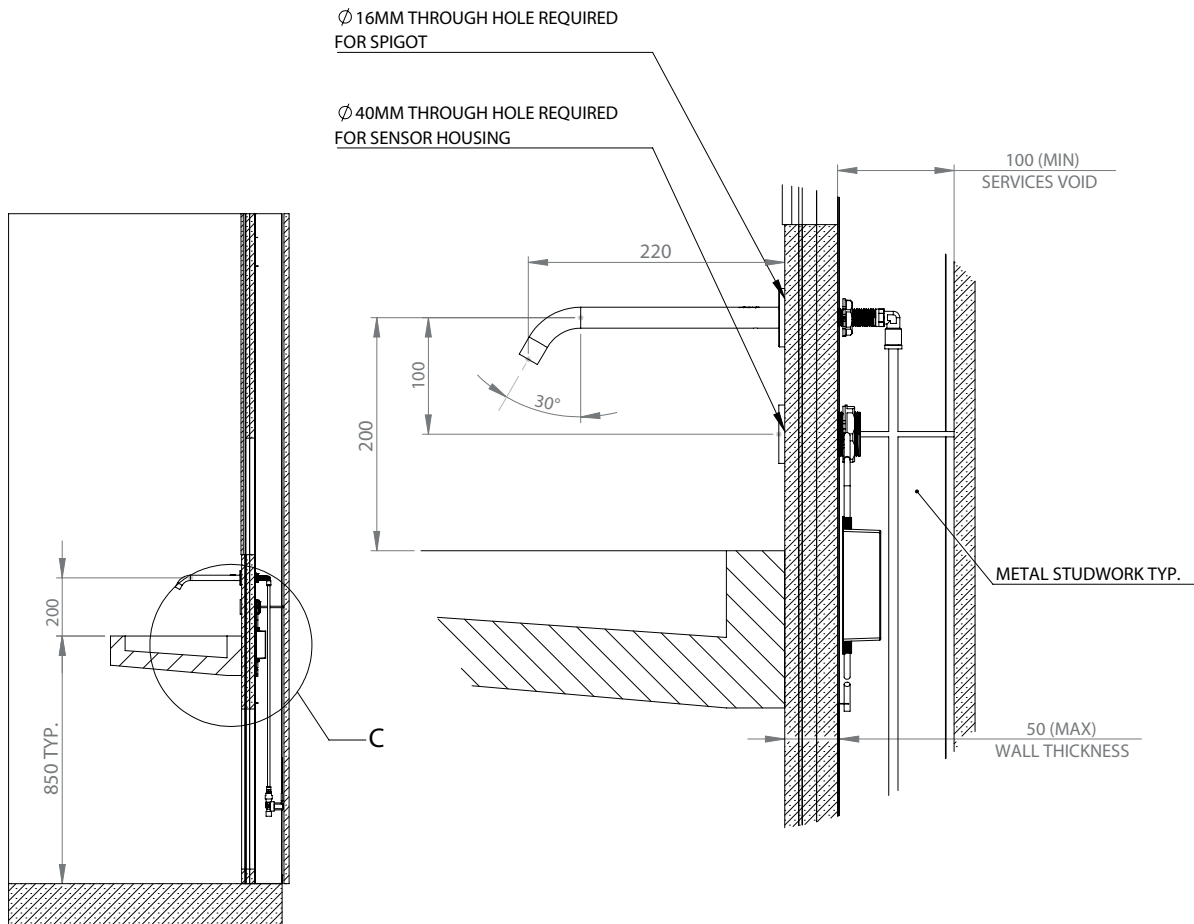
L120021

DAISY CHAIN CONNECTOR CABLE

TECHNICAL DRAWING

SIDE

DETAIL



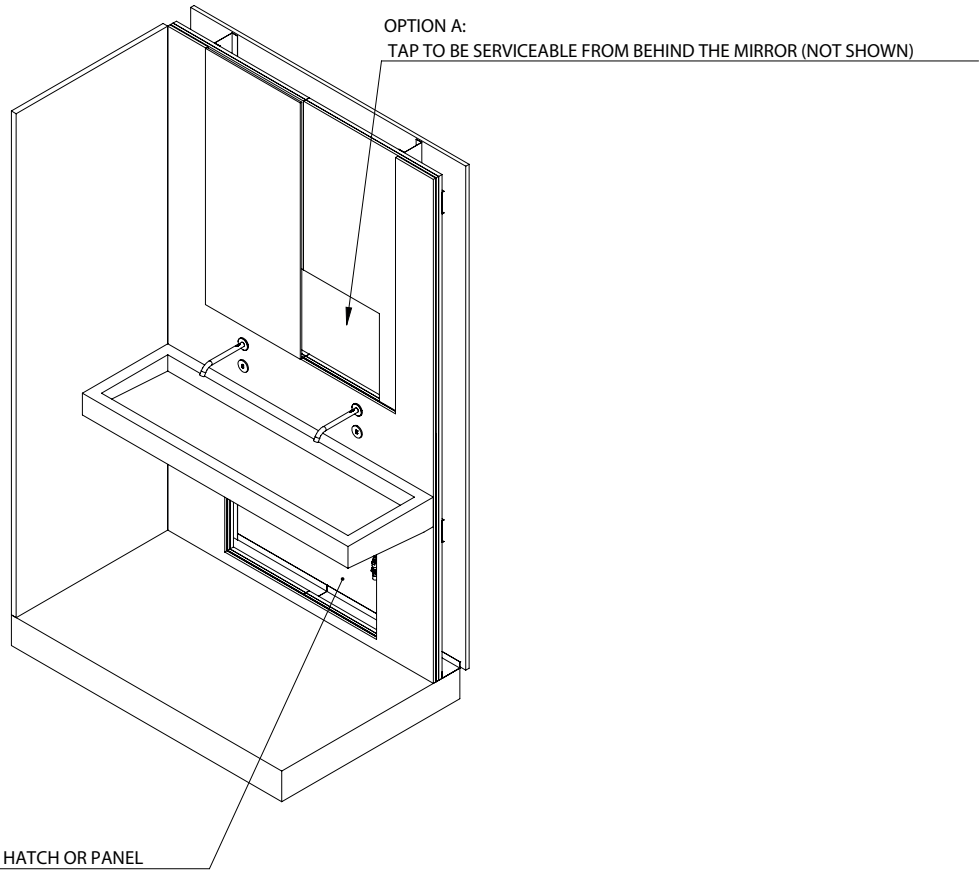
SECTION B-B

DETAIL C
SCALE 1 : 5

TECHNICAL DRAWING

VIEW

ACCESSIBILITY REQUIREMENTS



TECHNICAL DRAWING

