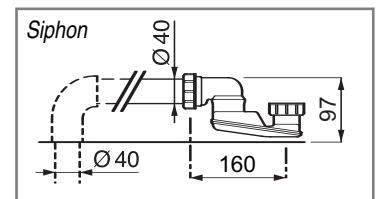


Example of installation with the bathtub fitted against the wall. If fitting the tub differently, add the distance of the tub from the wall to the measurements supplied.

- ☀ - Hot water connection for 1/2" tap fittings
- ❄ - Hot water connection for 1/2" tap fittings
- ~ - IPX5 box with PG13.5 cable clamp
- ELECTRICAL CONNECTIONS FOR SPA TUB
- ALARM SYSTEM CONNECTION

NOTE: Measurements must only be taken after completion of the walls and floor.



INSTALLATION OF THE BUILT-IN BATHTUB

Before building the perimetre walls, it is advisable to position the bathtub and make the necessary connections.

The recess between the wall and the external edge of the bathtub must be of a maximum of 1.5 cm.

A FULL-LENGTH REMOVABLE PANEL must be provided ALONG THE FRONT OF THE TUB, allowing inspection and ventilation of the whirlpool system.

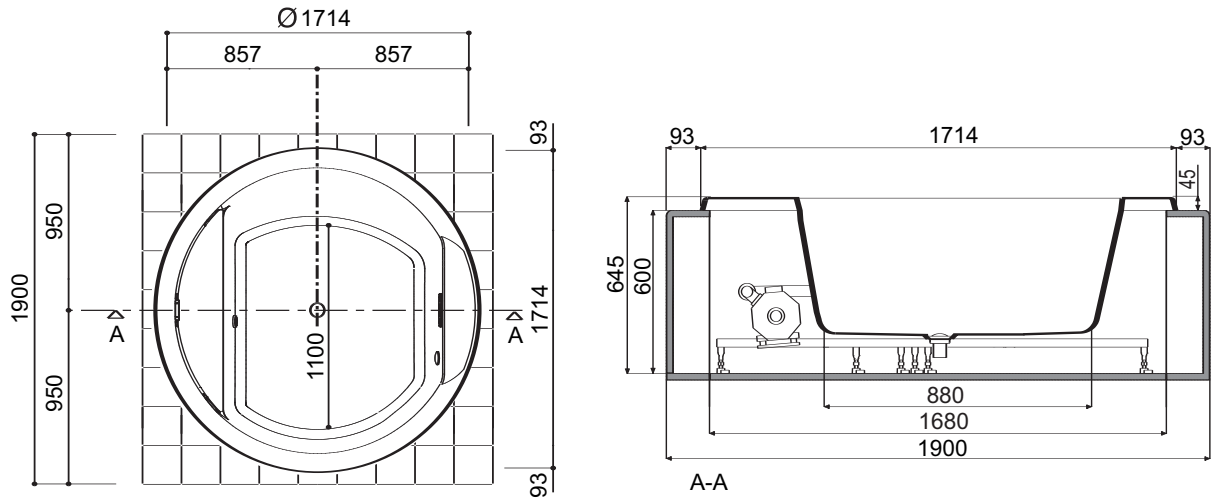
When making the panel, follow the dimensions indicated in the diagram.

The panel must be fastened securely in place (e.g. with screws) so that a tool must be used to remove it, as provided for by current safety standards.

ART. 554					HYDRAULIC CHARACTERISTICS			ELECTRICAL CHARACTERISTICS				
Net Weight Kg.	Water Content (1) lt.	Floor Load Kg/m²	Delivery Weight Kg.	Delivery Volume m³	Hydromassage			Art.	Whirlpool Art.	V	Hz	Installed Power kW
					Jets N.	Water Capacity l/m.	Air Flow l/m.					
96	400	310	156	2,87	8	400	280	TOP+hydrosilence	2WL128	230	50	1,4
								TOP+spot+heating+hydrosilence	3WLA28			2,6
								Blower+spot	1WLB28			0,6

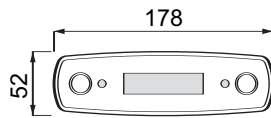
(1) - At overflow level

ART. 554

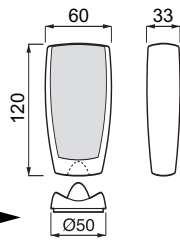


TOP

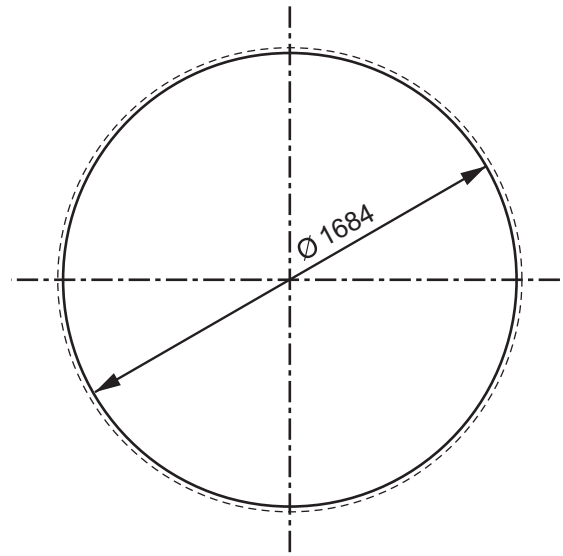
P - Electric Control Panel



S - Remote control
- Dispenser cap
(Ø 50)



CUTOUT FOR BUILT-IN BATHTUB



ELECTRICAL INSTALLATION

- The electrical power supply system must be in compliance with national statutory regulations.
- The appliance must be connected to the power supply by way of an isolating switch (I) with minimum contact separation of 3 mm, sited away from areas 0, 1, 2 and 3 (IEC 364-7-701).
- Make certain the appliance is connected to the power source by way of a residual current device with minimum threshold ≤ 30 mA.
- The electrical connection (\sim) must include a connection to the earth system and must be:
 - **permanent**
 - **able to handle the rated current (see data plate).**
 - **specified to liquids ingress protection category IPX5.**

EQUIPOTENTIAL BONDING

The appliance must be equipotentially bonded by making the connection to the terminal positioned at the base of the electric motor/pump unit.

CONNECTION FOR ALARM SYSTEM

The product is prewired for connection to the bathroom alarm system (open/close contact, voltage-free).

HYDRAULIC INSTALLATION

Prepare hot and cold water connections for water supply and the drain connection.

When the water from the main is hard water, the installation of a water-softener is advisable to ensure the efficient working of the hydromassage.

