

teknion architectural interiors



altos
portrait

form & function

Altos® is an innovative architectural wall system designed for maximum functionality while maintaining a clean aesthetic. Simple and efficient, Altos facilitates cost-effective reconfiguration or full relocation as required. Its unique universal framework allows changes in elevation, dimension, fascia function and finish to maximize the life of the product.

features

functional spaces

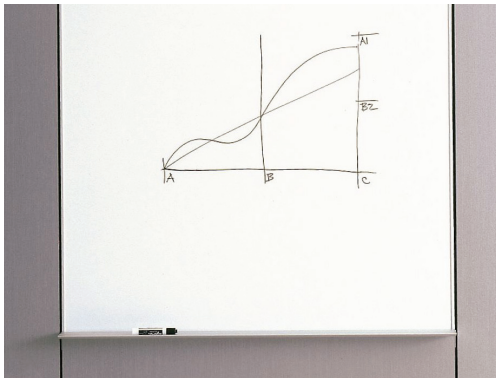
- Optimize your environment to get the most out of every surface. Altos Portrait offers an extensive variety of fascia, electrical and acoustic options - all available with Teknion's comprehensive finishes program.

return on investment

- Demountable fascias and accessories are easily reconfigured to keep up with the ever-changing needs of the workspace. Altos' systems approach and extensive leveling range open up possibilities for relocation to new floors or buildings.

quality spaces

- Altos is built to last and durable. Designed with clean lines to harmonize with building interiors, Altos' external cladding and internal steel frame are relevant both today and tomorrow.



specifications

sizing

- Ceiling heights from 96" - 120" high in 1" increments
- Fascia widths from 12" - 48" wide in 1" increments

building accommodation

- Ceiling adjustment range: + 1 1/2", - 1/2"
- Floor adjustment range: + 1 1/2", - 1/2"

fascia offering

- Solid, fabric-wrapped, tackable fabric, whiteboard, single and double glass fascias
- Compatible with Teknion's Architectural finishes program

door offering

- Hinged, Pivot and Barn doors
- Single and double leaf options available
- Common doors with Optos available

acoustics

- Glass STC ratings up to 46 STC
- Solid STC ratings up to 48 STC
- NRC ratings up to .85 NRC

glass options

- 6mm framed glass only
- Tempered and Laminated
- Clear, Low Iron and Frosted finishes

electrics

- Power and Data capability
- Hard-Wired and Modular connections

grain & fabric direction

- Vertical grain direction
- Off-the-bolt fabric direction



integration

- Drywall/base building
- Optos, Focus and Tek Vue