

Stainless Steel Soffit Vent Mesh is for use in new build properties. It is used over vents in soffits to allow air flow to prevent condensation but prevents access to birds and insects.

- Lightweight.

**SPECIFICATION**

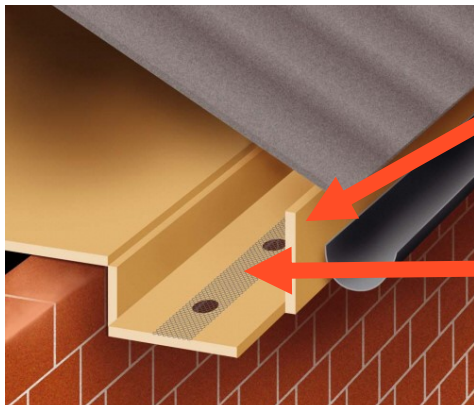
- Grade 1.4301 Austenitic Stainless Steel to EN 10088-2.

**INSTALLATION**

- Please see diagram below.
- Gloves should be worn as edges may be sharp.

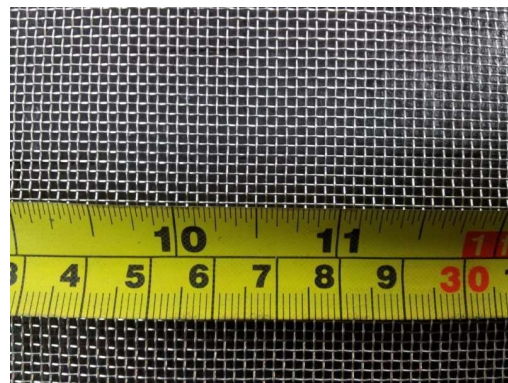


www.tecoproducts.co.uk



Soffit Vent Mesh is fixed over the ventilation holes to prevent birds and insects entering the roof void.

Ventilation holes in soffit.



Code	Product	Product Dimensions	
		Width (mm)	Length (m)
Stainless Steel			
SVM	Soffit Vent Mesh	75	30

☎ 01273 423 983    📠 01273 410 074    @ sales@tecoproducts.co.uk

TECO Building Products, Wellington Road, Portslade, Brighton, East Sussex, BN41 1DN  
 Ron Sammons Ltd. t/a TECO Building Products, Reg no. 1398336