

# Fire-resistant steel door

## T 30-2-FSA „Teckentrup 42“



### Text example

Compile and tender according to requirements.  
Please refer to technical data below for respective details.  
Updated 1<sup>st</sup> June 2015

Position	No. of pieces	Item	Unit price €	Total price €
		T 30-2 FSA fire-proof steel door tested in accordance with EN 1634-1 (DIN 4102). Double-leaf door element. Flush mounted door leaf without hinge stamping. Active door leaf DIN right. Door leaf 42 mm thick, rebated on 3 sides. Corner frame 2 mm thick, with 3-sided seal. Door leaf/Frame galvanized and powder coated, similar to RAL 9002 (Grey white). Active door leaf with mortice lock with latch lever in accordance with DIN 18250, prepared for profile cylinder. Black plastic handle set, handle pivoted on bearing, with tumbler insert (Bb) and 1 Bb key. Inactive door leaf with espagnolette bolt lock. 4 two-piece KO-hinges with ball bearings, 2 top door closer. 1 door selector. 2 Security bolts per leaf. „Teckentrup 42“ or equivalent.		



### Technical data

#### Building authority approval:

Z-6.20-1956 tested in accordance with **EN 1634-1** (DIN 4102) for installation in internal walls.

#### Installation in:

- Masonry min. 115 mm
- Concrete min. 100 mm
- Lightweight construction stud wall \* min. 88 mm
- Autoclaved aerated concrete
  - as per DIN 4165 min. 115 mm
  - reinforced type min. 115 mm
- Covered wood beams F60

\* min. ≥ F 30 as per DIN 4102 part 4 or in accordance with general building authority test certificate. For permissible walls refer to the installation detail tab.

#### Approved dimensions:

Modular dimensions:  
width: 1375 – 2250 mm  
height: 1750 – 2250 mm

#### Handing:

Active door leaf DIN right or DIN left

#### Door leaf:

double skinned, **thin rebated** on 3 sides  
Door leaf thickness: 42 mm  
Sheet thickness: 1 mm  
Security bolts per leaf: 2  
Insulation: mineral fibre board

#### Frame:

Corner frame 2.0 mm thick, with 3-sided seal and bottom sill. Frame fixed with 3 screws per side.  
Special equipment:  
block frame, counter or closed frame.  
• For installation in lightweight construction stud wall/autoclaved aerated concrete: counter frame or closed frame required.

#### Surface:

Galvanized and powder coated door leaf/frame similar to RAL 9002 (Grey white)

#### Hinges and closing devices:

- 2 KO-hinges with ball bearings per leaf
- 2 Top door closer DIN EN 1154
- 1 Door selector
- Compensation rings for height adjustment

#### Fittings:

Active door leaf:  
• Mortice lock with latch lever as per DIN 18250, prepared for profile cylinder  
• Black plastic handle set, handle pivoted on bearing, with tumbler insert (Bb) and 1 Bb key  
Inactive door leaf:  
• espagnolette bolt lock in the central rebate profile, upward and downward locking

#### Special equipment:

- Handle sets:
  - plastic
  - light metal
  - stainless steel
  - with short plate or rose escutcheon (various makes)
- Prepared for rose escutcheon
- Locks:
  - profile cylinder 30.5 + 30.5 mm
  - safety catch with safety catch handle on the opposite hinge side
  - panic locks
  - block lock (must be provided)
- Panic bar
- Top door closer DIN EN 1154
  - head assembly
  - with locking device
  - with smoke detector
- Integrated lock inspector (bolt contact)
- Integrated opening indicator (Reed contact)
- Hold-open devices
- Floor seals

	Ordering dimensions (modular dimensions) width x height	Clear passage size (corner frame) width x height
<b>Standard sizes:</b>	1500 x 2000	1430 x 1965
	2125	2090
	1750 x 2000	1680 x 1965
	2125	2090
(Special sizes: from 1375 x 1750 up to 2250 x 2250)	2000 x 2000	1930 x 1965
	2125	2090
	2500	2465
	2125 x 2125	2055 x 2090
	2250 x 2250	2180 x 2215

#### Further qualifications (special equipment):

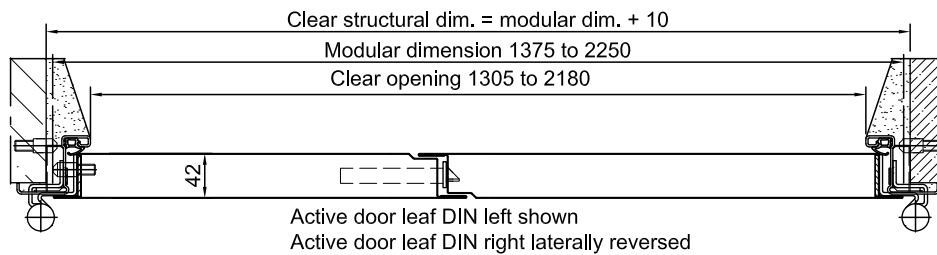
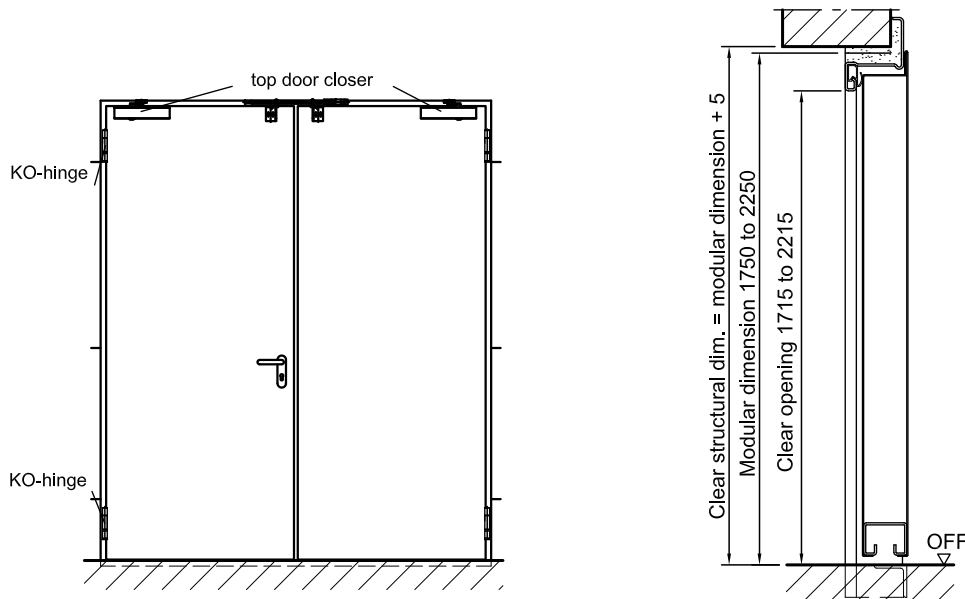


- **Smoke proof** in accordance with DIN 18095 for solid and lightweight construction stud walls



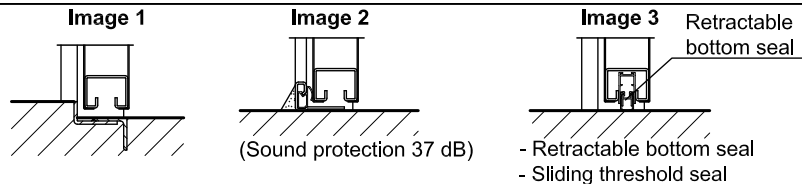
- **Sound insulation** as per DIN EN 20140/717-1  
**Rw 40 dB** with bottom buffer and seal  
**Rw 38 dB** with retractable bottom seal  
**Rw 38 dB** with sliding threshold seal

# Fire-resistant steel trap door T 30-2-FSA „Teckentrup 42“



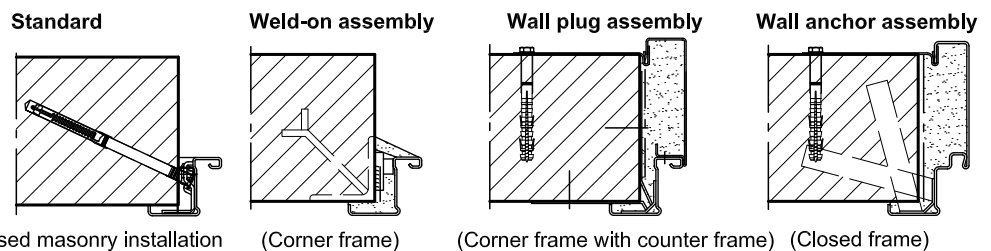
### Floor connections:

Image 1: With bottom buffer  
Image 2: With bottom buffer/seal  
Image 3: With bottom seal (smoke-proof door with top door closer)



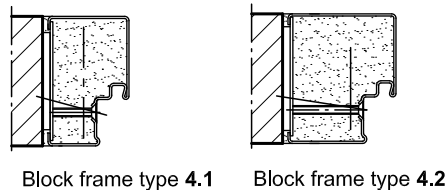
### Installation in masonry/ concrete walls

concrete walls  $\geq 100$  mm  
masonry walls  $\geq 115$  mm

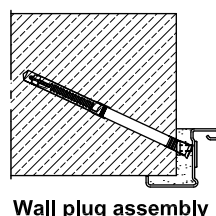


### Installation with block frame

Flush installation between concrete walls  $\geq 100$  mm  
masonry walls  $\geq 115$  mm



**Installation in autoclaved aerated concrete walls** (doors with top door closer) Made of autoclaved aerated concrete blocks or high precision units in acc. with DIN 4165 strength class 4 min. 115 mm or made of reinforced autoclaved aerated concrete slabs strength class 4. Wall thickness min. 115 mm



**Installation in lightweight construction stud walls** (doors with top door closer)  $\geq F30$  in acc. with DIN 4102 Part 4 or in acc. with general building authority test certificate. Wall thickness min. 88 mm. For permissible walls refer to the installation details tab.

