

## Sylan precision washrooms by Amwell

## Explore the beauty of Sylan...

Beautiful washrooms delivered through the finest materials, expert design, precision manufacturing and meticulous installation.

Every Sylan washroom is unique. Designed and built by craftsmen to your individual specification and precisely installed to interface seamlessly with all the elements of the washroom.



# surprising...

Choose from the finest materials. For a contemporary take on the traditional, select real wood veneer. Alternatively use stunning gloss finishes in any colour to transform the traditional into the modern with surprising results. Or combine and contrast finishes, tones and textures such as laminate and veneer for cubicle interiors and exteriors. Complement with beautiful quartz or polished granite vanity surfaces. Sylan cubicles can be FSC compliant.

Gloss finish up to 40% in any RAL colour.

© Amwell Systems Ltd, 2010

© Amwell Systems Ltd, 2010







Panel alignment with floor and skirting tile

Designed and built to your specification, every Sylan cubicle is precision manufactured using state of the art machinery. The same precision is evident as it is installed by our expert craftsmen, seamlessly interfacing with every element of the washroom.

Every cubicle detail is considered and it is that attention to detail that makes Sylan unique. For example, the division can feature a rebate to allow for a tiled or modern stainless steel skirt; alternatively a simple hardwood block raises the division 10mm off the floor. Other details include divisions that can be undercut along the lower front edge to create a floating appearance and invisible magnetic fixings hidden within each cubicle leave panels completely free of fixings. Panels and flashgaps can be aligned to work with floor and wall tiling or individual ceiling details, ensuring Sylan really can be anything you want it to be.



Division floor fixing with tiled skirt



Division floor fixing with stainless steel skirt



Division floor fixing on hardwood block

# precision...

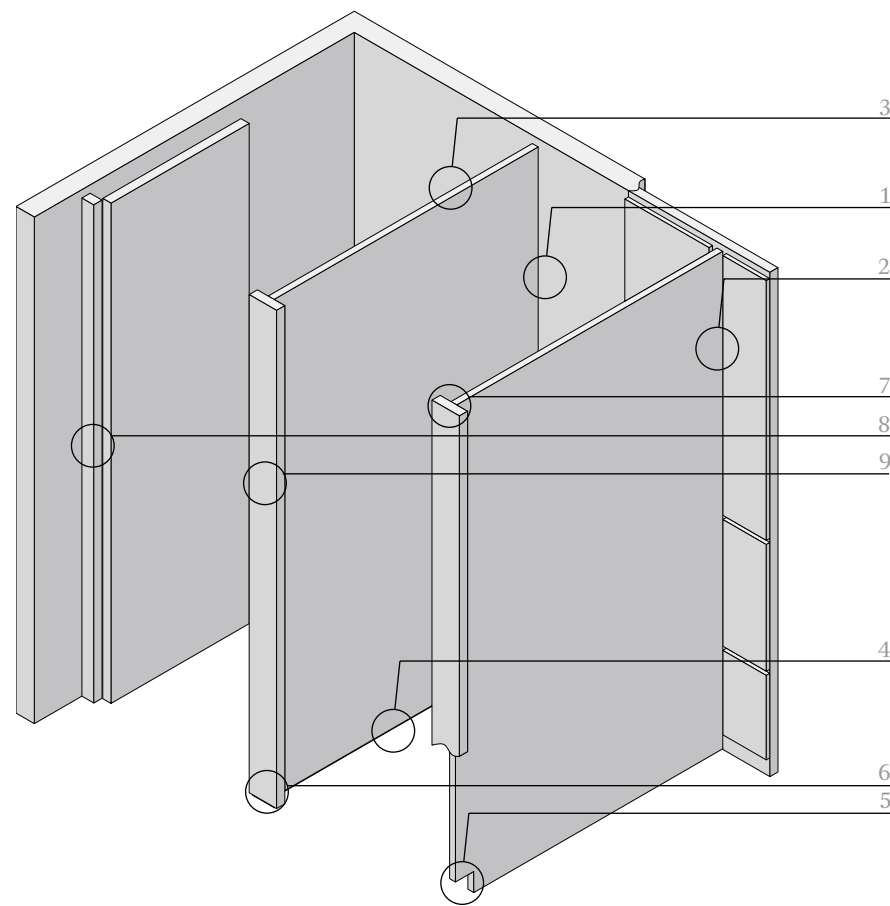


...anything you want it to be.

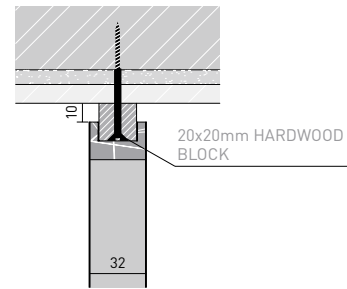
Sylan is about creating beautiful washrooms and specifiers and designers choose us to realise their washroom vision. At every step, from selecting materials and designing the individual layout of a washroom through to precision installation, you can specify with complete confidence.

Every project is different and Sylan, designed to be almost limitless in its precision, can adapt. Flexibility and design innovation is the cornerstone of Sylan's philosophy and, coupled with a dedicated team of tradesmen with more than 15 years experience in the creation of bespoke washrooms, your washroom vision is our reality.

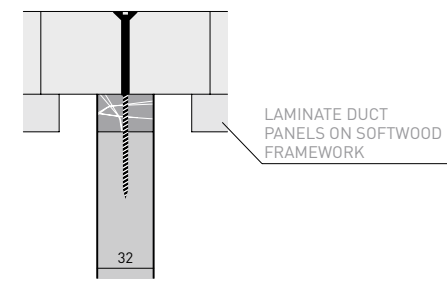
# Technical



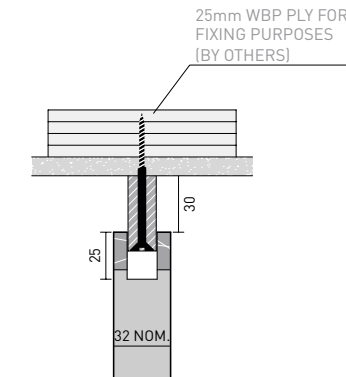
**1 Division to rear wall**  
Supported on screw fixed hardwood blocks.



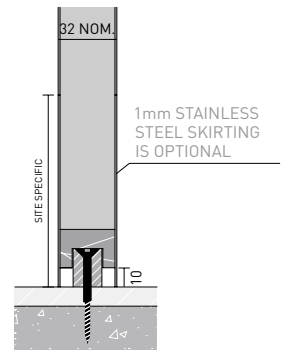
**2 Division to rear wall (Duct frame)**  
Supported using a coach screw fixed from rear through the duct frame.



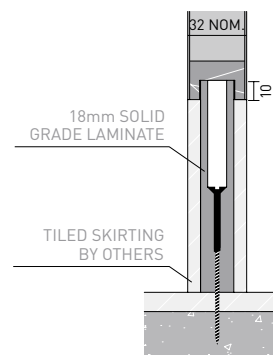
**3 Division to ceiling**  
Divisions are located onto a hardwood fixing block screwed to the ceiling (some ceiling finishes may require plywood fixing grounds).



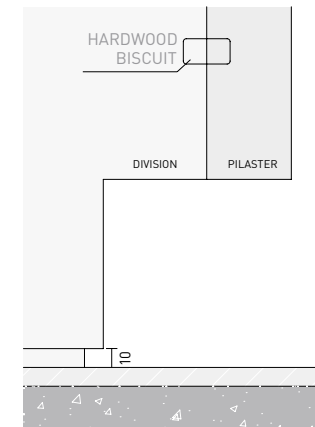
**4A Division floor fixing on hardwood block**  
A rebated stainless steel skirting option is also available. Standard floor fixing incorporates a hardwood block to raise division above floor and prevent water ingress.



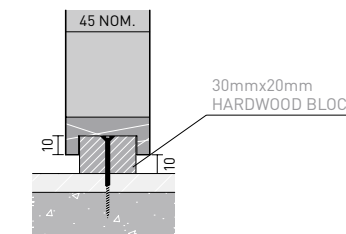
**4B Division floor fixing to take tiled skirt**  
Divisions are located onto a solid laminate block, suitable to receive tiling by others.



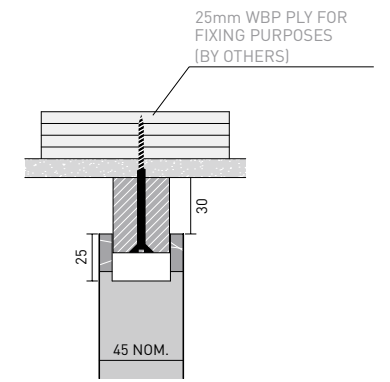
**5 Undercut division**  
Pilasters and divisions may be undercut to produce the floating appearance. This detail may also be used in conjunction with dry lined/block divisions to give the same effect.



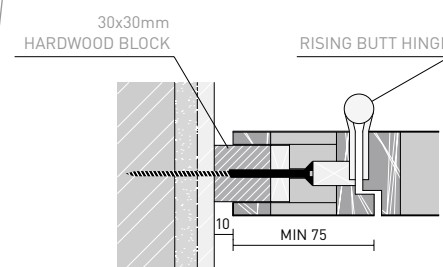
**6 Pilaster floor fixing on hardwood block**  
Pilasters are located onto blocks screwed to the floor.



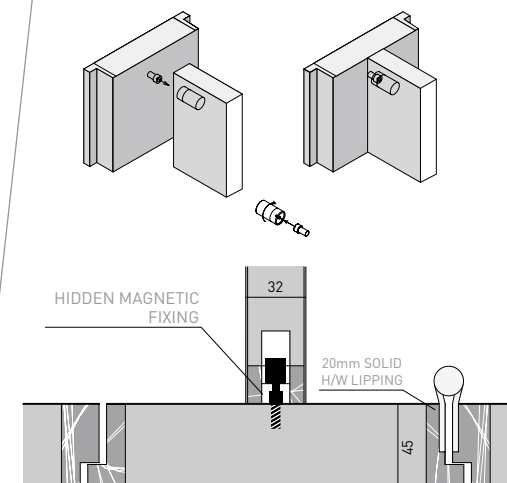
**7 Pilaster to ceiling**  
Pilasters are located onto a hardwood fixing block screwed to the ceiling (some ceiling finishes may require plywood fixing)



**8 Pilaster to wall**  
Pilasters are fixed onto hardwood block with fixings concealed by hardwood pellets. Suitable for most wall constructions/finishes including blockwork, tiles and plaster board (dry lined walls will require plywood fixing grounds).



**9 Pilaster to division**  
Pilasters are joined to the divisions using specialist invisible fixings, which do not disrupt the interior finish.



## Key

-  Hardwood fixing block
-  Hardwood lipping on chipboard core
-  Blockwork
-  Concrete floor
-  Tile
-  Plaster

Sylan | Anything you want it to be

## DDA

Sylan cubicles can be supplied to comply with the latest Building Regulations Part M\*.

## Delivering excellence

Sylan delivers excellence in quality, health and safety and our environmental commitment.

A fully certified Management System (BS EN ISO 9001) ensures excellence of product and service.



FM00784

Sylan cubicles can be FSC compliant.



All installers are CSCS registered.

Sylan cubicles are available on a supply only basis.

For further technical information and to view other Amwell washroom products visit [www.amwell-systems.com](http://www.amwell-systems.com)

\*It is the responsibility of the specifier/contractor to ensure compliance with the regulations and take into account your clients obligations to work towards the Disability Discrimination Act guidelines. We recommend you contact your Local Authority Access Control Officer.

© Amwell Systems Ltd, 2010

© Amwell Systems Ltd, 2010

[www.amwell-systems.com](http://www.amwell-systems.com)

Amwell Systems Ltd,  
Buntingford Business Park  
Baldock Road  
Buntingford  
Herts  
SG9 9ER  
England

T +44 (0)1763 276200  
F +44 (0)1763 276222  
[contact@amwell-systems.com](mailto:contact@amwell-systems.com)

Amwell reserves the right to alter or change specifications without any notice.  
Colours reproduced in this brochure are only as accurate as the printing process allows and may be affected by the washroom lighting.

© Amwell Systems Ltd, 2010