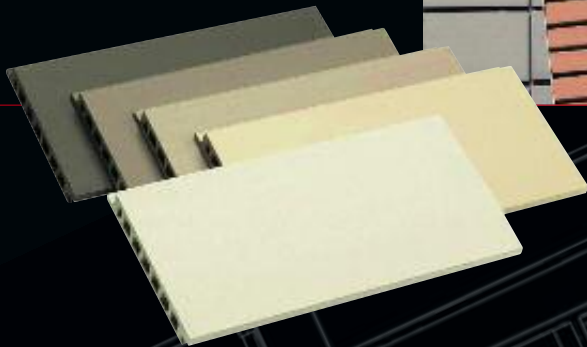
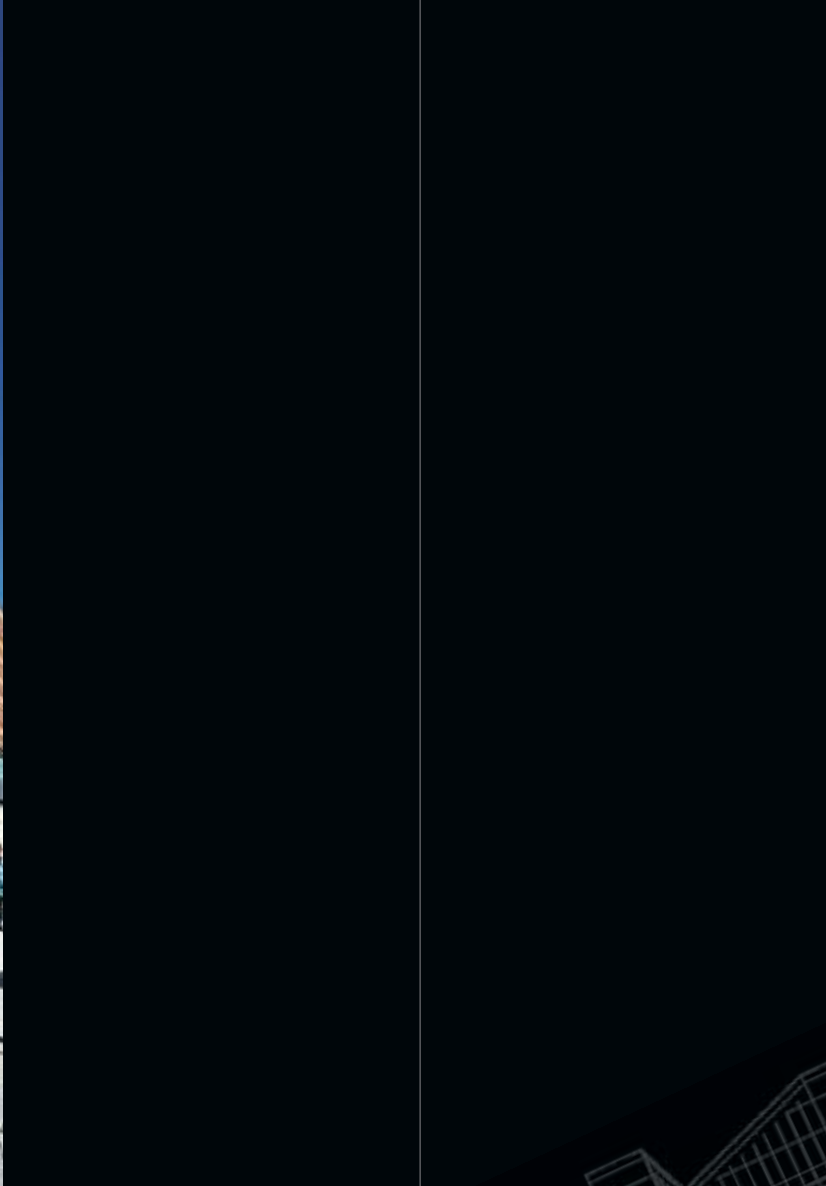


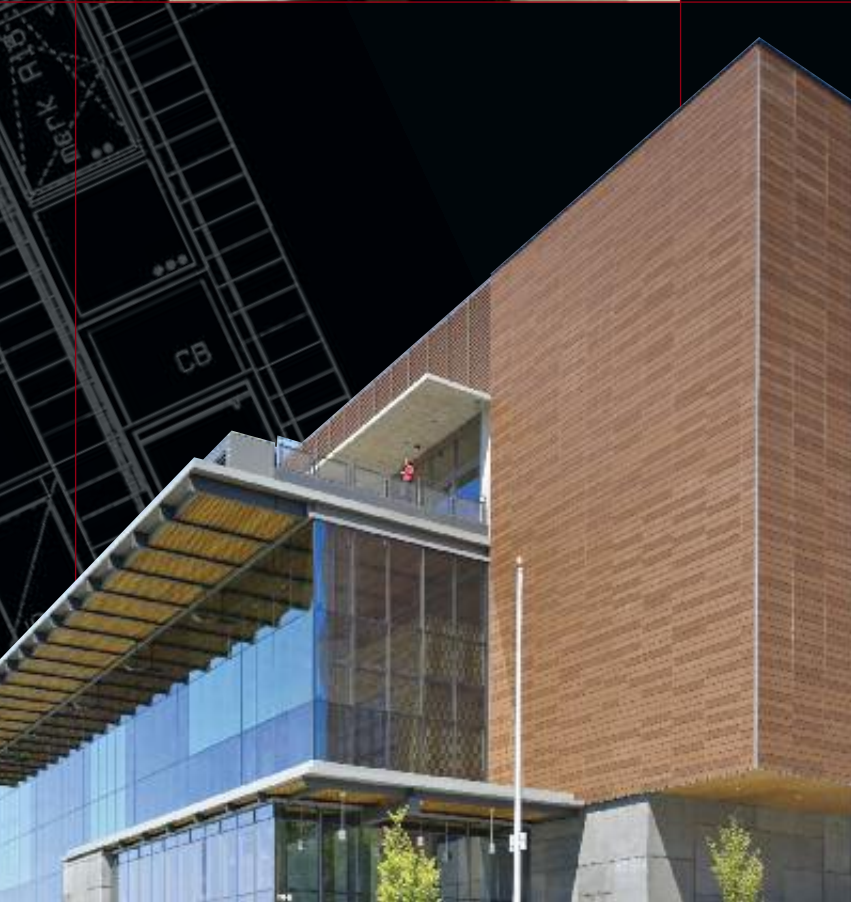


THE LIVING FAÇADE



## CONTENTS

A partner you can trust	2
Timeless perfection	3
Awareness and sensitivity	5
Lasting impression	6
Enlightened refurbishment	7
Captivating interiors	8
Architectural journey	9
Attractive options - creative scope	13
General Specifications	14
Focus on Technical Precision	15
Lightweight Steel Frame Walls	16
Barro: The ArGeTon® baguette sunscreen	19
Our promise	20



## A PARTNER YOU CAN TRUST

The visual impact of a timeless modern façade with the distinctive character of natural terracotta in a ventilating rainscreen. This was the specific inspiration for developing the ArGeTon® façade as a ventilated terracotta rainscreen in 1982.

Allow yourself to be inspired by a modern and international partner who has invested in unique purpose built production facilities for your benefit. Trust in our enterprising innovation, sales support, and the systematic quality assurance of a large group. The acquisition of ArGeTon® by the Wienerberger Corporation – the world's largest brick, clay block and tile manufacturers – had significant impact upon the versatility of range and finishes available from our manufacturing facilities. Their innovation in clay technology enables the ArGeTon® range to meet the demands for rainscreen façades using one of the oldest building products known to mankind.

A significant element of our becoming the UK's leading system has been built upon partnerships and personal contact. In keeping with this, you will continue to be advised in the creation of ArGeTon® façade tiles by experienced technical support. This will include technical details and advice upon economy of format for the façade. We have an innovative and practical solution for every project and look forward to your consultation and challenges.

There is international recognition of the benefits associated with rear ventilated cavity rainscreens for construction, from Europe to the North America, China to the Middle East and India. We are working with clients who are seeking the ultimate performance criteria of their façade sourced from a natural clay of sustainable source that meets the evolving demands for carbon neutrality.

ArGeTon® has held CWCT test certification for twelve years from the internationally accredited TayWood Laboratories in the UK. We maintain a continuing assessment policy with BBA upon the standard formats and thicknesses of ArGeTon® with 'special' profiles evaluated and tested for the individual project.

### **RAINSCREEN - PARTNER WITH US!**

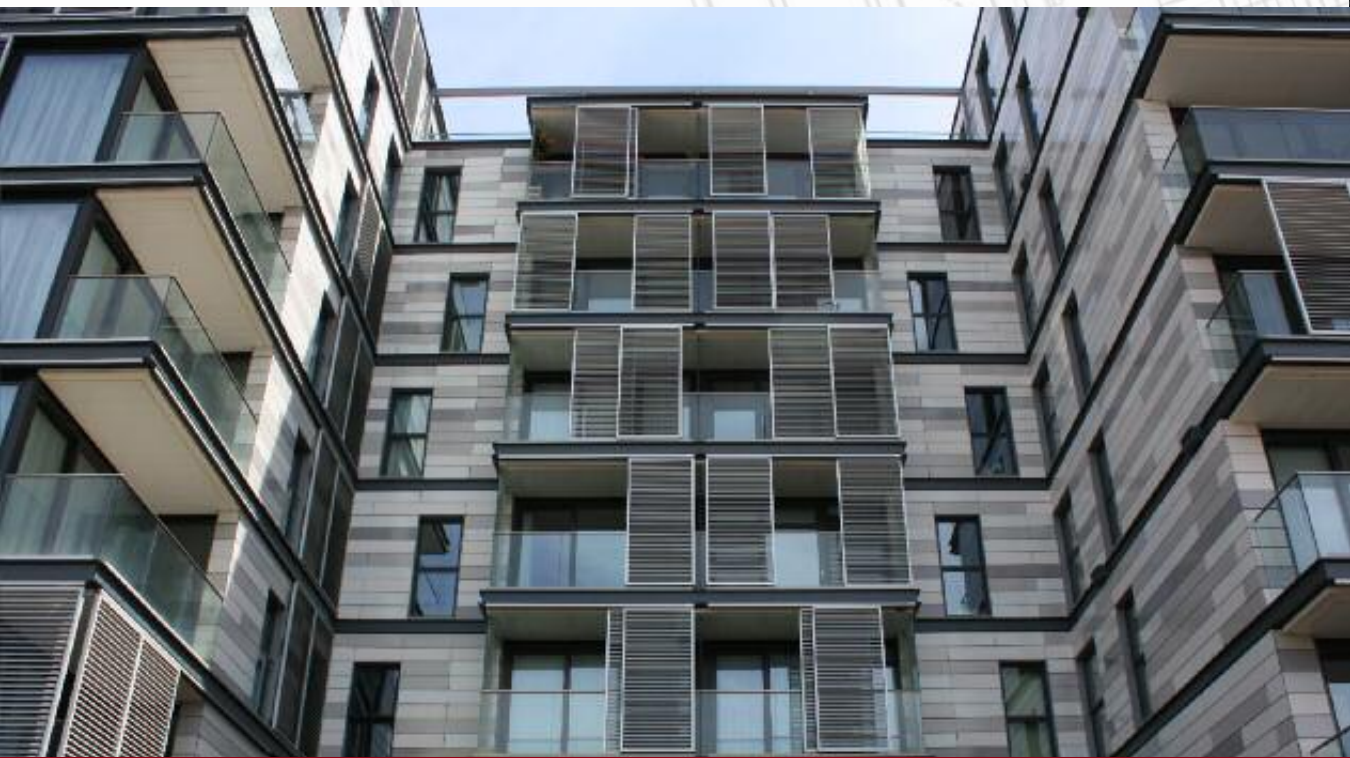
**A traditional building material manufactured with precision that can be combined with modern materials like glass and metal with demonstrative effect. This is the appeal of ArGeTon®.**

## **TIMELESS** PERFECTION

The ArGeTon® façade has created a union between natural tradition and state-of-the-art technology. It's appeal when combined with steel, glass and wood lies in its subtlety, symmetry, natural elegance and timeless perfection. Thus it is the ultimate finish for modern buildings and refurbishments. Compelling harmony is even achievable in locations with sensitive planning issues.

Façade cladding with modular plates of natural terracotta always results in sophisticated architecture whose unique design remains attractive and modern for many years.–

ArGeTon® accentuates the expressive architecture of these buildings. The 24 standard colours are ideal for the creation of bold features and an impressive overall theme. Ceramic glazing further expands the intensity of effect you seek to create in horizontal or vertical formats.



**Below:** The shades in the ArGeTon® standard colour palette were developed at the request of architects who desired amenable and vivid façades with which even large buildings can radiate a refreshing simplicity. Illustrated below are sand coloured tiles on the Hull History centre.



Do you seek your building's exterior to reflect its intrinsic function? Natural red (top), for example, makes a brisk and energetic impression.

Chocolate Brown (above) communicates a solid and trustworthy nature for the European Parliament Building in Strasbourg.





The subtle sand tile leaves the observer with a positive, fresh impression.



## **AWARENESS** AND SENSITIVITY

ArGeTon® combines technology and ecology with due regard to affordability.

It has become increasingly difficult to avoid synthetic components in today's market. Despite this, ArGeTon® façade tiles are made entirely from natural raw materials derived from a sustainable source to create a truly natural and pleasing effect.

Whether in a new building or refurbishment, an ArGeTon® façade provides tangible environmental benefits. The façade has excellent performance in fire, free from combustible components or neoprene gaskets. The vertical joint profile prevents lateral shift of the tiles and penetration of driving rain; its compression prevents rattling of the tiles.

The tiles pass are calibrated during production to ensure excellent dimensional accuracy - vital to the precise joint grid, essential for the overall impression of the façade.

ArGeTon® collaborate internationally with manufacturers of membranes, cavity fire barristers, insulation and aluminium to ensure compliance with international design codes to supplement the existing assessed design life of our system of 50-100 years by German institutes (in excess 35 years by BBA).





## LASTING IMPRESSION

An ArGeTon® façade retains an ageless aesthetic appeal. An innovative drainage concept minimises staining. The façade plates are colour fast and will not deteriorate even when exposed to adverse weather. The charisma of the façade will give you lasting and enduring pleasure.

Whether against a natural backdrop or in grey urban monotony, the red shades, here 'Brick Red', create symmetry and contrast.





## **ENLIGHTENED** REFURBISHMENT

The bespoke systems of support available to ArGeTon® ensure that tired and failing façades of the past can be transformed in to vibrant architecture that only the most discerning eye can detect is not newly built.

Thermal and acoustic upgrading, fire and weathering measures, fabric decay and remodelling of fenestration are all within the designed solutions offered by Telling Architectural. Our leading contractors hold the expertise to undertake multi-discipline façade refurbishment.

Below: Offices in Germany - before and after





## CAPTIVATING INTERIORS

ArGeTon® is a versatile and robust walling medium that can be adopted to create stylish and practical solutions for the interior designer. With the option to glaze the tiles to eliminate maintenance as well as to introduce features with brushed metal trims, there is no limit to the freedom of unique aesthetic impact.

**Left:** Reception to UK Medical Facility

**Below:** School Canteen Germany



Atrium in Irish offices



## ARCHITECTURAL JOURNEY



## INSPIRING AND CHARISMATIC

The expressive harmony that a building radiates is wholly reliant upon its façade. Cladding with natural raw materials and colour creates a building aesthetics that enriches its environment. A captivating contrast is created between the warmth of the terracotta tile and the clinical precision of the overall system.



ArGeTon®'s natural red range have a subtle and individual character. They offer fine nuances of earth or sand tones to the eye, which is accentuated by sunlight. The colour used here is Engobe Red.



Profiled and glazed white Argeton tiles, laid vertically, were used on this prestigious London project (above left). Glazed multi colours were selected on this Kings Cross Regeneration scheme (above right)



**Above: Glazed blue as a special colour.**

The everlasting attraction of the red range of tiles lies in the contrasts they create. Façades that are prominent against a blue sky, greenery at the base of a building or water features - colour and form seem more intense. This building is clad in natural red tiles (above left) and glazed white.



When using coloured components it is recommended that you choose grey shades from the ArGeTon® palette. The colours appear more vivid; but the building as a whole radiates tranquillity, safety and reliability.





Compelling contrasts are also possible with the varying colours. The specially blended brown tile combined with dark window frames creates an effect that catches the eye without being overpowering.



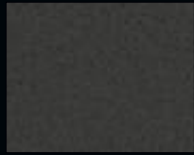
## ATTRACTIVE OPTIONS - CREATIVE SCOPE

The range of tile profiles, dimensions and finishes permits a design that expresses individuality of vision enabling tasteful co-ordination when combined with modern materials of steel and glass or traditional brick and timber. Subtlety, elegance and time-less perfection are attributes that permeate the entire range. The below are but a fraction of the profiles available in ArGeTon®

	TAMPA	TERZO			LINEO		DANZA	ArGeLite®	BARRO	ECKE	
centre to centre distance Axe des plaques Achismaß	TAMPA	TERZO	TERZO 1	TERZO 2	TERZO 3	LINEO 4	LINEO 9	DANZA	ArGeLite®	BARRO	ECKE
Grid Format Format 150 mm	● max. L = 600mm		● max. L = 600mm							● Ø 50/50 mm or 69/69 mm, max. length 1.500 mm	● 90/90 mm or 120/120 mm, max. length 600 mm
Grid Format Format 175 mm	● max. L = 600mm									● Ø 50/50 mm ou 69/69 mm, Longeur max. 1.500 mm	● 90/90 mm ou 120/120 mm, Longeur max. 600 mm
Grid Format Format 187,5 mm	● max. L = 600mm									● Ø 50/50 mm oder 69/69 mm, max. Länge 1.500 mm	● 90/90 mm oder 120/120 mm, max. Länge 600 mm
Grid Format Format 200 mm	● max. L = 1.200mm	● max. L = 1.200mm				● max. L = 1.200mm		● max. L = 1.200mm	● max. L = 800mm	● 150x50 mm max. length 1.200 mm 150x50 mm Longeur max. 1.200 mm	
Grid Format Format 212,5 mm	● max. L = 1.200mm									● 150x50 mm max. length 1.200 mm 150x50 mm max. Länge 1.200 mm	
Grid Format Format 225 mm	● max. L = 1.200mm	● max. L = 1.200mm		● max. L = 1.200mm	● max. L = 1.200mm					● 100x50 mm max. length 1.200 mm 100x50 mm Longeur max. 1.200 mm	
Grid Format Format 237,5 mm	● max. L = 1.500mm									● 100x50 mm max. length 1.200 mm 100x50 mm max. Länge 1.200 mm	
Grid Format Format 243,5 mm	● max. L = 1.500mm	● max. L = 1.500mm								● 100x50 mm max. length 1.200 mm 100x50 mm max. Länge 1.200 mm	
Grid Format Format 250 mm	● max. L = 1.500mm					● max. L = 1.500mm	● max. L = 1.500mm	● max. L = 800mm			
Grid Format Format 257 mm						● max. L = 1.500mm					
Grid Format Format 275 mm	● max. L = 1.500mm										
Grid Format Format 300 mm	● max. L = 1.500mm							● max. L = 800mm			
Grid Format Format 400 mm	● max. L = 1.500mm										
Grid Format Format 500 mm	● max. L = 1.500mm D = 35mm										



Apricot Beige



Basalt



Burgundy



Carrara White



Cream



Ferro Grey



Glacier Blue



Granite Grey



Light Brown



Bright Grey



Coffee



Salmon / Pastel Red



Light Grey



Natural Red



Pearl White



Platinum Grey



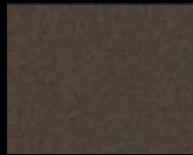
Red Brown



Sahara Yellow



Sand Colour



Chocolate



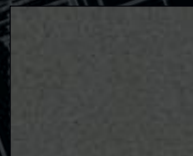
Silver Grey



Tizian Red



Tuscan Red



Volcano Grey



Volcano Black

## GENERAL SPECIFICATIONS

Thickness of tile: 30 & 35mm +/- 1.5mm  
Max. length: 1,500mm  
Max. height: 500mm

Argeton is available in a range of sections and profiles in both metric and imperial dimensions:

Tampa - smooth  
Terzo - deep groove  
Lineo - shallow groove  
Danza - bevelled  
Flute - castellated  
Tampa Barro - projection bands  
Sawtooth - fine drag flute  
Scalloped  
Orange Peel

Other sections upon request. Tiles may be laid in both a horizontal and vertical format.

The standard colour palette of 26 shades reflects contemporary nuances in façade design. Sophisticated firing processes and selected clays are key constituents in the production of the natural fired colours. Their outstanding feature is their quality and weather resistance.

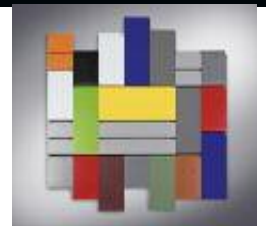
The 'engobe' process developed by involves the firing of liquid clay on the face of the tile and has made the creation of vivid colours possible. Engobing can be combined with matt, sheen or high gloss glazes with patination, metallic and iridescent effects all now proven in use. Creative power is in your hands!

### Finishes

Natural, 'engobe' and glaze in smooth, brushed, wire-drag, structure, orange peel, wave as standard. To get a true impression of the colours of the ArGeTon® façade tiles, please request sample façade tiles. Where pastel shades are desired on urban schemes it is recommended that clear glaze is considered to enhance the resistance of the façade to air borne dirt.

### Note

Due to the continuing development of the system some variants upon colour, size, profile and thickness may not fall within the BBA certification scheme..



## FOCUS ON: TECHNICAL PRECISION

The ArGeTon® process is internationally acknowledged as having been the pioneer of dual skinned extruded clay technology for rainscreens. Our modern production facilities, selected clay resource and quality management systems ensure unequalled tolerances and consistency of product that are a pre-requisite to create precision, low porosity and high impact resistance in the façade. The distinctive and variable joints and tile formats enable designers to create a distinctive variety of façade aesthetics with clay extrusion dies affordably made to produce the desired aesthetic.



## MASONRY WALLS - NEW AND EXISTING

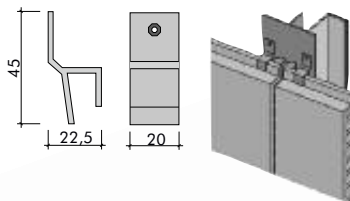
Aluminium substructure with vertical 'T' support rails and adjustable brackets

Aluminium brackets are fixed with approved fasteners along the horizontal axis of the support wall, spaced as structurally necessary. In this regard, attention must be paid to the design of fixed and floating points according to BSEN 1999-1-1:2007 + A2:2013 Eurocode9 OR USA 'Specification for Aluminium Structures Allowable Stress Design eighth edition, 2005.

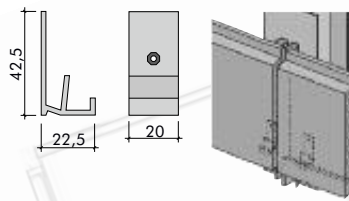
Vertical aluminium 'T' section support profiles are inserted into the brackets (a special receiver jaw enables exact adjustment). Once the support profile is aligned it is fixed with blind rivets or screws. The best results are achieved if the 'T' sections are pre-punched to the tile grid.

The ArGeTon® tiles are mounted on the substructure free of tension using self-tapping stainless steel screws or aluminium hollow rivets, and held in place at four points with proprietary clips. Tiling of the façade is undertaken from the bottom of the panel upwards.

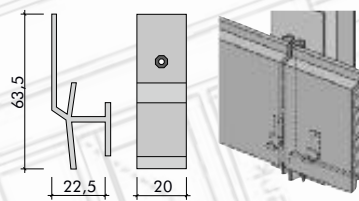
**Upper clip for ArGeTon® tile**



**Lower clip for ArGeTon® tile**



**Centre clip for ArGeTon® tile**



## LIGHTWEIGHT STEEL FRAME WALLS

### Aluminium substructure with horizontal rails and vertical 'top hat' sections

The demands of the industry for creative architecture, thermal performance, speed and versatility, increasingly lead to substantially different forms of construction. Telling remain at the forefront of lightweight steel framing systems primarily for a new building but also in remodelling where ArGeTon® transforms tired structures in to new vibrant architecture. Traditional cavity construction has substantially been replaced by methods that are lightweight, achieve improved energy efficiency and are versatile, fast and built to exacting tolerances. ArGeTon® meets all the above performance criteria as well as those of fire, acoustics, airtightness and weathering combined with a modern aesthetic.



#### Performance Criteria

Weight is an ever important factor. The systems will generally be less than 50kg/m<sup>2</sup> (11lbs/sq ft)

#### Speed and Versatility

Lightweight steel framing enables the structure to be made watertight within days of the frame construction. The walling can be used in traditional construction with the steel frame acting as a restraint system for stone or brick. By this process the external façade can be removed from the critical path of the programme.

#### Cost

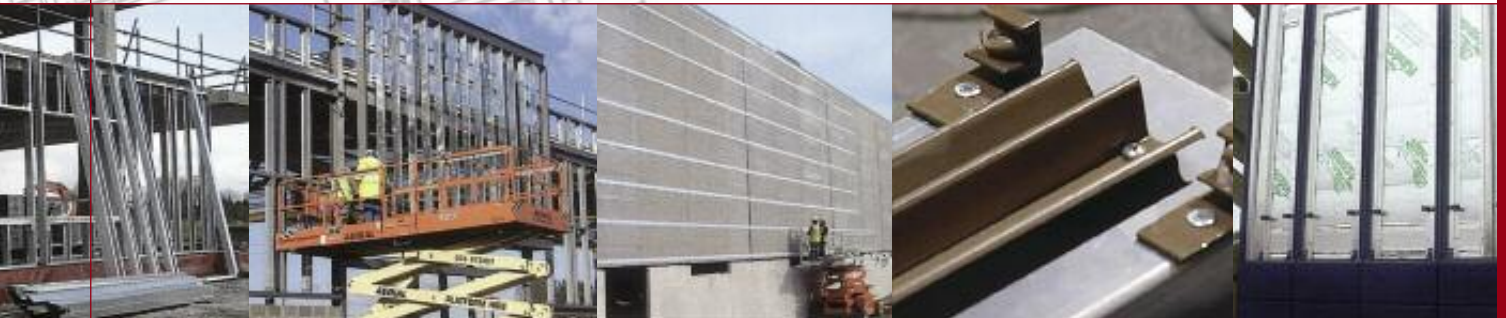
There remains the perception that masonry is cheaper than lightweight steel framing, but when site time, scaffolding, hoisting, weather delays and pressures upon trade skills are calculated, there is little difference.

#### Re-modelling

For re-modelling of buildings, to renew or replace the previous windows or structural glazing the lightweight steel walling provides a robust substrate for ArGeTon® overcladding. System built structures from the 60's and 70's are being extensively refurbished confidently in the knowledge that degradation is minimal upon a structure that is warm and dry for the remainder of it's life.

#### Loads and Fixings

Advancements in the fixings industry have enabled the systems to be designed to withstand the highest of wind loads and to provide support to interfacing elements of glazing and cladding.



## OFFSITE MANUFACTURE & PANELIZING

### Prefabrication

ArGeTon® can be used in all recognised construction forms. Our versatile and unique support systems enhance the flexibility available to the fabricator to complement their specific panel designs and meet all performance criteria. Speed of erection, construction without scaffolding, reduced weather delays and early enclosure are the primary attributes of panelised ArGeTon®. The support systems are interchangeable to suit specific design requirements for panel or unitised curtain wall installations and our in-house design team are available to provide assistance.

Whilst the demand for offsite manufacturing is expanding in Europe it is wholly established in the USA by companies who have geared their operations to providing these skills. Spacious and mechanised facilities with overhead cranes, metalworking and fabrication are combined with excellent finishing skills. An in depth awareness of the design technology for sealed and rainscreen applications is required to meet the varying building codes nationally and Telling Architectural are forging partnerships with contractors offering these techniques.

Where ArGeTon® is to be transported as a unitised curtain wall or with glazing incorporated in the panels, special skids are commonly prepared for road transport.

Off-site panelized walls will span continuously from floor to floor outside the line of the structural frame. Connections to the frame are bespoke to the specialist contractor and will combine brackets, angles and welded connections with provision made for structural deflections within weather sealed joints.



Unitised panels by permission of Benson Global for the Legacy Emanuel Children's Hospital in Portland Oregon.





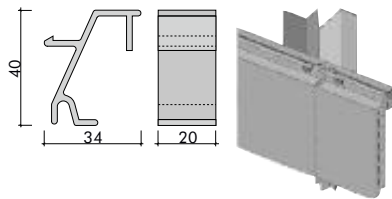
## CURTAIN WALLING

### Aluminium substructure with horizontal support rails

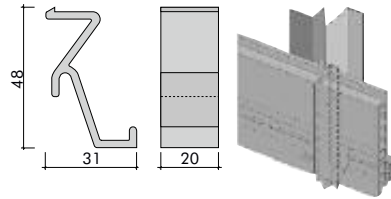
This support method is popular where ArGeTon® is to be installed on to a unitised or curtain wall system where the span of the vertical sections may be at extended centres. It may also be used where greater than normal projections from the structural wall are desired.

The substructure consists of vertical angle section support profiles fixed to the building by wall brackets. Horizontal aluminium support profiles are fixed onto the vertical support angle substructure. The spacing is determined by the selected height format of the ArGeTon® tiles, which are fastened to the horizontal support profiles using special clips. The maximum span of the horizontal profiles is 1.25m.

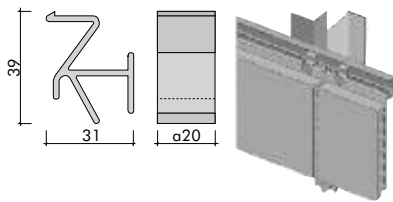
**Upper clip for ArGeTon® tile**



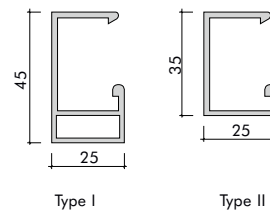
**Lower clip for ArGeTon® tile**



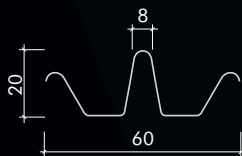
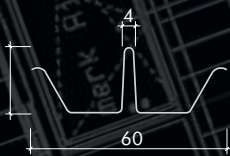
**Centre clip for ArGeTon® tile**



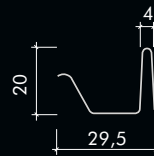
**Horizontal support rail**



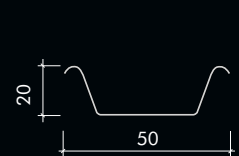
**Aluminium joint profile for ArGeTon® tile**



**Aluminium joint edge profile**

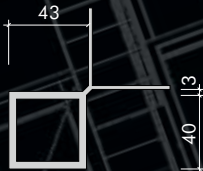


**Aluminium groove joint**



**Aluminium corner profiles for ArGeTon® tile**

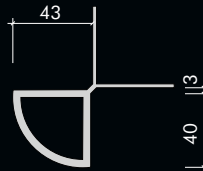
**Square Box**



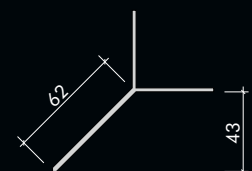
**Open Cruciform**



**Half Round**



**Corner Blade**

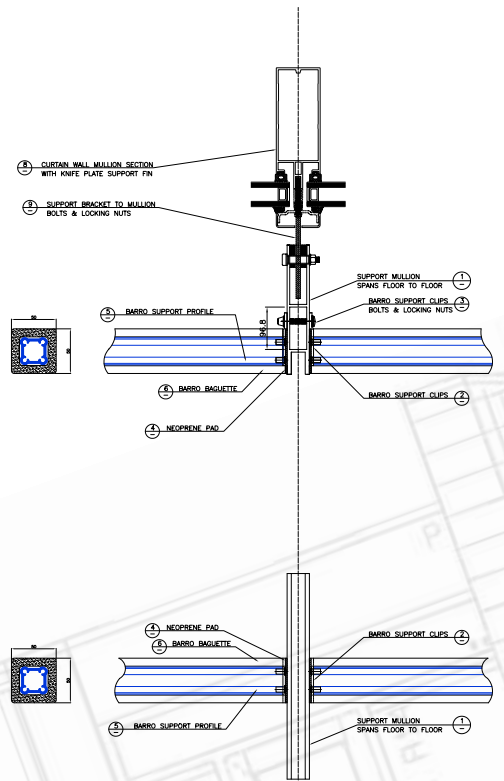
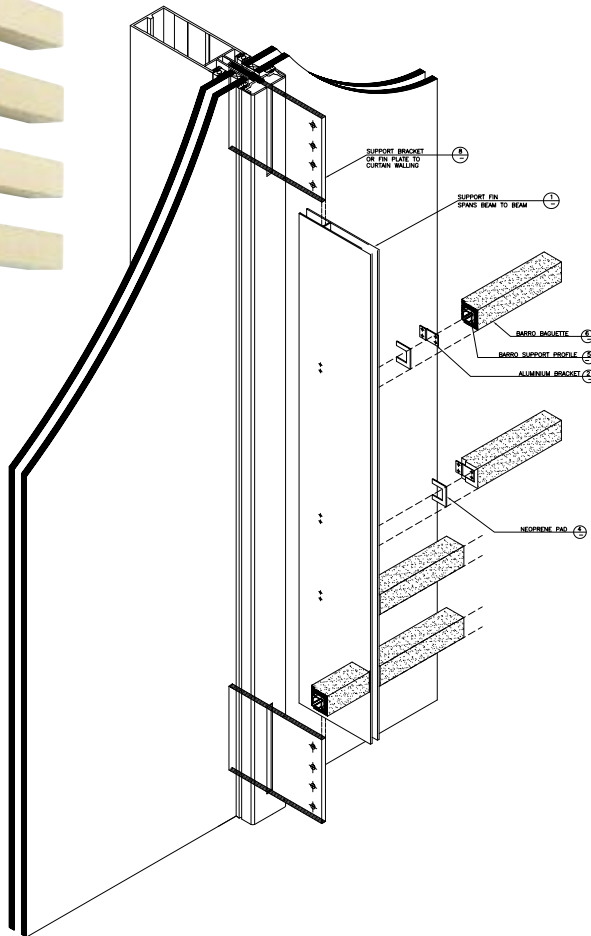


All figures in mm.

## BARRO - THE ArGeTon® BAGUETTE SUNSCREEN

The terracotta baguette system from ArGeTon® can be utilised for solar protection, as an effective ventilation screen with security against access or purely as a decorative element. The Barro Baguette offers captivating elegance within a functional element of the façade.

Barro is available in maximum lengths of 1800mm and in profiles including elliptical, rectangular and square. The Barro units are supported by continuous aluminum tubes mounted on vertical sections that can span floor to floor or attach to fins within the curtain wall mullions.



## Barro Colour Options

Created with the same precision and quality as the ArGeTon® Clay Rainscreens, the Barro is a versatile accessory that will complement many schemes. Available in the full ArGeTon® standard colour pallet, and special glazes, the Barro naturally combines with the modular tile system in both attachment method and design aesthetic.

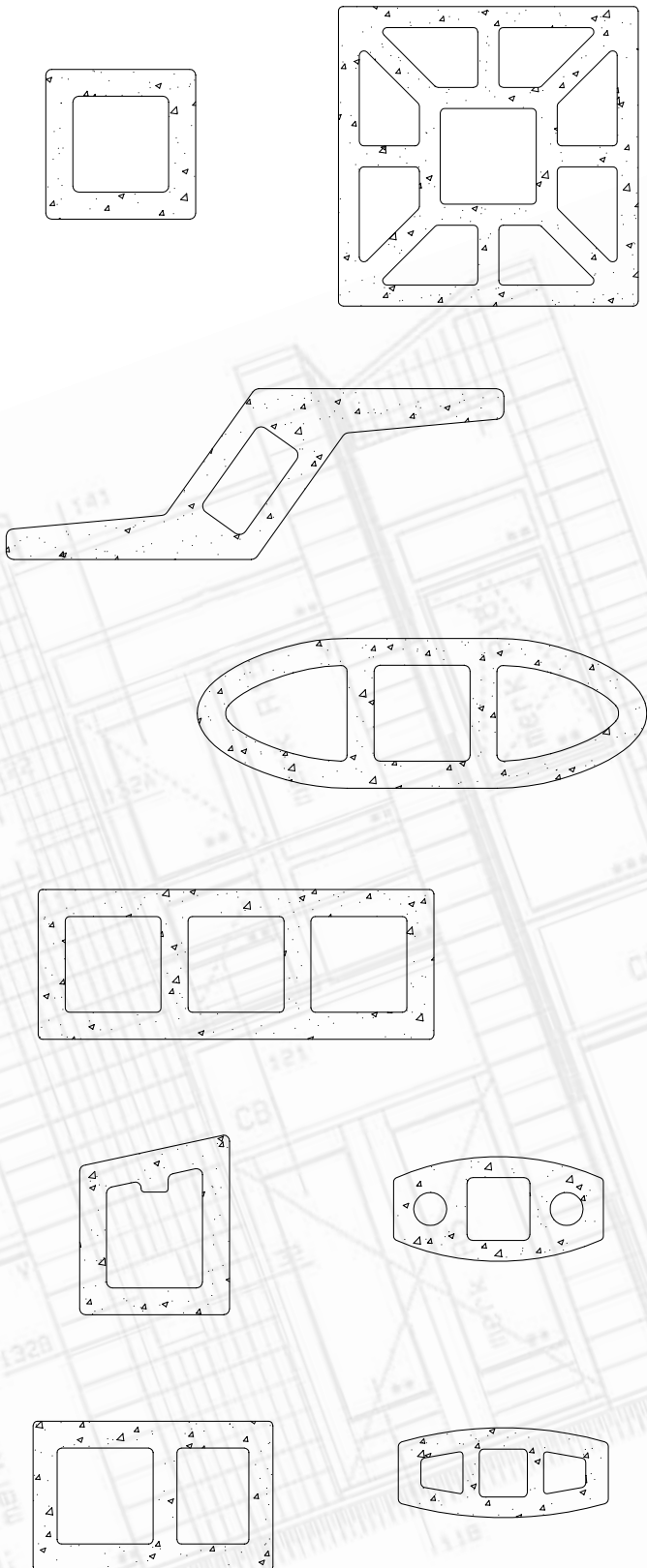


## OUR PROMISE

From selection of the clay through the different stages of production and on to the firing processes: great emphasis is placed on achieving lasting, weather-resistant quality. Numerous quality controls and regular test certificates go into ensuring this.

But we don't stop there, because the measure of our satisfaction and our continuing goal is to cater to your demands, wishes and ideas, to provide answers to your questions and to generate solutions before problems arise.

The driving force behind our daily work lies in our striving to surpass your expectations.





**Telling Architectural Limited**

7 The Dell, Enterprise Drive  
Four Ashes, Wolverhampton  
England, WV10 7DF  
T: + 44 (0)19 02 79 77 00  
F: +44 (0)19 02 79 77 20  
info@telling.co.uk  
www.telling.co.uk

**Design Studio**

Unit 129 Business Design Centre  
52 Upper Street  
London  
N1 0QH  
Tel. 02072886724  
Mob. 07885 965619



**USA Distributor**

**Telling Architectural Systems LLC™**

10 Worthington Road Suite K  
Cranston  
RI 02920  
USA  
T: +1 401 787 8551  
F: +1 401 632 4801  
info@tellingarchitectural.com  
www.tellingarchitectural.com

**UK Distributor**



**Taylor Maxwell Limited**

The Promenade  
Clifton  
Bristol  
BS8 3NY  
T: +44 (0) 11 79 73 78 88  
F: +44 (0) 11 79 70 66 52  
taylormaxwell@taylor.maxwell.co.uk  
www.taylormaxwell.co.uk



schneider-wa.de 06/07 / 5T

