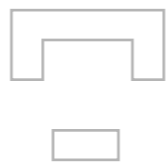
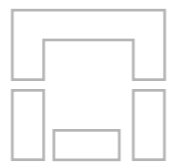
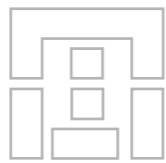


**TAPLANES**<sup>®</sup>  
SHOWERING SOLUTIONS



## Introduction

Established in 1979, Taplanes rapidly developed an enviable reputation within the industry by focusing on quality, reliability and client service.

Specialising in the field of plastics engineering, Taplanes soon became the first UK shower cubicle manufacturer to gain BS EN ISO 9001 : 2000 accreditation.

Today, the company is renowned for its expertise in providing modular showering solutions to a wide variety of end users throughout Europe.

- Robust
- Leak proof
- 25 year guarantee
- Reliable
- Hygienic
- Design Build



## Mini Pod®

Incorporating both a shower and drying area, the mini pod provides a completely waterproof and private environment in which to shower. Size, shape and specification details can be tailored to suit with both front and side entry models available. The mini pod is ideal for modernising existing communal showering facilities where privacy is essential.



## Cubicle

Available in one-piece and sectional format, the shower cubicles are ideally suited to both the new build and refurbishment sectors. Speed and ease of installation together with product reliability, ensure suitability to a variety of projects.



## En suite Pod

Designed primarily for the refurbishment sector, the sectionalised en suite pod can be manoeuvred into the most restrictive of locations with ease. The en suite pod is ideal for converting or updating existing student accommodation.

Recognising the need for a process of continual improvement and innovation, Taplanes have developed an impressive portfolio of pre-fabricated shower enclosures ideally suited to a wide variety of modern applications.

This comprehensive choice incorporates shower cubicles, en suite pods and mini-pods. In addition, Taplanes provide enclosures tailored to accommodate the semi-ambulant and less able.

Regardless of product type a twenty five year guarantee is provided as standard with a life expectancy well in excess of thirty.

All Taplanes products are constructed throughout from specially formulated polypropylene, resulting in a unit that is significantly more durable and reliable than comparable alternatives.

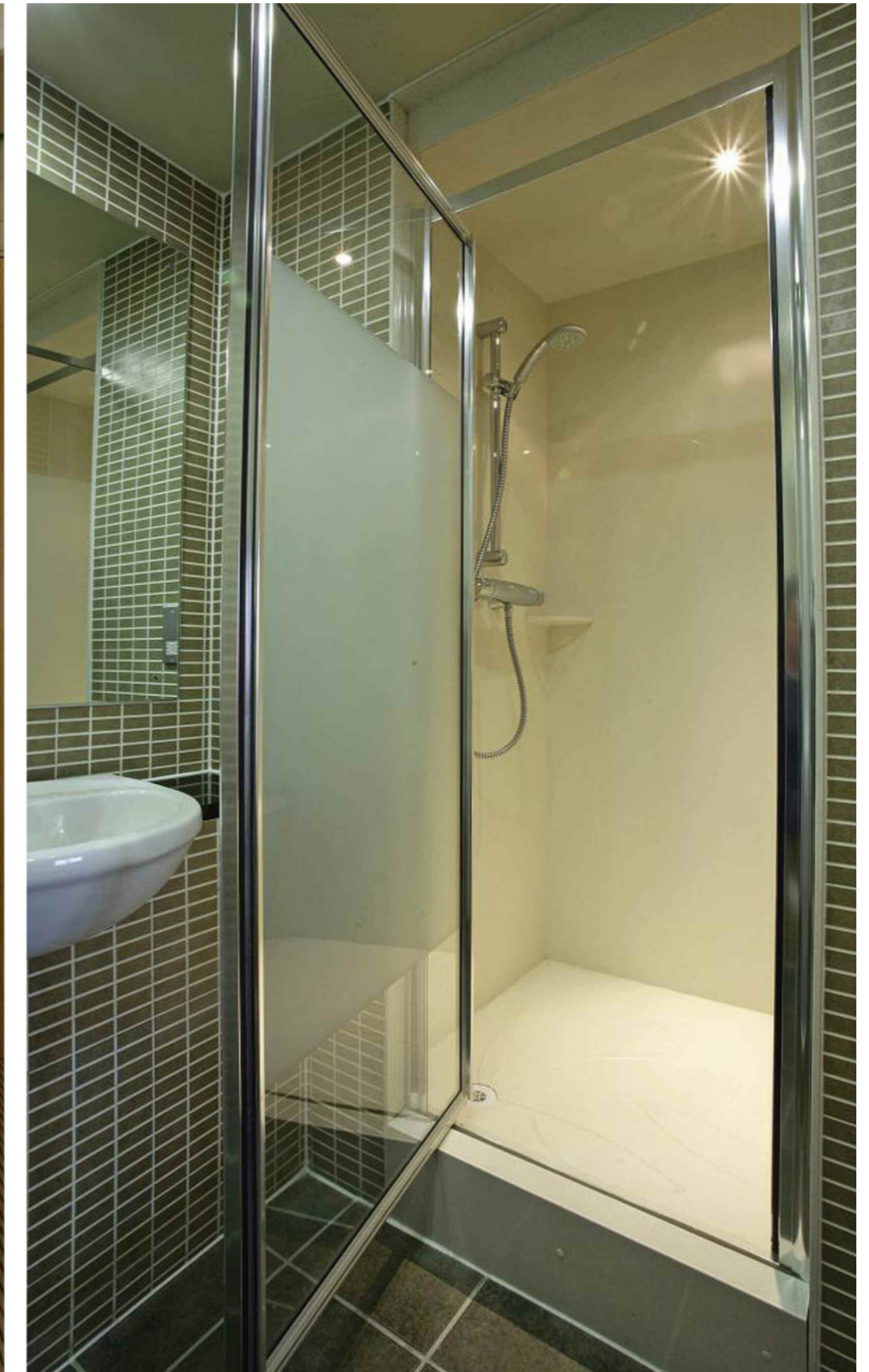
In addition the material does not support bacterial growth or adhesion making the cubicles ideal for meeting general health and safety requirements.

# Installations

With a strong client base including universities, schools and several major hotel groups, Taplanes pre-formed shower enclosures overcome the inherent problems associated with conventional bathroom areas.

Innovative and stylish designs together with product reliability ensure Taplanes are the preferred choice in both the refurbishment and new build sectors. The pre-fabricated construction provides many advantages over traditional construction methods, delivering significant long-term benefits.

- Easily installed
- Reduced maintenance costs
- Reduced cleaning costs
- Long-term solution



# Installations

Both one-piece and sectional designs are provided by Taplanes. The sectional designs are primarily aimed towards the refurbishment sector allowing the units to be manoeuvred into the most restricted locations with ease.

Alternatively, and if the build process allows, the one-piece units could be considered.

- Universities
- Schools
- Hospitals
- Hotels
- MoD
- Housing Associations
- Hostels



# Accessories



# Our Service

## Versatility

The examples shown within this brochure highlight a small selection of projects Taplanes have recently undertaken.

All product designs are provided with a considerable degree of flexibility. Size, shape and specification details can be tailored to suit, with AutoCAD and SolidWorks models provided as standard.

Colour choice, shower fittings, lighting, extraction, door types and sanitary ware, together with pre-drilling and location requirements can be discussed in greater detail by contacting Taplanes direct. See opposite for a selection of examples.

## Installation

Taplanes cubicles should be fitted in strict accordance with the manufacturer's recommendations. Detailed installation instructions and recommended installers are available on request.

Please note that building tolerances should be allowed during installation.

## Cleaning

Taplanes products should be cleaned with a soft nylon brush or cloth. Recommended maintenance and cleaning procedures are available on request.

## Development

Continued investment in equipment and people, combined with a readiness to adapt and work closely with the client, keeps Taplanes at the forefront of their industry. References can be supplied on request.

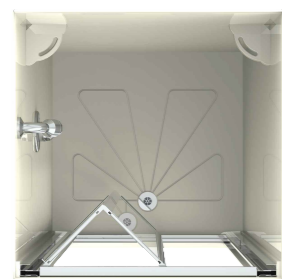
Tel: +44 (0) 1423 771 645  
 Fax: +44 (0) 1423 771 916  
 Email: [admin@taplanes.co.uk](mailto:admin@taplanes.co.uk)  
[www.taplanes.co.uk](http://www.taplanes.co.uk)



Taplanes products are manufactured solely in the UK



# Cubicles



## ALPHA CUBICLE

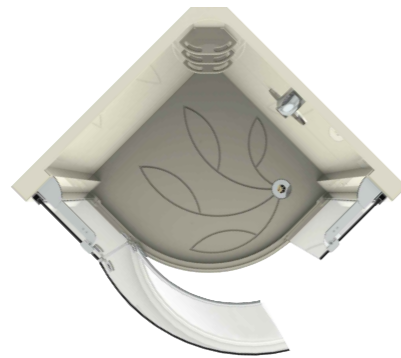
### ONE PIECE DESIGN

DIMENSIONS:  
750(w) x 770(d) x 2250(h)  
800(w) x 760(d) x 2150(h)

INTEGRAL SHOWER WASTE  
AND SOAP DISH

AVAILABLE WITH CURTAIN  
PIVOT OR BI-FOLD DOOR

SHOWER FITMENTS TO SUIT



## QUADRANT CUBICLE

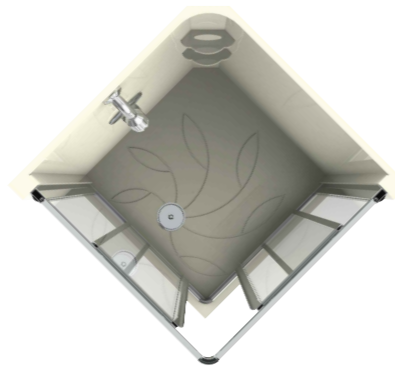
### SECTIONAL DESIGN

DIMENSIONS:  
850(w) x 850(d) x 2250(h)

INTEGRAL SHOWER WASTE  
AND SOAP DISH

AVAILABLE WITH LUXURY  
QUADRANT DOOR

SHOWER FITMENTS TO SUIT



## PRANKERD CUBICLE

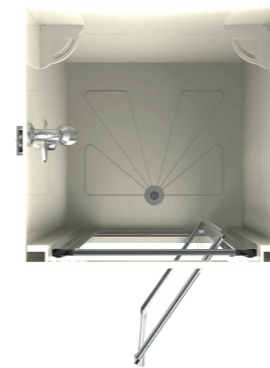
### SECTIONAL DESIGN

DIMENSIONS:  
750(w) x 750(d) x 2250(h)  
830(w) x 830(d) x 2250(h)

INTEGRAL SHOWER WASTE  
AND SOAP DISH

AVAILABLE WITH CORNER  
ENTRY DOOR

SHOWER FITMENTS TO SUIT



## OMEGA CUBICLE

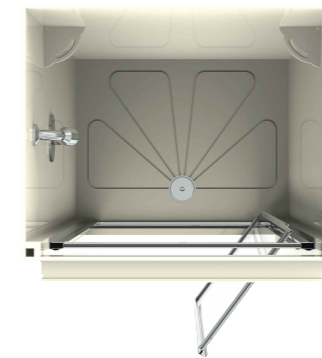
### SECTIONAL DESIGN

DIMENSIONS:  
720(w) x 770(d) x 2200(h)  
770(w) x 770(d) x 2200(h)

INTEGRAL SHOWER WASTE  
AND SOAP DISH

AVAILABLE WITH CURTAIN  
PIVOT OR BI-FOLD DOOR

SHOWER FITMENTS TO SUIT



## PRIMA CUBICLE

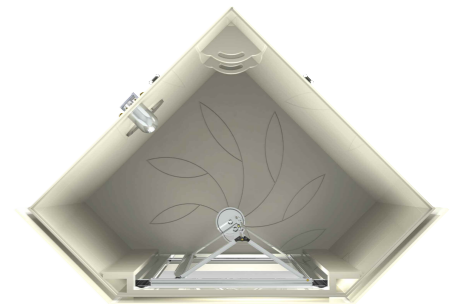
### SECTIONAL DESIGN

DIMENSIONS:  
BESPOKE

INTEGRAL SHOWER WASTE  
AND SOAP DISH

AVAILABLE WITH CURTAIN  
PIVOT OR BI-FOLD DOOR

SHOWER FITMENTS TO SUIT



## KELSO CUBICLE

### ONE PIECE OR SECTIONAL DESIGN

DIMENSIONS:  
900(w) x 900(d) x 2200(h)

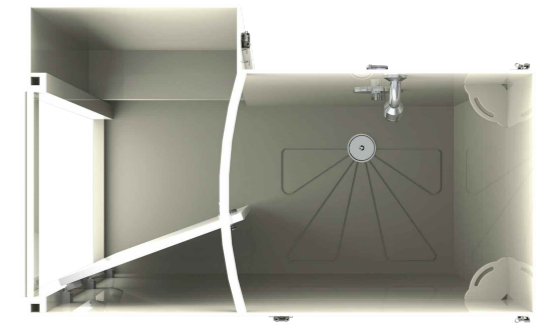
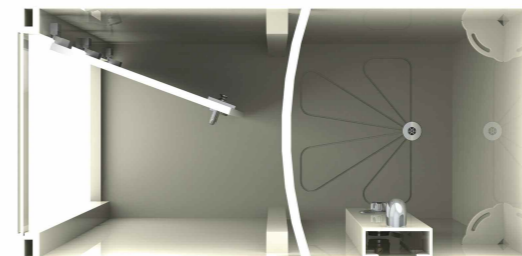
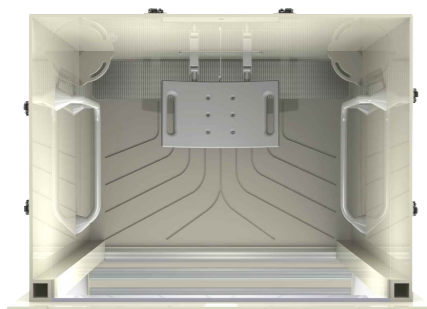
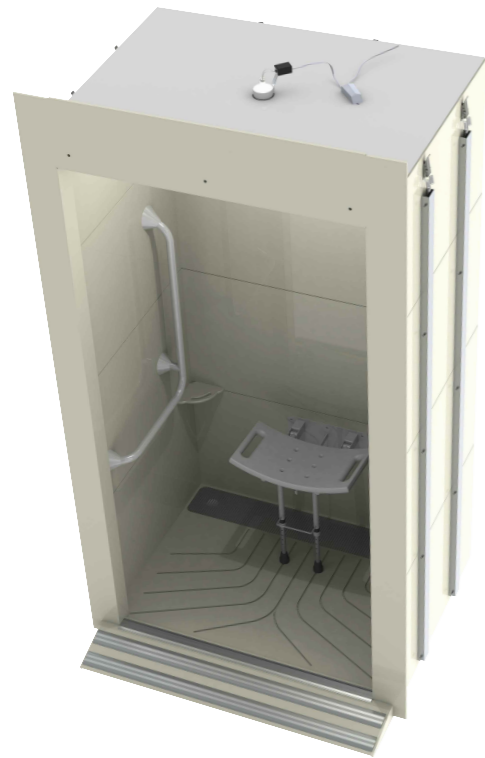
INTEGRAL SHOWER WASTE  
AND SOAP DISH

AVAILABLE WITH CURTAIN  
PIVOT OR BI-FOLD DOOR

SHOWER FITMENTS TO SUIT

# Cubicles

# Mini Pods®



## LEVEL ENTRY CUBICLE

ONE PIECE OR SECTIONAL DESIGN

DIMENSIONS:  
1000(w) x 900(d) x 2250(h)

ALTERNATIVE SIZES AVAILABLE

INTEGRAL SHOWER WASTE  
AND SOAP DISH

AVAILABLE WITH CURTAIN OR DOOR

SHOWER FITMENTS TO SUIT

## HOOKHAM CUBICLE

SECTIONAL DESIGN

DIMENSIONS:  
1350(w) x 850(d) x 2250(h)

INTEGRAL SHOWER WASTE  
AND SOAP DISH

AVAILABLE WITH CURVED  
SHOWER SCREEN ONLY

SHOWER FITMENTS TO SUIT

## MINI POD

SECTIONAL DESIGN

DIMENSIONS: BESPOKE

FRONT AND SIDE ENTRY MODELS AVAILABLE

INTEGRAL SHOWER WASTE, SOAP DISH  
AND DOOR

SHOWER FITMENTS, LIGHTING  
AND EXTRACTION TO SUIT

## LARKHILL MINI POD

SECTIONAL DESIGN

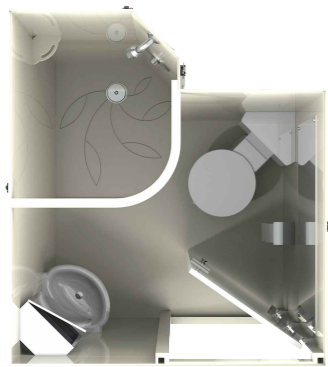
DIMENSIONS: BESPOKE

FRONT AND SIDE ENTRY MODELS AVAILABLE

INTEGRAL SHOWER WASTE, SOAP DISH  
AND DOOR

SHOWER FITMENTS, LIGHTING  
AND EXTRACTION TO SUIT

# En suite Pods



## AILSA POD

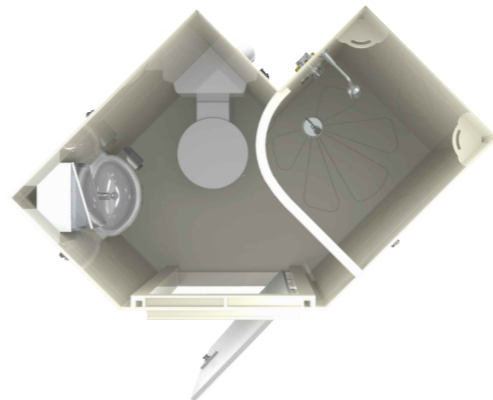
### SECTIONAL DESIGN

DIMENSIONS:  
1550(w) x 1375(d) x 2250(h)

ALTERNATIVE SIZES AVAILABLE

INTEGRAL SHOWER WASTE, SOAP  
DISH AND DOOR

SHOWER FITMENTS, LIGHTING  
SANITARY WARE AND EXTRACTION  
TO SUIT



## ARRAN POD

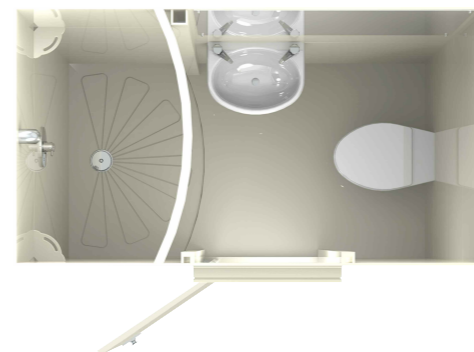
### SECTIONAL DESIGN

DIMENSIONS:  
1750(w) x 1450(d) x 2250(h)

ALTERNATIVE SIZES AVAILABLE

INTEGRAL SHOWER WASTE, SOAP  
DISH AND DOOR

SHOWER FITMENTS, LIGHTING  
SANITARY WARE AND EXTRACTION  
TO SUIT



## LINFIELD POD

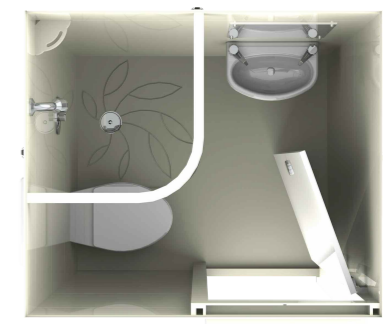
### SECTIONAL DESIGN

DIMENSIONS:  
2000(w) x 900(d) x 2250(h)

ALTERNATIVE SIZES AVAILABLE

INTEGRAL SHOWER WASTE, SOAP  
DISH AND DOOR

SHOWER FITMENTS, LIGHTING  
SANITARY WARE AND EXTRACTION  
TO SUIT



## JURA POD

### SECTIONAL DESIGN

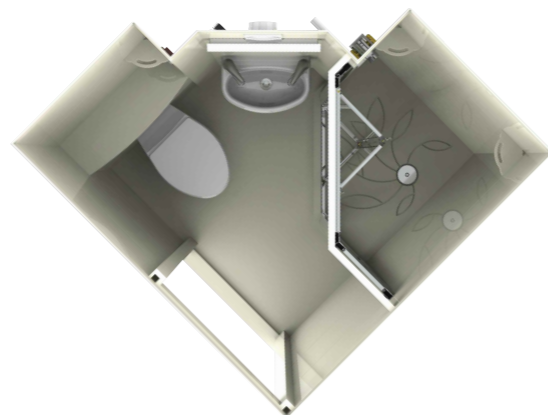
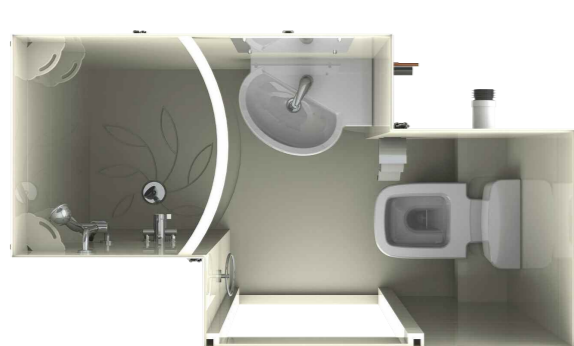
DIMENSIONS:  
1400(w) x 1200(d) x 2250(h)

ALTERNATIVE SIZES AVAILABLE

INTEGRAL SHOWER WASTE, SOAP  
DISH AND DOOR

SHOWER FITMENTS, LIGHTING  
SANITARY WARE AND EXTRACTION  
TO SUIT

# En suite Pods



## BRISTOL POD

### SECTIONAL DESIGN

DIMENSIONS:  
2050(w) x 1100(d) x 2250(h)

ALTERNATIVE SIZES AVAILABLE

INTEGRAL SHOWER WASTE, SOAP  
DISH AND DOOR

SHOWER FITMENTS, LIGHTING  
SANITARY WARE AND EXTRACTION  
TO SUIT

## IONA POD

### SECTIONAL DESIGN

DIMENSIONS:  
1575(w) x 1530(d) x 2250(h)

ALTERNATIVE SIZES AVAILABLE

INTEGRAL SHOWER WASTE, SOAP  
DISH AND DOOR

SHOWER FITMENTS, LIGHTING  
SANITARY WARE AND EXTRACTION  
TO SUIT

