

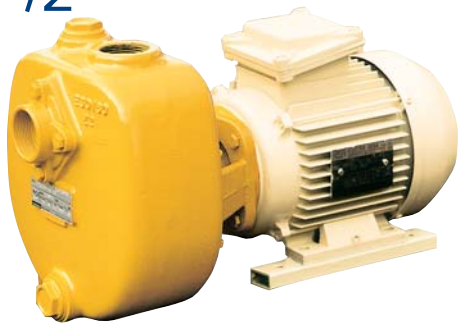
TT PUMPS

Self-priming Centrifugal Pumps

E Range



1 1/2"



T.T PUMPS

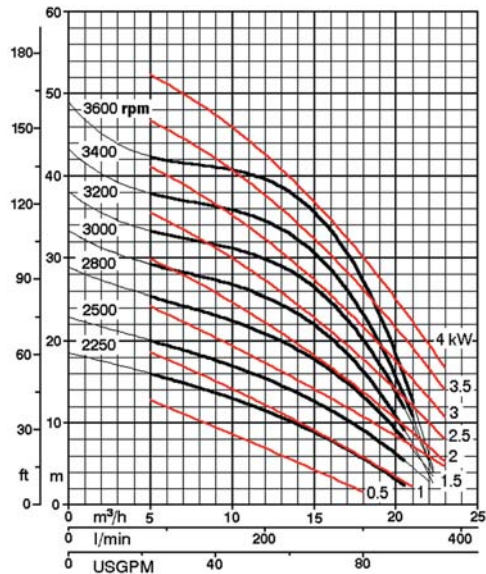
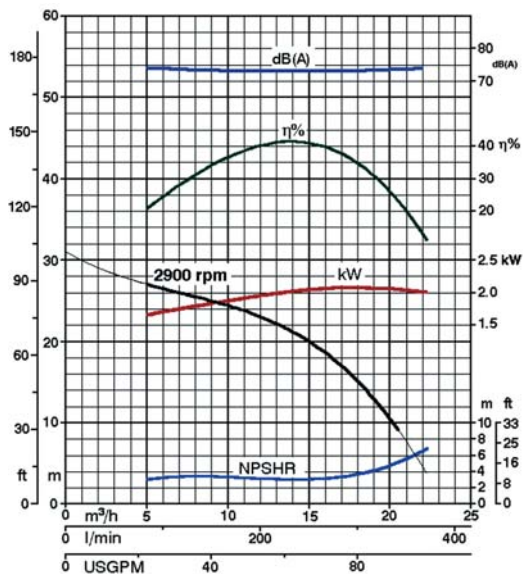
E 30-160 2.2 kW

Solids handling

Engine driven pumps

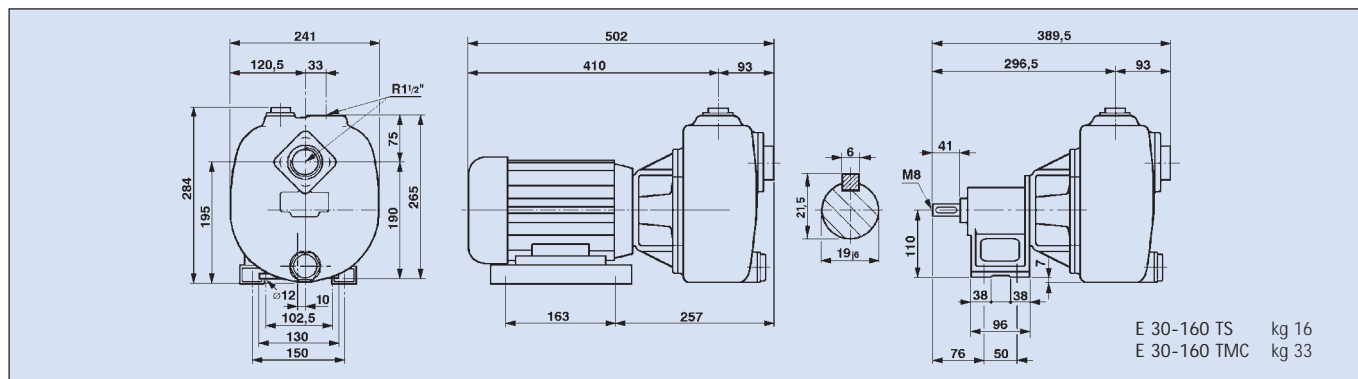
8 mm

6 mm

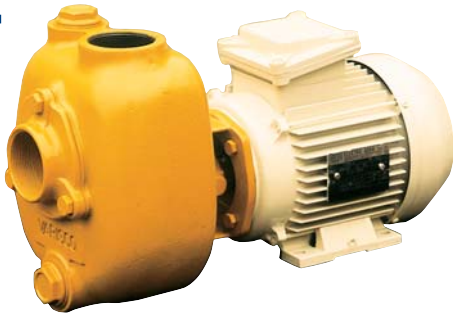


Make	Type	Shaft extension	Extension	Capacity cm ³	Power kW (DIN 6270)	RPM	Fuel tank l	Weight kg
<i>Petrol (gasoline) engines</i>								
Acme	A 220 B	STD	F	220	2.9	3600	3.2	43
Acme	AT 220 OHV	STD	F	220	3.8	3600	3.6	44
Acme	ALN 330 WB	STD	F	327	4.7	3600	4	49
Briggs & Str.	133432	495644	C	206	3.1	3600	3.8	44
Honda	GX 160 K1	T	C	163	3.6	3600	3.6	41
Intermotor	IM 250	STD	F	254	3.7	3600	4.2	49
Intermotor	LGA 226	STD	F	220	4.4	3600	3.1	44
Mitsubishi	GM 180	A02-a / A02-b / A03-a	C / X / A	181	3.3	3600	4	44
Ruggerini	RS 7.0	STD	F	285	4.2	3600	3.3	50
<i>Diesel engines</i>								
Acme	ADX 300	STD	*	301	4.4	3600	4.5	64
Lister	AC1	CA+BJ1	C	304	4.8	3600	5.1	73
Lombardini	15 LD 315	STD	F	315	4.1	3600	4.3	59
Ruggerini	MD 75.1	STD	F	327	4.4	3600	4	69

* Only long coupled



2"

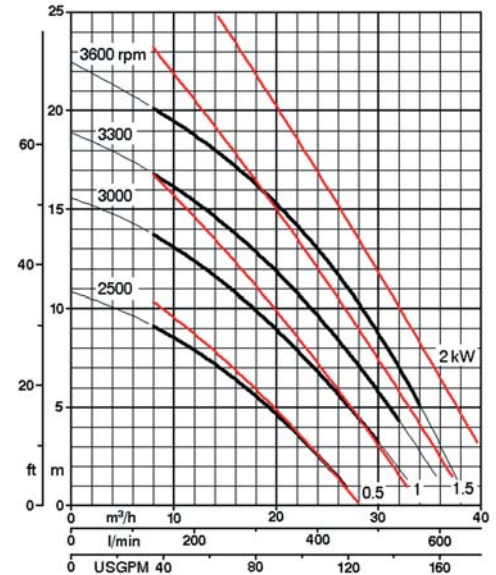
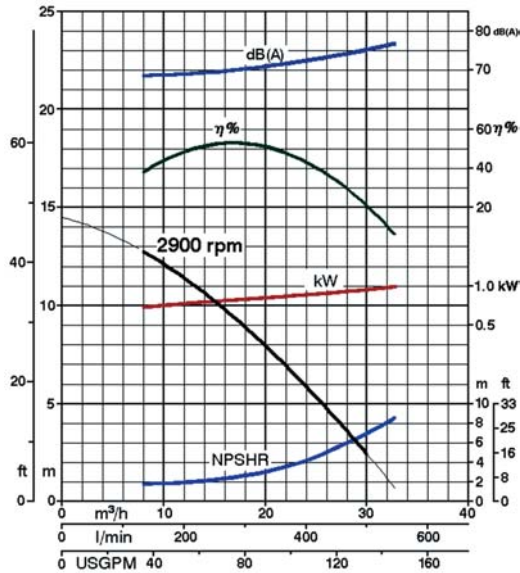


T.T PUMPS

E 50 1.1 kW

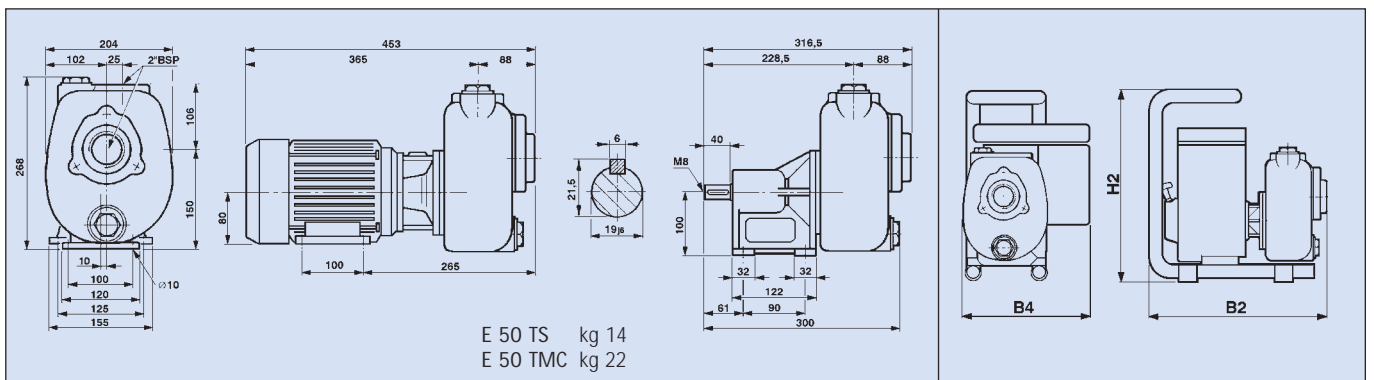
Solids handling

17 mm

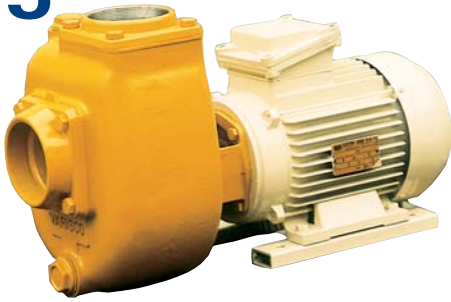


Make	Type	Shaft extension	Extension	Capacity	Power	RPM	Fuel tank	Weight	Dimensions		
				cm³	kW (DIN 6270)				l	kg	B2
<i>Petrol (gasoline) engines</i>											
Acme	A 180 B	STD	F	179	2.6	3600	3.2	27	450	350	510
Briggs & Str.	93432	495210	C	148	2.25	3600	3.0	25	450	350	510
Honda	GX 120 K1	T	C	118	2.9	3600	2.5	23	450	350	510
Intermotor	IM 250	STD	F	254	3.7	3600	4.2	33	450	350	510
Intermotor	LGA 226	STD	F	220	4.4	3600	3.1	28	450	350	510
Mitsubishi	GM 130	A02-a / A02-b / A03-a	C / X / A	126	2.0	3600	3.0	25	450	350	510
Tecnamotor	BM 153 P	STD	A	148	2.6	3650	1.2	21	450	350	510
Robin	EY 15 DP	DP / DP 5/8"	X / C	143	2.0	3600	2.8	23	450	350	510
Ruggerini	RS 4.5	STD	F	179	2.6	3600	2.3	23	450	350	510
<i>Diesel engines</i>											
Acme	ADX 300	STD	*	301	4.4	3600	4.5	61	<i>On trailer</i>		
Lombardini	15 LD 225	STD	F	224	3.1	3600	3	51			
Lombardini	15 LD 315	STD	F	315	4.1	3600	4.3	56			
Ruggerini	MD 75.1	STD	F	327	4.4	3600	4	66			
Ruggerini	MICRO 50	STD	F	260	2.8	3600	3.8	50			

* Special coupling



3"



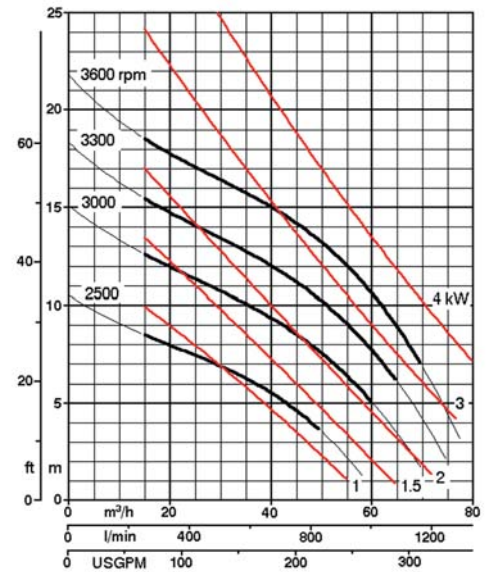
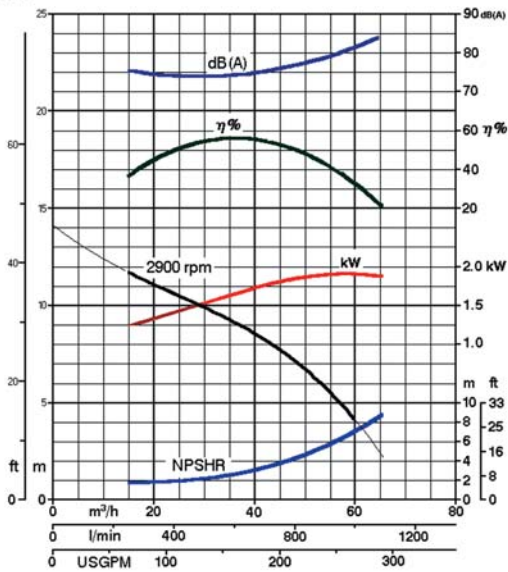
T.T PUMPS

E 75

2.2 kW

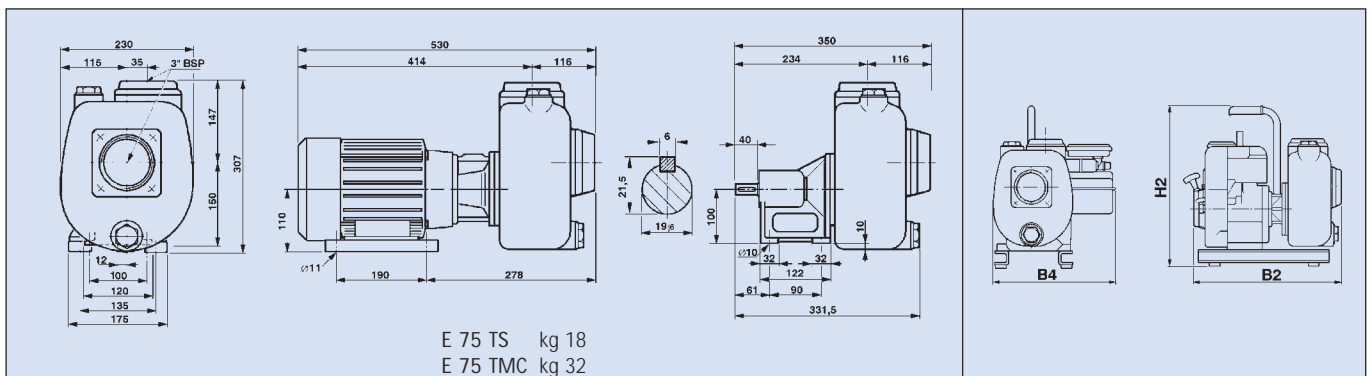
Solids handling

25 mm



Make	Type	Shaft extension	Extension	Capacity	Power	RPM	Fuel tank	Weight	Dimensions			
				cm³	kW (DIN 6270)				l	kg	B2	B4
<i>Petrol (gasoline) engines</i>												
Acme	A 220 B	STD	F	220	2.9	3200	3.2	33	500	400	600	
Acme	AT 220 OHV	STD	F	220	3.8	3600	3.6	34	500	400	600	
Acme	ALN 330 WB	STD	F	327	4.7	3600	4	39	500	400	600	
Briggs & Str.	133432	495644	C	206	3.1	3200	3.8	33	500	400	600	
Honda	GX 160 K1	T	C	163	3.6	3600	3.6	33	500	400	600	
Intermotor	IM 250	STD	F	254	3.7	3600	5.2	39	500	400	600	
Intermotor	LGA 226	STD	F	220	4.4	3600	3.1	34	500	400	600	
Mitsubishi	GM 180	A02-a / A02-b / A03-a	C / X / A	181	3	3200	4	33	500	400	600	
Robin	EY 23 DP	DP	X	225	3.3	3600	4	33	500	400	600	
Ruggerini	RS 6.0	STD	F	219	3.5	3600	2.3	29	500	400	600	
<i>Diesel engines</i>												
Acme	ADX 300	STD	*	301	4.4	3600	4.5	74	<i>On trailer</i>			
Lister	AC1	CA+BJ	C	304	4.8	3600	5.1	83				
Lombardini	15 LD 315	STD	F	315	4.1	3600	4.3	69				
Ruggerini	MD 75.1	STD	F	327	4.4	3600	4	79				

* Special coupling



4"



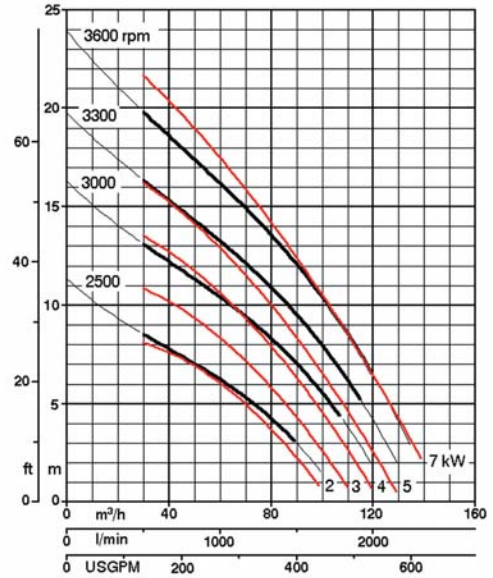
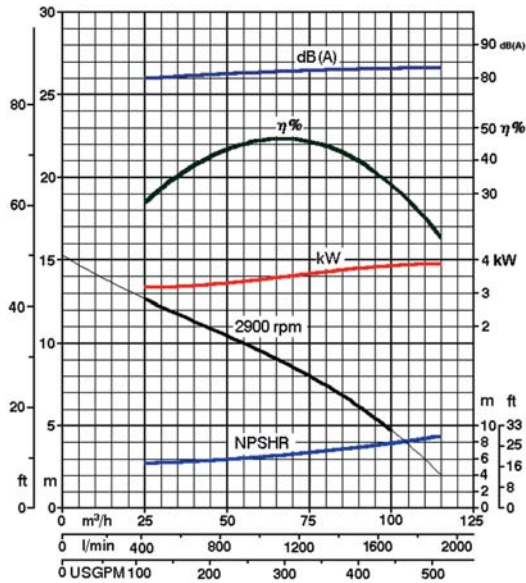
T.T PUMPS

E 100

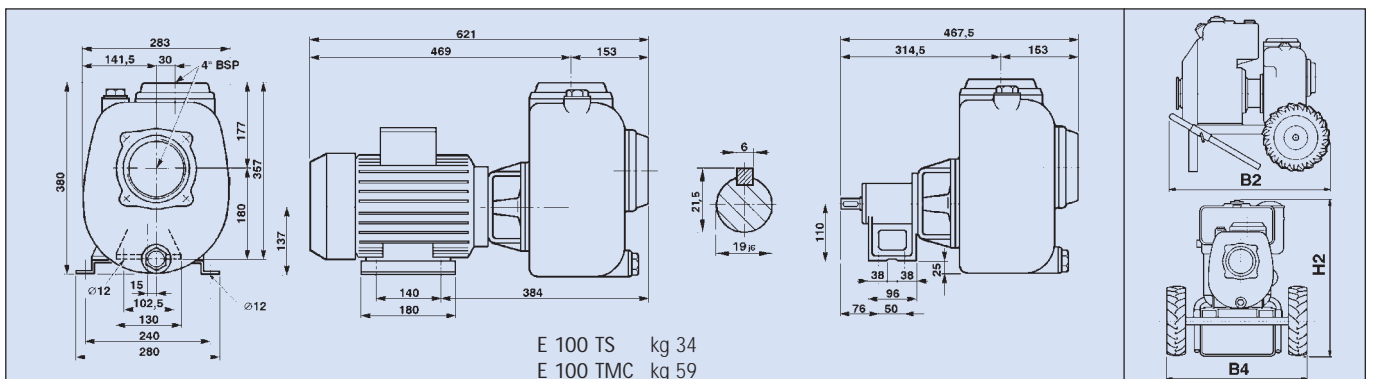
4 kW

Solids handling

38 mm



Make	Type	Shaft extension	Extension	Capacity	Power	RPM	Fuel tank	Weight	Dimensions		
				cm³	kW (DIN 6270)				l	kg	B2
<i>Petrol (gasoline) engines</i>											
Acme	ACT 340 OHC	STD	F	338	7.2	3600	6	81	720	620	650
Briggs & Str.	196432	495280	G	319	4.9	3200	5.7	86	720	620	650
Intermotor	IM 350	STD	F	349	4.8	3200	5.2	74	720	620	650
Intermotor	IM 359	STD	F	349	5.3	3200	4.2	74	720	620	650
Mitsubishi	GM 300	A02-c	G	296	5.1	3200	6	77	720	620	650
Robin	EH 34 DP	SAE "B"-DP	G	338	5.2	3200	6	81	720	620	650
Ruggerini	RS 8.5	STD	F	334	4.9	3200	3.3	74	720	620	650
<i>Diesel engines</i>											
Acme	ADX 370	STD	F	370	5.0	3200	4.5	89	720	620	750
Acme	ADN 43 W	STD	F	426	5.5	3200	4.4	97	720	620	750
Lister	AD1	CB+BK	G	367	5.3	3000	5.2	104	720	620	750
Lombardini	6 LD 400	STD	F	395	5.2	3200	4.3	96	720	620	750
Lombardini	15 LD 400	STD	F	401	5.9	3600	5	108	720	620	750
Ruggerini	MC 71	STD	F	377	5.2	3200	4	91	720	620	750
Ruggerini	RF 81	STD	F	377	5.2	3200	4.3	99	720	620	750



Specifications

Cast-iron Casing and Impeller
Self-lubricating mechanical seal
BSP-tapped ports (NPT on request)
Versions: Pedestal;
Close-coupled Electric Motor;
Close-coupled Engine Driven

<p>A</p> <p>E50 E75</p>	<p>C</p> <p>E30-160 E50 E75</p>
<p>F</p> <p>E30-160 E50 E75 E100</p>	<p>H</p> <p>E100</p>
<p>G</p> <p>E100</p>	<p>N</p> <p>E50 E75</p>
<p>X</p> <p>E50 E75</p>	<p>Shaft extensions</p>

T-T CONTROLS is a Division of T-T PUMPS



T-T Controls design and manufacture motor control panels and monitoring systems for wide-ranging applications.

- **Building Equipment Control Systems including Energy Management**
- **Industrial Process Plant Control**
- **Pumping Projects including Water and Waste Pumping**
- **Transport**
- **Process Monitoring, Sensing, Indication and Alarm**

Design from concept to project completion

Manufacture

Installation

Commissioning

After-Sales Warranty and Service

OUR OPERATIONS ARE EXTREMELY FLEXIBLE, ENSURING THAT OUR WHOLE TEAM - SALES, DESIGN, PRODUCTION, TEST AND INSTALLATION - IS AVAILABLE AT ANY STAGE TO PROVIDE A COMPLETELY SATISFACTORY RESULT FOR OUR CLIENTS.



Other Products and Services

- **Package Pumping Stations**
- **Sewage and Industrial Pumps**
- **Pumping Contracts - Design, Install, Commission**
- **Control Systems**
- **After-Sales**

T-T PUMPS Ltd., Woore, Cheshire, CW3 9RU, England
Tel: +44 (0)1630 647200 Fax: +44 (0)1630 642100
e-mail: response@ttpumps.com web: www.ttpumps.com