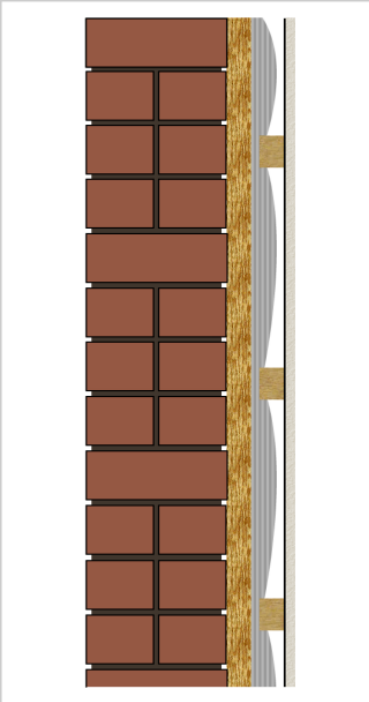


# SuperFOIL Insulation

## WALL INSTALLATION GUIDELINES

**SuperFOIL can be installed internally or externally and provides continuous insulation. It is ideal for Timber Frame and Masonry Walls.**



### Solid Wall - Internal Insulation

Apply Battens to wall either vertically or horizontally. Batten size required is dependant on product being used.

Apply SuperFOIL directly to the battens from the roll either horizontally or vertically.

When installing horizontally start at the bottom of the room and work up to the ceiling overlapping at each junction.

When installing vertically start at the high point and roll down to the floor.

Apply tension to the SuperFOIL as you staple in place; staple into the battens with staples inserted at regular intervals, 50mm to 100mm spacing is recommended. Cut to length and fix the next layer.

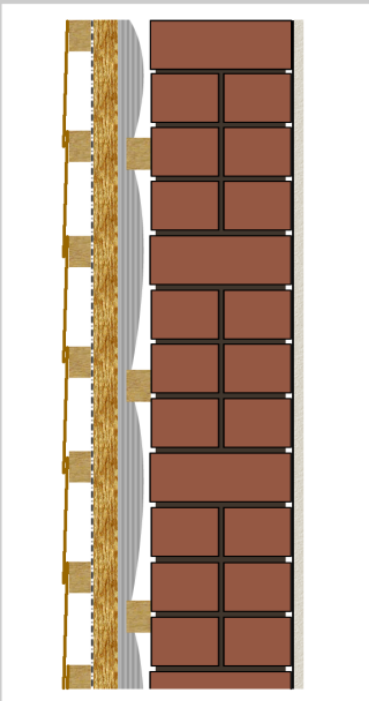
Overlap all joints by a minimum of 50mm and staple onto the battens where the joint crosses the batten.

At the floor & ceiling ensure extra length is allowed to ensure a good seal is created. Then fix with a batten.

To fix plasterboard install counter battens sized according to the product used. Always apply battens around window reveals.

Seal all joints, cuts & intrusions (such as pipes, ducting etc) using SuperFOIL tape before fixing plasterboard to the battens.

It is best practice to use a vapour control layer such as SFTV, directly behind plasterboard to minimise the risk of condensation.



### Solid Wall - External Insulation

Apply Battens to wall either vertically or horizontally. Batten size required is dependant on product being used.

Apply SuperFOIL directly to the battens from the roll either horizontally or vertically.

When installing horizontally start at the bottom of the wall and work up to the top, overlapping at each junction.

When installing vertically start at the high point and roll down to the floor.

Apply tension to the SuperFOIL as you staple in place; staple into the battens with staples inserted at regular intervals, 50mm to 100mm spacing is recommended. Cut to length and fix the next layer.

Overlap all joints by a minimum of 50mm and staple onto the battens where the joint crosses the batten.

At the floor & ceiling ensure extra length is allowed to ensure a good seal is created. Then fix with a batten.

Install counter battens sized according to the product used. Always apply battens around window reveals.

Seal all joints, cuts & intrusions (such as pipes, ducting etc) using SuperFOIL tape before fixing your external surface to the battens.

It is best practice to use a breathable membrane layer such as SFBB directly behind the external surface, to act as a secondary rain barrier and reduce the risk of condensation.

If installing SF19BB, a separate breathable membrane is not required as SF19BB provides both insulation layer and breather membrane in one.

#### Points to Note

Overlapped joints should be overlapped by a minimum of 50mm & taped using 100mm SuperFOIL Cold Weather Tape.

Butt joints or any place where SuperFOIL will butt up a surface or other pieces of SuperFOIL) ensure that the Superfoil is firmly up against the adjoining surface / material, do not leave gaps or spaces between the 2 parts, cut the materials a little longer (2 to 3 mm) so they are pushing into the adjoining material. Then apply SuperFOIL 100mm wide tape to the joint to ensure the joint is sealed.

You can use 12" scissors/shears, a GUS rotating power cutter or a craft knife to cut SuperFOIL products.

To achieve the performance levels stated SuperFOIL must be installed with an air gap on either side which can be created by using battens.

No special or protective clothing/handling is required. When installing outside in bright sunlight be careful of strong reflection.

SuperFOIL is light weight and easy to handle and should be stored indoors or under cover until used. Once fitted SuperFOIL should be covered within 48 hours.

# SuperFOIL Insulation

## WALL INSTALLATION GUIDELINES

### Timber Frame - Internal Insulation

Apply SuperFOIL directly to the studs from the roll either horizontally or vertically.

When installing horizontally start at the bottom of the wall and work up to the top, overlapping at each junction.

When installing vertically start at the high point and roll down to the floor.

Apply tension to the SuperFOIL as you staple in place; staple into the studs with staples inserted at regular intervals, 50mm to 100mm spacing is recommended. Cut to length and fix the next layer.

Overlap all joints by a minimum of 50mm and staple onto the studs where the joint crosses the rafter.

At the floor & ceiling ensure extra length is allowed to ensure a good seal is created. Then fix with a studs.

To fix plasterboard install counter battens sized according to the product used. Always apply battens around window reveals.

Seal all joints, cuts & intrusions (such as pipes, ducting etc) using SuperFOIL tape before fixing plasterboard to the battens.

It is best practice to use a vapour control layer such as SFTV, directly behind the plasterboard to minimise the risk of condensation.

### Timber Frame - External Insulation

Apply SuperFOIL directly to the studs from the roll either horizontally or vertically.

If an OSB board is required for racking: To achieve maximum performance a batten should be fixed to create an air gap on both sides of the SuperFOIL.

Install battens sized according to the product. Always apply battens around window reveals.

When installing horizontally start at the bottom of the wall and work up to the top, overlapping at each junction.

When installing vertically start at the high point and roll down to the floor.

Apply tension to the SuperFOIL as you staple in place; staple into the battens/studs with staples inserted at regular intervals, 50mm to 100mm spacing is recommended. Cut to length and fix the next layer.

Overlap all joints by a minimum of 50mm and staple onto the batten/stud where the joint crosses the batten/stud.

At the floor & ceiling ensure extra length is allowed to ensure a good seal is created. Then fix with a batten.

Seal all joints, cuts & intrusions (such as pipes, ducting etc) using SuperFOIL tape before fixing your external surface to the battens.

It is best practice to use a breathable membrane layer such as SFBB directly behind the external surface, to act as a secondary rain barrier and reduce the risk of condensation.

If installing SF19BB, a separate breathable membrane is not required as SF19BB provides both insulation layer and breather membrane in one.

#### Installer notes:

SuperFOIL can be used in all types of roof structure.

SuperFOIL can be laid horizontally or vertically depending on the characteristics of the area to be insulated.

SuperFOIL can be cut with a craft knife or scissors.

SuperFOIL is attached using galvanised or stainless steel staples.

Contact with lead, copper and its alloys should be avoided.

Do not use SuperFOIL to insulate a chimney flue.

When using SuperFOIL around downlighters a 30mm clear cavity must be provided. The use of fire rated fittings or fire hoods is recommended.

SuperFOIL is most effective with an air gap easily provided with battens.

SuperFOIL should be stored under cover and protected from the elements.

SuperFOIL tape (20m x 100mm) to be used on all overlaps and joints.

Be careful of the sun's reflection when installing outside.



For any other advice contact our help desk on  
01 636 63 99 00 or email [admin@superfoil.co.uk](mailto:admin@superfoil.co.uk).