

£950 Million Project

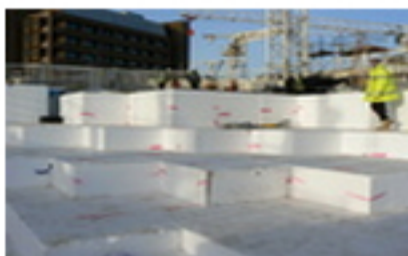
Sundolitt supplies its Structural EPS blocks to one of the UK's largest and most prestigious construction projects



Sundolitt is proud to have been chosen as the supplier of expanded polystyrene to this prestigious £950 million development.

In total, 8,000 m³ of our structural EPS blocks were used throughout the site, as a substrate to the temporary site access road and permanently as load-bearing void fill.

We delivered up to 10 articulated trailers of large format EPS blocks a week to this 42.5 acre city centre development.



As you can see from the image on the left, the central area features mature landscaping, a lake, a network of pathways and open-air performance areas alongside places to relax and get something to eat and drink.

Sundolitt's EPS is the load-bearing core beneath this beautiful area.

Main contractors for the massive project, which opened in Spring 2008, were Laing O'Rourke and Balfour Beatty.

3,300 jobs were created during the construction period and a further 4,400 permanent jobs will result from its completion.

The completed development will include:
40 individually designed buildings, 6 distinct districts, 1.6 million sq.ft. of retail space, apartments, 2 hotels, 2 department stores, 2.2 hectares of parklands & gardens, bars and restaurants, a 14 screen cinema and car parking for 3,000.

A selection of images of the completed site.

