

Fixing Instructions

Steni Colour, Steni Nature and Steni Imago

The fixing of Steni façade panels are done as ventilated rainscreen cladding on impregnated timber battens.

Product information on the pallet

The panels must be stored on pallets, under cover and on firm level ground.

Documentation, product information and fixing instructions are found on the pallet.

Steni Colour is available in 3 different gloss levels. The pallet will have additional markings to indicate the gloss of the panels on that pallet.

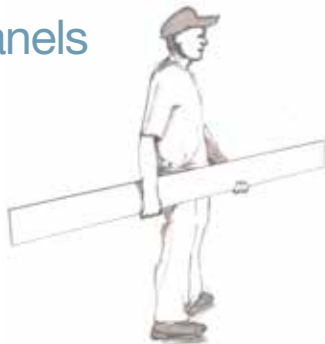
Order number	STANDARD OR NUMBER SPECIAL PCB NUMBER	DESTIN. COUNTRY	PALLET REF.	HM
81852	9360	N	1/1	
CUSTOMER ORDER No.	SPECIAL			
MOLDE				

HM Half matt
 M Matt
 HG High gloss

Handling the panels



When transporting on-site, always use tie-down straps on the pallets.



Carry the panels edgewise.

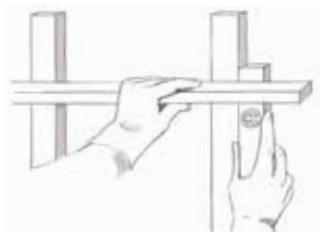
Battens

The fixing of Steni façade panels are done as ventilated rainscreen cladding on impregnated timber battens of class (AB (NS-INSTA 141)). To achieve optimal results, it is important to install the battens level and plumb.

Standard batten dimensions:

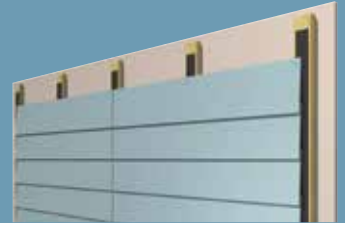
Underneath panel joint:
23 x 73 mm

Underneath centre of panel:
23 x 48 mm



FS200

Screw fixing on timber subframe as beveled sidings



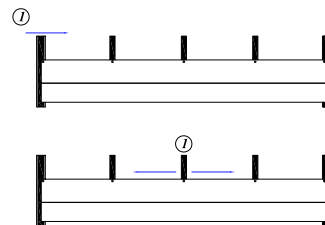
Special provisions

We reserve the right to make improvements and additions to instructions without prior notice. (Refer to publication month).

Measurements and tolerances

Before fixing, carefully measure the wall and panels. Panel length and width have a variation of +/- 2 mm, edge straightness within 1 mm and diagonal tolerance within 3 mm. Any deviation in dimensions should be distributed over several panels, so that the seams are even and continuous.

Fixing tips



Order of screws

Begin with screws in the centre of the panel, then go out to each end, or start from one end.

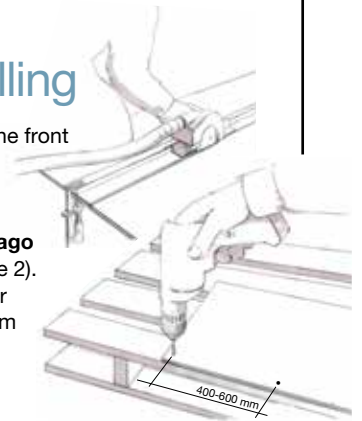


Use a spacing grip for the proper height and spacing when fixing the narrow panels.

Cutting and drilling

Cut **Steni Colour** panels from the front side. Use a level (saw blade 1) Min. speed: 3000 rpm

Cut **Steni Nature** and **Steni Imago** from the reverse side (saw blade 2). Drilling requires a masonry bit or tile bit. Make hole diameter 1 mm larger than screw diameter.

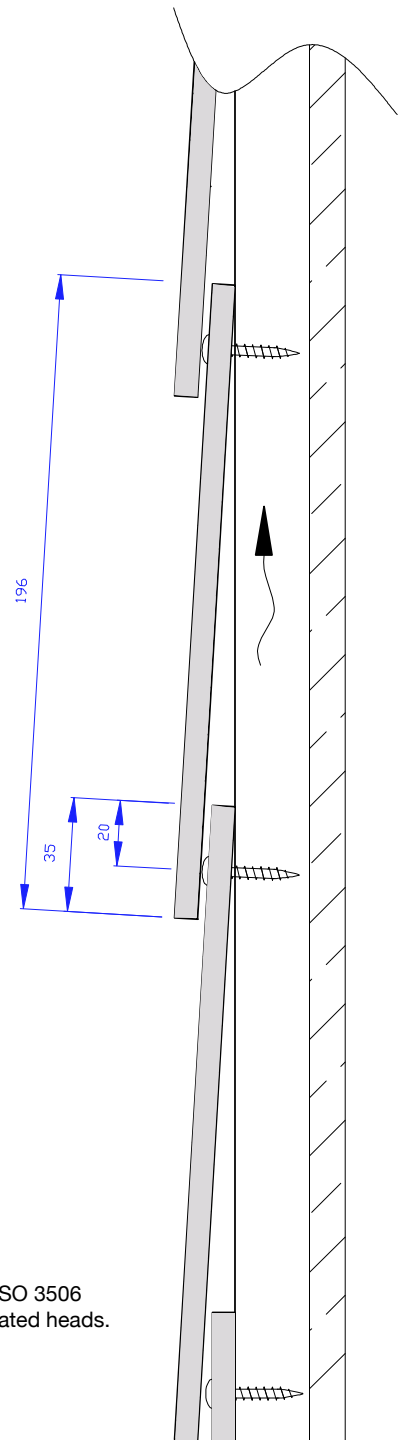
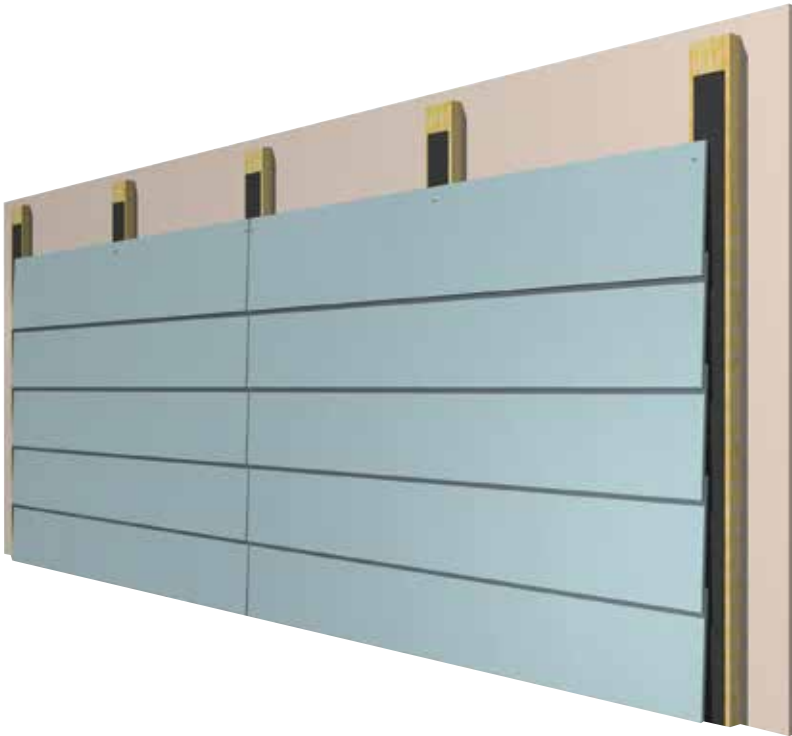


NB! Remember protective equipment. See HSE data sheet.



Building knowledge

Panel height: 196 mm

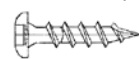


Rubber membrane:

Use approved rubber membrane strips between the laths and the Steni panels. (See pricelist for specifications).

Screws:

The facade panels are fixed with standard **Steni** screw.



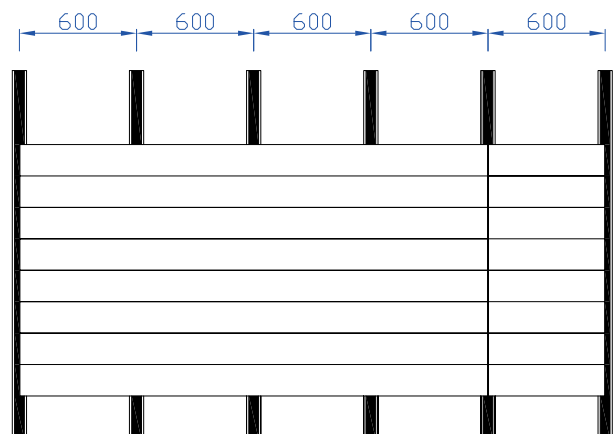
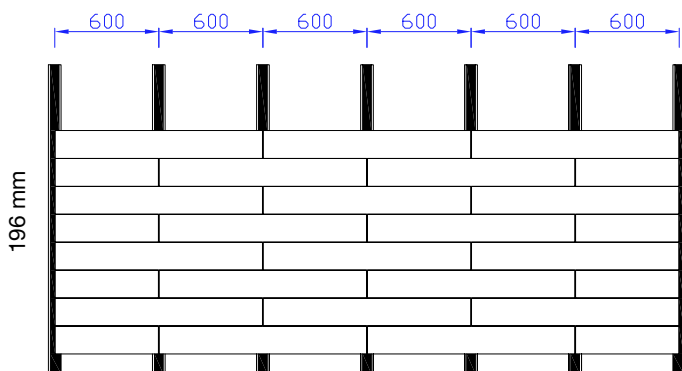
Screw dimension: 4,0 x 28 mm

Material: Stainless steel A4 – ISO 3506

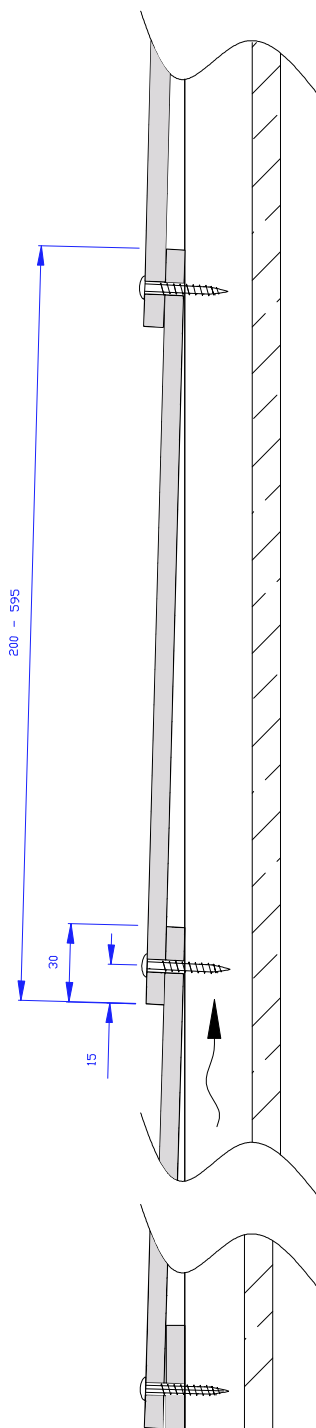
Colour: Polyester powder coated heads.

Square bit - R1

Steni Colour with 600-mm timber battens spacing



Panel height: 200-595 mm



Screws:

The facade panels are fixed with standard **Steni** screw.

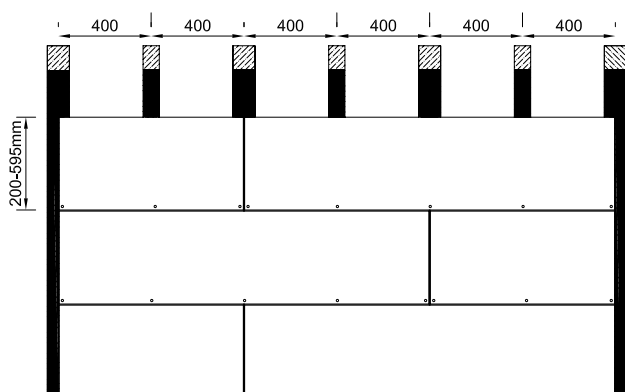


- Screw dimension: 4,0 x 35 mm
- Material: Stainless steel A4 – ISO 3506
- Colour: Polyester powder coated heads.
- Square bit - R1

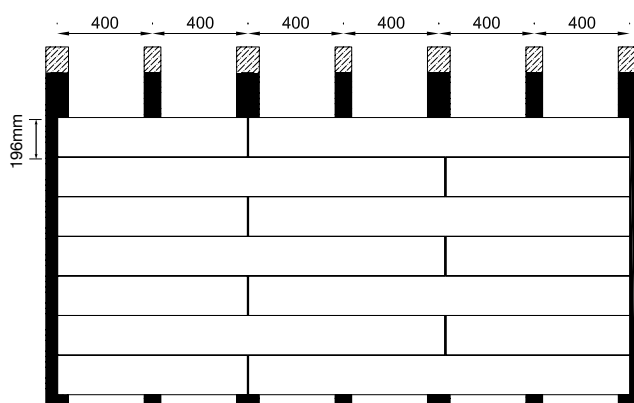
Steni Nature and Steni Imago

Batten distance max 450 mm (at 900 mm modules) and max 400 mm (at 1200 mm modules)

Panel height from 200-595 mm.



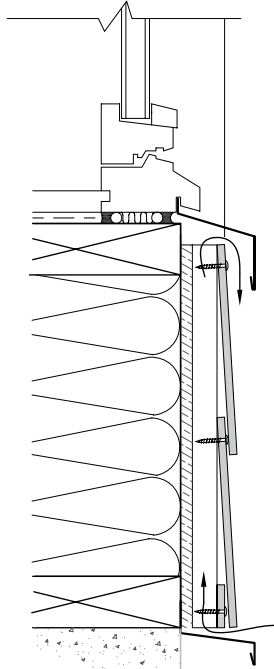
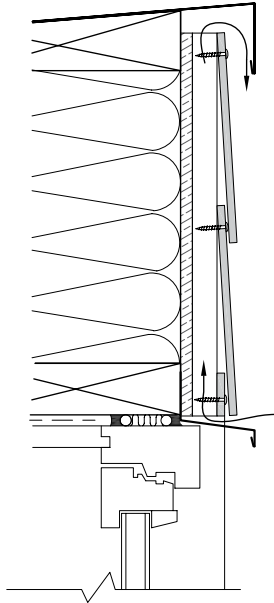
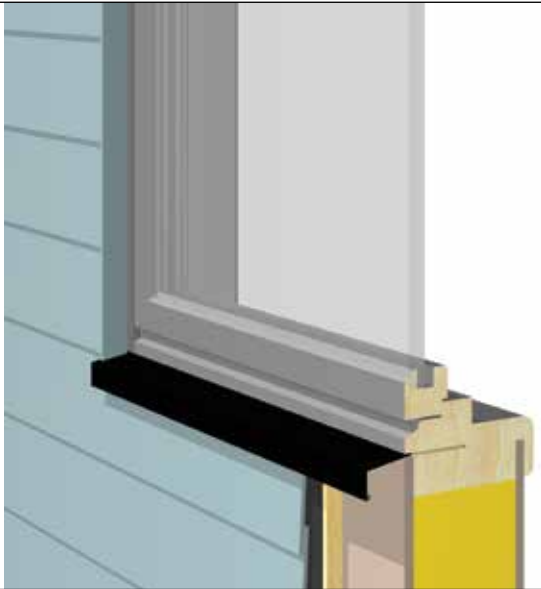
Panel height 196 mm.



FIXING



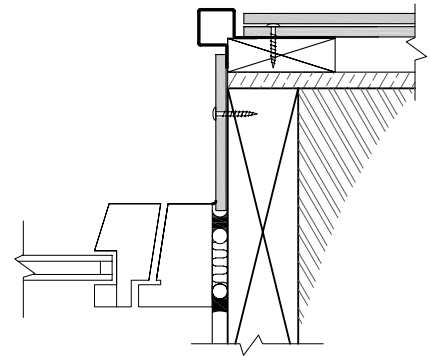
Fixing around windows



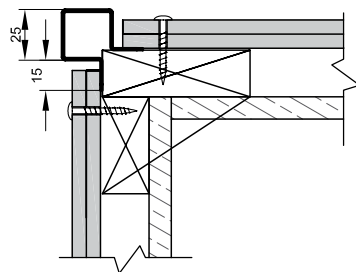
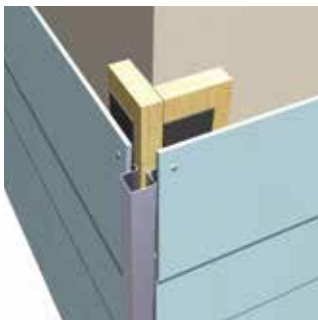
Steni facade panels installed as ventilated cladding

Example: Finishing above/under window

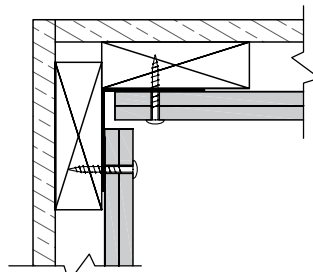
Example: Finishing along doors/windows



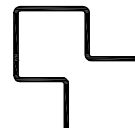
Fixing with corner profiles



Corners with corner profiles



Inside corner



Corner profile CP 15-25-40