



**Visualise
your buildings**

steni[®] *nature*

steni[®] *imago*

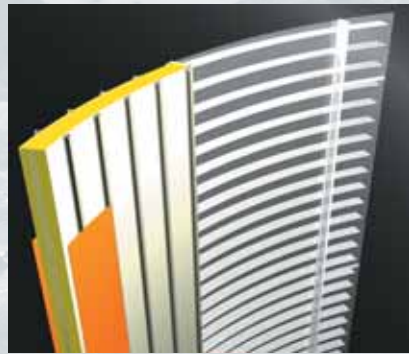
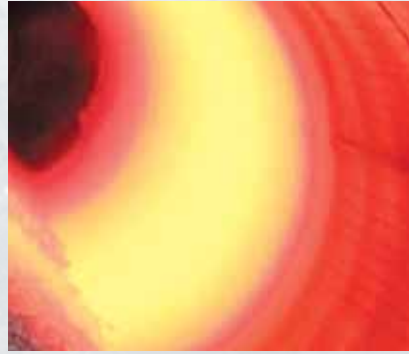


Building knowledge



Capture the moment

We live at a time when individualism and personal expression are becoming ever more important. We all seek that which is aesthetically pleasing, flexible and practical. As a forward-looking manufacturer of facade panels our priorities are durability, surfaces, colours and the possibility of combining our panels with other building materials.



Natural quality



steni nature protects the structure of the building against climatic stresses, provides complete weather resistance and maintains an attractive external appearance for many years. Over the last 40 years we have supplied 25 million square metres of our facade panels.

We use various types of stone from a number of different geographical and geological areas, enabling us to produce a wide range of natural stone colours, structures and grades.



Nature is key to our products.
steni facade panels are made with
natural raw materials, and the panels are
designed to withstand all the climatic
stresses caused by nature.





Composite
– the construction material of the future

Composite (FRP)

The major markets development of Composite materials is in high performance sectors such as Aerospace and Automotive as well as for products subject to extreme loads.

Because, Fibre Reinforced Polymers (FRP) have a number of advantages when compared to traditional construction materials, they are also of growing importance for the Cladding, Architecture, House Building and Modular Building sector.

Composite (FRP) form the basis of **steni's** facade product, and this is the main reason why **steni** can offer excellent durability and the best product warranties on the market.





A pleasant environment

The use of nature's own materials in our products, combined with modern design, is the basis for a pleasant local environment.





Numerous possibilities

– the choice is yours



Variation in colour, surface and format provides the opportunity to design a distinctive building which will last for generations.



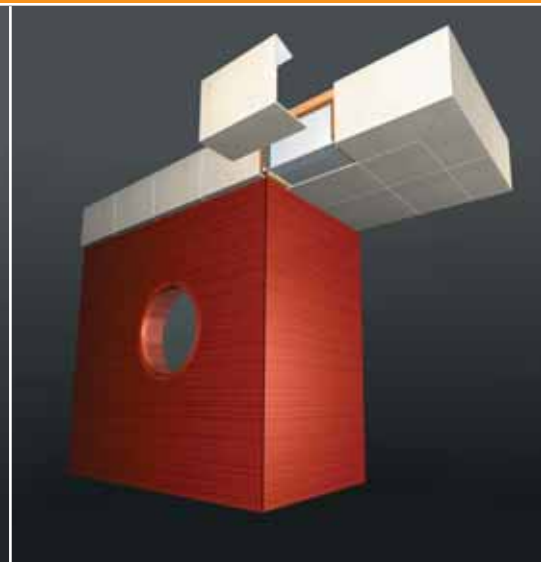
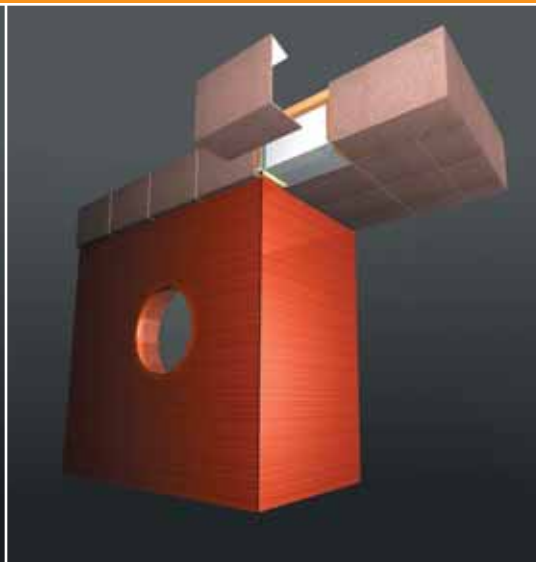
Innovation

steni's wide range of colours and surfaces, combined with other building materials such as glass, concrete, steel, aluminium and timber, provide unlimited possibilities for designing modern building exteriors for the future.



Glass, concrete, steel and steni

steni gives you the opportunity to use nature's own materials. Combined with our unique manufacturing process, this can create the facade design of the future.



steni *nature*

Available in five grades



Tumbled (8-12 mm)



Coarse (5-8 mm)



Medium (3-5 mm)



Fine (1-3 mm)

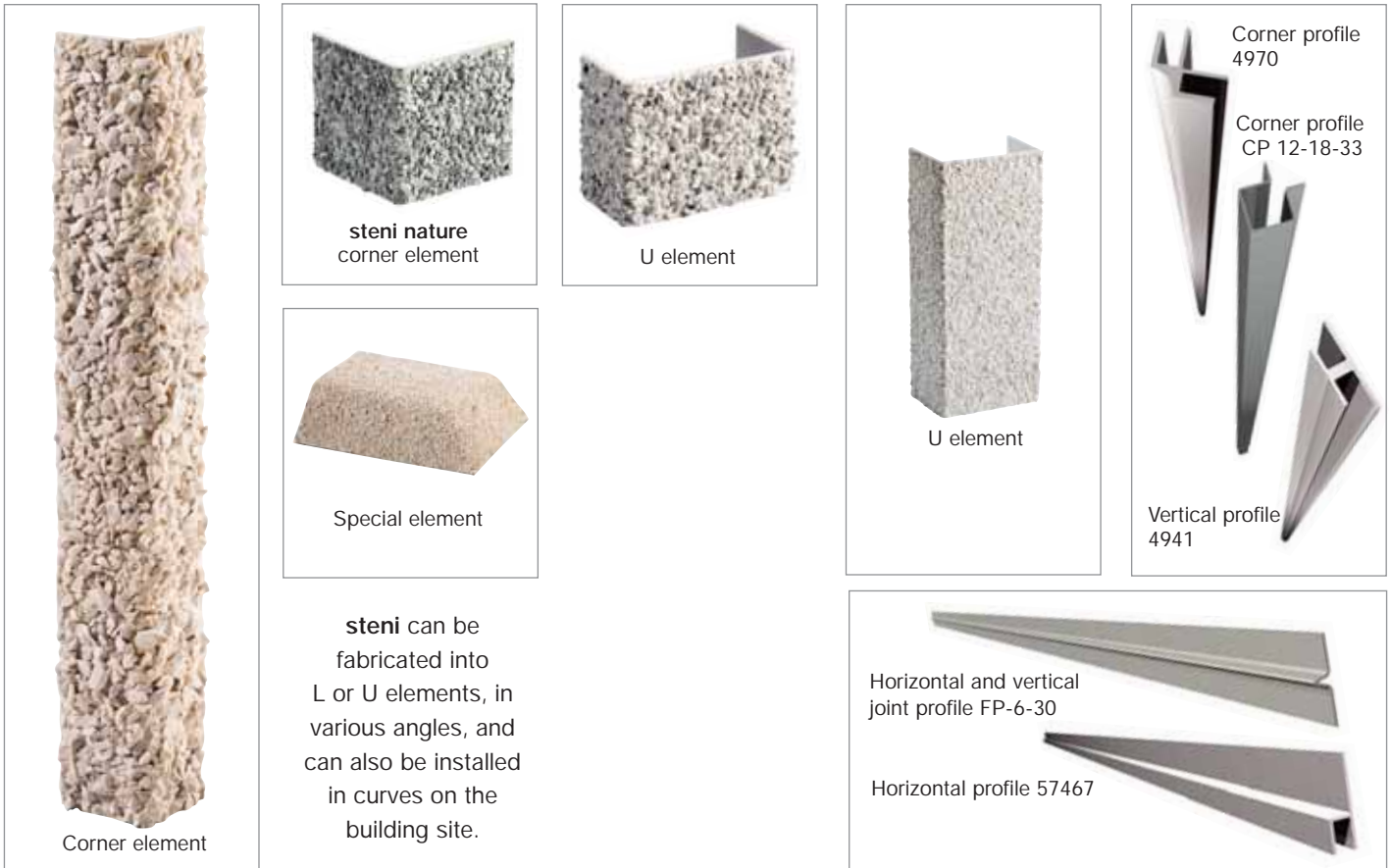


Fine Micro (1,2-1,8 mm)

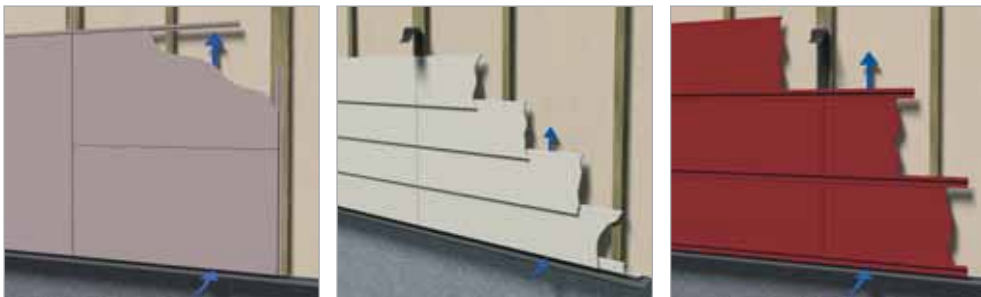
**The true
colours of
nature**

steni nature is available in 24 different colours and 5 different grades.





steni fixing systems



FS100

FS200

FS300

steni facade panels are designed to be fixed as ventilated cladding on impregnated timber battens or on steel or aluminium profiles. For more information, ask for our fixing instruction booklet, or see the fixing instructions on our website, www.steni.com

Technical specifications

steni[®] nature

Characteristic	Unit	Value				
		Fine Micro	Fine	Medium	Coarse	Tumbled
Thickness	mm	approx. 6	approx. 6, 5	approx. 8	approx. 14	approx. 18
Weight	kg/m ²	approx. 11,5	approx. 12	approx. 15	approx. 18	approx. 24
Density	kg/m ³	approx. 2000	approx. 2000	approx. 2000	approx. 2000	approx. 2000
Water absorption after 28 days	%	< 1,5	< 1,5	< 1,5	< 1,5	< 1,5
Humidity/change in dimensions	m/m%RF	5,2x10 ⁻⁶	5,2x10 ⁻⁶	5,2x10 ⁻⁶	5,2x10 ⁻⁶	5,2x10 ⁻⁶
Expansion due to temperature	mm/mK	0,021	0,021	0,021	0,021	0,021
Frost resistance (without damage)	cycles	> 300	> 300	> 300	> 300	> 300



Wide range of colours; stylish and practical

steni **imago** comes in colours which nature has not produced itself. The surface is ceramic, coloured at a temperature of over 900 °C, and is highly UV-resistant.

Technical specifications

steni[®] *imago*

Characteristic	Unit	Value
Thickness	mm	approx. 6
Weight	kg/m ²	approx. 11,5
Density	kg/m ³	approx. 2000
Water absorption after 28 days	%	< 1,5
Moisture/change in dimensions	m/m%RF	5,2x10 ⁻⁶
Expansion due to temperature	mm/mK	0,021
Frost resistance (without damage)	cycles	> 300

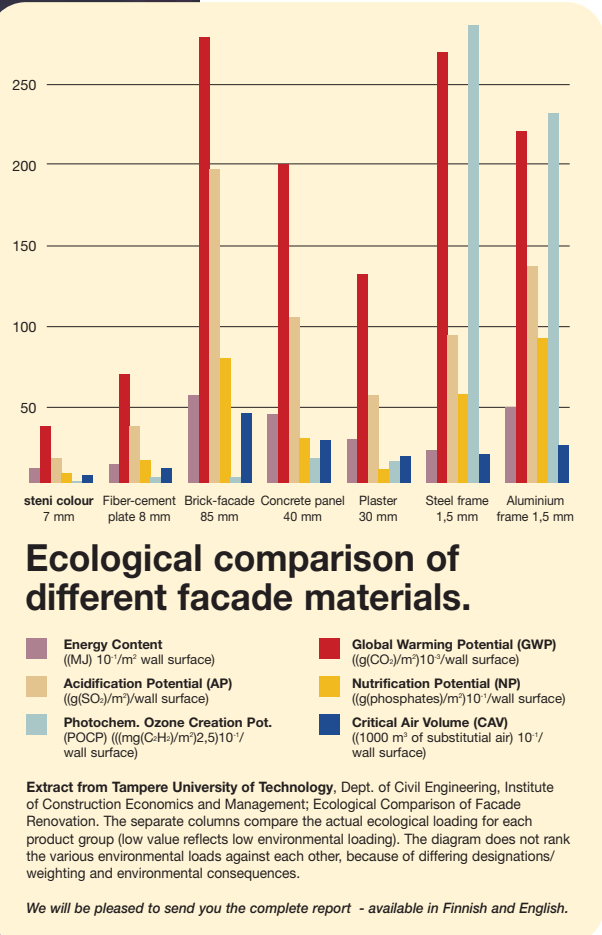
Fire classes steni nature & imago:

Country	Certificate	Fire class
Norway Iceland	Byggforsk nr 0011	Ut 1 / In 1
Sweden	SITAC 2443/78 SITAC 1422	Svårantändligt material Ytskikt kl. 1
Denmark	MK.6.21/04990	Class A materiale
Finland	STF 38/6221/2001	Class 1/1
The Netherlands	EN 13501-1	B-s2, d0
France	CSTB RA01-180	M1
United Kingdom	Wimlas no. 055/98	Class 0
Germany	Zulassung Z-33.2-4	B1
Switzerland	EMPA 148 516	6Q3

Best for the environment!

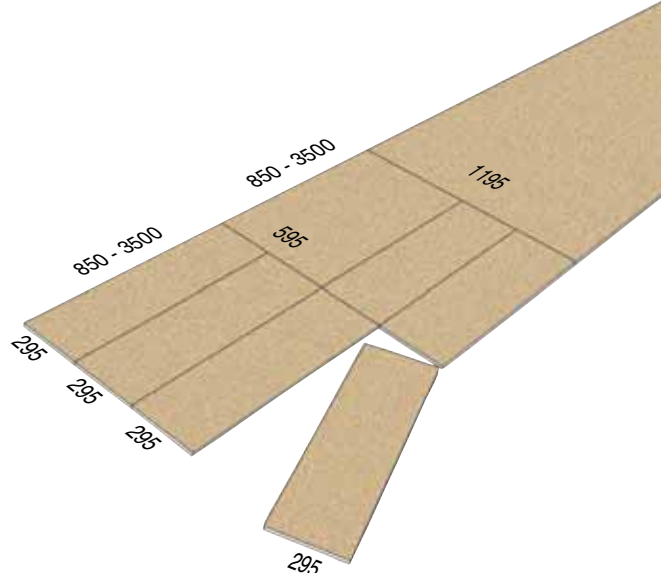
During the development of **steni** facades much emphasis has been placed on reducing environmental impact, both in terms of the resources and energy used during manufacture and the end product's effect on the environment and natural cycles. Through several independent tests, we are able to document this as fact, as can be seen from the diagram on the right! **steni** facades are now among the most environmentally friendly products on the market.

For more information please ask for our comprehensive Environmental Description.



Formats

steni facades are produced in a continual production process in which all lengths from 850-3500 mm are cut automatically. This makes us extremely flexible in terms of format, and wastage is minimal. Most formats are supplied custom-made from the factory.





Customer service



Certified



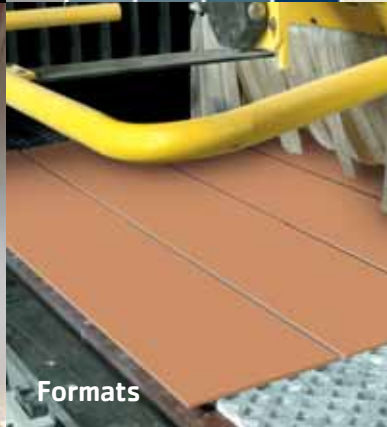
Colour flexibility



Web solutions



Technical support



Formats



On-site Support



www.steni.com



Logistics



steni gives you one of the best product warranties on the market!

In NBI Technical Approvals the Norwegian Building Research Institute gives **steni** facade panels an expected functional lifespan of 60 years. **steni** is certified in accordance with the NS-EN ISO 9001:1994 quality system.

A 25-year functional warranty and an expected lifetime of 60 years!

Organisation

steni as is an international company with about 120 employees. We have sales companies in Denmark, Finland, Norway, Sweden, United Kingdom and the Netherlands. Our production plants are located south of Oslo and in Wrexham, Wales, where we produce our products for both the national and international markets. In Europe, USA and Canada we have agreements with distributors for sale and marketing of our products.

History

The original **steni** facade panel was developed in Sandefjord, and introduced to the Norwegian market in 1965. The **steni** head office and main production premises are situated at Steinsholt in the municipality of Vestfold in southern Norway. Since we started more than 40 years ago steni products have grown rapidly, and now cover a wide range of products. Up until now we have delivered more than 25 million m² facade panels.

Products

Exterior panel

steni nature – with a surface of crushed natural stone

steni colour – with a surface of hardened acrylic

steni imago – with a surface of ceramic coloured stone

Interior panel

steni effect – with a surface of hardened acrylic for interior use

Balcony panel

steni duo – with a two sided surface of hardened acrylic

Foundation panel

steni terra – with a surface of crushed natural stone for use on foundations

System building

Stoneflex - Moduflex - Anti Slip - Agriflex

steni agri - with a surface of hardened acrylic.



www.steni.co.uk

steni uk ltd.

Units 1-4, Vauxhall Industrial Estate,
Ruabon, Wrexham LL14 6HA
Tlf.: + 44 (0) 1978 812 111
Fax: + 44 (0) 1978 810 399
E-mail: info@steni.co.uk



Building knowledge