

Compact with Style Range

Horizontal & Lo-Line

Designer

The subtle architectural look and feel of the Compact with Style is combined with value, range and availability to give you sophisticated designer styling for any room, commercial or domestic, at affordable prices.



Horizontal



Lo-Line

BIM

5
FIVE YEAR
WARRANTY

52 horizontal models

12 Lo-Line models

Heights: 200mm to 600mm

200mm

Lengths: 400mm to 2000mm

500mm to 2000mm

Outputs: 235 to 3202 watts,
802 to 10925 Btu/hr

125 to 966 watts,
425 to 3296 Btu/hr

Types: K1, P+ & K2

K1, P+ & K2

For more information call 0844 543 6200 or visit www.stelrad.com

Stelrad
Europe's favourite radiator

Follow us on:



@stelrad



facebook.com/stelradlimited

The Stelrad you know and so much more...

Stelrad Compact with Style Range



50 Δt (75/65/20°C)



Height	Length mm	Sections	Heat output			Heat output		
			UIN	Watts	Btu/hr	UIN	Watts	Btu/hr
300	500	15	7431105	235	802	7432205	449	1532
	1000	30	7431110	469	1600	7432210	898	3064
	1400	42	7431114	658	2245	7432214	1257	4289
	2000	60	7431120	940	3207	7432220	1796	6128
	400	12	7451104	298	1017	7452204	555	1894
	600	18	7451106	448	1529	7452206	833	2842
500	800	24	7451108	597	2037	7452208	1110	3787
	1000	30	7451110	746	2545	7452210	1388	4736
	1200	36	7451112	895	3054	7452212	1666	5684
	1400	42	7451114	1044	3562	7452214	1943	6630
	1600	48	7451116	1194	4074	7452216	2221	7578
	1800	54	7451118	1343	4582	7452218	2498	8523
600	2000	60	7451120	1492	5091	7452220	2776	9472
	400	12	7461104	348	1187	7462204	640	2184
	600	18	7461106	522	1781	7462206	961	3279
	800	24	7461108	696	2375	7462208	1281	4371
	1000	30	7461110	870	2968	7462210	1601	5463
	1200	36	7461112	1044	3562	7462212	1921	6554
	1400	42	7461114	1218	4156	7462214	2241	7646
	1600	48	7461116	1392	4750	7462216	2562	8742
	1800	54	7461118	1566	5343	7462218	2882	9833
	2000	60	7461120	1740	5937	7462220	3202	10925

Δt_{50} is the UK's industry standard for heating outputs, which has an operating temperature of 75/65/20°C if you have a low temperature heat source you may wish to consider Δt_{40} or Δt_{30} output (see your installer or system designer).

40 Δt (65/55/20°C)



Height	Length mm	Sections	Heat output			Heat output		
			UIN	Watts	Btu/hr	UIN	Watts	Btu/hr
300	500	15	7431105	176	600	7432205	335	1148
	1000	30	7431110	351	1197	7432210	671	2291
	1400	42	7431114	491	1677	7432214	940	3208
	2000	60	7431120	702	2394	7432220	1343	4583
	400	12	7451104	223	761	7452204	415	1416
	600	18	7451106	335	1143	7452206	623	2126
500	800	24	7451108	447	1524	7452208	830	2833
	1000	30	7451110	558	1904	7452210	1038	3542
	1200	36	7451112	669	2284	7452212	1246	4252
	1400	42	7451114	781	2664	7452214	1453	4959
	1600	48	7451116	893	3047	7452216	1661	5668
	1800	54	7451118	1005	3428	7452218	1869	6375
600	2000	60	7451120	1116	3808	7452220	2076	7085
	400	12	7461104	260	888	7462204	479	1633
	600	18	7461106	390	1332	7462206	719	2453
	800	24	7461108	521	1776	7462208	958	3269
	1000	30	7461110	651	2220	7462210	1198	4086
	1200	36	7461112	781	2664	7462212	1437	4903
	1400	42	7461114	911	3109	7462214	1676	5719
	1600	48	7461116	1041	3553	7462216	1916	6539
	1800	54	7461118	1171	3997	7462218	2156	7355
	2000	60	7461120	1302	4441	7462220	2395	8172

Stelrad Compact with Style Range



30 Δt (55/45/20°C)

K1

K2



Height	Length mm	Sections	Heat output			Heat output		
			UIN	Watts	Btu/hr	UIN	Watts	Btu/hr
300	500	15	7431105	121	413	7432205	231	788
	1000	30	7431110	242	824	7432210	462	1577
	1400	42	7431114	338	1154	7432214	647	2208
	2000	60	7431120	483	1648	7432220	924	3155
500	400	12	7451104	153	524	7452204	286	975
	600	18	7451106	231	787	7452206	429	1464
	800	24	7451108	307	1049	7452208	572	1950
	1000	30	7451110	384	1311	7452210	715	2439
	1200	36	7451112	461	1573	7452212	858	2927
	1400	42	7451114	538	1834	7452214	1001	3414
	1600	48	7451116	615	2098	7452216	1144	3903
	1800	54	7451118	692	2360	7452218	1286	4389
600	2000	60	7451120	768	2622	7452220	1430	4878
	400	12	7461104	179	611	7462204	330	1125
	600	18	7461106	269	917	7462206	495	1689
	800	24	7461108	358	1223	7462208	660	2251
	1000	30	7461110	448	1529	7462210	825	2813
	1200	36	7461112	538	1834	7462212	989	3376
	1400	42	7461114	627	2140	7462214	1154	3938
	1600	48	7461116	717	2446	7462216	1319	4502
	1800	54	7461118	806	2752	7462218	1484	5064
	2000	60	7461120	896	3057	7462220	1649	5626

EN 442 Certification Data – CETIAT tested in accordance with BS EN 442

Type	K1			P+	K2			
Height	300	500	600	200	200	300	500	600
W/m at 75/65/20	470	746	870	483	614	898	1388	1601
n-coefficients	1.26	1.28	1.28	1.31	1.29	1.30	1.31	1.31
Heated Surface Area (m ² /m)	2.09	3.80	4.66	1.51	2.10	3.51	6.33	7.74
Weight (kg/m)	14.13	20.23	24.27	12.14	13.15	19.30	32.03	38.40
Water Contents (l/m)	1.81	2.77	3.23	2.64	2.70	3.10	5.17	6.20
Wall to tap centre (mm)	54	54	54	-	-	-	-	-
Floor standing	-	-	-	76	76	76	76	76

Stelrad Compact with Style Lo-Line



K1

K2



Height	Length mm	Sections	Heat output			Heat output		
			UIN	Watts	Btu/hr	UIN	Watts	Btu/hr
50 Δt (75/65/20°C)	500	15	-	-	-	7422205	307	1047
	1000	30	-	-	-	7422210	614	2095
	1400	42	-	-	-	7422214	860	2934
	2000	60	-	-	-	7422220	1228	4190

$\Delta t50$ is the UK's industry standard for heating outputs, which has an operating temperature of 75/65/20°C if you have a low temperature heat source you may wish to consider $\Delta t40$ or $\Delta t30$ output (see your installer or system designer).

40 Δt
(65/55/20°C)

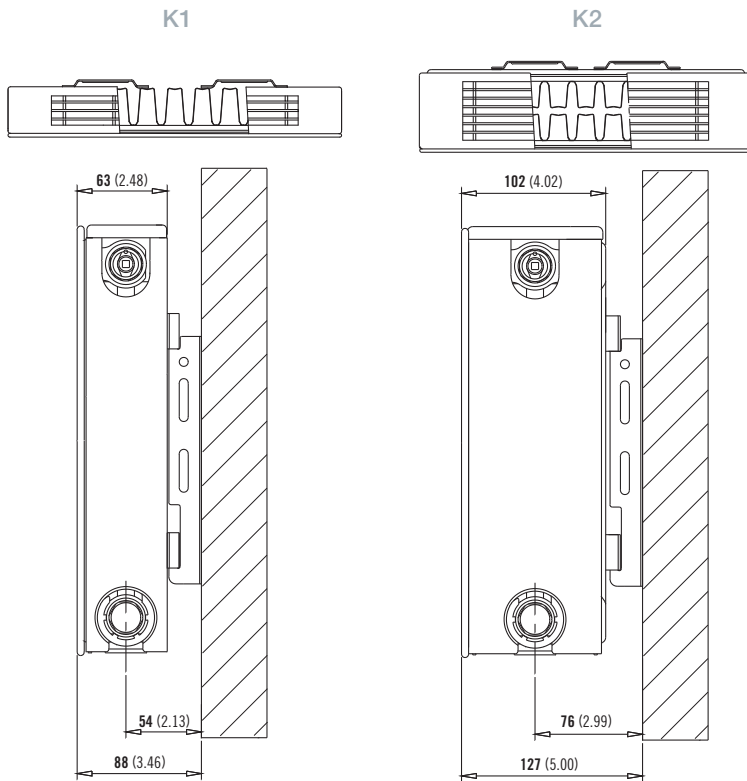
500	15	-	-	-	7422205	230	784
1000	30	-	-	-	7422210	459	1567
1400	42	-	-	-	7422214	643	2195
2000	60	-	-	-	7422220	919	3134

30 Δt
(55/45/20°C)

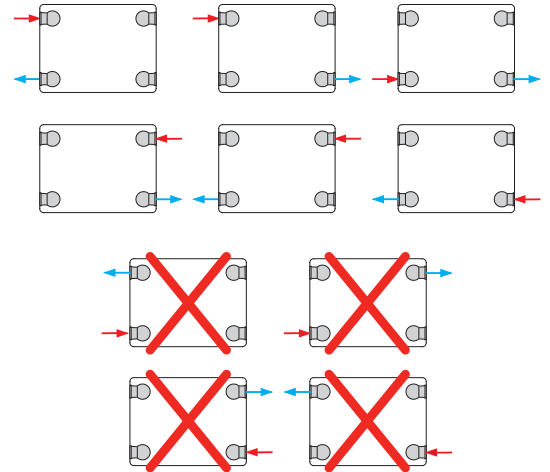
500	15	-	-	-	7422205	158	539
1000	30	-	-	-	7422210	316	1079
1400	42	-	-	-	7422214	443	1511
2000	60	-	-	-	7422220	632	2158

Compact with Style 300mm, 500mm & 600mm wall mounting information

All dimensions in mm. Inches in brackets. Floor mounting brackets available. See page 42.

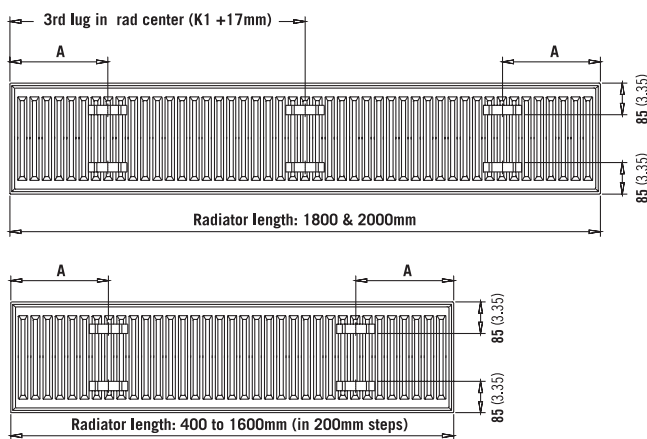


Compact with Style piping options



K1 and K2 lug positions

All dimensions in mm. Inches in brackets.

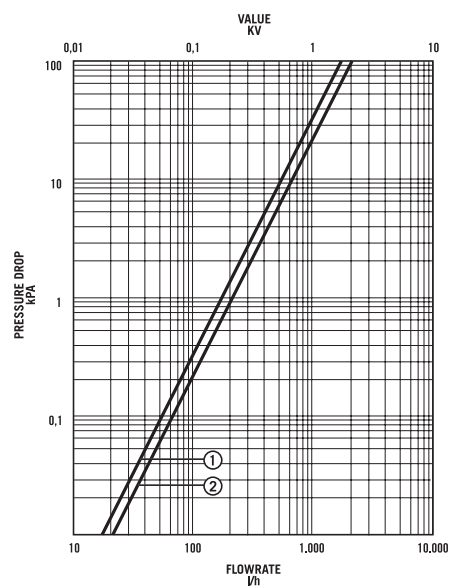


A

Length	K1		K2	
	mm	in	mm	in
400mm	117	4.61	133	5.24
500 - 1000mm	150	5.91	133	5.24
1200 - 1600mm	283	11.14	267	10.51
1800 - 2000mm	3rd lug in rad. centre*			

*K1 + 17mm

Pressure drops

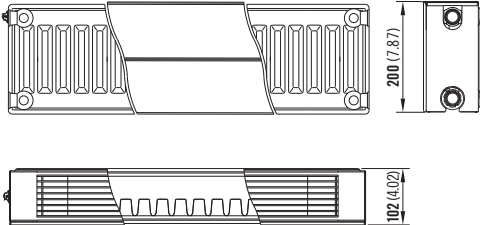


- ① Type 10 (P1), 11 (K1)
- ② Type 21 (P+), 22 (K2)

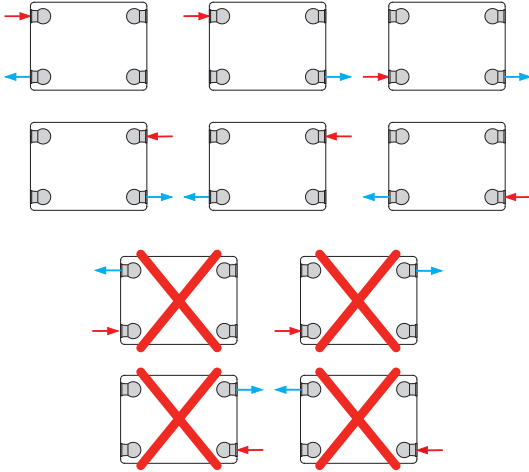
Compact with Style Lo-Line panel information

All dimensions in mm. Inches in brackets.

P+ and K2

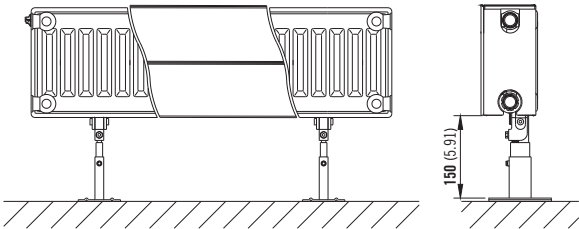


Compact with Style piping options



Compact with Style Lo-Line floor mounting information

All dimensions in mm. Inches in brackets.



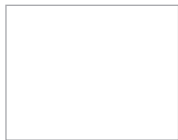
Floor mounting bracket comes as standard (200mm only)

colourful *inspiration*

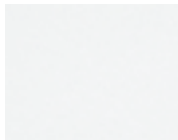
A shade for every room, for every interior. Opt for warm elegance, baroque ambience or modern minimalism. With Stelrad, you can heat your home in colour. Choose from a full range of stylish radiator colours.

Below colours for Compact with Style

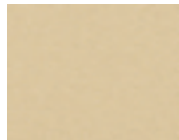
Natural Colour



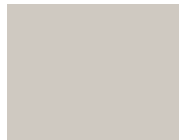
NT110
Papyrus white



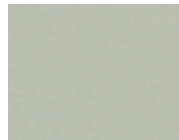
NT120
Pearl white



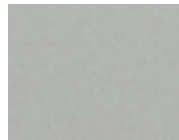
NT130
Champagne



NT140
Beige



NT150
Beige grey



NT160
Pebble grey



NT170
Quartz grey



SN110
Cream white



SN120
Cream



SN130
Mocca



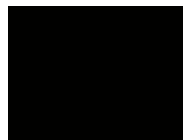
SN140
Bordeaux



SN150
Sepia



SN160
Pale blue



SN170
Black

Metallic Colours



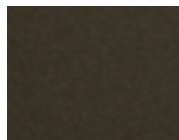
ML110
Dove grey



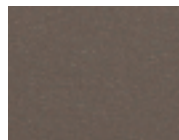
ML120
Titanium grey



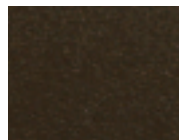
ML130
Blue grey



ML140
Granite



ML150
Cappuccino



ML160
Terra brown



ML170
Graphite black

RAL Colours



A1004
Golden yellow



A2003
Pastel orange



A3002
Carmine red



A3003
Robin red



A5002
Ultramarine blue



A6018
Yellow green



A7001
Silver grey



A7011
Iron grey



A7016
Anthracite grey



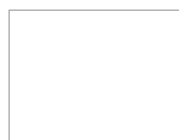
A7030
Stone grey



A7035
Light grey



A8017
Chocolate brown



A9003
Signal white



A9005
Jet black

Please note: When a coloured radiator or radiators over 2 metres have been ordered they cannot be cancelled or returned. All colour radiators have a 6 week lead time.

To request a colour chart and details of how to order please email marketing@stelrad.com