

spanlite

MAKING LIGHT WORK

Enlightened vision

Spanlite's mission is to provide architects and lighting designers with the tools to realise their creative vision. Over the years we've continued to develop LED lighting and display technologies to make this easier, providing elegant solutions to every lighting project we become involved with.

Our ever-growing knowledge and resources assist with all aspects of your project, from early-stage concepts and CAD drawings through to production and installation. We take the pressure off, leaving you safe in the knowledge that everything will simply work.

Have a look through the brochure to see what we've been doing and how we do it. From dynamic feature walls to illuminated stretch ceiling panels to edge-lit glass, find out how Spanlite can help make light work for you.

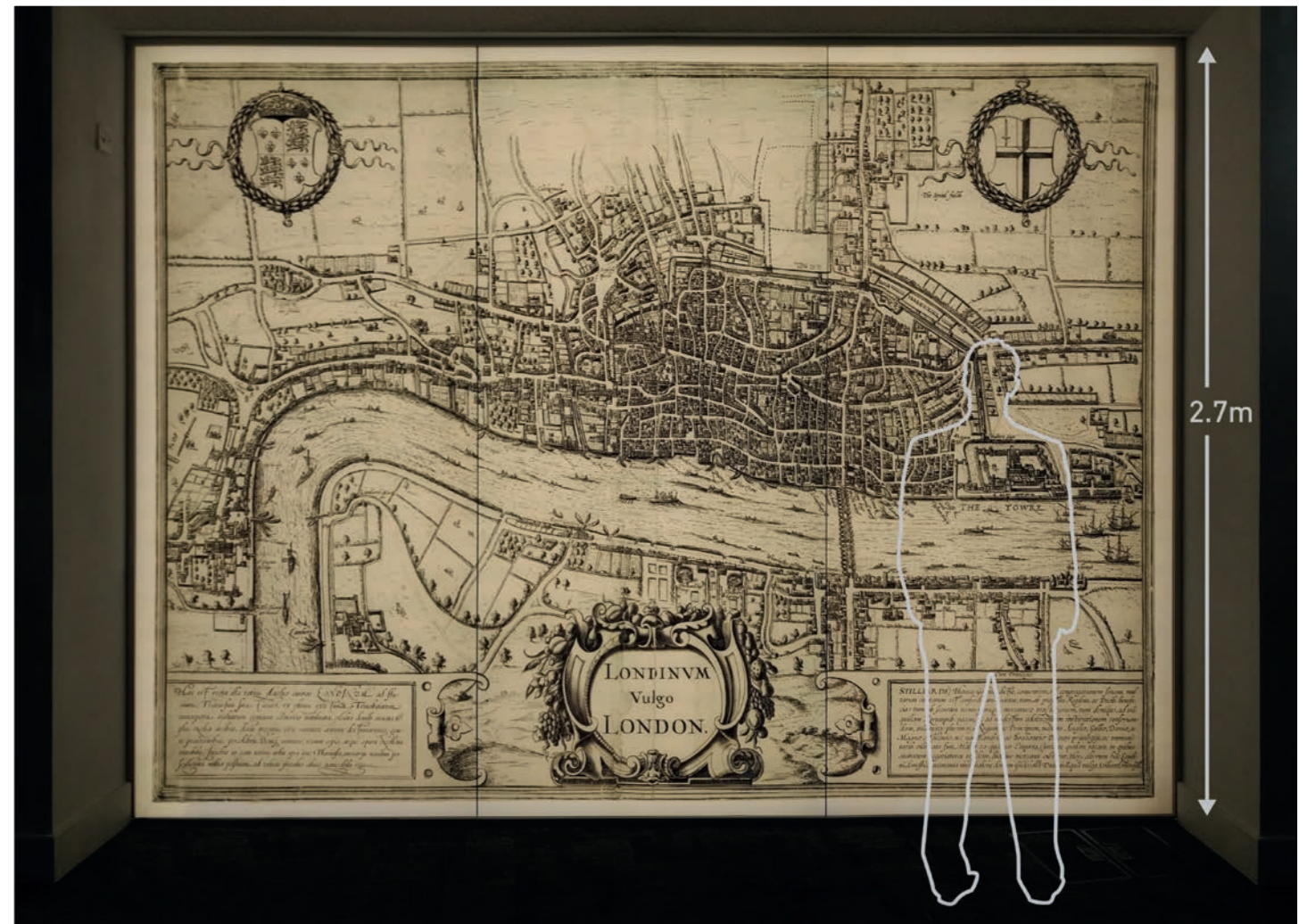
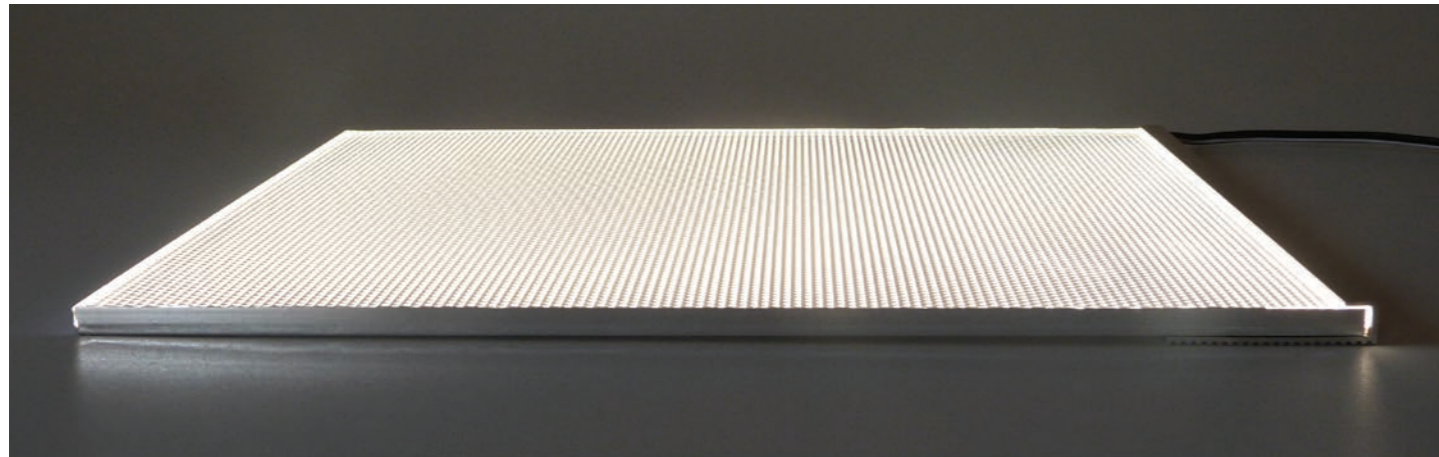


Spanlite sheet – a trick of the light

The 'wow-factor' of our LED light sheet panel has always been the same: our system can edge-light over greater distances than other similar technologies, whilst still maintaining an even spread of light. No dimming in the middle, no hot-spots at the edge, no tailing-off of light. The secret's in the light-distribution matrix, a reverse-applied digitised pattern, calibrated for each panel size.

As its name suggests, Spanlite Sheet is very thin. The heatsink channel that contains the LEDs, the light sheet itself and also a reflector panel, are together only 10mm thick. This low-profile allows them to be positioned behind translucent materials when available depth is limited. For applications where there is more depth behind the material being illuminated, a back-lit array of LEDs can be used to create even illumination to the same effect.

Spanlite Sheet can illuminate any translucent material, such as decorative glass, graphic displays and natural finishes including onyx and marble. An individual panel will comfortably light up to 2.7m in height – evenly – using just one row of LEDs. Using two rows it can light even further.



2.7m of even illumination using just one row of LEDs, hidden in the ceiling void. Bathrooms at Crown Plaza hotel, London.

A back-lit array illuminates Stratum Image Glass panels depicting an old map of London. Cavendish Venues, London

Stratum Image Glass

Illuminating natural stone finishes such as onyx and marble slabs comes with its own set of challenges. That's where Stratum Image Glass comes in.

Stratum Image Glass is a toughened glass laminate containing an image, suitable for back-lighting. The image can be anything – a photo, original artwork, a frit pattern, text, or a combination of these. We specialise in producing large format, high-resolution images of exotic marbles and onyxes, that simulate the natural product when encapsulated in toughened glass.

For designers of large projects such as hotels, this technology solves the challenge of how to guarantee visual consistency across the whole scheme. Stratum Image Glass gives aesthetic control back to the designer, and substantial savings to the client.

Benefits:

Cost Less expensive than natural marble or onyx.

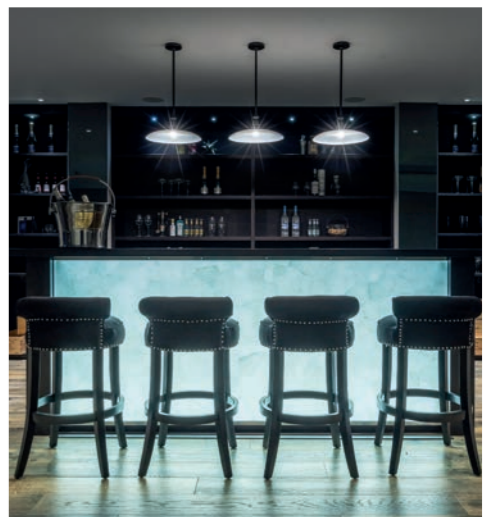
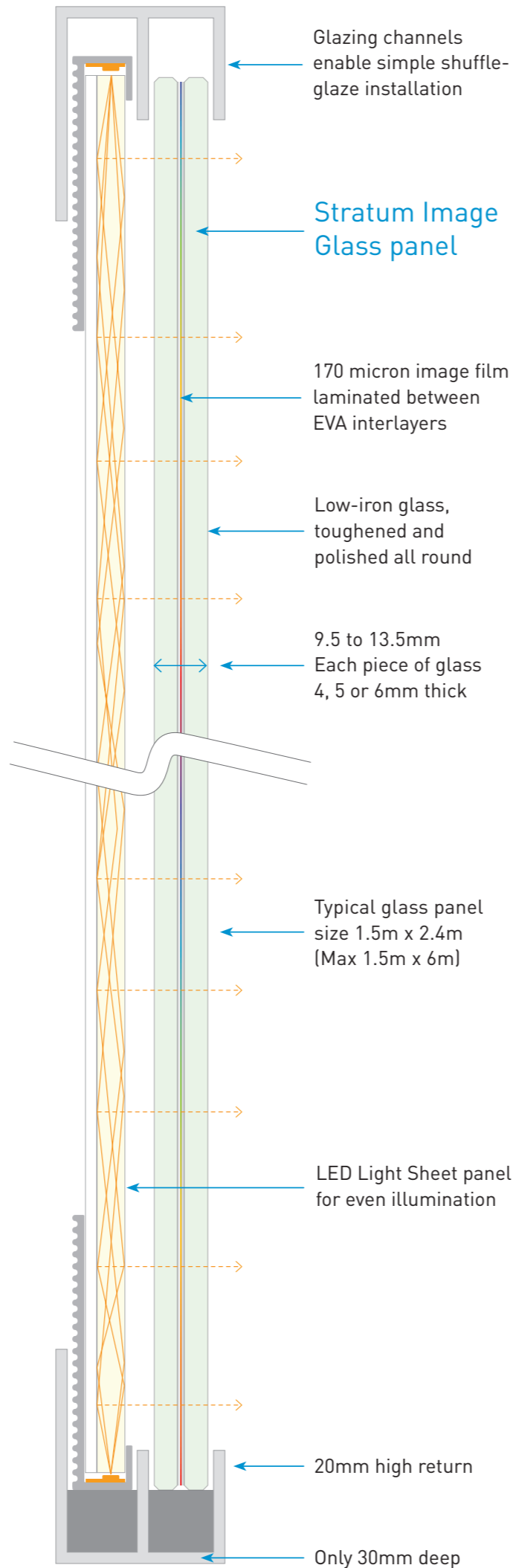
Colour ... Retouch and colour-correct the image to desired effect.

Effect Flip the image to recreate effect of book-matched stone.

Size Many natural stone finishes cannot be used at any great size due to delicacy – no issue here.

Eco No depletion of natural resources.

Use Suitable for internal or external applications.



Onyx and marble image library

To recreate the look of natural finishes for large-scale features, large-scale images are an obvious necessity. Online searches can provide all sorts of useful reference material, but finding images that will print at the required size and retain realistic detail is not so straightforward. Even so-called 'extra-large' sized images from image libraries won't do for a door-sized panel. As the old adage says, if you want something done properly, do it yourself.

Spanlite has access to the UK's – if not some of the world's – rarest and most exclusive slabs of onyx and marble. We produce our own unique imagery by taking multiple high-resolution photos of slabs, and retouching them together. This results in imagery that can be faithfully reproduced as Stratum Image Glass at sizes over 3m x 2m per individual panel.

The quality means you can have a wall of glass that looks just like backlit onyx – even when you're right next to it – and by using images instead of the natural finish itself, we can guarantee visual consistency across the whole project. Our studio service also provides full creative support – to retouch, colour-correct and optimise imagery to meet your design intent.



Above: one of the rare slab storage facilities that Spanlite has access to.



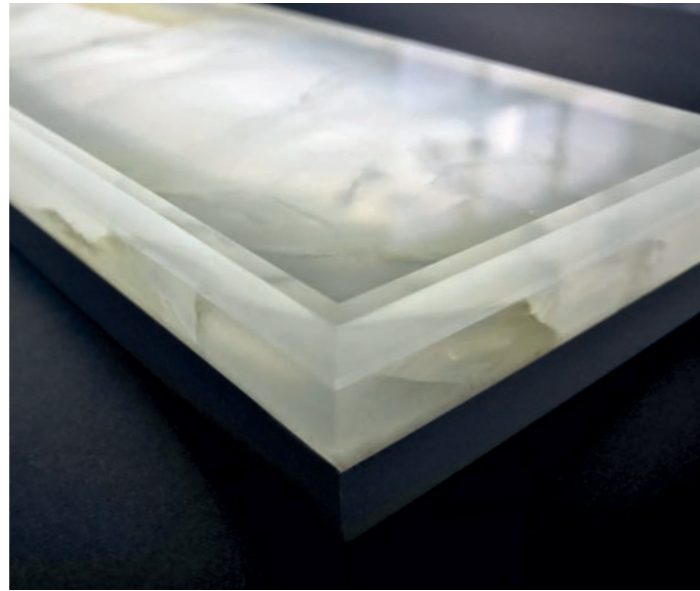
Right: Tanzanian Onyx slab detail, from original Spanlite photography.

Stratum Stone

If your project demands the authentic natural finish of real onyx or marble, choose Stratum Stone. Beautiful, natural stone, laminated to low-iron glass and highly polished, designed to be back-lit.

The stone panel and glass are laminated together using a clear epoxy. This interlayer can include a coloured filter to alter the colour of the stone when the panel is illuminated. This can help to enhance and complement an existing colour scheme in the environment where the panels are due to be displayed.

There are three types of Stratum Stone. The single option is ideal for back-lit walls, with glass protecting and stabilising the stone behind. The double option provides a double-sided-wall solution, each side protected by a panel of glass. Both single and double options have a perfectly clean edge, cut and polished via water-jet after the stone and glass are laminated together.



Single

Typical thickness

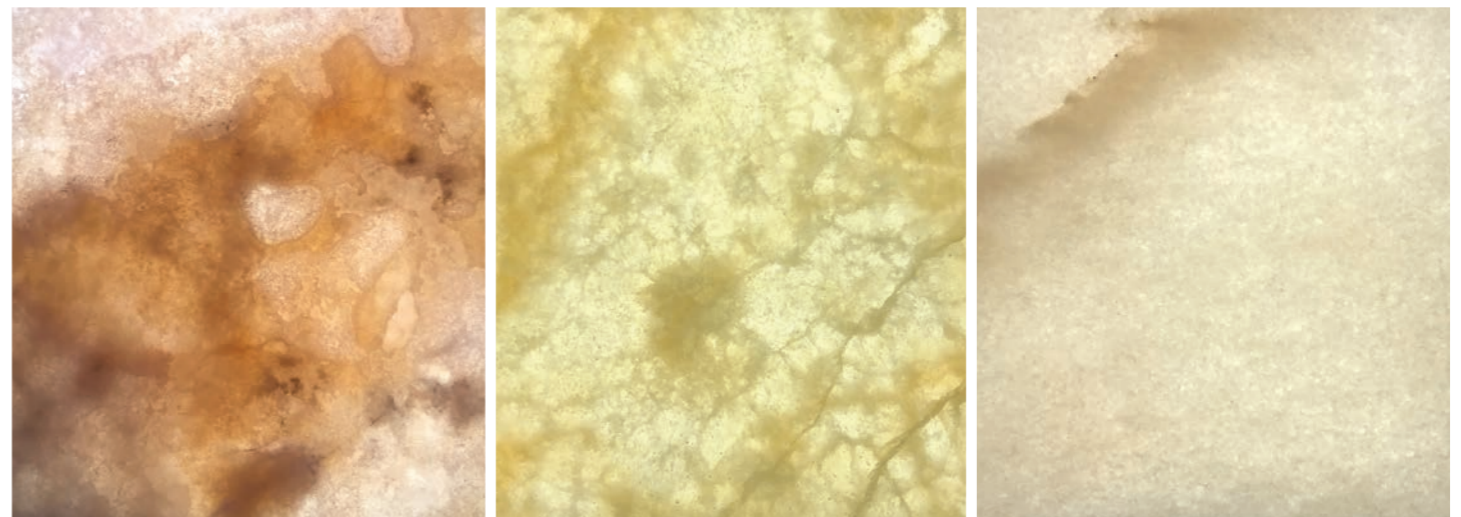
Glass	4-6mm
Epoxy	2mm
Stone	6-10mm

Double

Glass	4-6mm
Epoxy	2mm
Stone	6-10mm
Epoxy	2mm
Glass	4-6mm

Toughened glass

For back-lit stone worktops or applications where toughened glass is required, the glass and stone are cut to size before laminating together. In this instance it is necessary to bond the edges with 6mm wide, clear VHB (very high bond) tape.



Illuminated bar-top at the exclusive Dadong restaurant, New York City.

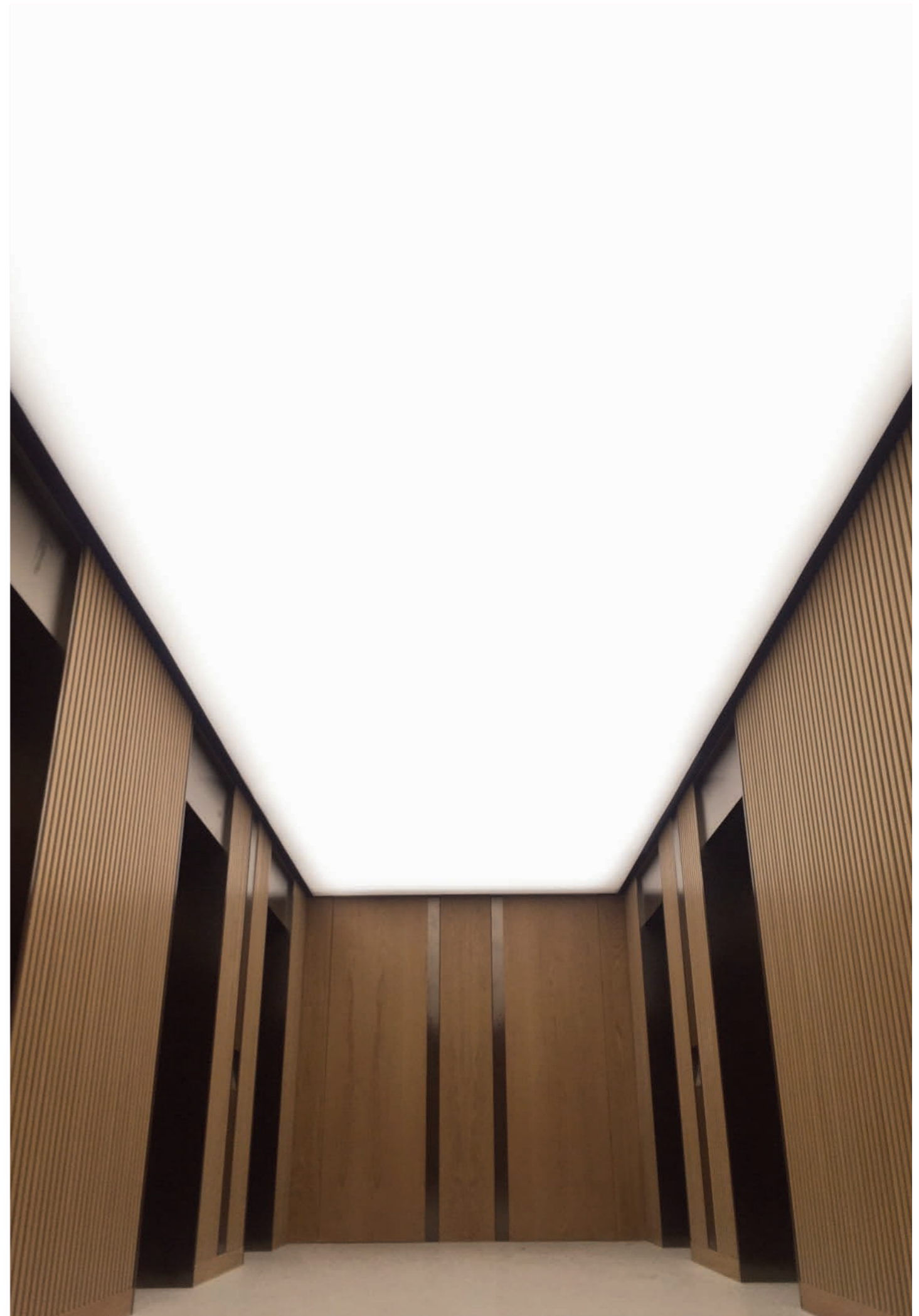
Our library of Stratum Stone is regularly updated. Contact us to find out about the latest panels available.

Illuminated Ceilings

Our range of illuminated ceiling solutions includes back-lit stretch fabric, producing smooth, even light distribution across the entire ceiling. Panels can be fitted flush to the ceiling level as in the picture to the right, or as a floating ceiling raft as in the private gym image below. Acoustic dampening options are also available.

A back-lit LED array can be used to evenly illuminate the fabric, but if there is insufficient depth available, such as a cramped or non-existent ceiling void, there are low-profile options that feature edge-lighting technology to fit flush with the ceiling surface.

Lighting can be controlled with 'intelligent' auto-dimming features, colour-change, dynamic white capabilities and more. Using different colour-temperature white LEDs, it's possible for bright, cool illumination during the day to gradually change to warmer, softer light as the evening progresses. This can be particularly helpful in maintaining a solid circadian cycle for office workers, promoting health and alertness in the workplace.

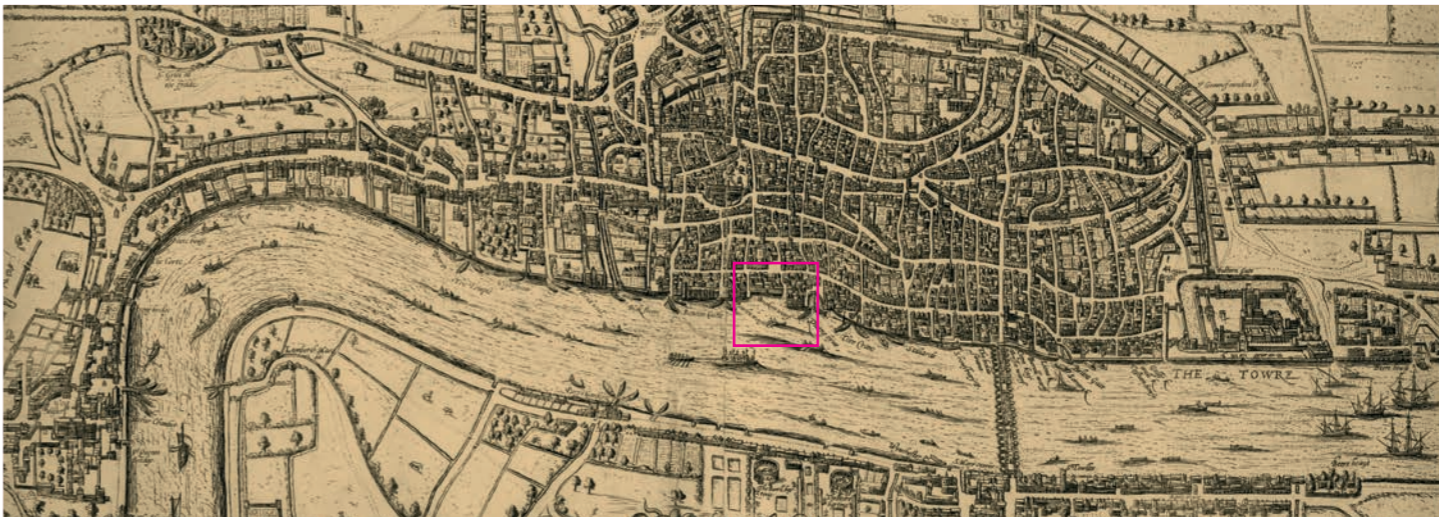
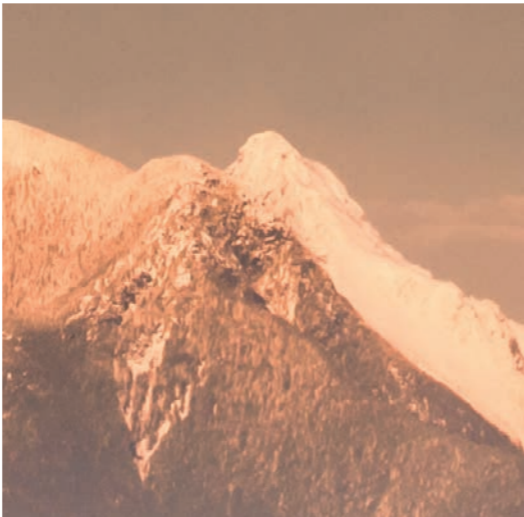
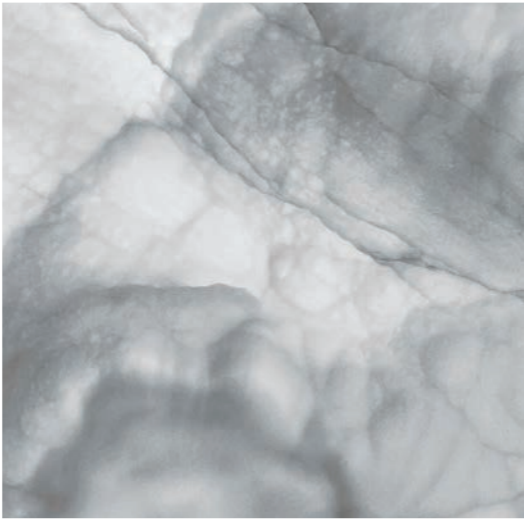


Large format imagery

Spanlite's unique image libraries include super-high-resolution shots of marble and onyx slabs that can't be found anywhere else. These make it possible to create large-scale back-lit feature walls depicting expensive natural finishes for certain applications where authentic stone simply can't be used. The cost, size and fragility of many exotic stone slabs can limit their potential for use in feature walls or large back-lit wall panels.

But it's not just marble and onyx images we offer. We've teamed up with Michael Banks and Eiko Jones, both leading lights in the field of large format images. Michael specialises in abstract photo-art, with a huge library of images that have been used at sizes up to 8m wide. Eiko takes beautiful photos of the natural world - many at panoramic ratios that are perfect for wall and corridor display - at sizes approaching 40,000 pixels wide! We're proud to offer you back-lit solutions to display these superb images in all their glory.

Another resource we offer is an impressive library of map images, again at immense sizes suitable for large back-lit display. The resource includes maps from all over the world, dating as far back as the 16th Century. Map images are not only interesting to study, but also convey a refined, knowledgeable and articulate aesthetic, perfect for corporate and hospitality applications ranging from boardrooms to bars. Full of detail and historical significance, these images really come to life when back-lit, and at this sort of scale the resulting effect is simply amazing.



White Onyx

Gold 4 - Michael Banks

Coast mountains - Eiko Jones

16th Century map of London



A myriad of colour

Spanlite's illuminated feature wall in the reception at Cannon Place was built as part of the redeveloped Cannon Street Station site in the City of London.

The 1,200 sq ft Spanlite feature wall incorporates 90 panels, each edge-lit by two rows of Cree RGBW LEDs. The light sheet panels provide perfectly even back-lighting for 90 slabs of Glaskeramik recycled glass.

The 12,000 colour LEDs are addressed by DMX, with each strip individually controllable allowing colour changes to flow through each of the panels, producing spectacular effects on demand.

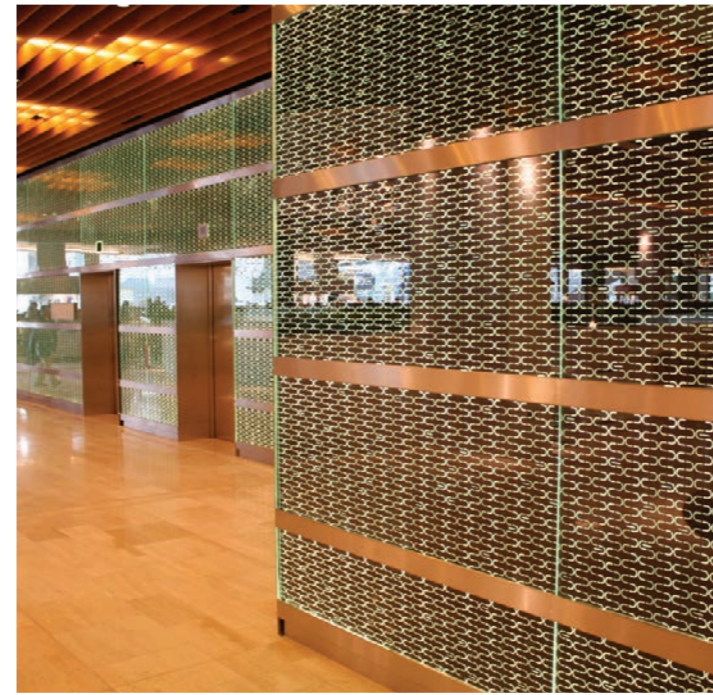
The lighting is programmable via the internet, giving the client freedom to update or change the lighting sequence with the minimum of effort, and from anywhere. It's even possible to create text messages that display across the wall.

Westfield Centre, Shepherd's Bush

Using printed glass edge-lit with white LEDs, Spanlite created an eye-catching feature wall covering more than 200m² over two floors in the Café Court of this shopping centre.

Private residence gym, UK

A back-lit Muhammed Ali feature covers one wall in this basement gym, with four panels of light sheet illuminating corresponding panels of Stratum Image Glass containing the image of Ali.



500 Brook Drive, Reading

The Green Park business complex is home to five floors of 3m high illuminated walls using Glaskeramik reconstituted recycled glass and back-lit using Spanlite's edge-lighting technology.

Tower 42, City of London

Mounted behind the frosted glass facade, light sheet panels illuminate the sweeping reception desk at this prestigious city address. Smooth and efficient back-lighting.

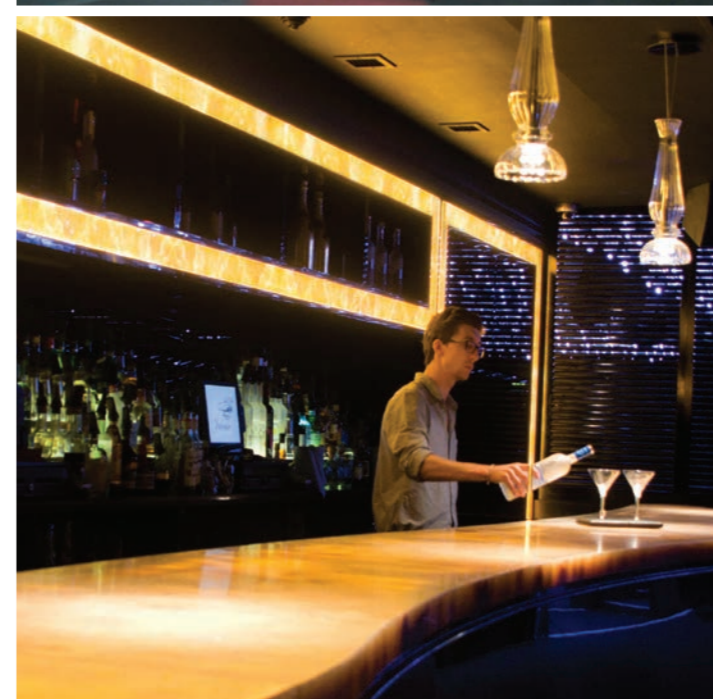


Jalouse Nightclub, London

Stratum Image Glass panelling recreates the effect of back-lit Honey Onyx at this exclusive Mayfair nightclub. The panels decorate the bar area and snake across the floor in other parts of the club.

Lo-Profile, Wardour Street, Soho

Edge-lit panels set into the ceiling and walls have dramatically enhanced the ambience and dynamism in Wardour Street's flagship Lo-Profile night club in London's Soho.



Illuminated bar front, London

A dimmable, back-lit solution for a bar front in a high-spec private residence, using Concetto Pure onyx imagery. The light sheet panel and image panel simply 'lift and drop' into glazing channels.



San Carlo restaurant, London

San Carlo's flagship London restaurant. Faux 1930s skylight designed with warm white light sheet and antique brass. The whole installation is less than 50mm deep and is fully maintainable.



Freshfields, London

Cool white LEDs form a back-lit array to illuminate the 'bamboo glass' feature wall in the basement gym of Freshfields Bruckhaus Deringer. A bespoke sliding mechanism allows access to the LEDs.



Feature wall, Luton airport

Dynamic colour-changing feature wall and signage in the VIP FASTTRACK area. Installed airside by Spanlite, 100 addressable RGBW lightsticks create animated effects across the laminated glass surface.



Westfield Centre, Shepherd's Bush

Edge-lit glass provides the imposing feature for Sky's dynamic 'Iconic' scheme in London's Westfield shopping centre. Each panel is digitally printed with a ceramic ink dot pattern.



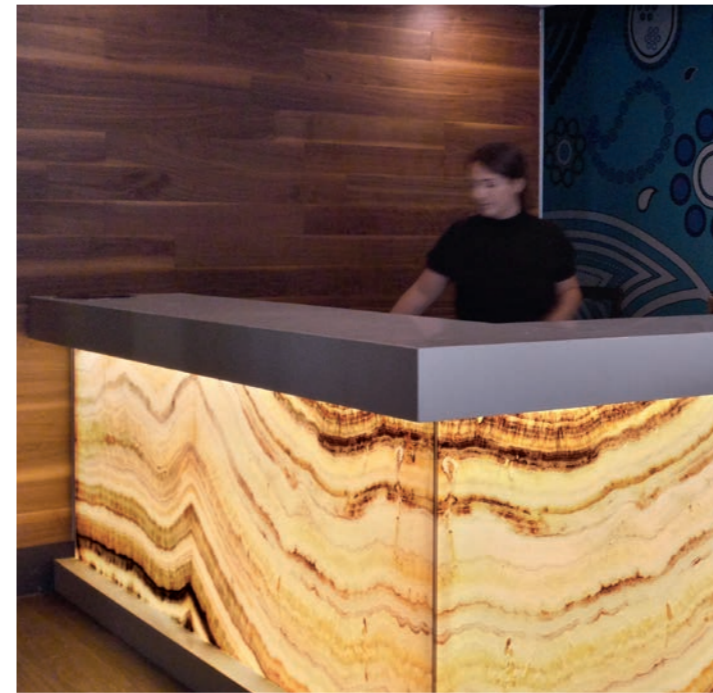
45 Park Lane, London

Stratum Image Glass depicting Calacatta Gold marble, each sized approximately 2m x 1.8m. Each is back-lit with a single Spanlite Sheet panel. Installed throughout the hotel's 50 washrooms.



Bindia Indian Bistro, Toronto

As part of a recent expansion, the new bar in this trendy, St Lawrence area bistro is clad in huge back-lit Stratum Image Glass panels, bringing a warm focus to the VIP dining space.



Backlit map image in vodka bar, Toronto

A back-lit feature displaying a map of Russia, adorning the VIP room wall of the extravagantly furnished Pravda vodka bar. Custom-framed to include the LED light-sheet panel.



Blackpool Victoria Hospital, UK

Colour-changing light sheet panels illuminate Sarah Galloway's glass artworks in the Blackpool Victoria Hospital. RGB LEDs allow the light sheet panels to change the colour of the glass.



Swimming pool wall panels, London residence

Illuminated panels depicting highly-detailed white onyx imagery surround this opulent private pool. Produced using Spanlite Sheet edge-lighting technology and Stratum Image Glass panels .



BSkyB, London

Edge-lit glass walls and doors to four studios at BSKyB's head office in Isleworth, West London. Customised glazing channels contain dynamic LEDs in red, green, blue and amber (RGB-A).



Heathrow Approach, London

Illuminated timber fins form a divide behind the reception desk at the Heathrow Approach offices, plus numerous 10m-high barrisol-clad columns, lit from within using LED light sheet.



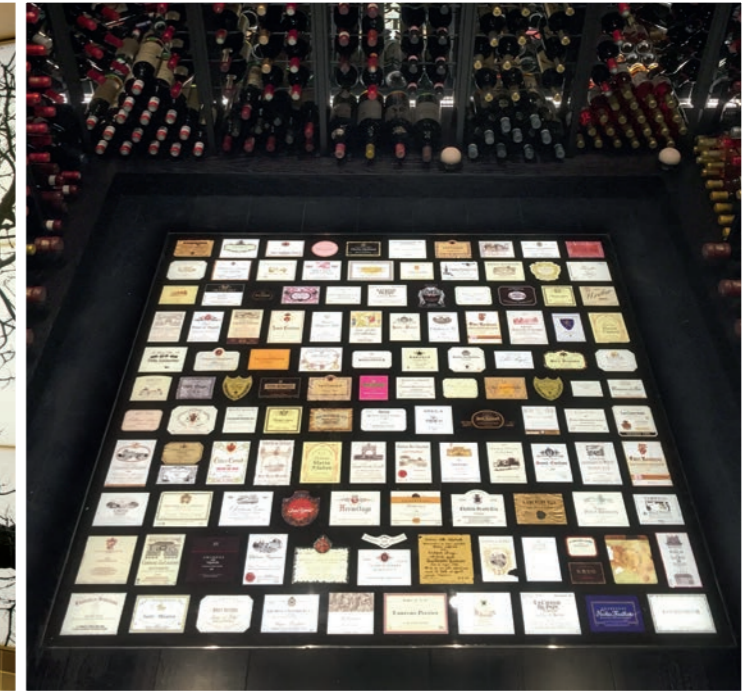
Howick Place, London

A grid-system graphic display of silhouetted branches in the foyer of a central London apartment block. Illuminated with a back-lit array of white LEDs – evenly lit and energy-efficient.



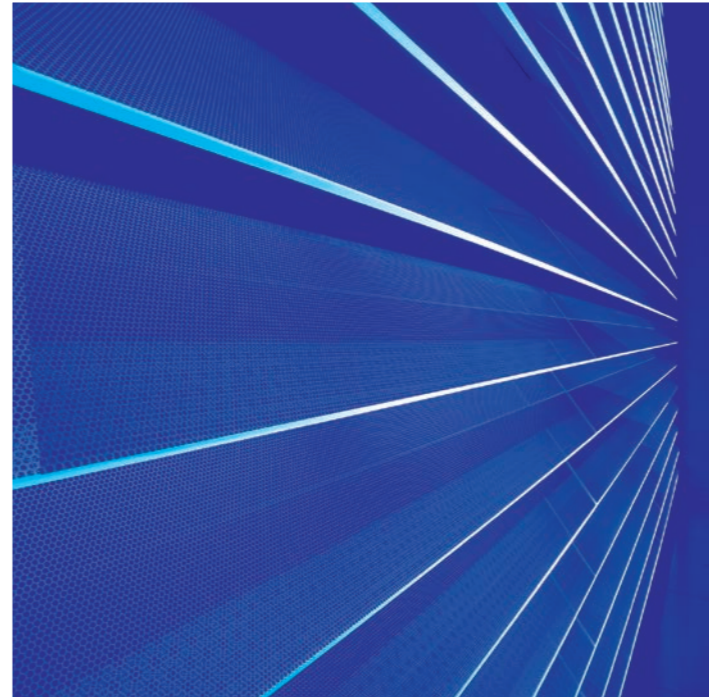
Floor panel, private wine cellar

Stratum Image Glass showing 120 fine wine and champagne labels, scanned from a private collection for this unique floor panel. Back-lit with light sheet to create a timeless store of memories.



Cannon Bridge House, London

A feature light wall in the reception area comprises 64 glass louvre blades with DMX controlled colour-changing technology, plus general area lighting in the form of high power LEDs.



Charles II Street offices, London

A polished oak frame houses batons of triple-laminated glass. Each set of 2m glass is lit with a single LED profile. Lighting continues inside the lift and across the front of the reception desk.



Back-lit wall feature, Aird House, London

Five evenly lit light sheet panels with opal acrylic diffusers are positioned behind exotic hard-wood slats, with the apartments' logo highlighted in the design with a polished 'A'.



Illuminated stone panel, London residence

Light sheet illuminates a premium Agate with golden inlay wall panel in a private residence. LEDs customised to 5700°K colour temperature achieve precisely the desired effect.



US law firm, Washington USA

Spanlite's custom designed 'flush frame' modular profile encapsulates white onyx panels of Stratum Image Glass, backlit with LED light-sheet. Panels are mounted using an adjustable hook and rail system to the rear providing perfect alignment.

Osram 4000K LEDs are dimmable from zero to 100% using Eldoled's Lineardrive 200 dimmed by client side 0-10V control.

The panel images use a white onyx texture from Spanlite's extensive image library, colour-corrected to reflect the tones of the local geology.



Odeon Leicester Square, London

This stunning mirrored feature wall leads customers up the stairs at the recently refurbished flagship cinema Odeon Leicester Square.

The custom framing and mounting system was designed, manufactured and installed within six weeks of order. The two-way mirrors were in three different colour tints, some with TV screens behind and others with DMX-controlled decorative LED linear lighting.

Spanlite worked closely with the main contractor to deliver the project on budget and on time. Phase two works included specialist bronze mirror glazing, integrating illuminated signage above the doors.





Sky Skills Studios

Spanlite were approached by David Atkinson Lighting Design (DALD), and asked to produce the edge-lit glazing for BSKyB's new Sky Skills Studios at Sky's main offices in Isleworth, West London.

The Sky Skills Studios consist of four fully functioning TV studios situated around a central area. The design and project management was led by RPM, Sky's design and events agency in London; and Platform, a Brighton-based agency specialising in 3D space design. For the lighting, RPM brought in David Atkinson (DALD), who specified Spanlite as LED edge-lighting specialists to oversee the Studio glazing panels.

Each Studio is accessible from the central area, and can be viewed through two apertures. One has a fixed glass panel, and the other a glass door and adjacent glass panel. The brief was to create and fit edge-lit single-pane glazing for each panel including the doors, with the ability to change colours – specifically to match the background colours in Sky's logo.

COLLABORATION

Working closely with RPM, Spanlite devised a solution and produced a working sample. This highlighted a colour issue – red light doesn't travel well through glass, whereas blue and green light does.

This creates problems when trying to illuminate in yellow for example, using red and green LEDs together. The result is yellow near the light source, but green in the middle of the glass. Spanlite overcame this by adding an Amber LED to the Red, Green and Blue (RGB-A).

SOLUTIONS

Spanlite designed the LED light-stick accordingly, and adapted existing aluminium glazing channels to house the LEDs. The glass was printed with a white ceramic ink dot pattern, to highlight the colour near the edges of the glass, to depict the name of each Studio on the corresponding door, and to ensure DDA compliance.

The channels were finished with custom-produced black anodised aluminium cover plates to match the door handles. Control of the LEDs is managed via DMX – Spanlite having housed and linked all the LED drivers in the floor void.

Colour-changing illumination sequences across the glazing are synchronised with the welcome video to stunning effect. Each Studio can be colour-coded, or all the panels can be set to a particular colour, or they can be set to change colour at the touch of a button. The result is a dazzling success – a dynamic feature at the heart of the design aesthetic.

TEAM

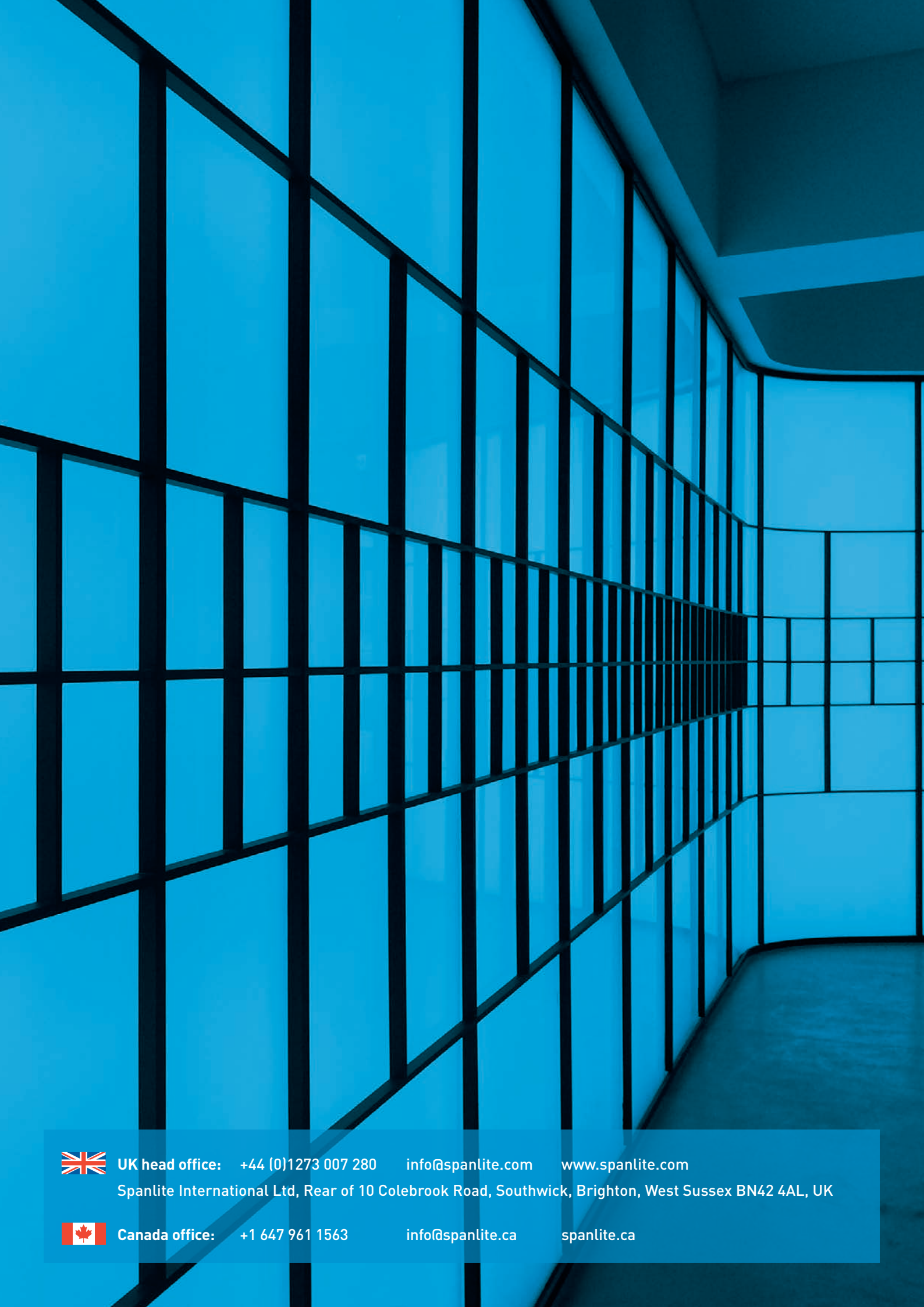
Client..... BSKyB
 Main Contractor..... Bovis Lend Lease
 Main Fit-Out Fireclad
 Lighting Design DALD
 Edge-lit glass Spanlite

Minerva House

Set in the heart of London's jewellery quarter, this £7m refurbishment sports a curved back-lit steel and glass feature wall in the entrance, with the same theme echoed throughout the building with illuminated panels in the washrooms on each floor.

Working from the outset with Ben Adams Architects, Spanlite developed the design concept and delivered the project in tandem with GPF Lewis. The DALI dimmable neutral white 4000°K lighting scheme provides the sole source of light in the entrance way. The colour temperature complements the brass detailing around the original lift.





UK head office: +44 (0)1273 007 280 info@spanlite.com www.spanlite.com

Spanlite International Ltd, Rear of 10 Colebrook Road, Southwick, Brighton, West Sussex BN42 4AL, UK



Canada office: +1 647 961 1563 info@spanlite.ca spanlite.ca