



SOTECH

SOTECH OPTIMA SHINGLES

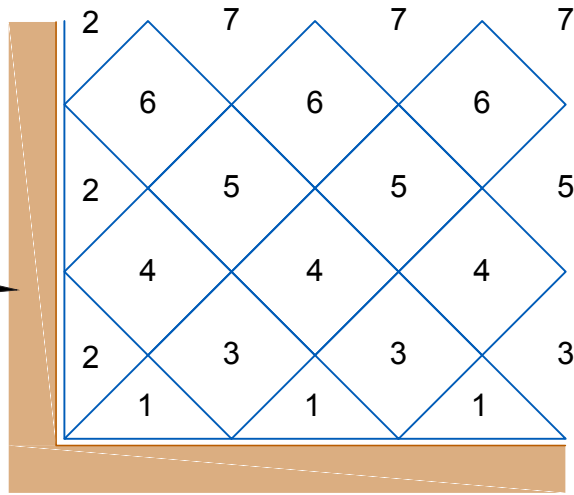


# Contents

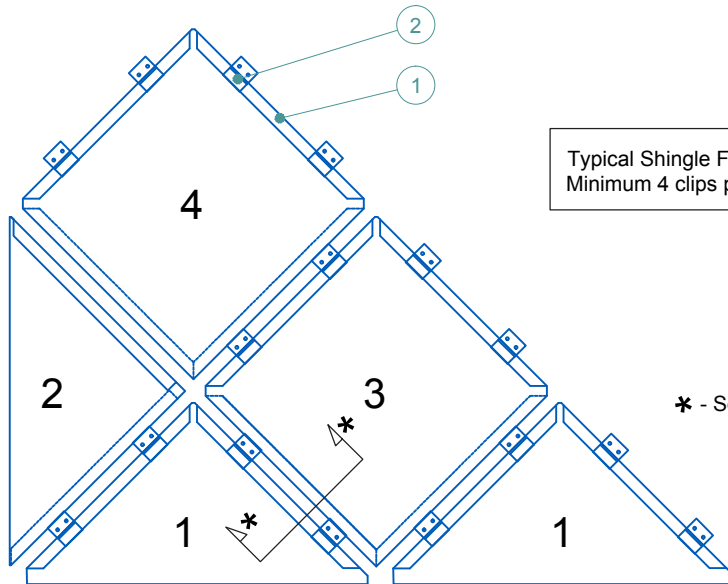
## Sotech Optima Shingles | Solid Aluminium System Details

3. Diamond Pattern Principle.....	(S-01)
4. Fixing Options.....	(S-02)
5. Fixing Options.....	(S-03)
6. Raking Interface Details.....	(S-04)
7. Left Starter Shingle Panel.....	(S-05)
8. Bottom Starter Shingle Panel.....	(S-06)
9. Bottom Starter Panel With Recessed Joint.....	(S-07)
10. Standard Shingle Panel.....	(S-08)
11. Corner Detail Options 1 & 2.....	(S-09)
12. Base Detail.....	(S-10)
13. Vertical Window Interface.....	(S-11)
14. Horizontal Window Interface.....	(S-12)
15. Curtain Wall Head Detail Interface.....	(S-13)
16. Curtain Wall Jamb Detail Interface.....	(S-14)
17. Base Detail With Insulated Panel.....	(S-15)
18. Vertical Window Details With Insulated Panels.....	(S-16)
19. Horizontal Window Detail With Insulated Panel.....	(S-17)
20. Curtain Wall Head Detail With Insulated Panel.....	(S-18)
21. Curtain Wall Jamb Detail With Insulated Panel.....	(S-19)
22. External Corner On Insulated Panel .....	(S-20)
23. Internal Corner On Insulated Panels.....	(S-21)

Indicative Perimeter Structure



Typical Partial Elevation With Numbered Shingle References



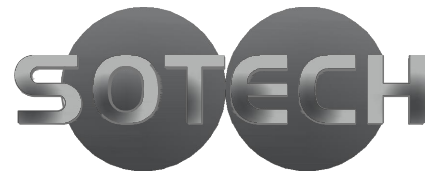
Typical Shingle Fixing Arrangement Minimum 4 clips per shingle.

\* - See Drg S-02 & 03 for fixing options.

- 1 Optima Shingle Panel. Finish to suit project.
- 2 Pressed Clip.

### Installation Sequence.

- 1 Base Panels
- 2 Side Panels
- 3 Square Panels
- 2 Square Panels Continued, 4, 5, 6 etc.....



Sotech Ltd  
 2 Traynor Way  
 Whitehouse Business Park  
 Peterlee County Durham SR8 2RU  
 Tel: 0191 587 2287  
 Fax: 0191 518 0703  
 www.sotech-optima.co.uk

Title: Optima Shingles  
 Diamond Pattern Principle

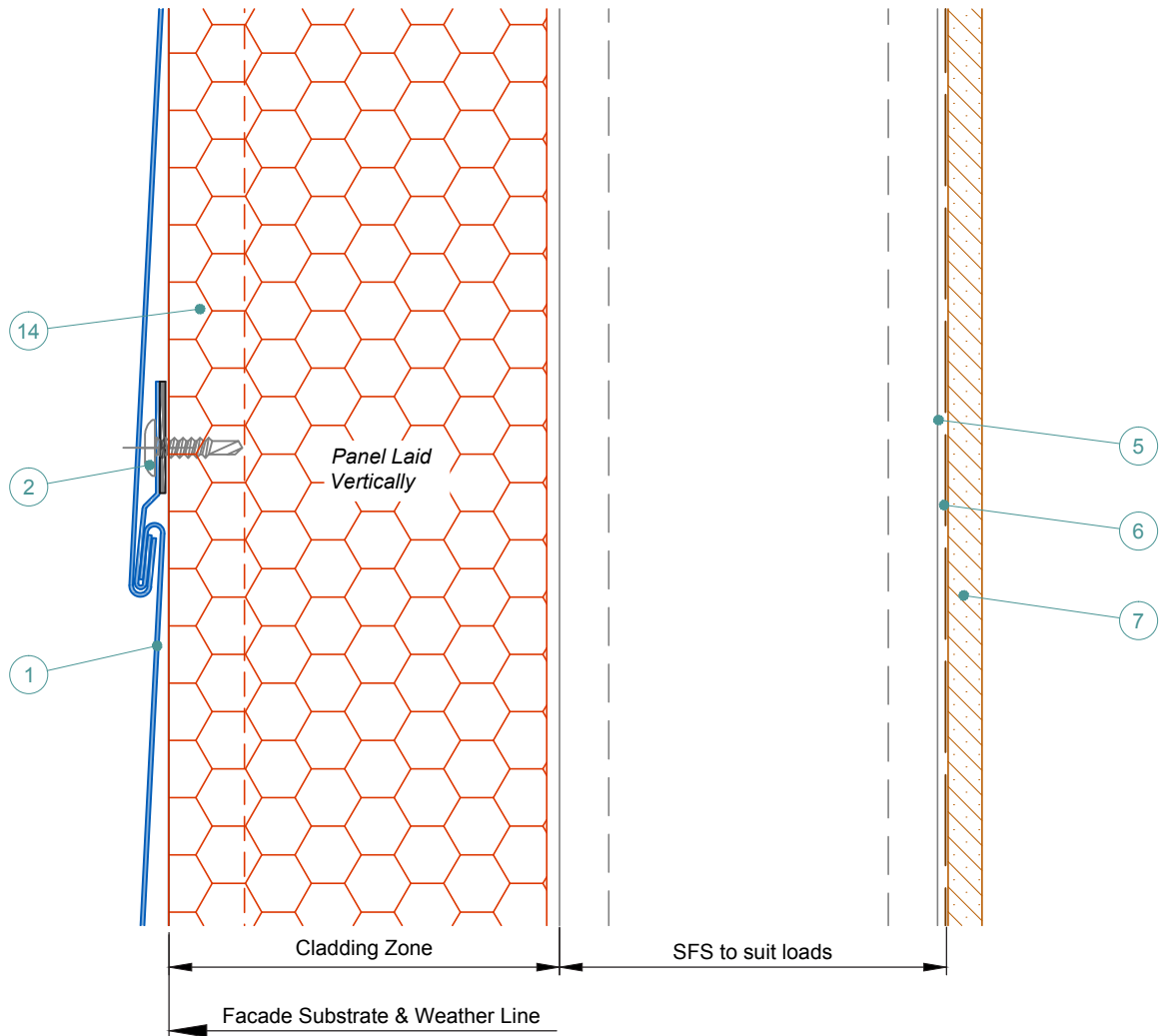
Drg No: S-01	Drawn By: DD	Date: 08.04.16
--------------	--------------	----------------

Scale: 1:16@A4	Checked By: Sotech	Rev: A
----------------	--------------------	--------

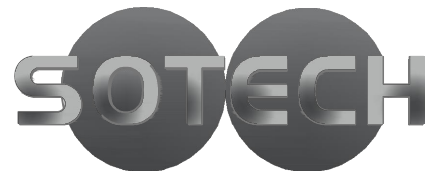


Insulated Panel Shown Indicatively. Ensure System Suppliers Installation Details are Adhered To.

### Option 3 - SFS & Insulated Panels With Direct Fixed Cladding



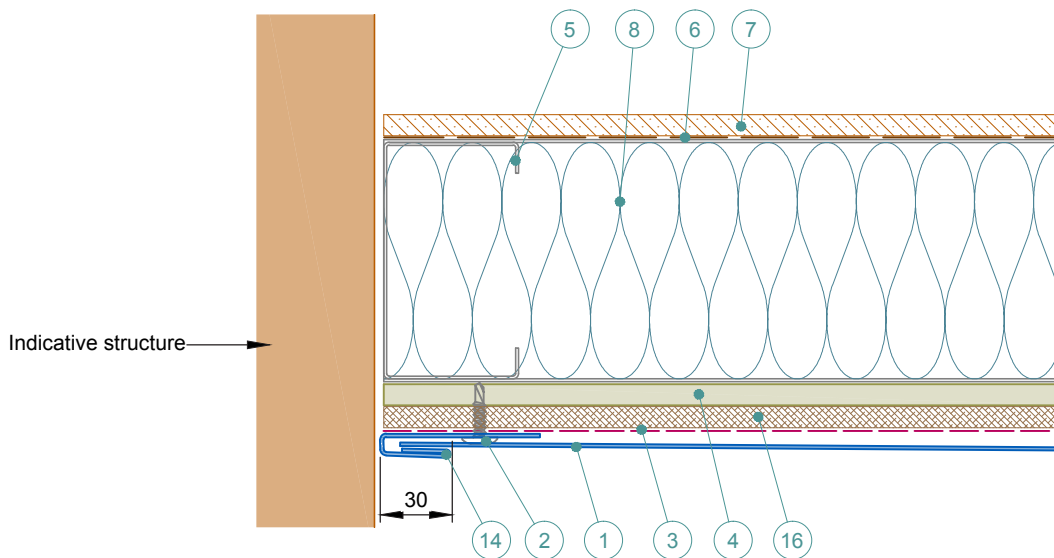
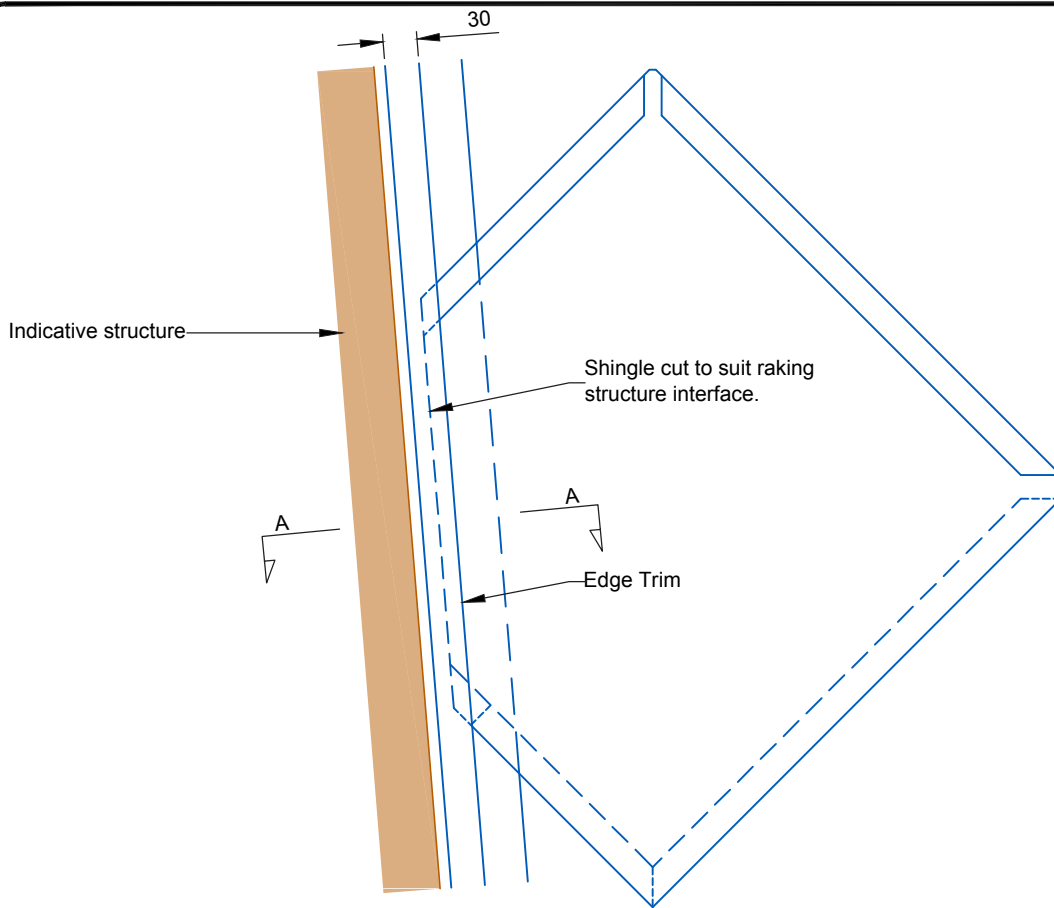
- 1 Optima Shingle Panel. Finish to suit project.
- 2 Shingle Pressed Clip With Small Screw or Rivet On Foam Pad - Project Specific.
- 3 Breathable Membrane. By Others.
- 4 Cementitious Board (or similar), thickness to suit specification. By Others.
- 5 SFS Substrate - profile size & centres to suit loadings. By Others.
- 6 V.C.L. - if required. By Others.
- 7 Internal Finish. By Others.
- 8 Insulation - If required. By Others.
- 9 Top Hat - Material & thickness to suit span. By Others
- 10 Tek fixing. By others.
- 11 Envelope Handsfree Bkt - to suit zone & ctrs to suit loadings.
- 12 Isolator
- 13 60x40 Angle.
- 14 Insulated Panel - thickness to suit U Value. By Others.
- 15 Compressible Foam Seal. By Others.
- 16 WBP. Thickness to suit span. By Others.



Sotech Ltd  
 2 Traynor Way  
 Whitehouse Business Park  
 Peterlee  
 County Durham  
 SR8 2RU  
 Tel: 0191 587 2287  
 Fax: 0191 518 0703  
 www.sotech-optima.co.uk

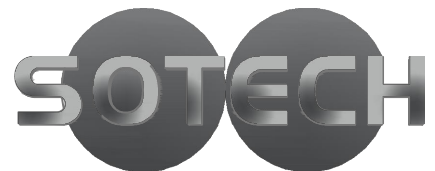
Title: Optima Shingles  
 Fixing Options

Drw No: S-03	Drawn By: DD	Date: 08.04.16
Scale: 1:2 @A4	Checked By: Sotech	Rev: A



VIEW A-A

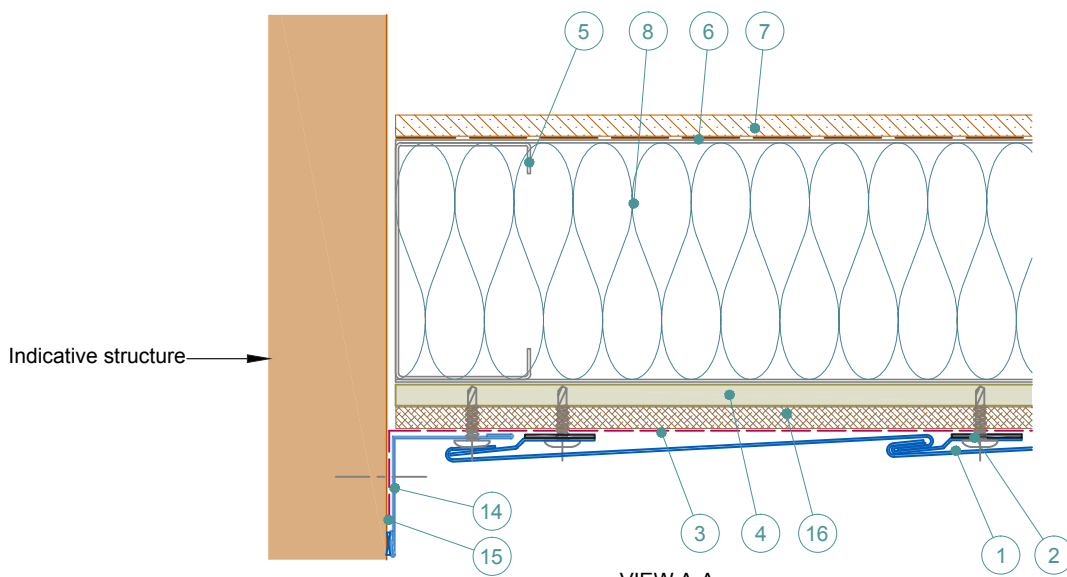
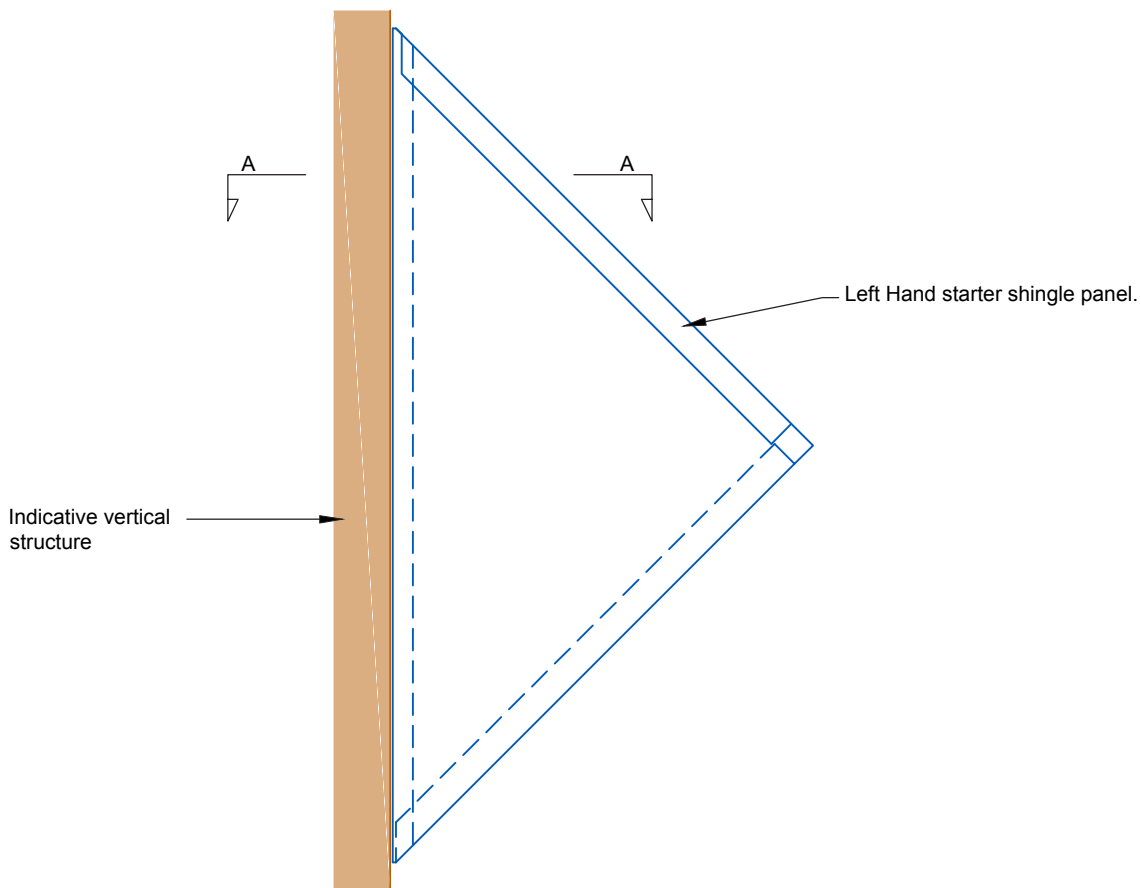
- 1 Optima Shingle Panel. Finish to suit project.
- 2 Shingle Pressed Clip With Small Screw or Rivet On Foam Pad - Project Specific.
- 3 Breathable Membrane. By Others.
- 4 Cementitious Board (or similar), thickness to suit specification. By Others.
- 5 SFS Substrate - profile size & centres to suit loadings. By Others.
- 6 V.C.L. - if required. By Others.
- 7 Internal Finish. By Others.
- 8 Insulation - If required. By Others.
- 9 Top Hat - Material & thickness to suit span. By Others
- 10 Tek fixing. By others.
- 11 Nvelope Handsfree Bkt - to suit zone & ctrs to suit loadings.
- 12 Isolator
- 13 60x40 Angle.
- 14 Edge Trim Pressing With Suitable Fixings For Structure.
- 15 Compressible Foam Seal. By Others.
- 16 WBP. Thickness to suit span. By Others.



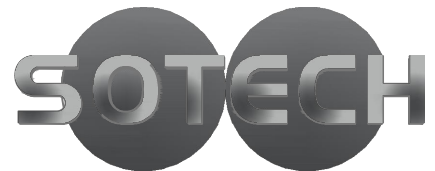
Sotech Ltd  
 2 Traynor Way  
 Whitehouse Business Park  
 Peterlee  
 County Durham  
 SR8 2RU  
 Tel: 0191 587 2287  
 Fax: 0191 518 0703  
 www.sotech-optima.co.uk

Title: Optima Shingles  
 Raking Interface Details

Drw No: S-04	Drawn By: DD	Date: 08.04.16
Scale: 1:3 @A4	Checked By: Sotech	Rev: A

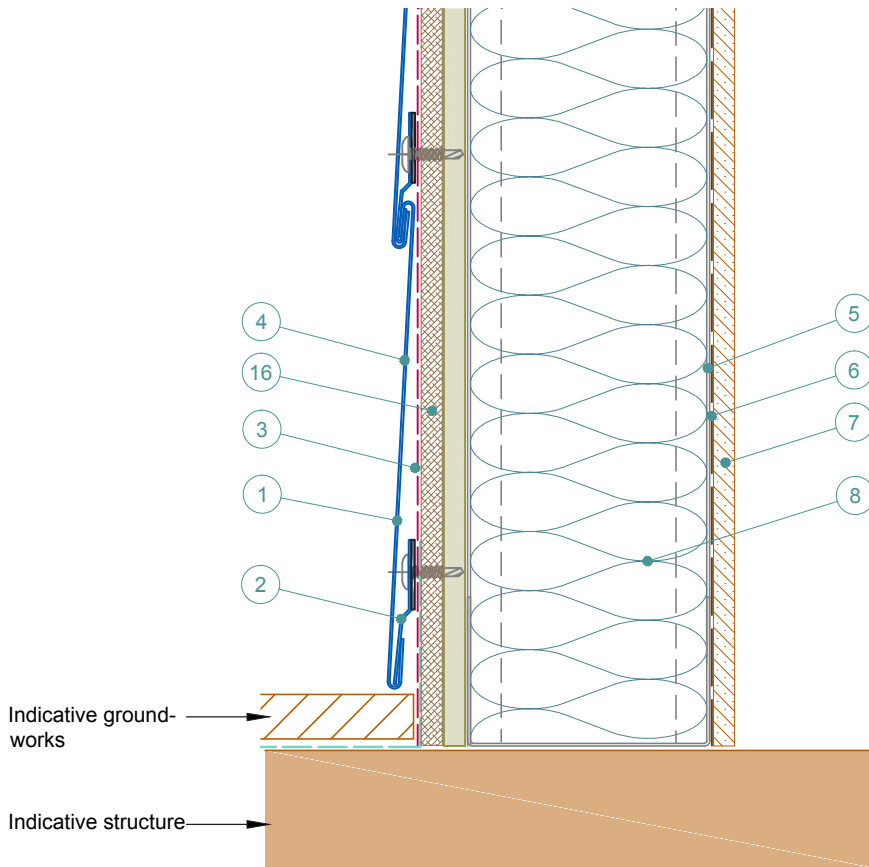
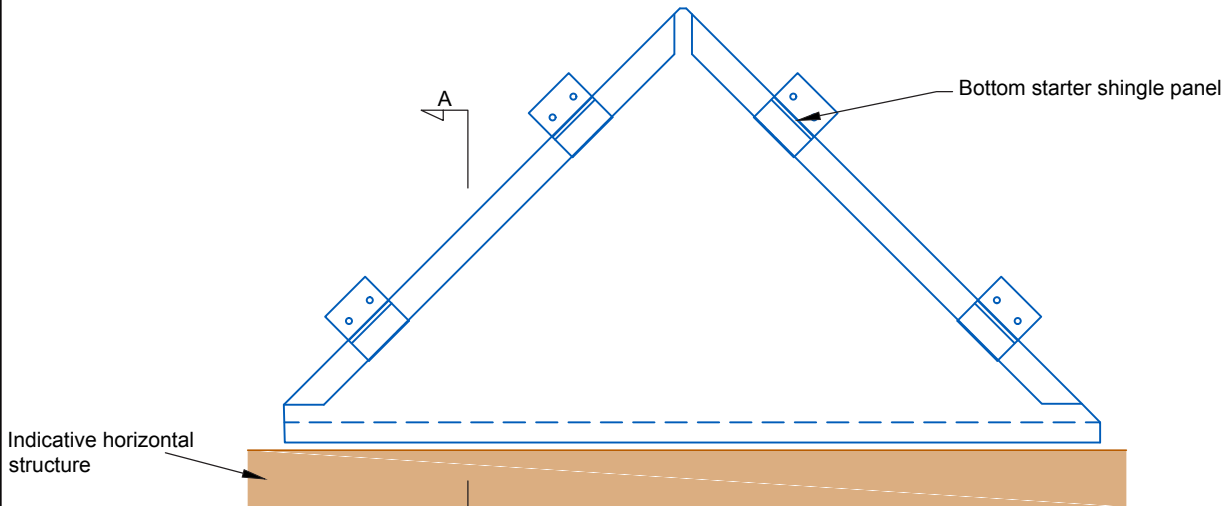


- 1 Optima Shingle Panel. Finish to suit project.
- 2 Shingle Pressed Clip With Small Screw or Rivet On Foam Pad - Project Specific.
- 3 Breathable Membrane. By Others.
- 4 Cementitious Board (or similar), thickness to suit specification. By Others.
- 5 SFS Substrate - profile size & centres to suit loadings. By Others.
- 6 V.C.L. - if required. By Others.
- 7 Internal Finish. By Others.
- 8 Insulation - If required. By Others.
- 9 Top Hat - Material & thickness to suit span. By Others
- 10 Tek fixing. By others.
- 11 Nvelope Handsfree Bkt - to suit zone & ctrs to suit loadings.
- 12 Isolator
- 13 60x40 Angle.
- 14 Edge Trim Pressing With Suitable Fixings For Structure.
- 15 Compressible Foam Seal. By Others.
- 16 WBP. Thickness to suit span. By Others.

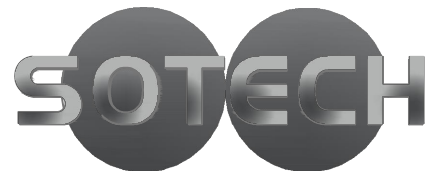


Sotech Ltd  
 2 Traynor Way  
 Whitehouse Business Park  
 Peterlee      Tel: 0191 587 2287  
 County Durham      Fax: 0191 518 0703  
 SR8 2RU      www.sotech-optima.co.uk

Title: Optima Shingles Left Starter Shingle Panel		
Dwg No: S-05	Drawn By: DD	Date: 08.04.16
Scale: 1:3 @A4	Checked By: Sotech	Rev: A



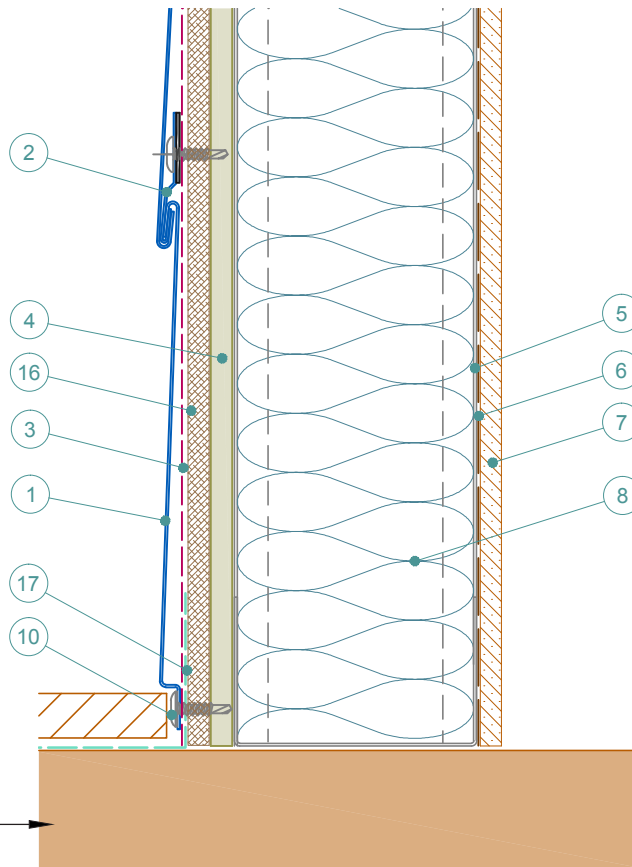
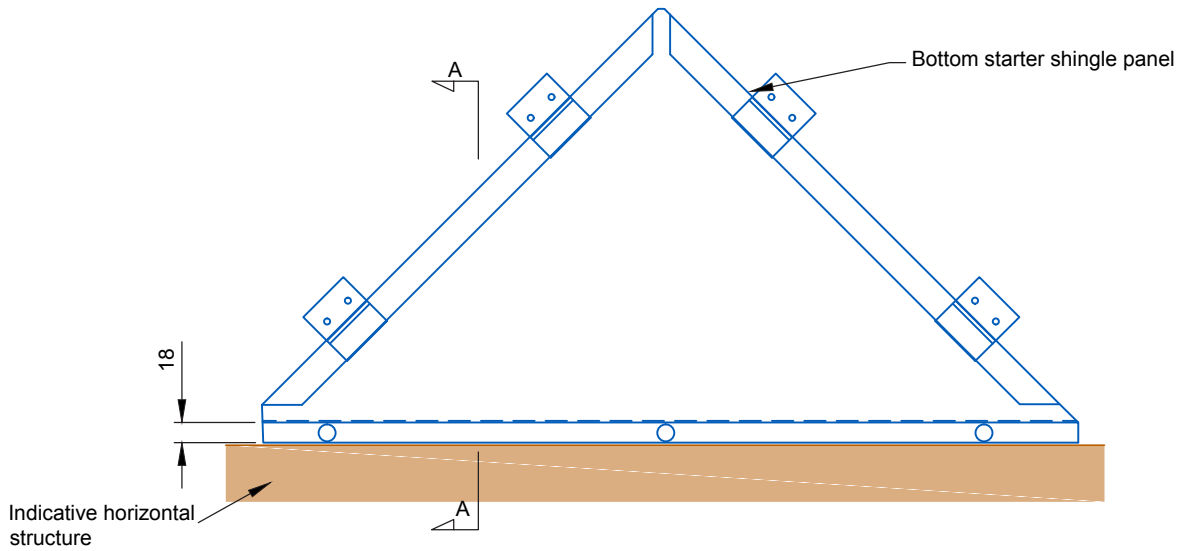
- 1 Optima Shingle Panel. Finish to suit project.
- 2 Shingle Pressed Clip With Small Screw or Rivet On Foam Pad - Project Specific.
- 3 Breathable Membrane. By Others.
- 4 Cementitious Board (or similar), thickness to suit specification. By Others.
- 5 SFS Substrate - profile size & centres to suit loadings. By Others.
- 6 V.C.L. - if required. By Others.
- 7 Internal Finish. By Others.
- 8 Insulation - If required. By Others.
- 9 Top Hat - Material & thickness to suit span. By Others
- 10 Tek fixing. By others.
- 11 Nvelope Handsfree Bkt - to suit zone & ctrs to suit loadings.
- 12 Isolator
- 13 60x40 Angle.
- 14 Edge Trim Pressing With Suitable Fixings For Structure.
- 15 Compressible Foam Seal. By Others.
- 16 WBP. Thickness to suit span. By Others.



Sotech Ltd  
 2 Traynor Way  
 Whitehouse Business Park  
 Peterlee  
 County Durham  
 SR8 2RU  
 Tel: 0191 587 2287  
 Fax: 0191 518 0703  
 www.sotech-optima.co.uk

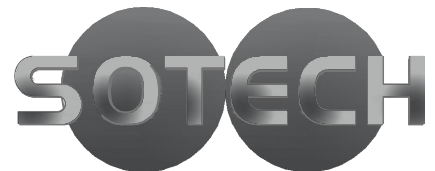
Title: Optima Shingles  
 Bottom Starter Shingle Panel

Drw No: S-06	Drawn By: DD	Date: 08.04.16
Scale: 1:2 @A4	Checked By: Sotech	Rev: A



VIEW A-A

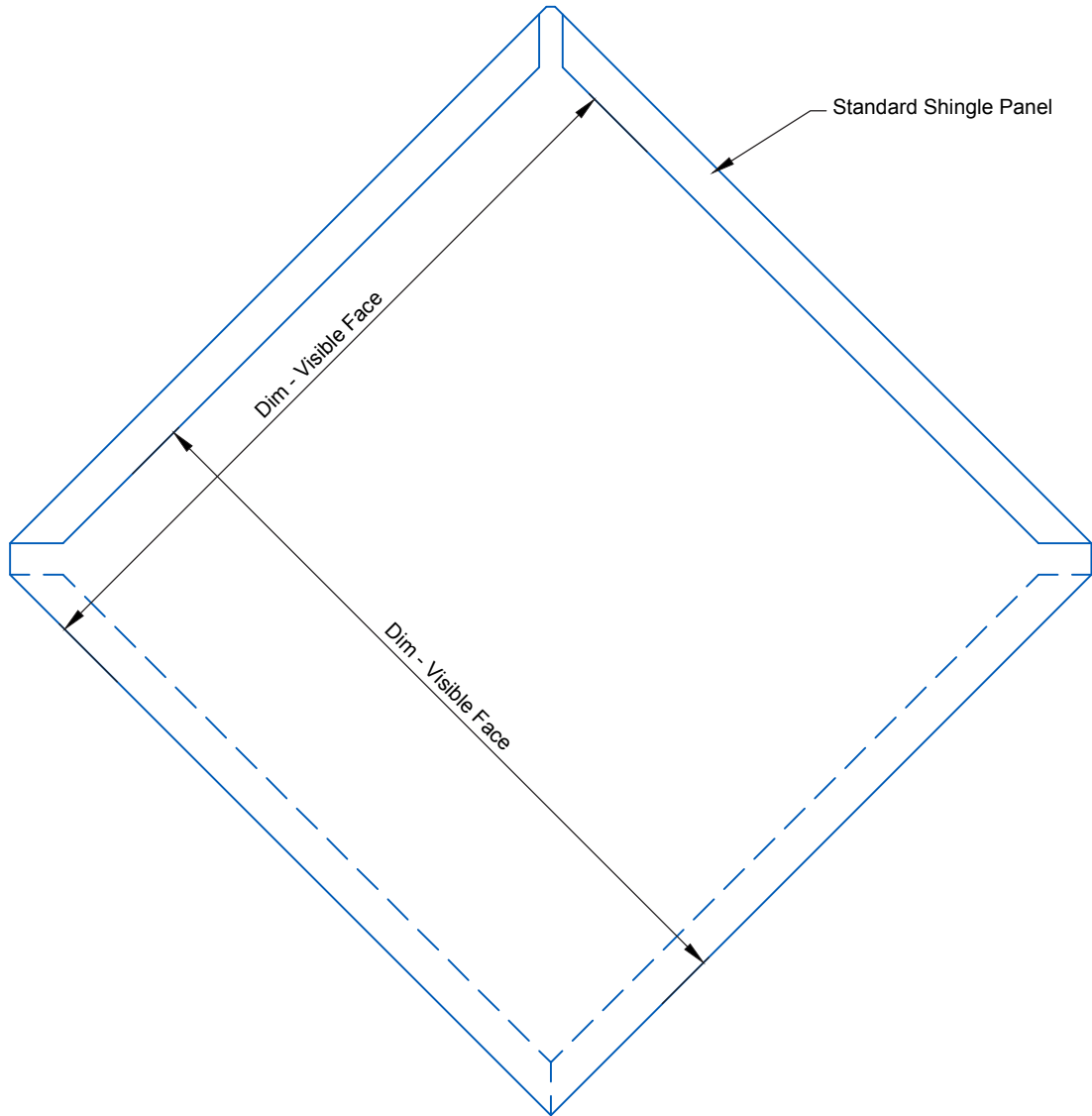
- 1 Optima Shingle Panel. Finish to suit project.
- 2 Shingle Pressed Clip With Small Screw or Rivet On Foam Pad - Project Specific.
- 3 Breathable Membrane. By Others.
- 4 Cementitious Board (or similar), thickness to suit specification. By Others.
- 5 SFS Substrate - profile size & centres to suit loadings. By Others.
- 6 V.C.L. - if required. By Others.
- 7 Internal Finish. By Others.
- 8 Insulation - If required. By Others.
- 9 Top Hat - Material & thickness to suit span. By Others
- 10 Tek fixing. By others.
- 11 Nvelope Handsfree Bkt - to suit zone & ctrs to suit loadings.
- 12 Isolator
- 13 60x40 Angle.
- 14 Edge Trim Pressing With Suitable Fixings For Structure.
- 15 Compressible Foam Seal. By Others.
- 16 WBP. Thickness to suit span. By Others.
- 17 Membrane. By Others.



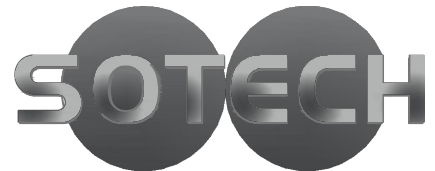
Sotech Ltd  
 2 Traynor Way  
 Whitehouse Business Park  
 Peterlee  
 County Durham  
 SR8 2RU  
 Tel: 0191 587 2287  
 Fax: 0191 518 0703  
 www.sotech-optima.co.uk

Title: Optima Shingles  
 Bottom Starter Panel With Recessed Joint

Dwg No: S-07	Drawn By: DD	Date: 08.04.16
Scale: 1:2 @A4	Checked By: Sotech	Rev: A

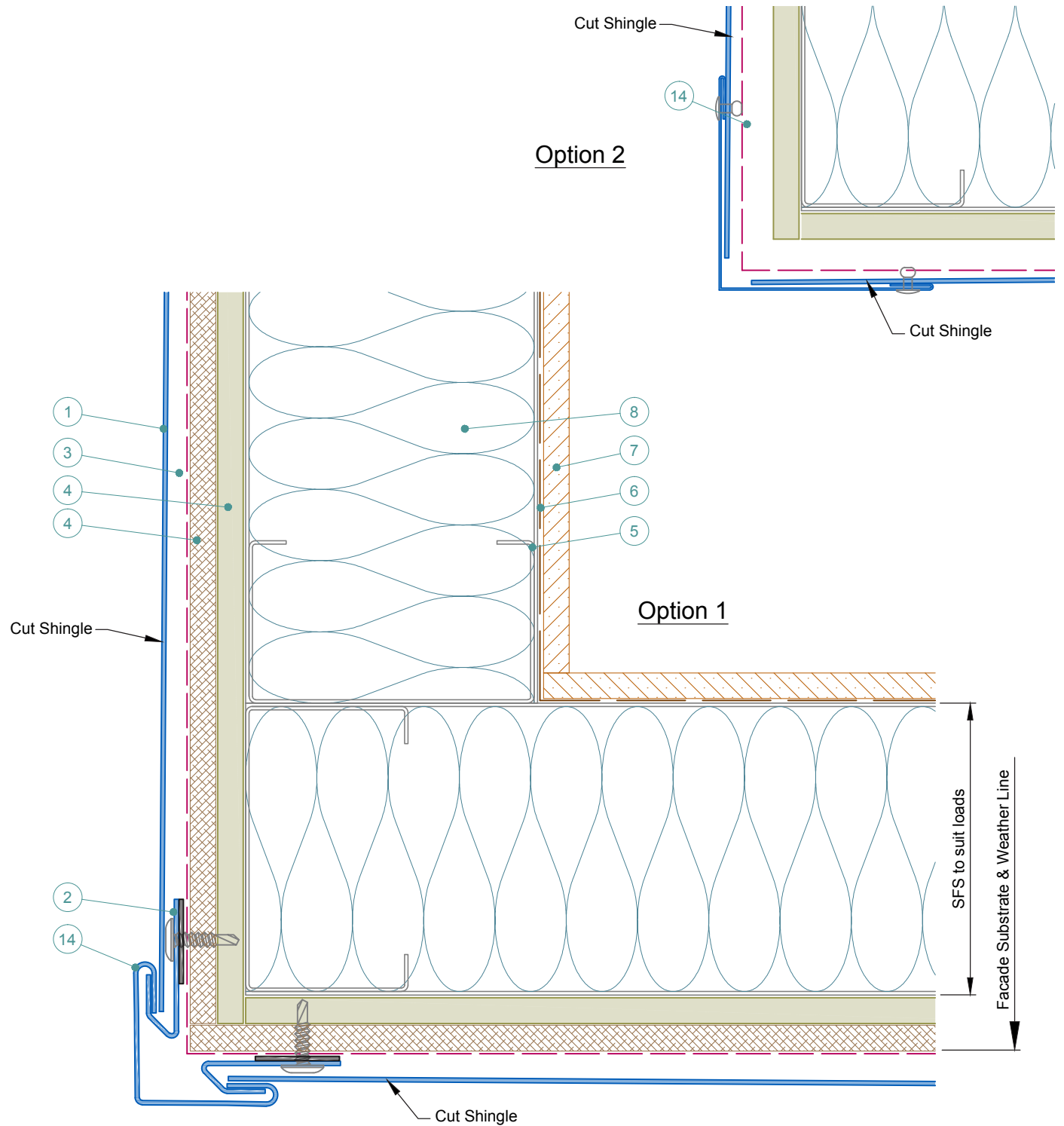


- 1 Optima Shingle Panel. Finish to suit project.
- 2 Shingle Pressed Clip With Small Screw or Rivet On Foam Pad - Project Specific.
- 3 Breathable Membrane. By Others.
- 4 Cementitious Board (or similar), thickness to suit specification. By Others.
- 5 SFS Substrate - profile size & centres to suit loadings. By Others.
- 6 V.C.L. - if required. By Others.
- 7 Internal Finish. By Others.
- 8 Insulation - If required. By Others.
- 9 Top Hat - Material & thickness to suit span. By Others
- 10 Tek fixing. By others.
- 11 Nvelope Handsfree Bkt - to suit zone & ctrs to suit loadings.
- 12 Isolator
- 13 60x40 Angle.
- 14 Edge Trim Pressing With Suitable Fixings For Structure.
- 15 Compressible Foam Seal. By Others.
- 16 Membrane. By Others.

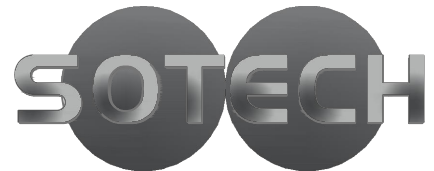


Sotech Ltd  
 2 Traynor Way  
 Whitehouse Business Park  
 Peterlee                      Tel: 0191 587 2287  
 County Durham              Fax: 0191 518 0703  
 SR8 2RU                      www.sotech-optima.co.uk

Title: Optima Shingles Standard Shingle Panel		
Dwg No: S-08	Drawn By: DD	Date: 08.04.16
Scale: NTS@A4	Checked By: Sotech	Rev: A

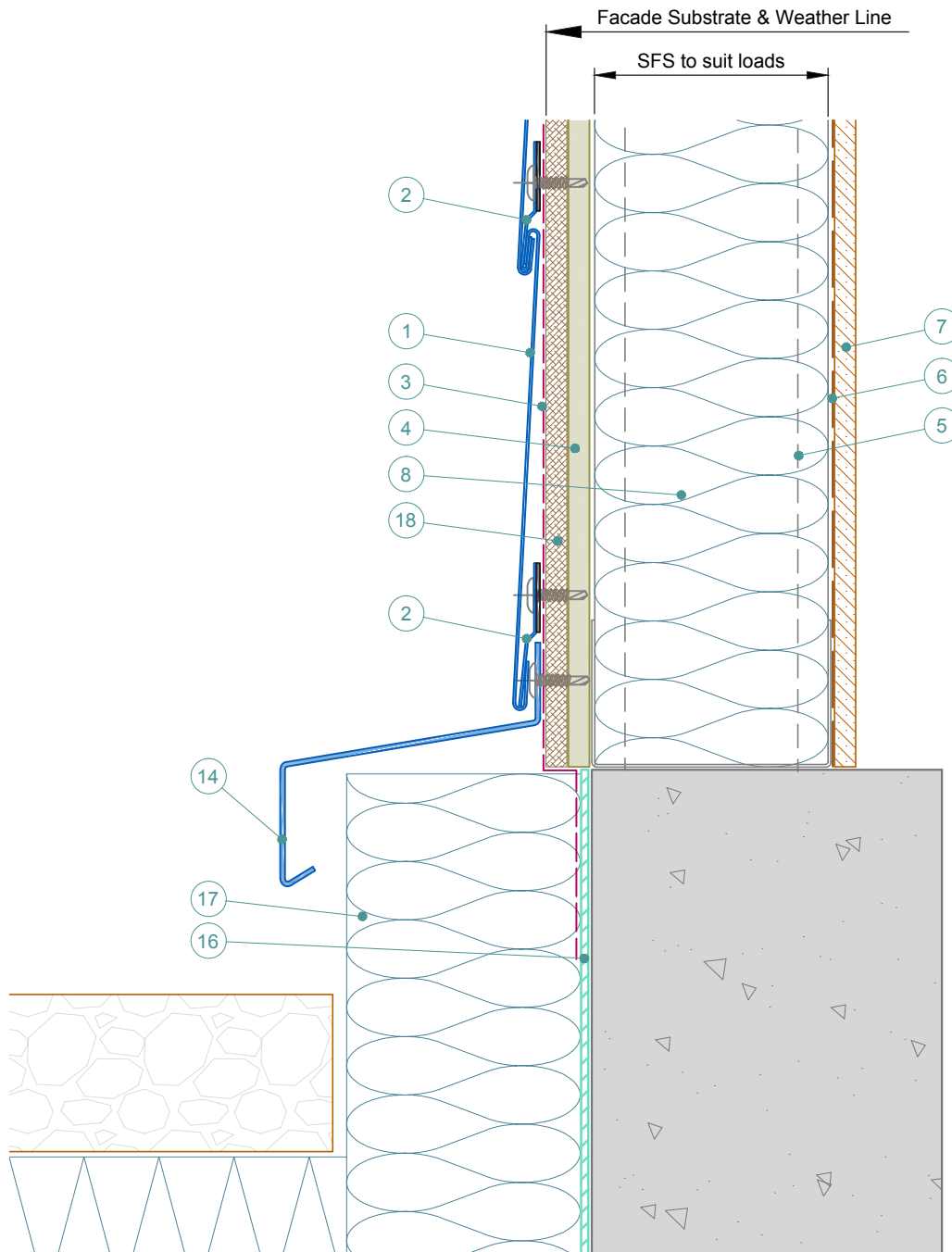


- 1 Optima Shingle Panel. Finish to suit project.
- 2 Shingle Pressed Clip With Small Screw or Rivet On Foam Pad - Project Specific.
- 3 Breathable Membrane. By Others.
- 4 Cementitious Board (or similar), thickness to suit specification. By Others.
- 5 SFS Substrate - profile size & centres to suit loadings. By Others.
- 6 V.C.L. - if required. By Others.
- 7 Internal Finish. By Others.
- 8 Insulation - If required. By Others.
- 9 Top Hat - Material & thickness to suit span. By Others
- 10 Tek fixing. By others.
- 11 Nvelope Handsfree Bkt - to suit zone & ctrs to suit loadings.
- 12 Isolator
- 13 60x40 Angle.
- 14 Edge Trim Pressing With Suitable Fixings For Structure.
- 15 Compressible Foam Seal. By Others.
- 16 WBP. Thickness to suit span. By Others.
- 17 Membrane. By Others.

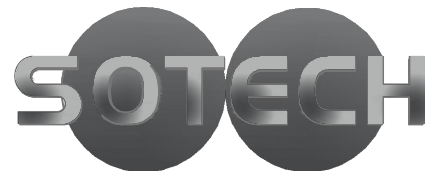


Sotech Ltd  
 2 Traynor Way  
 Whitehouse Business Park  
 Peterlee                      Tel: 0191 587 2287  
 County Durham              Fax: 0191 518 0703  
 SR8 2RU                      www.sotech-optima.co.uk

Title: Optima Shingles Corner Detail Options 1 & 2		
Dwg No: S-09	Drawn By: DD	Date: 08.04.16
Scale: 1:2 @A4	Checked By: Sotech	Rev: A



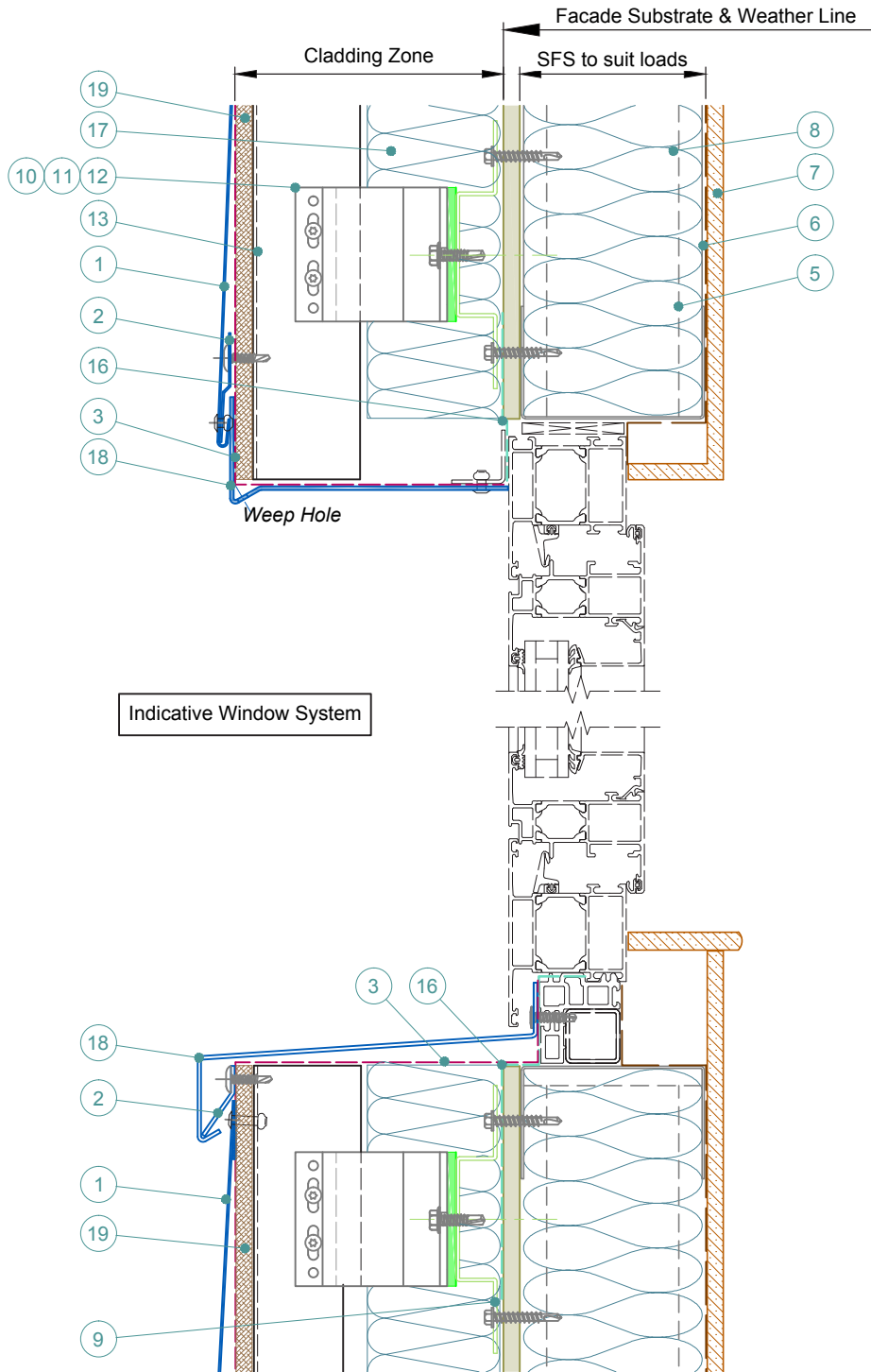
- 1 Optima Shingle Panel. Finish to suit project.
- 2 Shingle Pressed Clip With Small Screw or Rivet On Foam Pad - Project Specific.
- 3 Breathable Membrane. By Others.
- 4 Cementitious Board (or simiar), thickness to suit specification. By Others.
- 5 SFS Substrate - profile size & centres to suit loadings. By Others.
- 6 V.C.L. - if required. By Others.
- 7 Internal Finish. By Others.
- 8 Insulation - If required. By Others.
- 9 Top Hat - Material & thickness to suit span. By Others
- 10 Tek fixing. By others.
- 11 Nvelope Handsfree Bkt - to suit zone & ctrs to suit loadings.
- 12 Isolator
- 13 60x40 Angle.
- 14 Edge Trim Pressing With Suitable Fixings For Structure.
- 15 Compressible Foam Seal. By Others.
- 16 Membrane. By Others.
- 17 Insulation. By Others.
- 18 WBP. Thickness to suit span. By Others.



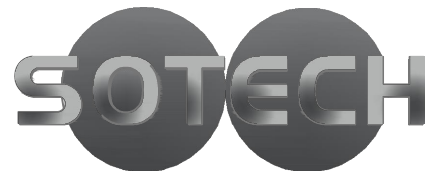
Sotech Ltd  
 2 Traynor Way  
 Whitehouse Business Park  
 Peterlee  
 County Durham  
 SR8 2RU  
 Tel: 0191 587 2287  
 Fax: 0191 518 0703  
 www.sotech-optima.co.uk

Title: Optima Shingles  
 Base Detail

Drw No: S-10	Drawn By: DD	Date: 08.04.16
Scale: 1:3 @A4	Checked By: Sotech	Rev: A



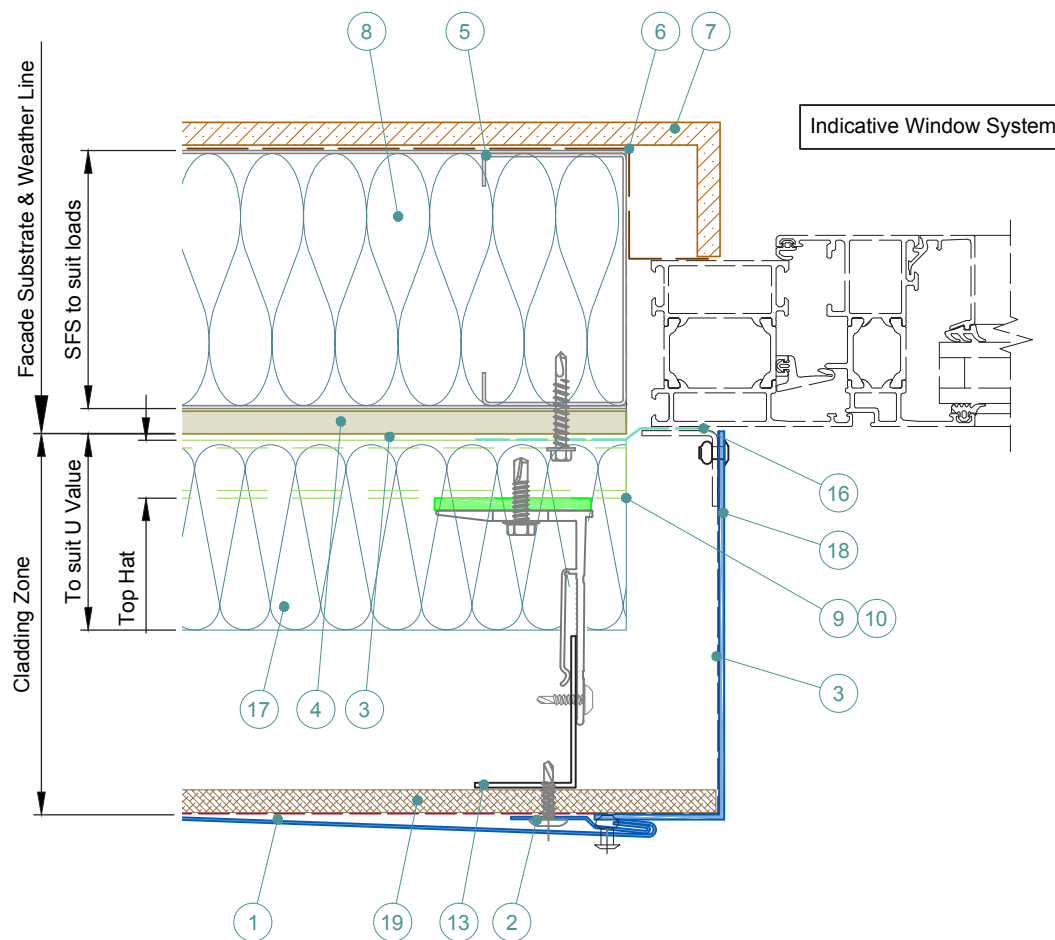
- 1 Optima Shingle Panel. Finish to suit project.
- 2 Shingle Pressed Clip With Small Screw or Rivet On Foam Pad - Project Specific.
- 3 Breathable Membrane. By Others.
- 4 Cemeticious Board (or simiar), thickness to suit specification. By Others.
- 5 SFS Substrate - profile size & centres to suit loadings. By Others.
- 6 V.C.L. - if required. By Others.
- 7 Internal Finish. By Others.
- 8 Insulation - If required. By Others.
- 9 Top Hat - Material & thickness to suit span. By Others
- 10 Tek fixing. By others.
- 11 Nvelope Handsfree Bkt - to suit zone & ctrs to suit loadings.
- 12 Isolator
- 13 60x40 Angle.
- 14 Edge Trim Pressing With Suitable Fixings For Structure.
- 15 Compressible Foam Seal. By Others.
- 16 Membrane. By Others.
- 17 Insulation - thickness to suit U req'd value. By Others.
- 18 Window Pod.
- 19 Marine Plywood - thickness to suit span. By Others.



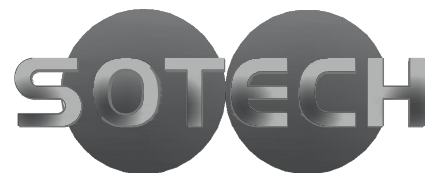
Sotech Ltd  
 2 Traynor Way  
 Whitehouse Business Park  
 Peterlee  
 County Durham  
 SR8 2RU  
 Tel: 0191 587 2287  
 Fax: 0191 518 0703  
 www.sotech-optima.co.uk

Title: Optima Shingles  
 Vertical Window Interface

Drg No:	S-11	Drawn By:	DD	Date:	08.04.16
Scale:	1:2 @A4	Checked By:	Sotech	Rev:	A



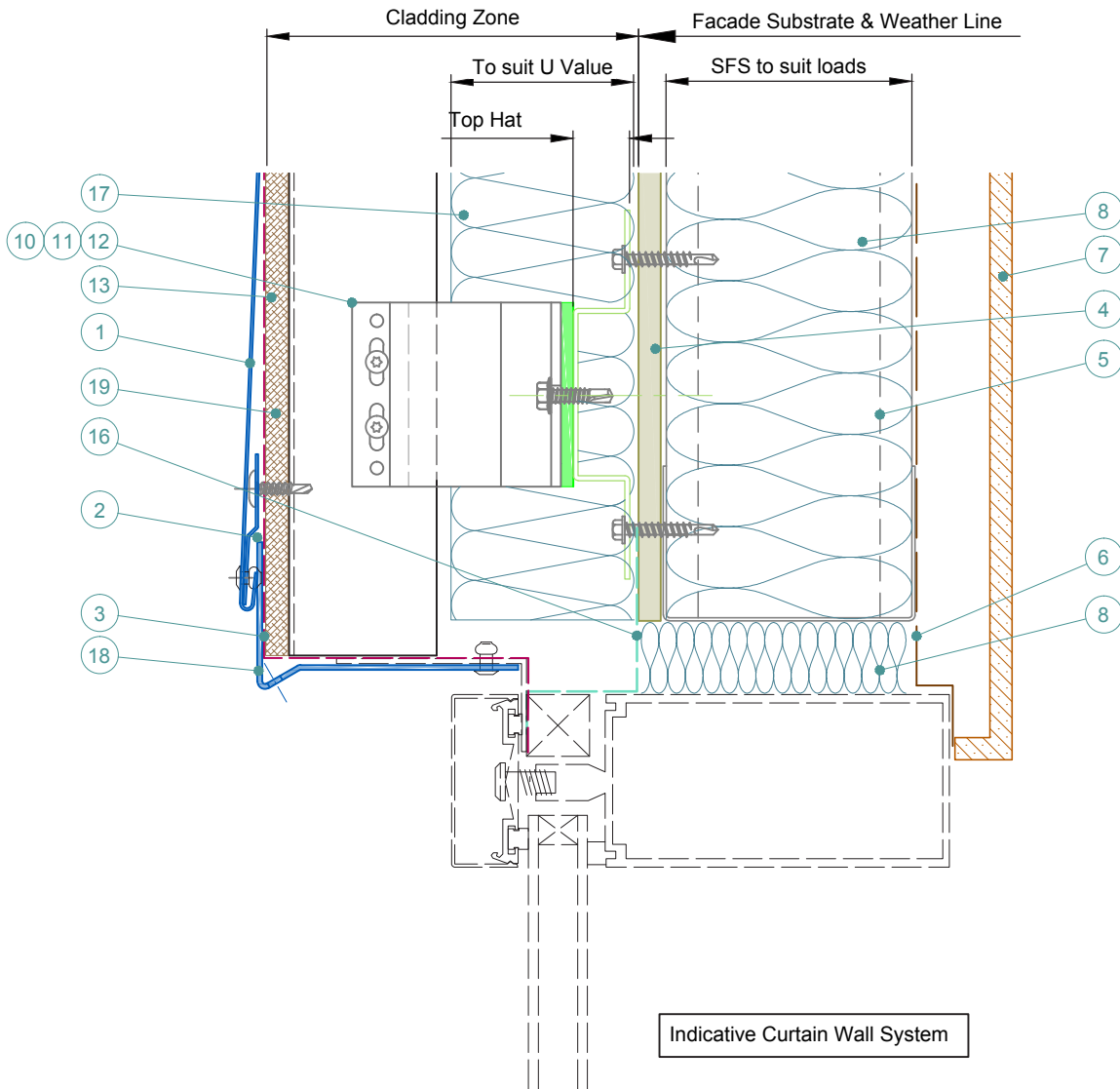
- 1 Optima Shingle Panel. Finish to suit project.
- 2 Shingle Pressed Clip With Small Screw or Rivet - Project Specific.
- 3 Breathable Membrane. By Others.
- 4 Cementitious Board (or similar), thickness to suit specification. By Others.
- 5 SFS Substrate - profile size & centres to suit loadings. By Others.
- 6 V.C.L. - if required. By Others.
- 7 Internal Finish. By Others.
- 8 Insulation - If required. By Others.
- 9 Top Hat - Material & thickness to suit span. By Others
- 10 Tek fixing. By others.
- 11 Nvelope Handsfree Bkt - to suit zone & ctrs to suit loadings.
- 12 Isolator
- 13 60x40 Angle.
- 14 Edge Trim Pressing With Suitable Fixings For Structure.
- 15 Compressible Foam Seal. By Others.
- 16 Membrane. By Others.
- 17 Insulation - thickness to suit U req'd value. By Others.
- 18 Window Pod.
- 19 Marine Plywood - thickness to suit span. By Others.



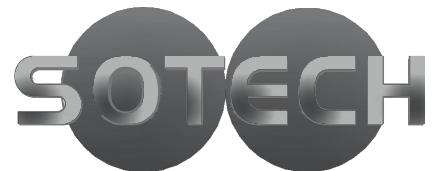
Sotech Ltd  
 2 Traynor Way  
 Whitehouse Business Park  
 Peterlee  
 County Durham  
 SR8 2RU  
 Tel: 0191 587 2287  
 Fax: 0191 518 0703  
 www.sotech-optima.co.uk

Title: Optima Shingles  
 Horizontal Window Interface

Drw No: S-12	Drawn By: DD	Date: 08.04.16
Scale: 1:2 @A4	Checked By: Sotech	Rev: A



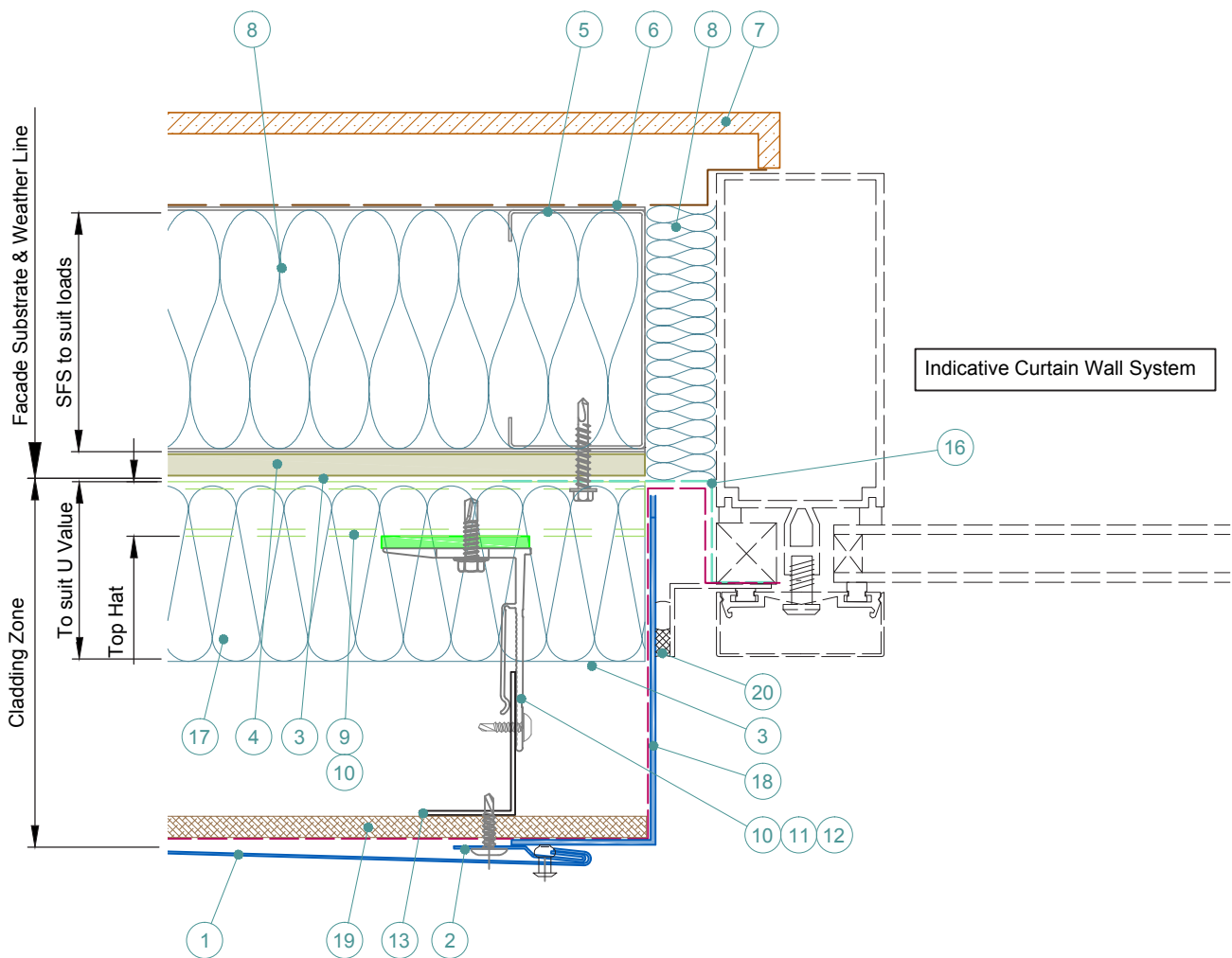
- 1 Optima Shingle Panel. Finish to suit project.
- 2 Shingle Pressed Clip With Small Screw or Rivet - Project Specific.
- 3 Breathable Membrane. By Others.
- 4 Cemeticious Board (or simiar), thickness to suit specification. By Others.
- 5 SFS Substrate - profile size & centres to suit loadings. By Others.
- 6 V.C.L. - if required. By Others.
- 7 Internal Finish. By Others.
- 8 Insulation - If required. By Others.
- 9 Top Hat - Material & thickness to suit span. By Others
- 10 Tek fixing. By others.
- 11 Nvelope Handsfree Bkt - to suit zone & ctrs to suit loadings.
- 12 Isolator
- 13 60x40 Angle.
- 14 Edge Trim Pressing With Suitable Fixings For Structure.
- 15 Compressible Foam Seal. By Others.
- 16 Membrane. By Others.
- 17 Insulation - thickness to suit U req'd value. By Others.
- 18 Perimeter Flashing.
- 19 WBP. Thickness to suit span. By Others.



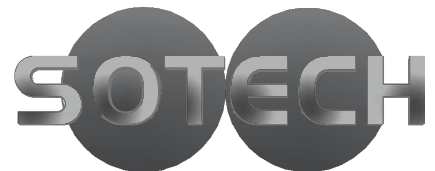
Sotech Ltd  
 2 Traynor Way  
 Whitehouse Business Park  
 Peterlee  
 County Durham  
 SR8 2RU  
 Tel: 0191 587 2287  
 Fax: 0191 518 0703  
 www.sotech-optima.co.uk

Title: Optima Shingles  
 Curtain Wall Head Detail Interface

Drw No: S-13	Drawn By: DD	Date: 08.04.16
Scale: 1:2 @A4	Checked By: Sotech	Rev: A



- 1 Optima Shingle Panel. Finish to suit project.
- 2 Shingle Pressed Clip With Small Screw or Rivet - Project Specific.
- 3 Breathable Membrane. By Others.
- 4 Cementitious Board (or similar), thickness to suit specification. By Others.
- 5 SFS Substrate - profile size & centres to suit loadings. By Others.
- 6 V.C.L. - if required. By Others.
- 7 Internal Finish. By Others.
- 8 Insulation - If required. By Others.
- 9 Top Hat - Material & thickness to suit span. By Others
- 10 Tek fixing. By others.
- 11 Nvelope Handsfree Bkt - to suit zone & ctrs to suit loadings.
- 12 Isolator
- 13 60x40 Angle.
- 14 Edge Trim Pressing With Suitable Fixings For Structure.
- 15 Compressible Foam Seal. By Others.
- 16 Membrane. By Others.
- 17 Insulation - thickness to suit U req'd value. By Others.
- 18 Perimeter Flashing.
- 19 Marine Plywood - thickness to suit span. By Others.
- 20 Silicone Seal. By Others.

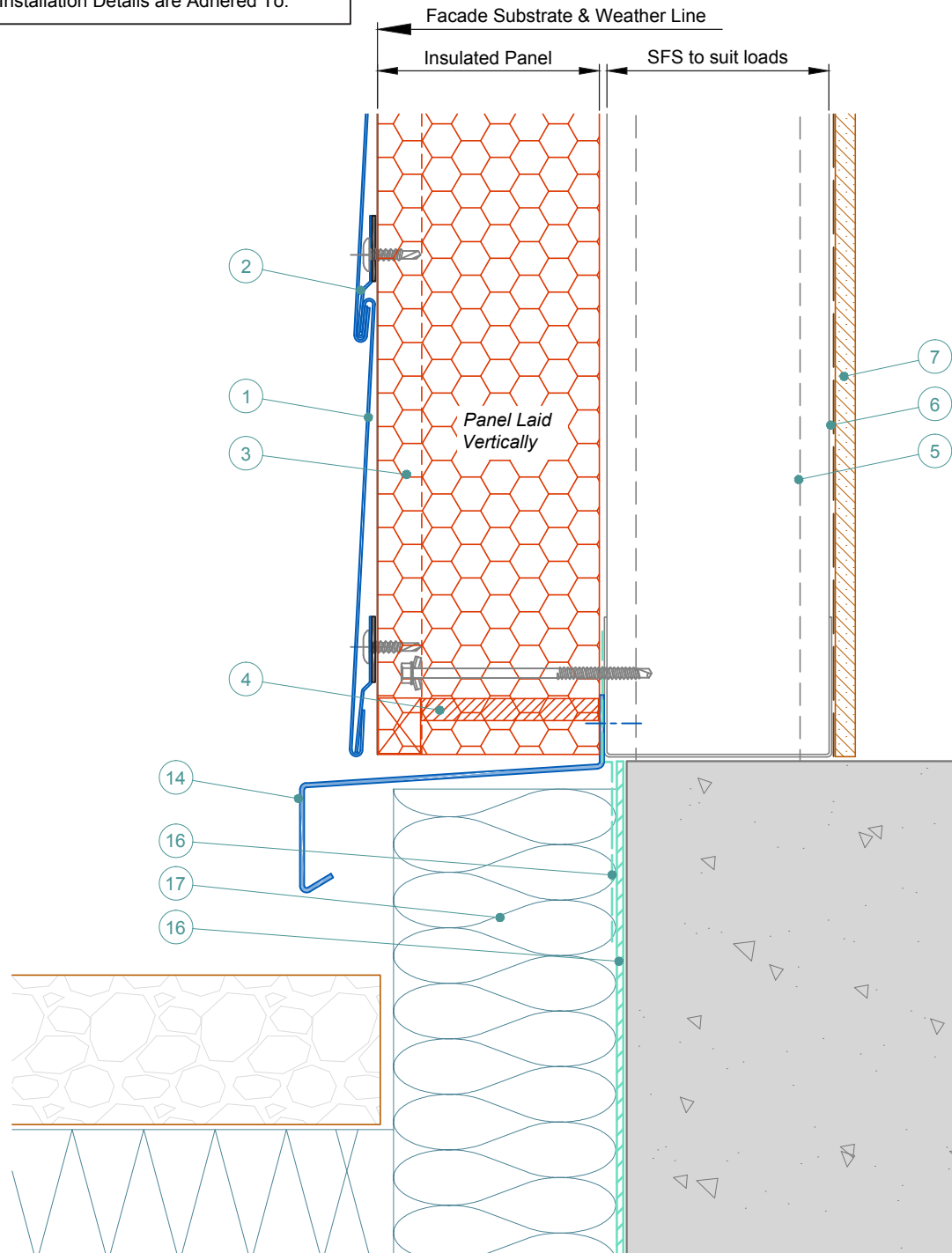


Sotech Ltd  
 2 Traynor Way  
 Whitehouse Business Park  
 Peterlee  
 County Durham  
 SR8 2RU  
 Tel: 0191 587 2287  
 Fax: 0191 518 0703  
 www.sotech-optima.co.uk

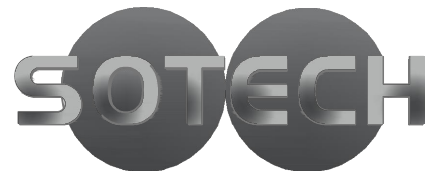
Title: Optima Shingles  
 Curtain Wall Jamb Detail Interface

Dwg No:	Drawn By:	Date:
S-14	DD	08.04.16
Scale:	Checked By:	Rev:
1:2 @A4	Sotech	A

Insulated Panel Shown Indicatively. Ensure System Suppliers Installation Details are Adhered To.



- 1 Optima Shingle Panel. Finish to suit project.
- 2 Shingle Pressed Clip With Small Screw or Rivet On Foam Pad - Project Specific.
- 3 Insulated Panel - thickness to suit U Value. By Others.
- 4 Air Seal - gun grade silicone. By Others.
- 5 SFS Substrate - profile size & centres to suit loadings. By Others.
- 6 V.C.L. - if required. By Others.
- 7 Internal Finish. By Others.
- 8 Insulation - If required. By Others.
- 9 Top Hat - Material & thickness to suit span. By Others
- 10 Tek fixing. By others.
- 11 Nvelope Handsfree Bkt - to suit zone & ctrs to suit loadings.
- 12 Isolator
- 13 60x40 Angle.
- 14 Edge Trim Pressing With Suitable Fixings For Structure.
- 15 Compressible Foam Seal. By Others.
- 16 Membrane. By Others.
- 17 Insulation - thickness to suit U req'd value. By Others.
- 18 Window Pod.
- 19 Silicone Seal. By Others.

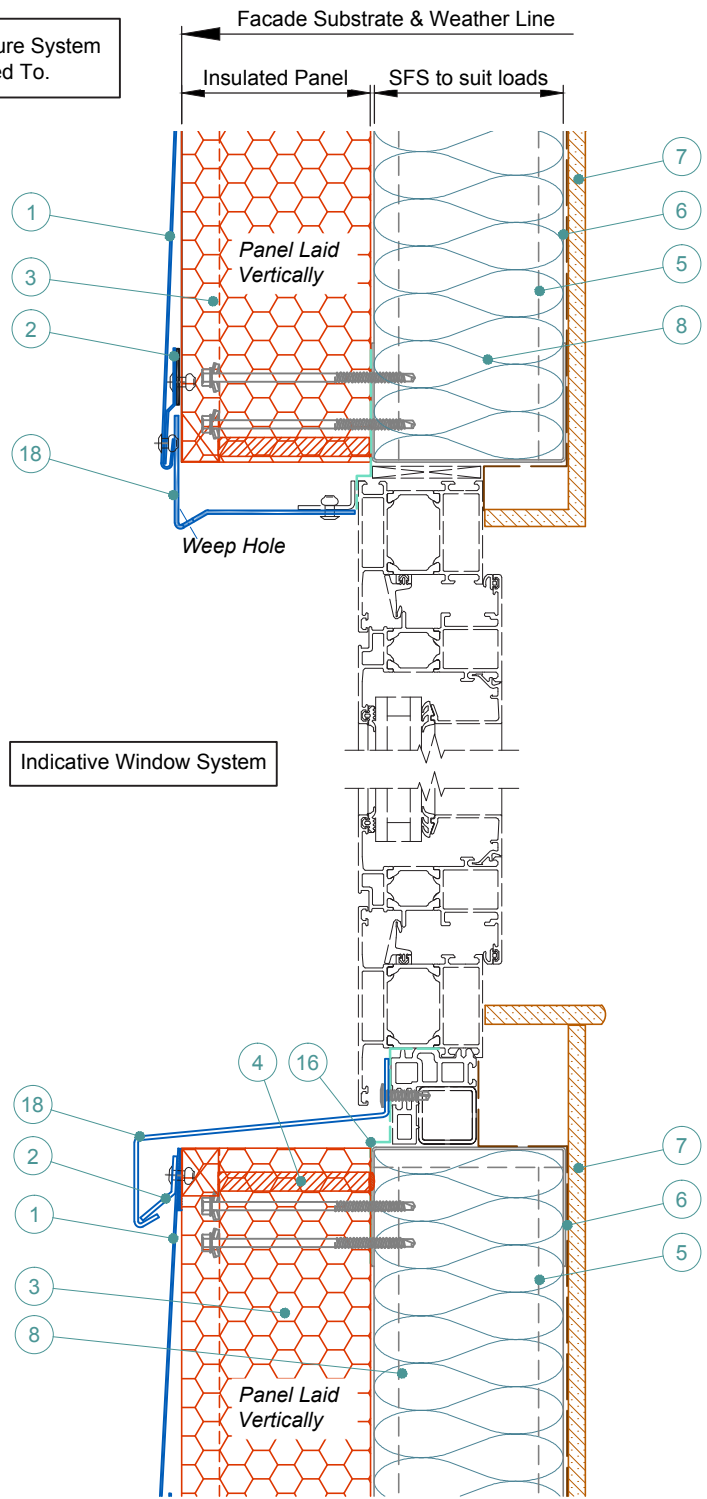


Sotech Ltd  
 2 Traynor Way  
 Whitehouse Business Park  
 Peterlee  
 County Durham  
 SR8 2RU  
 Tel: 0191 587 2287  
 Fax: 0191 518 0703  
 www.sotech-optima.co.uk

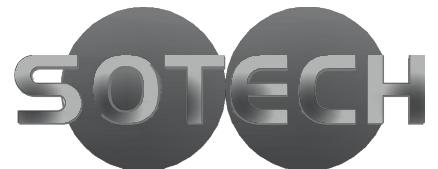
Title: Optima Shingles  
 Base Detail With Insulated Panel

Drw No: S-15	Drawn By: DD	Date: 08.04.16
Scale: 1:3 @A4	Checked By: Sotech	Rev: A

Insulated Panel Shown Indicatively. Ensure System Suppliers Installation Details are Adhered To.



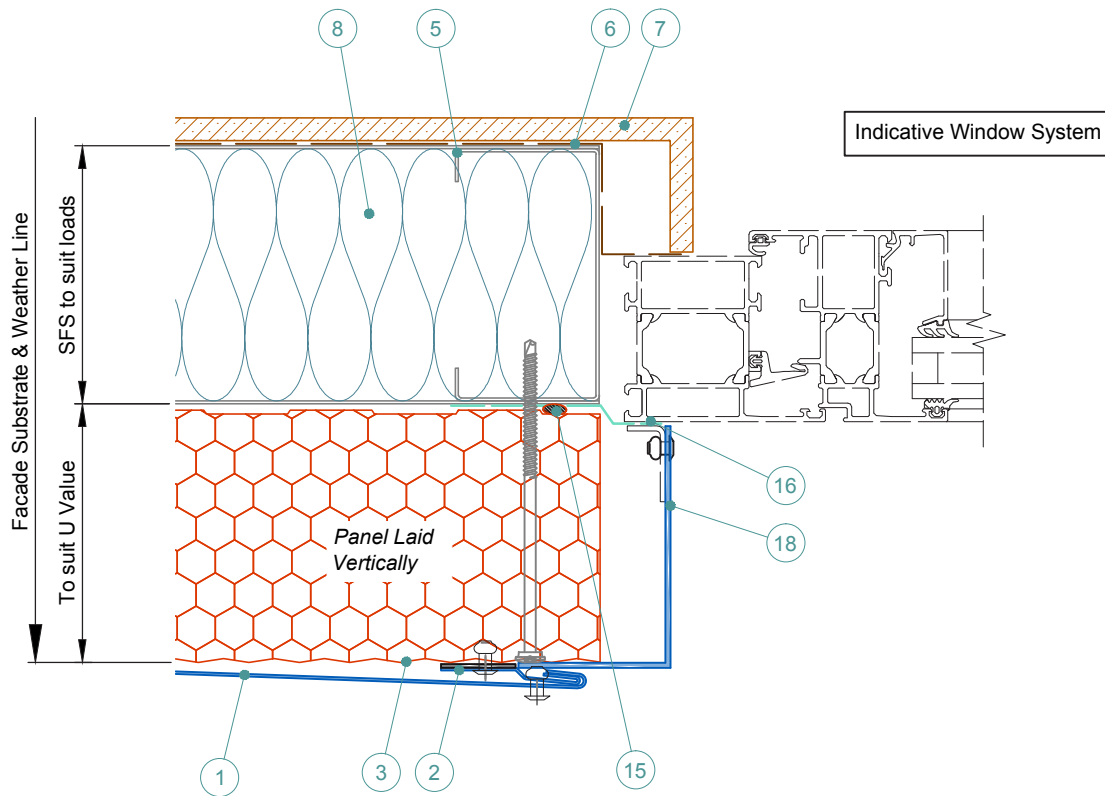
- 1 Optima Shingle Panel. Finish to suit project.
- 2 Shingle Pressed Clip With Small Screw or Rivet On Foam Pad - Project Specific.
- 3 Insulated Panel - thickness to suit U Value. By Others.
- 4 Air Seal - gun grade silicone. By Others.
- 5 SFS Substrate - profile size & centres to suit loadings. By Others.
- 6 V.C.L. - if required. By Others.
- 7 Internal Finish. By Others.
- 8 Insulation - If required. By Others.
- 9 Top Hat - Material & thickness to suit span. By Others
- 10 Tek fixing. By others.
- 11 Nvelope Handsfree Bkt - to suit zone & ctrs to suit loadings.
- 12 Isolator
- 13 60x40 Angle.
- 14 Edge Trim Pressing With Suitable Fixings For Structure.
- 15 Compressible Foam Seal. By Others.
- 16 Membrane. By Others.
- 17 Insulation - thickness to suit U req'd value. By Others.
- 18 Window Pod.
- 19 Silicone Seal. By Others.



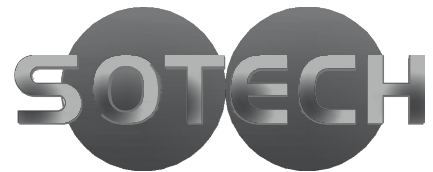
Sotech Ltd  
 2 Traynor Way  
 Whitehouse Business Park  
 Peterlee  
 County Durham  
 SR8 2RU  
 Tel: 0191 587 2287  
 Fax: 0191 518 0703  
 www.sotech-optima.co.uk

Title: Optima Shingles Vertical Window Details With Insulated Panels		
Drg No: S-16	Drawn By: DD	Date: 08.04.16
Scale: 1:4 @A4	Checked By: Sotech	Rev: A

Insulated Panel Shown Indicatively.Ensure System Suppliers Installation Details are Adhered To.



- 1 Optima Shingle Panel. Finish to suit project.
- 2 Shingle Pressed Clip With Small Screw or Rivet On Foam Pad - Project Specific.
- 3 Insulated Panel - thickness to suit U Value. By Others.
- 4 Air Seal - gun grade silicone. By Others.
- 5 SFS Substrate - profile size & centres to suit loadings. By Others.
- 6 V.C.L. - if required. By Others.
- 7 Internal Finish. By Others.
- 8 Insulation - If required. By Others.
- 9 Top Hat - Material & thickness to suit span. By Others
- 10 Tek fixing. By others.
- 11 Nvelope Handsfree Bkt - to suit zone & ctrs to suit loadings.
- 12 Isolator
- 13 60x40 Angle.
- 14 Edge Trim Pressing With Suitable Fixings For Structure.
- 15 Compressible Foam Seal. By Others.
- 16 Membrane. By Others.
- 17 Insulation - thickness to suit U req'd value. By Others.
- 18 Window Pod.
- 19 Silicone Seal. By Others.



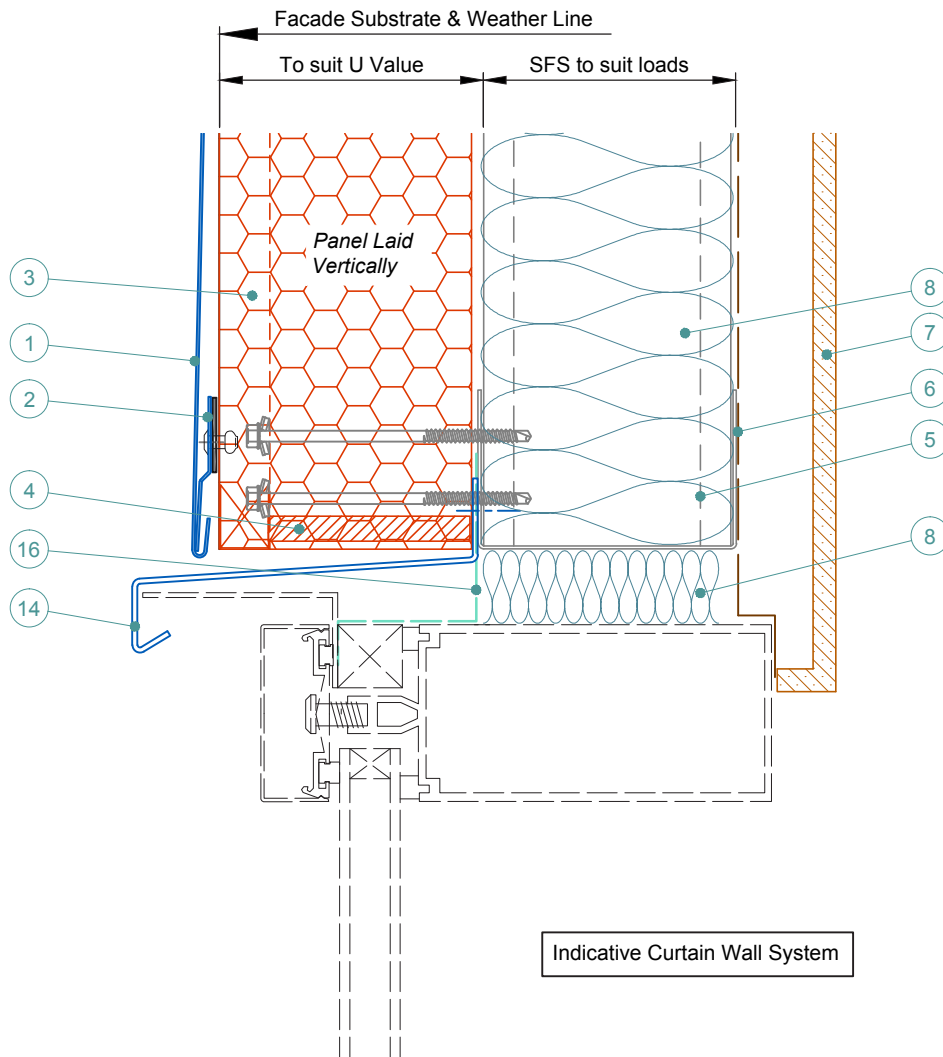
Sotech Ltd  
 2 Traynor Way  
 Whitehouse Business Park  
 Peterlee Tel: 0191 587 2287  
 County Durham Fax: 0191 518 0703  
 SR8 2RU www.sotech-optima.co.uk

Title: Optima Shingles  
 Horizontal Window Detail With Insulated Panel

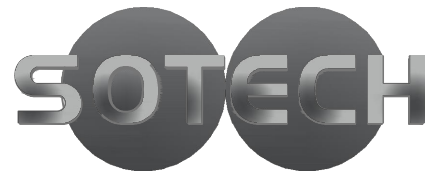
Drg No: S-17 Drawn By: DD Date: 08.04.16

Scale: 1:3 @A4 Checked By: Sotech Rev: A

Insulated Panel Shown Indicatively.Ensure System Suppliers Installation Details are Adhered To.



- 1 Optima Shingle Panel. Finish to suit project.
- 2 Shingle Pressed Clip With Small Screw or Rivet On Foam Pad - Project Specific.
- 3 Insulated Panel - thickness to suit U Value. By Others.
- 4 Air Seal - gun grade silicone. By Others.
- 5 SFS Substrate - profile size & centres to suit loadings. By Others.
- 6 V.C.L. - if required. By Others.
- 7 Internal Finish. By Others.
- 8 Insulation - If required. By Others.
- 9 Top Hat - Material & thickness to suit span. By Others
- 10 Tek fixing. By others.
- 11 Nvelope Handsfree Bkt - to suit zone & ctrs to suit loadings.
- 12 Isolator
- 13 60x40 Angle.
- 14 Edge Trim Pressing With Suitable Fixings For Structure.
- 15 Compressible Foam Seal. By Others.
- 16 Membrane. By Others.
- 17 Insulation - thickness to suit U req'd value. By Others.
- 18 Window Pod.
- 19 Silicone Seal. By Others.



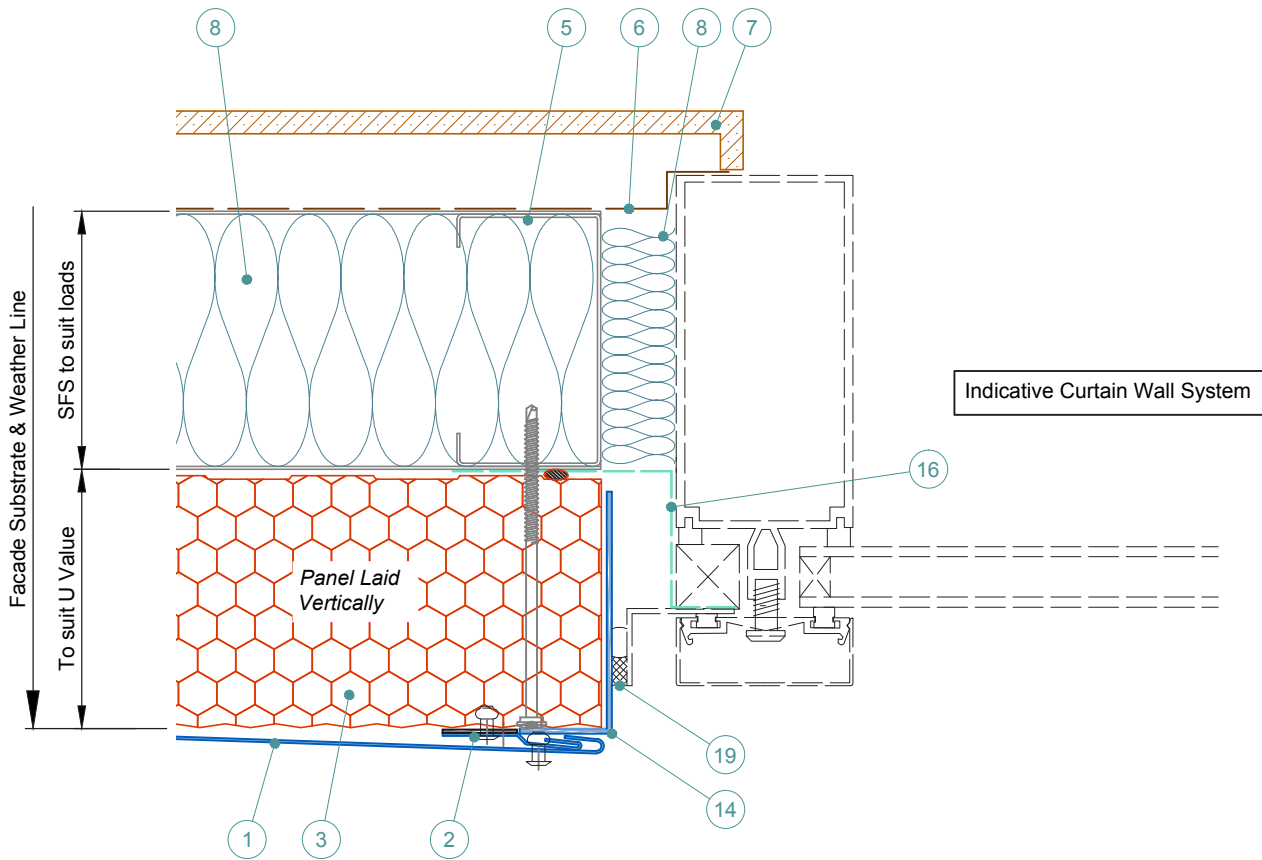
Sotech Ltd  
 2 Traynor Way  
 Whitehouse Business Park  
 Peterlee      Tel: 0191 587 2287  
 County Durham      Fax: 0191 518 0703  
 SR8 2RU      www.sotech-optima.co.uk

Title: Optima Shingles  
 Curtain Wall Head Detail With Insulated Panel

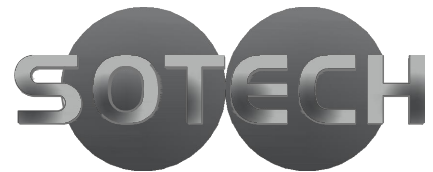
Drg No: S-18      Drawn By: DD      Date: 08.04.16

Scale: 1:3 @A4      Checked By: Sotech      Rev: A

Insulated Panel Shown Indicatively. Ensure System Suppliers Installation Details are Adhered To.



- 1 Optima Shingle Panel. Finish to suit project.
- 2 Shingle Pressed Clip With Small Screw or Rivet On Foam Pad - Project Specific.
- 3 Insulated Panel - thickness to suit U Value. By Others.
- 4 Air Seal - gun grade silicone. By Others.
- 5 SFS Substrate - profile size & centres to suit loadings. By Others.
- 6 V.C.L. - if required. By Others.
- 7 Internal Finish. By Others.
- 8 Insulation - If required. By Others.
- 9 Top Hat - Material & thickness to suit span. By Others
- 10 Tek fixing. By others.
- 11 Nvelope Handsfree Bkt - to suit zone & ctrs to suit loadings.
- 12 Isolator
- 13 60x40 Angle.
- 14 Perimeter Flashing.
- 15 Compressible Foam Seal. By Others.
- 16 Membrane. By Others.
- 17 Insulation - thickness to suit U req'd value. By Others.
- 18 Window Pod.
- 19 Silicone Seal. By Others.



Sotech Ltd  
 2 Traynor Way  
 Whitehouse Business Park  
 Peterlee                      Tel: 0191 587 2287  
 County Durham              Fax: 0191 518 0703  
 SR8 2RU                      www.sotech-optima.co.uk

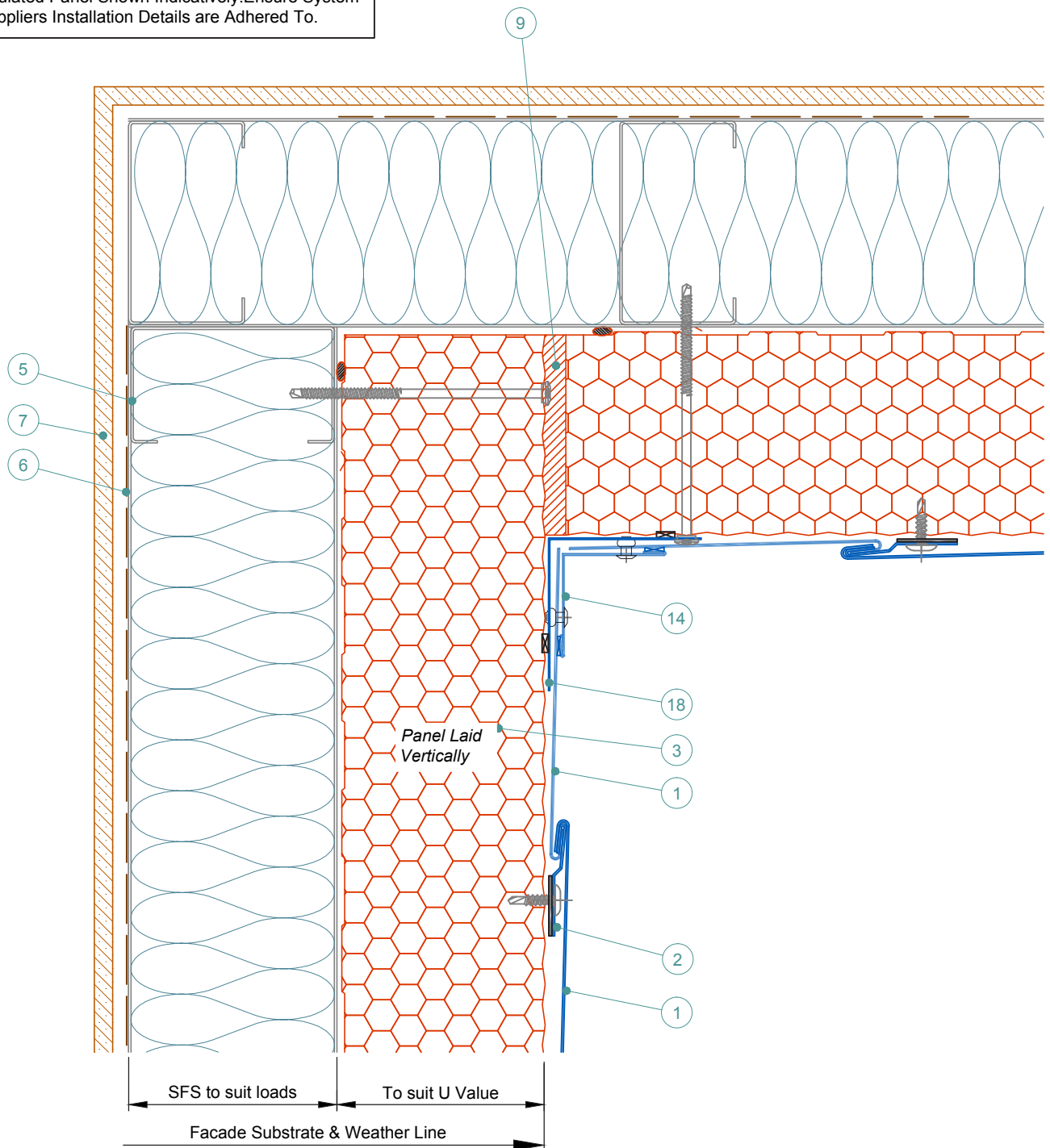
Title: Optima Shingles  
 Curtain Wall Jamb Detail With Insulated Panel

Drg No: S-19                      Drawn By: DD                      Date: 08.04.16

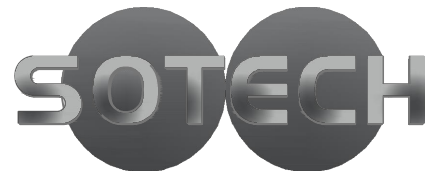
Scale: 1:3 @A4                      Checked By: Sotech                      Rev: A



Insulated Panel Shown Indicatively. Ensure System Suppliers Installation Details are Adhered To.



- 1 Optima Shingle Panel. Finish to suit project.
- 2 Shingle Pressed Clip With Small Screw or Rivet On Foam Pad - Project Specific.
- 3 Insulated Panel - thickness to suit U Value. By Others.
- 4 Air Seal - gun grade silicone. By Others.
- 5 SFS Substrate - profile size & centres to suit loadings. By Others.
- 6 V.C.L. - if required. By Others.
- 7 Internal Finish. By Others.
- 8 Insulation - If required. By Others.
- 9 Canister Applied Fire Rated Insulation. By Others.
- 10 Tek fixing. By others.
- 11 Nvelope Handsfree Bkt - to suit zone & ctrs to suit loadings.
- 12 Isolator
- 13 60x40 Angle.
- 14 Edge Trim Pressing With Suitable Fixings For Structure.
- 15 Compressible Foam Seal. By Others.
- 16 Membrane. By Others.
- 17 Insulation - thickness to suit U req'd value. By Others.
- 18 0.7mm Corner Flashing On Compressible Foam Seal.
- 19 Silicone Seal. By Others.



Sotech Ltd  
 2 Traynor Way  
 Whitehouse Business Park  
 Peterlee  
 County Durham  
 SR8 2RU  
 Tel: 0191 587 2287  
 Fax: 0191 518 0703  
 www.sotech-optima.co.uk

Title: Optima Shingles  
 Internal Corner On Insulated Panels

Drw No: S-21	Drawn By: DD	Date: 08.04.16
Scale: 1:3 @A4	Checked By: Sotech	Rev: A