



SOTECH OPTIMA IPC

Secret fix pressed plank system, complete with rail and bracket support.

System Fully Independently CWCT Tested and Certified.

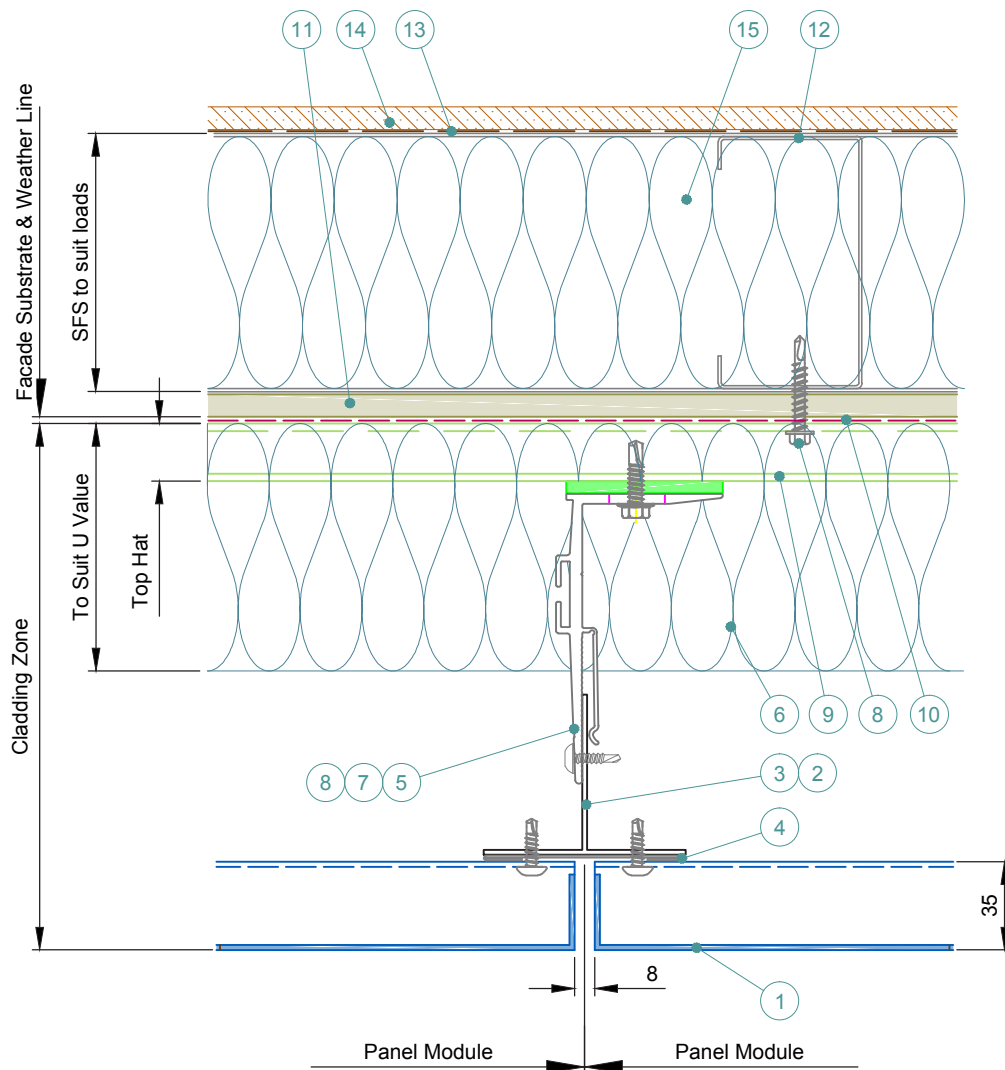




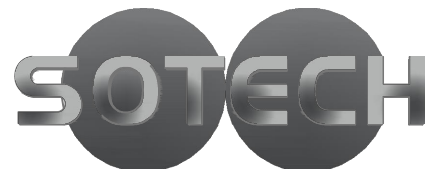
Contents

Sotech Optima IPC | Solid Aluminium System Details

3.	Vertical Joint.....	<i>(IPC-01)</i>
4.	Horizontal Joint.....	<i>(IPC-02)</i>
5.	External Corner.....	<i>(IPC-03)</i>
6.	Internal Corner.....	<i>(IPC-04)</i>
7.	Horizontal Panel Window Interface.....	<i>(IPC-05)</i>
8.	Horizontal Panel Window Jamb Detail.....	<i>(IPC-06)</i>
9.	Vertical Panel Joint.....	<i>(IPC-07)</i>
10.	Vertical Panel, Horizontal Joint.....	<i>(IPC-08)</i>
11.	Horizontal Panel, Alternative Head Detail.....	<i>(IPC-09)</i>
12.	Vertical Laid Panels - Window Jamb.....	<i>(IPC-10)</i>
13.	Horizontal Panel, Vertical Movement Joint.....	<i>(IPC-11)</i>



- 1 Optima IPC Panel. Finish to suit project.
- 2 Self Drill Fastener(Ejot JT4-ZT-4-4.8x19).
- 3 T Profile - 60/80
- 4 Optional Colour Match Strip
- 5 Nvelope Handsfree Bkt - to suit zone & ctrs to suit loadings.
- 6 Insulation - thickness & type to suit specification. By Others.
- 7 Isolator.
- 8 Tek Fixing - type to suit substrate material. By Others.
- 9 Top Hat - material to suit span. By Others.
- 10 Breathable Membrane. By Others.
- 11 Cemeticious Board (or simiar), thickness to suit specification. By Others.
- 12 SFS Substrate - profile size & centres to suit loadings. By Others.
- 13 V.C.L. - if required. By Others.
- 14 Internal Finish. By Others.
- 15 Insulation - If required. By Others.

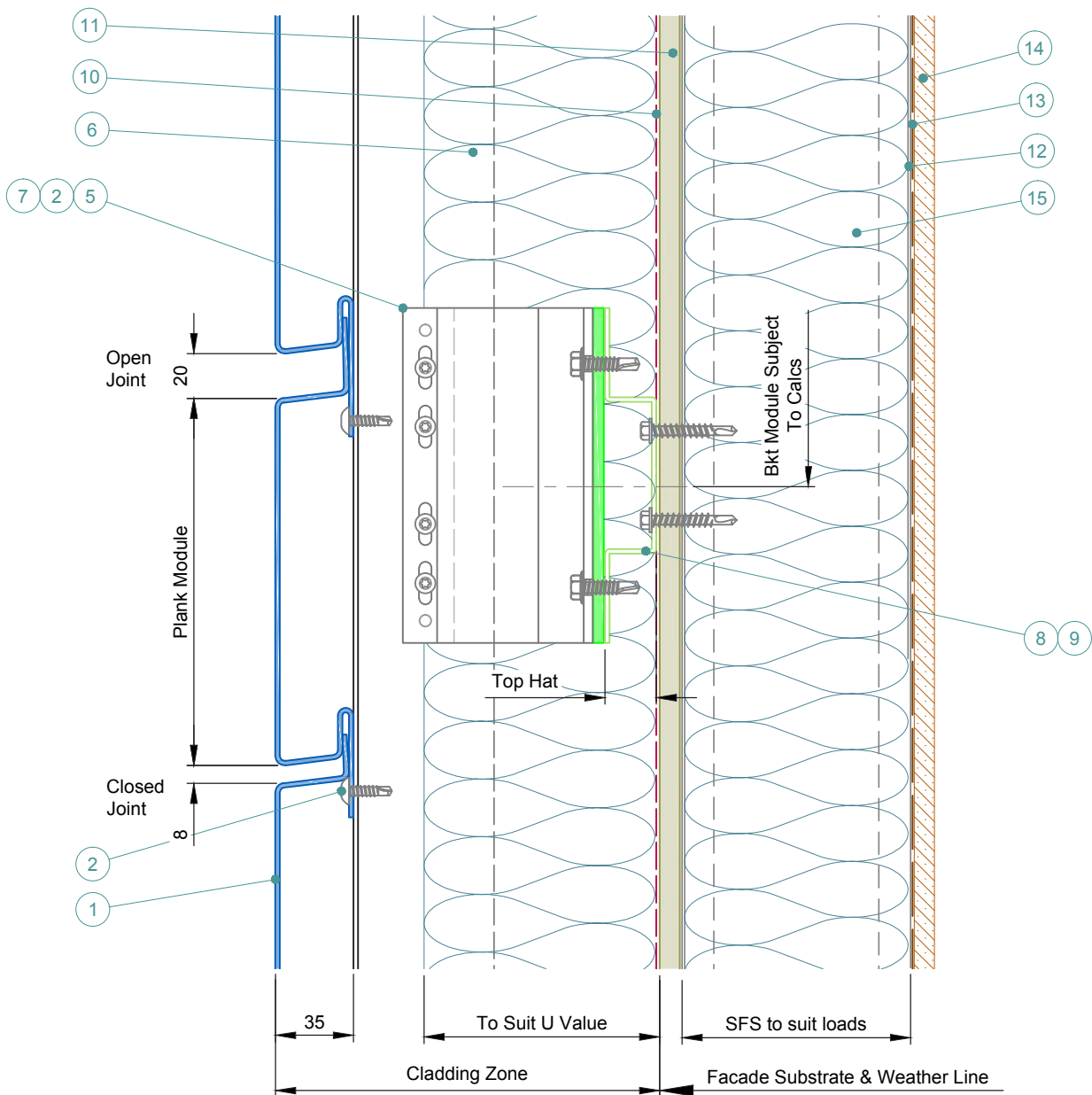


Sotech Ltd
 2 Traynor Way
 Whitehouse Business Park
 Peterlee
 County Durham
 SR8 2RU

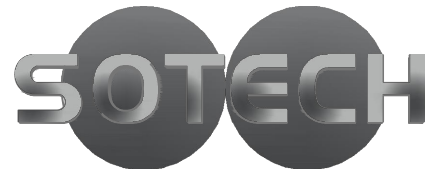
Tel: 0191 587 2287
 Fax: 0191 518 0703
 www.sotech-optima.co.uk

Title: Optima IPC
 Vertical Joint

Dwg No: IPC-01	Drawn By: DD	Date: 08.04.16
Scale: 1:3 @A4	Checked By: Sotech	Rev: A



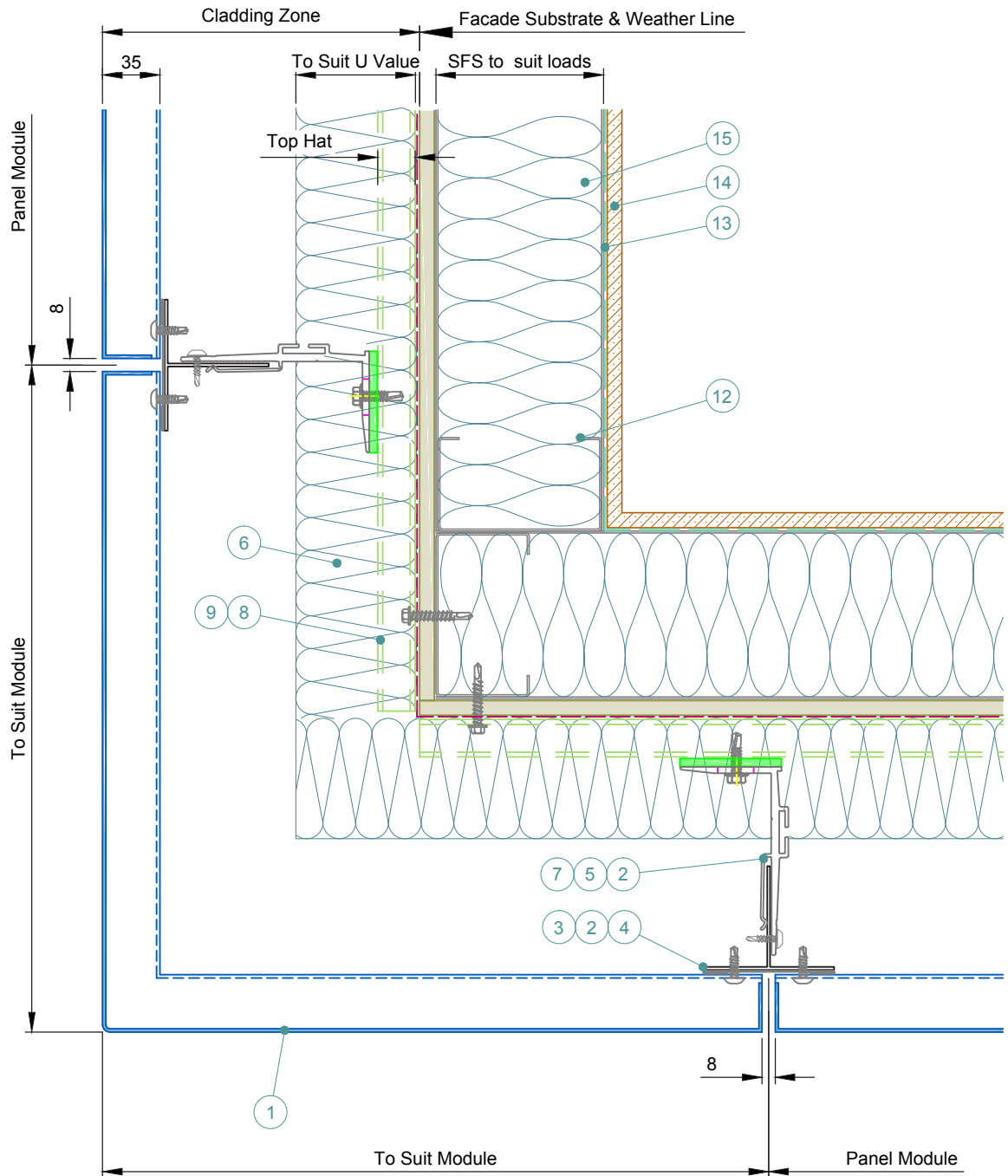
- 1 Optima IPC Panel. Finish to suit project.
- 2 Self Drill Fastener(Ejot JT4-ZT-4-4.8x19).
- 3 T Profile - 60/80
- 4 Optional Colour Match Strip
- 5 Nvelope Handsfree Bkt - to suit zone & ctrs to suit loadings.
- 6 Insulation - thickness & type to suit specification. By Others.
- 7 Isolator.
- 8 Tek Fixing - type to suit substrate material. By Others.
- 9 Top Hat - material to suit span. By Others.
- 10 Breathable Membrane. By Others.
- 11 Cemeticious Board (or simiar), thickness to suit specification. By Others.
- 12 SFS Substrate - profile size & centres to suit loadings. By Others.
- 13 V.C.L. - if required. By Others.
- 14 Internal Finish. By Others.
- 15 Insulation - If required. By Others.



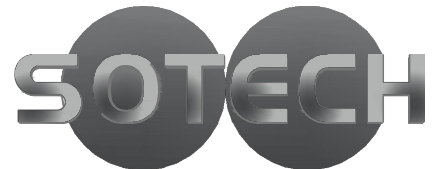
Sotech Ltd
 2 Traynor Way
 Whitehouse Business Park
 Peterlee
 County Durham
 SR8 2RU
 Tel: 0191 587 2287
 Fax: 0191 518 0703
 www.sotech-optima.co.uk

Title: Optima IPC
 Horizontal Joint

Drg No: IPC-02	Drawn By: DD	Date: 08.04.16
Scale: 1:3 @A4	Checked By: Sotech	Rev: A

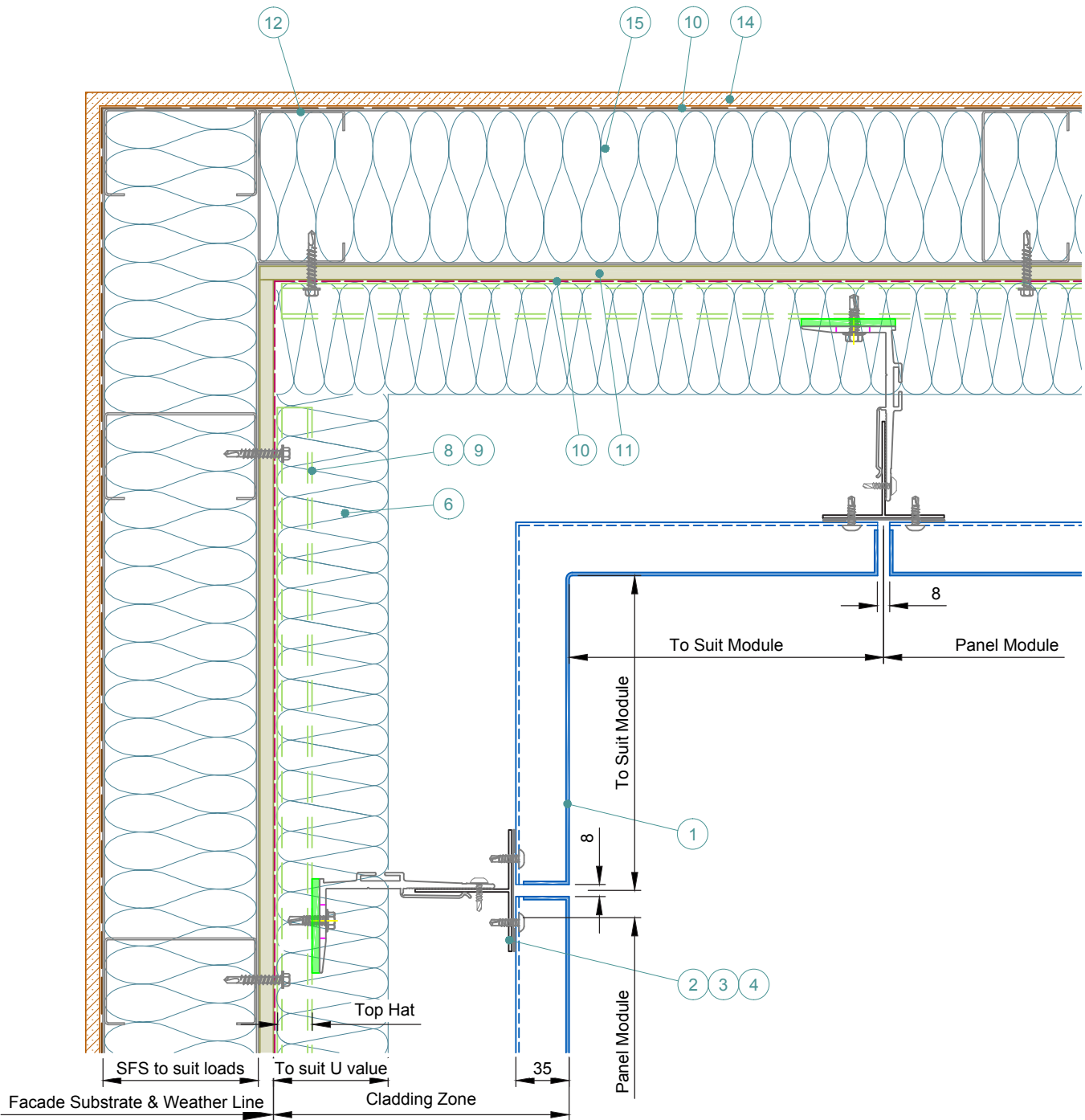


- 1 Optima IPC Panel. Finish to suit project.
- 2 Self Drill Fastener(Ejot JT4-ZT-4-4.8x19).
- 3 T Profile - 60/80
- 4 Optional Colour Match Strip
- 5 Nvelope Handsfree Bkt - to suit zone & ctrs to suit loadings.
- 6 Insulation - thickness & type to suit specification. By Others.
- 7 Isolator.
- 8 Tek Fixing - type to suit substrate material. By Others.
- 9 Top Hat - material to suit span. By Others.
- 10 Breathable Membrane. By Others.
- 11 Cemeticious Board (or simiar), thickness to suit specification. By Others.
- 12 SFS Substrate - profile size & centres to suit loadings. By Others.
- 13 V.C.L. - if required. By Others.
- 14 Internal Finish. By Others.
- 15 Insulation - If required. By Others.

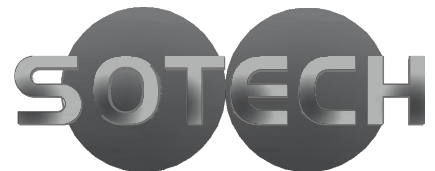


Sotech Ltd
 2 Traynor Way
 Whitehouse Business Park
 Peterlee
 County Durham
 SR8 2RU
 Tel: 0191 587 2287
 Fax: 0191 518 0703
 www.sotech-optima.co.uk

Title: Optima IPC External Corner		
Drg No: IPC-03	Drawn By: DD	Date: 08.04.16
Scale: 1:3 @A4	Checked By: Sotech	Rev: A



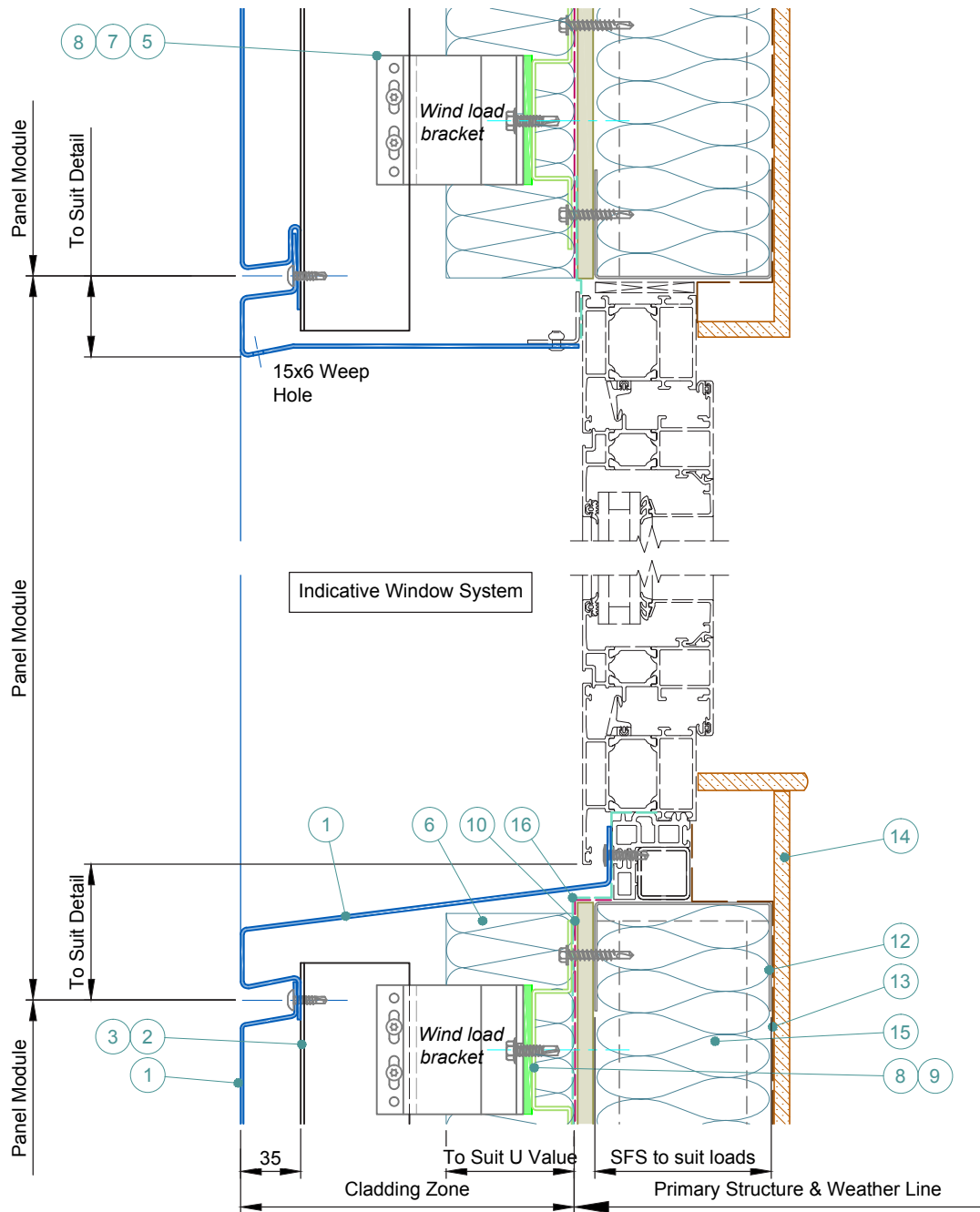
- 1 Optima IPC Panel. Finish to suit project.
- 2 Self Drill Fastener(Ejot JT4-ZT-4-4.8x19).
- 3 T Profile - 60/80
- 4 Optional Colour Match Strip
- 5 Nvelope Handsfree Bkt - to suit zone & ctrs to suit loadings.
- 6 Insulation - thickness & type to suit specification. By Others.
- 7 Isolator.
- 8 Tek Fixing - type to suit substrate material. By Others.
- 9 Top Hat - material to suit span. By Others.
- 10 Breathable Membrane. By others.
- 11 Cemeticitious Board (or simiar), thickness to suit specification. By Others.
- 12 SFS Substrate - profile size & centres to suit loadings. By Others.
- 13 V.C.L. - if required. By Others.
- 14 Internal Finish. By Others.
- 15 Insulation - If required. By Others.



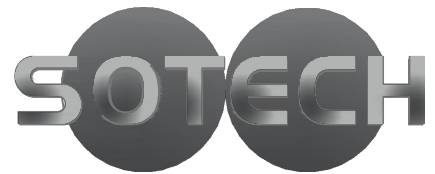
Sotech Ltd
 2 Traynor Way
 Whitehouse Business Park
 Peterlee
 County Durham
 SR8 2RU
 Tel: 0191 587 2287
 Fax: 0191 518 0703
 www.sotech-optima.co.uk

Title: Optima IPC
 Internal Corner

Drg No: IPC-04	Drawn By: DD	Date: 08.04.16
Scale: 1:3 @A4	Checked By: Sotech	Rev: A

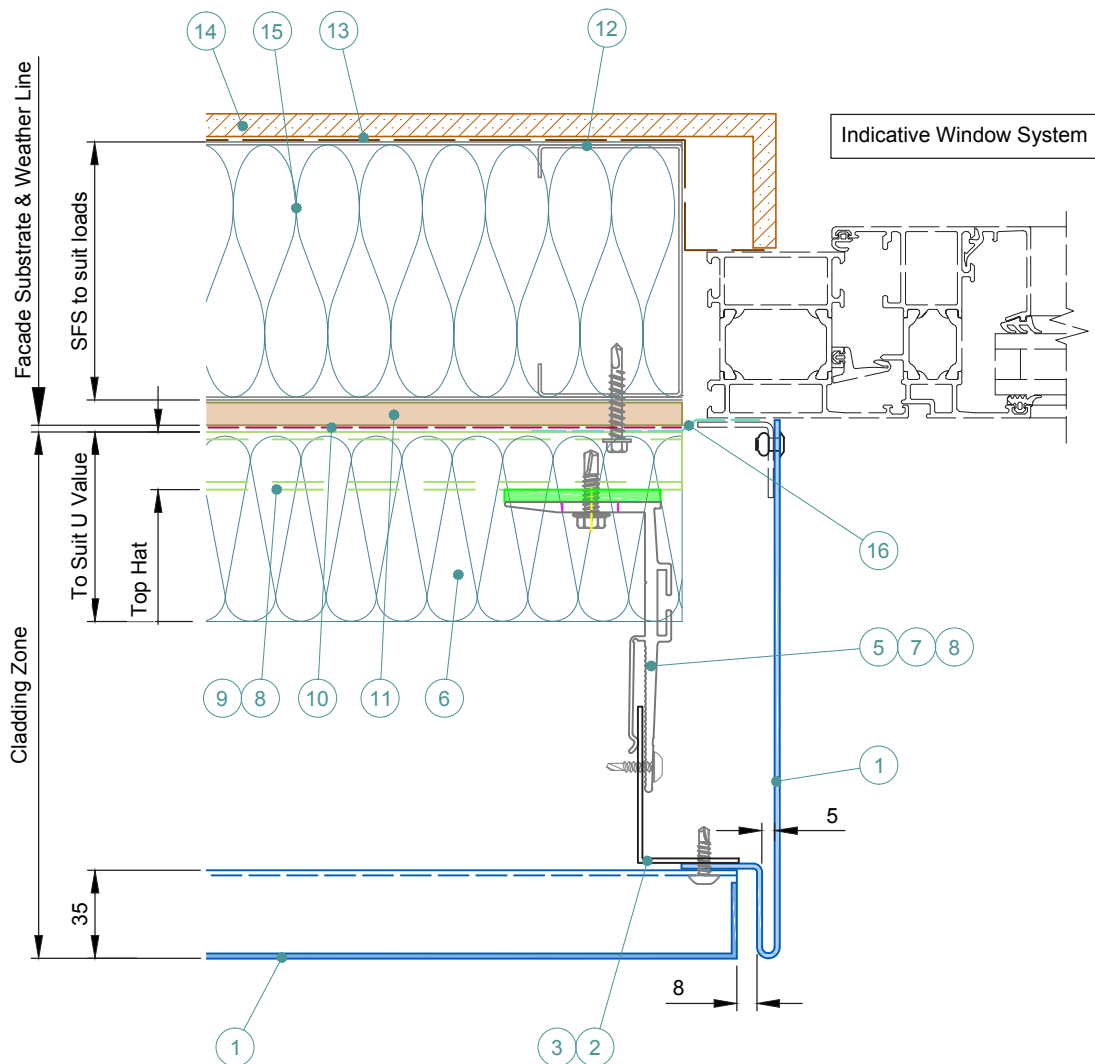


- 1 Optima IPC Panel. Finish to suit project.
- 2 Self Drill Fastener(Ejot JT4-ZT-4-4.8x19).
- 3 T Profile - 60/80
- 4 Optional Colour Match Strip
- 5 Nvelope Handsfree Bkt - to suit zone & ctrs to suit loadings.
- 6 Insulation - thickness & type to suit specification. By Others.
- 7 Isolator.
- 8 Tek Fixing - type to suit substrate material. By Others.
- 9 Top Hat - material to suit span. By Others.
- 10 Breathable Membrane. By Others.
- 11 Cemeticitious Board (or simiar), thickness to suit specification. By Others.
- 12 SFS Substrate - profile size & centres to suit loadings. By Others.
- 13 V.C.L. - if required. By Others.
- 14 Internal Finish. By Others.
- 15 Insulation - If required. By Others.
- 16 EPDM or similar. By Others.

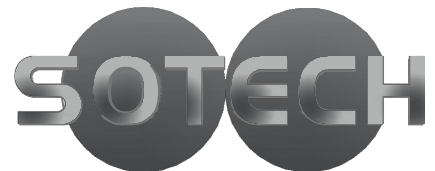


Sotech Ltd
 2 Traynor Way
 Whitehouse Business Park
 Peterlee
 County Durham
 SR8 2RU
 Tel: 0191 587 2287
 Fax: 0191 518 0703
 www.sotech-optima.co.uk

Title: Optima IPC Horizontal Panel Window Interface		
Dwg No: IPC-05	Drawn By: DD	Date: 08.04.16
Scale: 1:4 @A4	Checked By: Sotech	Rev: A



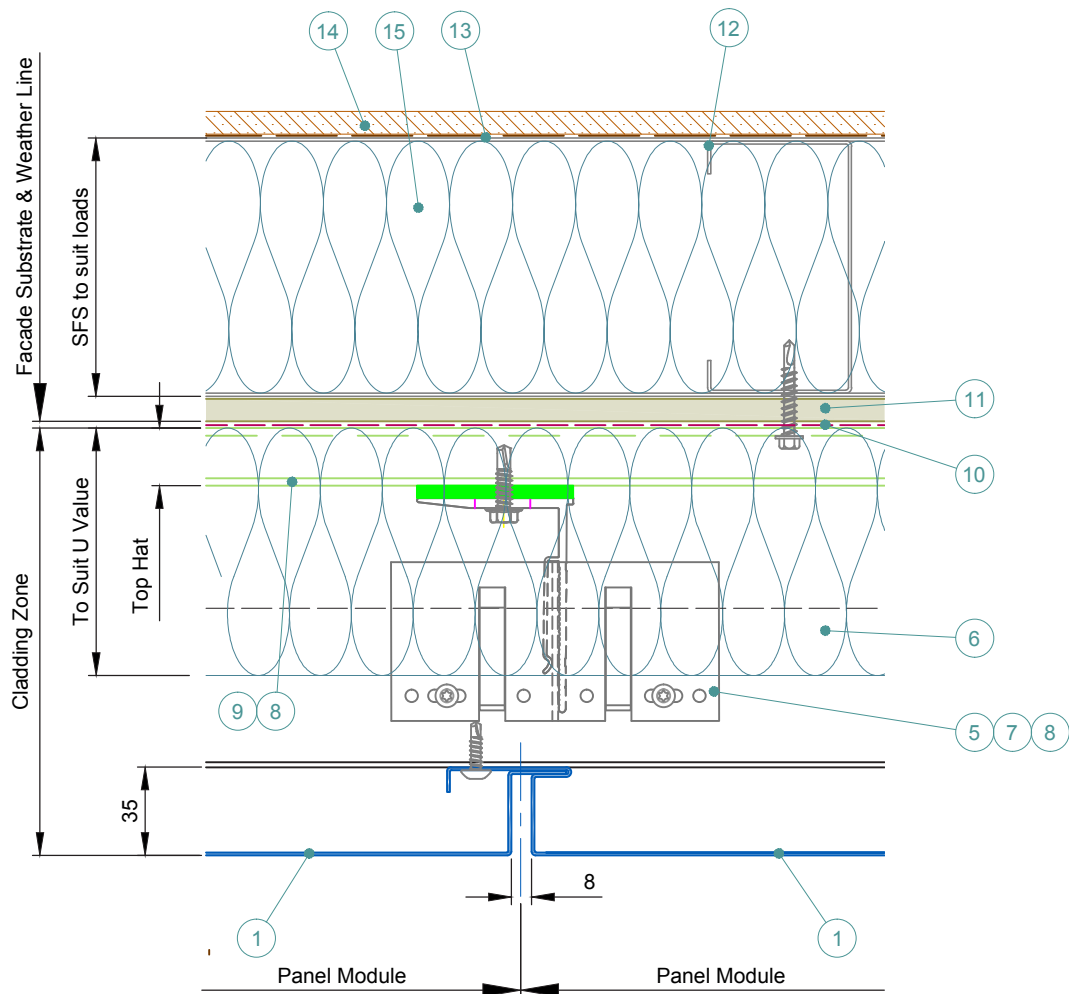
- 1 Optima IPC Panel. Finish to suit project.
- 2 Self Drill Fastener(Ejot JT4-ZT-4-4.8x19).
- 3 T Profile - 60/80
- 4 Optional Colour Match Strip
- 5 Nvelope Handsfree Bkt - to suit zone & ctrs to suit loadings.
- 6 Insulation - thickness & type to suit specification. By Others.
- 7 Isolator.
- 8 Tek Fixing - type to suit substrate material. By Others.
- 9 Top Hat - material to suit span. By Others.
- 10 Breathable Membrane. By Others.
- 11 Cementitious Board (or similar), thickness to suit specification. By Others.
- 12 SFS Substrate - profile size & centres to suit loadings. By Others.
- 13 V.C.L. - if required. By Others.
- 14 Internal Finish. By Others.
- 15 Insulation - If required. By Others.
- 16 EPDM or similar. By Others.



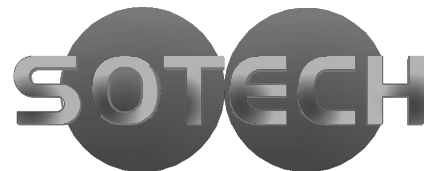
Sotech Ltd
 2 Traynor Way
 Whitehouse Business Park
 Peterlee
 County Durham
 SR8 2RU
 Tel: 0191 587 2287
 Fax: 0191 518 0703
 www.sotech-optima.co.uk

Title: Optima IPC
 Horizontal Panel Window Jamb Detail

Dwg No: IPC-06	Drawn By: DD	Date: 08.04.16
Scale: 1:3 @A4	Checked By: Sotech	Rev: A

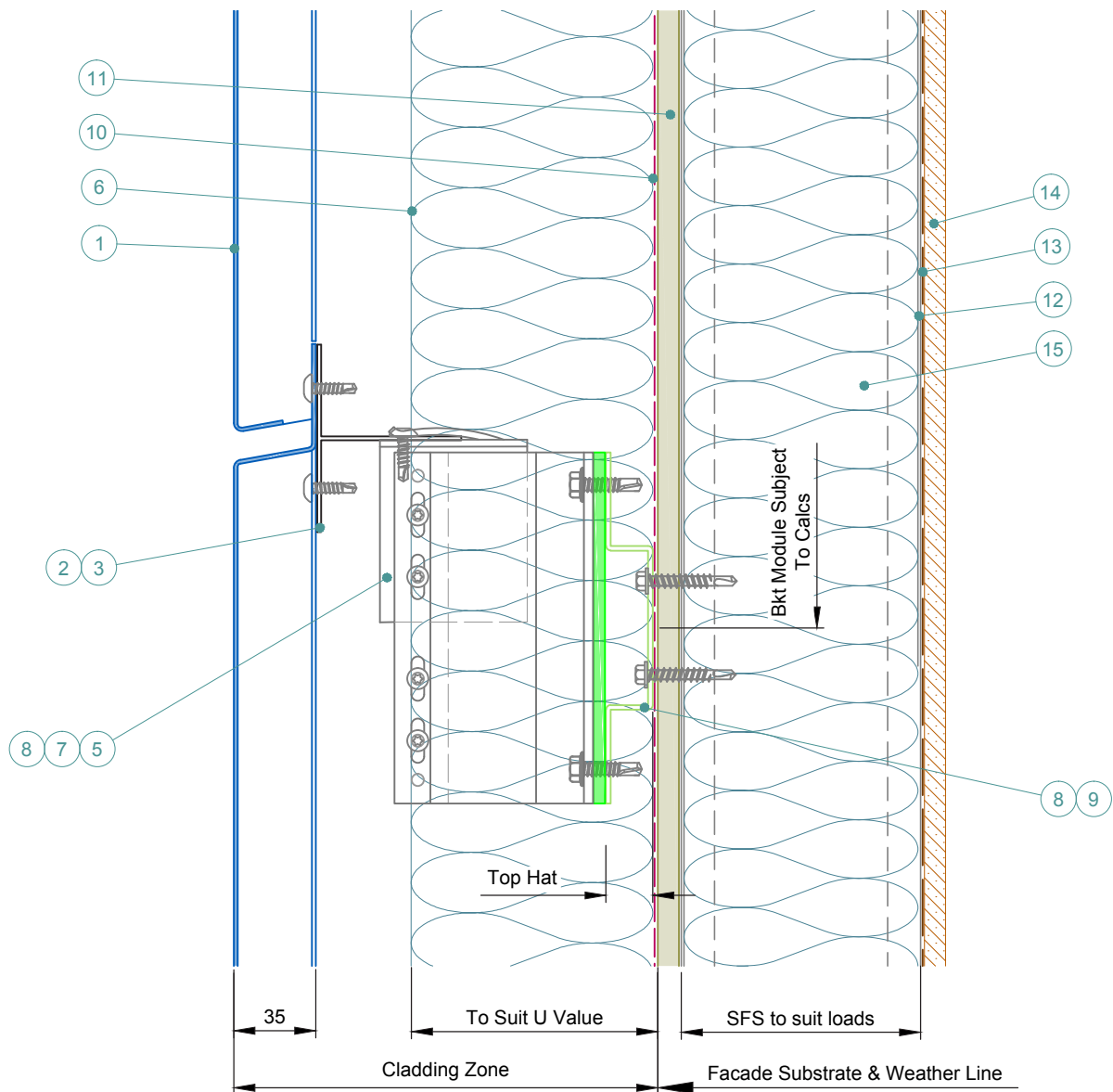


- 1 Optima IPC Panel. Finish to suit project.
- 2 Self Drill Fastener(Ejot JT4-ZT-4-4.8x19).
- 3 T Profile - 60/80
- 4 Optional Colour Match Strip
- 5 Nvelope Handsfree NH2 Bkt system - to suit zone & ctrs to suit loadings.
- 6 Insulation - thickness & type to suit specification. By Others.
- 7 Isolator.
- 8 Tek Fixing - type to suit substrate material. By Others.
- 9 Top Hat - material to suit span. By Others.
- 10 Breathable Membrane. By Others.
- 11 Cementitious Board (or simiar), thickness to suit specification. By Others.
- 12 SFS Substrate - profile size & centres to suit loadings. By Others.
- 13 V.C.L. - if required. By Others.
- 14 Internal Finish. By Others.
- 15 Insulation - If required. By Others.
- 16 EPDM or similar. By Others.

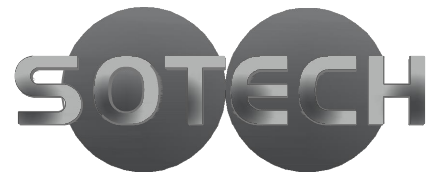


Sotech Ltd
 2 Traynor Way
 Whitehouse Business Park
 Peterlee
 County Durham
 SR8 2RU
 Tel: 0191 587 2287
 Fax: 0191 518 0703
 www.sotech-optima.co.uk

Title: Optima IPC Vertical Panel Joint		
Dwg No: IPC-07	Drawn By: DD	Date: 08.04.16
Scale: 1:3 @A4	Checked By: Sotech	Rev: A



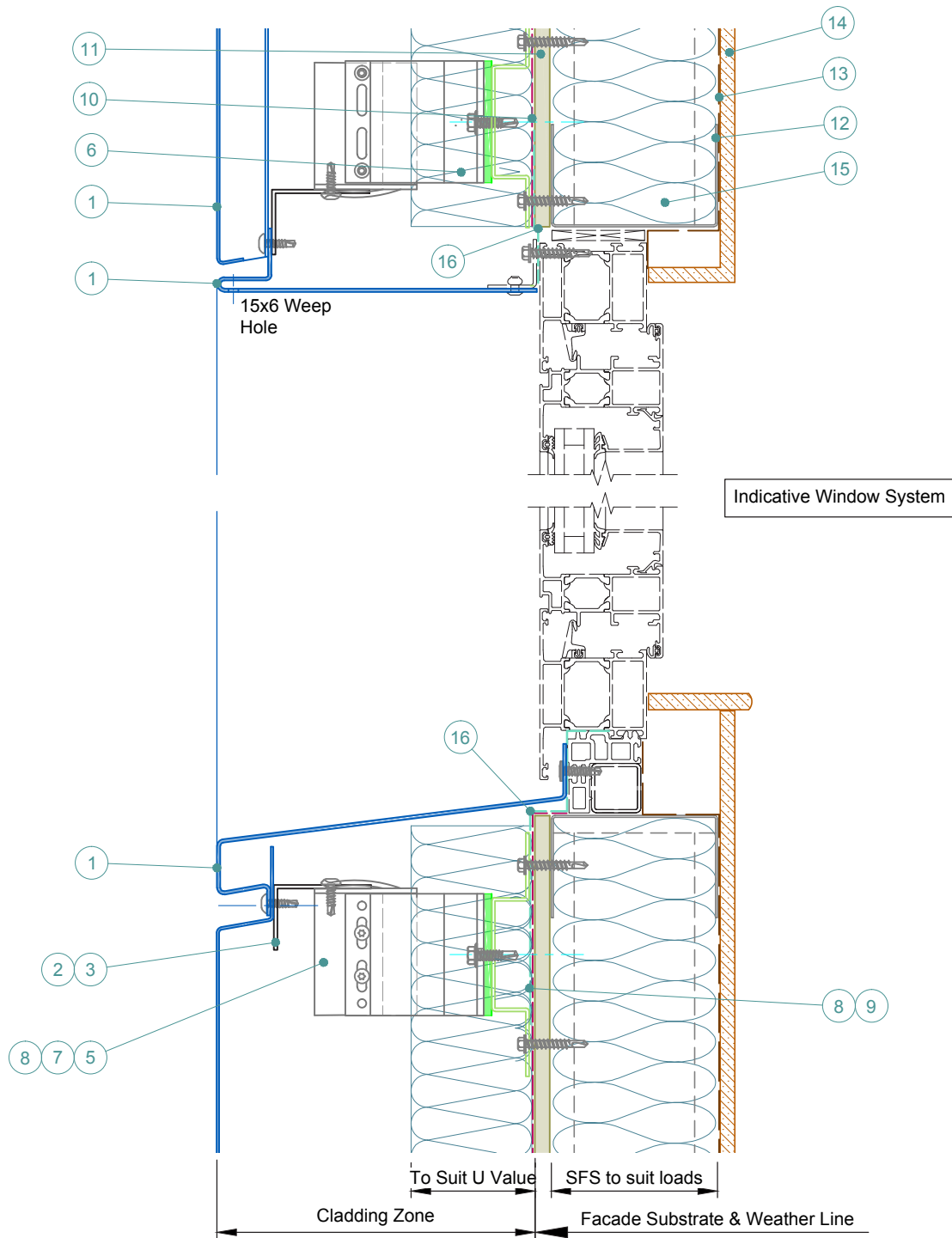
- 1 Optima IPC Panel. Finish to suit project.
- 2 Self Drill Fastener(Ejot JT4-ZT-4-4.8x19).
- 3 T Profile - 60/80
- 4 Optional Colour Match Strip
- 5 Nvelope Handsfree NH2 Bkt System - to suit zone & ctrs to suit loadings.
- 6 Insulation - thickness & type to suit specification. By Others.
- 7 Isolator.
- 8 Tek Fixing - type to suit substrate material. By Others.
- 9 Top Hat - material to suit span. By Others.
- 10 Breathable Membrane. By Others.
- 11 Cemetitious Board (or simiar), thickness to suit specification. By Others.
- 12 SFS Substrate - profile size & centres to suit loadings. By Others.
- 13 V.C.L. - if required. By Others.
- 14 Internal Finish. By Others.
- 15 Insulation - If required. By Others.
- 16 EPDM or similar. By Others.



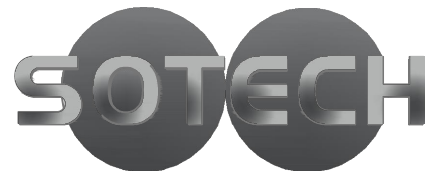
Sotech Ltd
 2 Traynor Way
 Whitehouse Business Park
 Peterlee
 County Durham
 SR8 2RU
 Tel: 0191 587 2287
 Fax: 0191 518 0703
 www.sotech-optima.co.uk

Title: Optima IPC
 Vertical Panel, Horizontal Joint

Dwg No: IPC-08	Drawn By: DD	Date: 08.04.16
Scale: 1:3 @A4	Checked By: Sotech	Rev: A



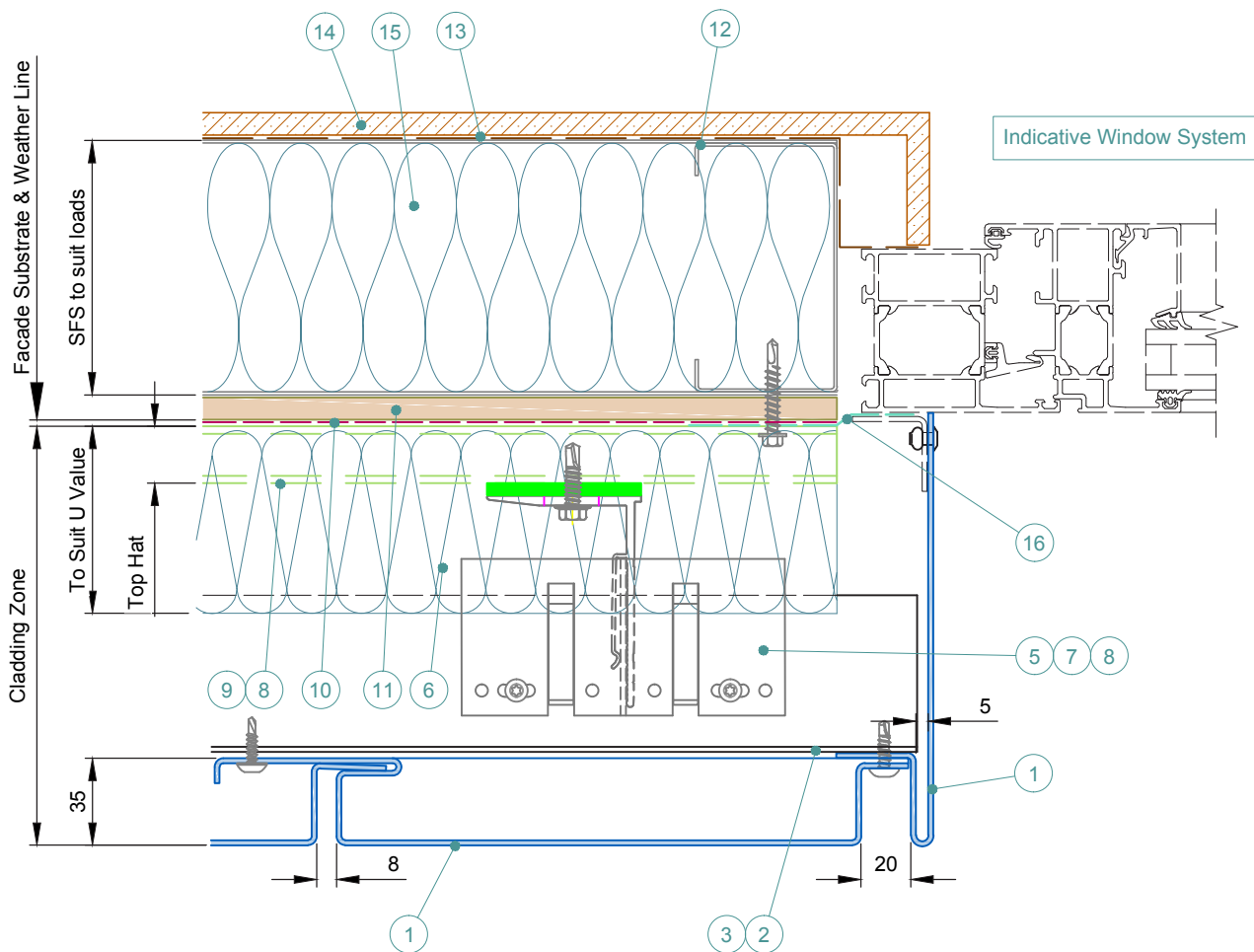
- 1 Optima IPC Panel. Finish to suit project.
- 2 Self Drill Fastener(Ejot JT4-ZT-4-4.8x19).
- 3 T Profile - 60/80
- 4 Optional Colour Match Strip
- 5 Nvelope Handsfree NH2 Bkt System - to suit zone & ctrs to suit loadings.
- 6 Insulation - thickness & type to suit specification. By Others.
- 7 Isolator.
- 8 Tek Fixing - type to suit substrate material. By Others.
- 9 Top Hat - material to suit span. By Others.
- 10 Breathable Membrane. By Others.
- 11 Cemeticious Board (or simiar), thickness to suit specification. By Others.
- 12 SFS Substrate - profile size & centres to suit loadings. By Others.
- 13 V.C.L. - if required. By Others.
- 14 Internal Finish. By Others.
- 15 Insulation - If required. By Others.
- 16 EPDM or similar. By Others.



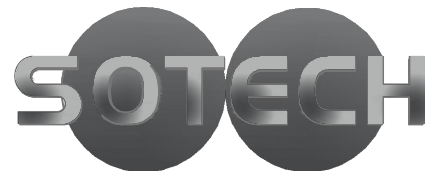
Sotech Ltd
 2 Traynor Way
 Whitehouse Business Park
 Peterlee
 County Durham
 SR8 2RU
 Tel: 0191 587 2287
 Fax: 0191 518 0703
 www.sotech-optima.co.uk

Title: Optima IPC
 Horizontal Panel, Alternative Head Detail

Dwg No: IPC-09	Drawn By: DD	Date: 08.04.16
Scale: 1:4 @A4	Checked By: Sotech	Rev: A



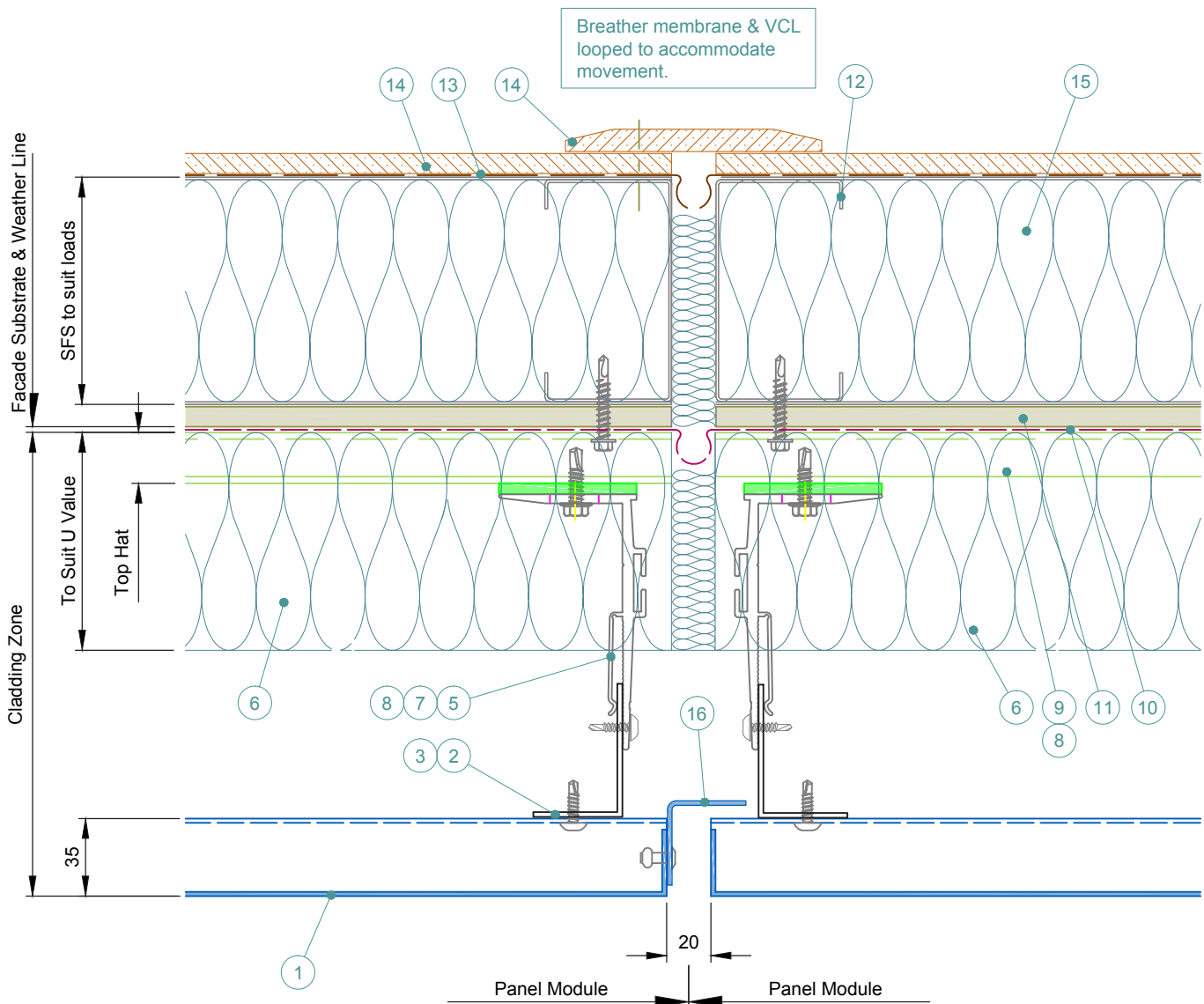
- 1 Optima IPC Panel. Finish to suit project.
- 2 Self Drill Fastener(Ejot JT4-ZT-4-4.8x19).
- 3 T Profile - 60/80
- 4 Optional Colour Match Strip
- 5 Nvelope Handsfree NH2 Bkt System - to suit zone & ctrs to suit loadings.
- 6 Insulation - thickness & type to suit specification.
- 7 Isolator.
- 8 Tek Fixing - type to suit substrate material.
- 9 Top Hat - material to suit span.
- 10 Breathable Membrane.
- 11 Cementitious Board (or simiar) - with fully taped joints & thickness to suit specification.
- 12 SFS Substrate - profile size & centres to suit loadings.
- 13 V.C.L. - if required.
- 14 Internal Finish.
- 15 Insulation - If required.
- 16 EPDM or similar.



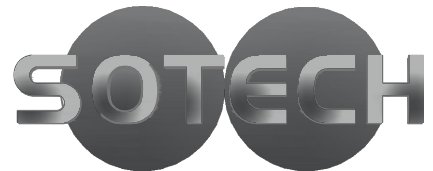
Sotech Ltd
 2 Traynor Way
 Whitehouse Business Park
 Peterlee
 County Durham
 SR8 2RU
 Tel: 0191 587 2287
 Fax: 0191 518 0703
 www.sotech-optima.co.uk

Title: Optima IPC
 Vertical Laid Panels - Window Jamb

Drg No: IPC-10	Drawn By: DD	Date: 08.04.16
Scale: 1:4 @A4	Checked By: Sotech	Rev: A



- 1 Optima IPC Panel. Finish to suit project.
- 2 Self Drill Fastener(Ejot JT4-ZT-4-4.8x19).
- 3 L Profile - 60/40
- 4 Optional Colour Match Strip
- 5 Nvelope Handsfree Bkt - to suit zone & ctrs to suit loadings.
- 6 Insulation - thickness & type to suit specification. By Others.
- 7 Isolator.
- 8 Tek Fixing - type to suit substrate material. By Others.
- 9 Top Hat - material to suit span. By Others.
- 10 Breathable Membrane. By Others.
- 11 Cemeticious Board (or simiar), thickness to suit specification. By Others.
- 12 SFS Substrate - profile size & centres to suit loadings. By Others.
- 13 V.C.L. - if required. By Others.
- 14 Internal Finish. By Others.
- 15 Insulation - If required. By Others.
- 16 Aluminium Pressing.



Sotech Ltd
 2 Traynor Way
 Whitehouse Business Park
 Peterlee
 County Durham
 SR8 2RU
 Tel: 0191 587 2287
 Fax: 0191 518 0703
 www.sotech-optima.co.uk

Title: Optima IPC
 Horizontal Panel, Vertical Movement Joint

Drg No: IPC-11	Drawn By: DD	Date: 08.04.16
Scale: 1:3 @A4	Checked By: Sotech	Rev: A