



6 SIZES • 30 COLOURS • 6 FINISHES

# PROGRAM



**SOLUS**  
CERAMICS

Unit 1, Cole River Park, 285 Warwick Road, Birmingham, B11 2QX  
T: 0121 753 0777 E: sales@solusceramics.com [www.solusceramics.com](http://www.solusceramics.com)



6 SIZES • 30 COLOURS • 6 FINISHES  
**PROGRAM**



2web20717



2web20722



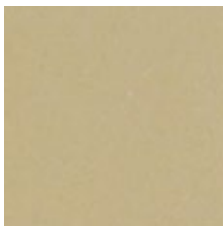
2web20725



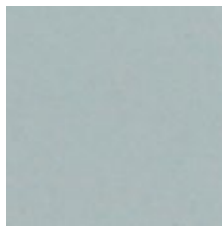
2web20724



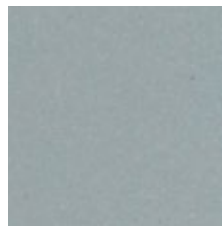
2web20728



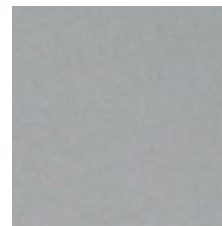
2web20723



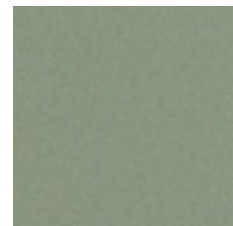
2web20727



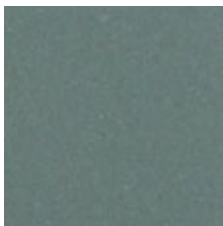
2web20730



2web20726



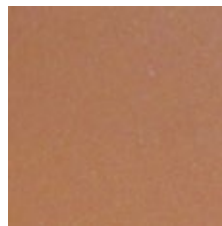
2web20731



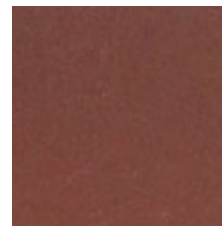
2web20718



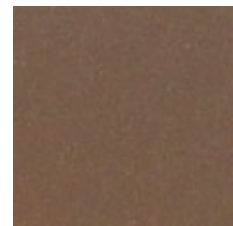
2web20714



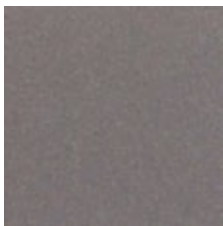
2web20713



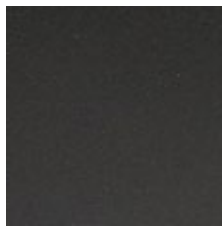
2web20719



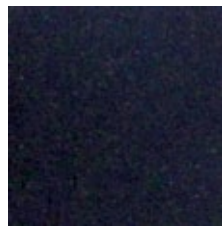
2web20721



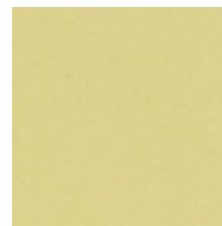
2web20716



2web20787



2web20715



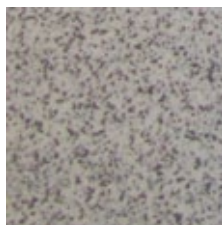
2web20729



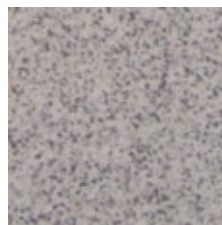
2web20737



2web20741



2web20732



2web20734



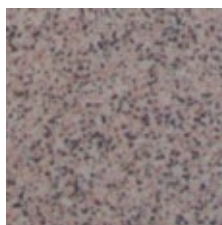
2web20740



2web20720



2web20739



2web20733



2web20735



2web20736



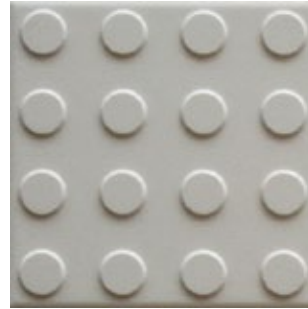
2web20738



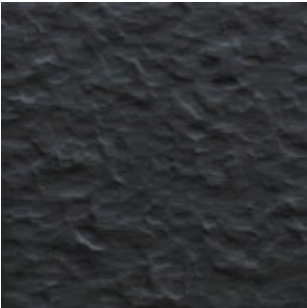
**Matt Finish**



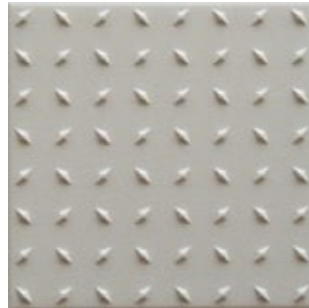
**Lyda Finish**



**Cetus Finish**



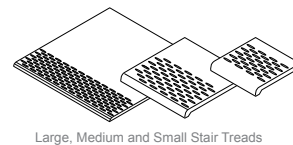
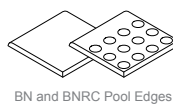
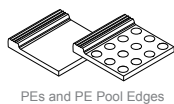
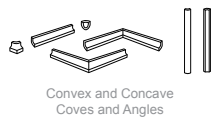
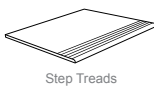
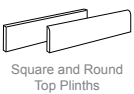
**Ebano Finish**



**Tyber Finish**

## Special Pieces

Please call for details of our full range of special pieces.












	75x150 8mm	100x100 8mm	100x115 8mm	150x150 8mm	100x300 8mm	300x300 8mm
2web20717	Ma	Ma, Ty, Ce, Eb, Ly	Hex	Ma, Ty, Ce, Eb, Ly	Ma	Ma, Eb
2web20722	Ma	Ma, Ty, Ce, Eb, Ly	Hex	Ma, Ty, Ce, Eb, Ly	Ma	Ma, Eb
2web20725	Ma	Ma, Ty, Ce, Eb, Ly	Hex	Ma, Ty, Ce, Eb, Ly	Ma	Ma, Eb
2web20724		Ma, Ty, Ce, Eb, Ly		Ma, Ty, Ce, Eb, Ly		
2web20728	Ma	Ma, Ty, Ce, Eb, Ly		Ma, Ty, Ce, Eb, Ly		
2web20723	Ma	Ma, Ty, Ce, Eb, Ly	Hex	Ma, Ty, Ce, Eb, Ly	Ma	Ma
2web20727	Ma	Ma, Ty, Ce, Eb, Ly		Ma, Ty, Ce, Eb, Ly	Ma	
2web20730		Ma, Ty, Ce, Eb, Ly		Ma, Ty, Ce, Eb, Ly		
2web20726	Ma	Ma, Ty, Ce, Eb, Ly	Hex	Ma, Ty, Ce, Eb, Ly	Ma	Ma, Eb
2web20731		Ma, Ty, Ce, Eb, Ly		Ma, Ty, Ce, Eb, Ly		
2web20718	Ma	Ma, Ty, Ce, Eb, Ly	Hex	Ma, Ty, Ce, Eb, Ly	Ma	
2web20714	Ma	Ma, Ty, Ce, Eb, Ly	Hex	Ma, Ty, Ce, Eb, Ly	Ma	Ma, Eb
2web20713	Ma	Ma, Ty, Ce, Eb, Ly		Ma, Ty, Ce, Eb, Ly	Ma	Ma, Eb
2web20719	Ma	Ma, Ty, Ce, Eb, Ly	Hex	Ma, Ty, Ce, Eb, Ly	Ma	Ma, Eb
2web20721	Ma	Ma, Ty, Ce, Eb, Ly	Hex	Ma, Ty, Ce, Eb, Ly	Ma	Ma, Eb
2web20716	Ma	Ma, Ty, Ce, Eb, Ly	Hex	Ma, Ty, Ce, Eb, Ly	Ma	Ma, Eb
2web20787	Ma	Ma, Ty, Ce, Eb, Ly	Hex	Ma, Ty, Ce, Eb, Ly	Ma	Ma, Eb
2web20715	Ma	Ma, Ty, Ce, Eb, Ly	Hex	Ma, Ty, Ce, Eb, Ly	Ma	Ma, Eb
2web20729		Ma, Ty, Ce, Eb, Ly		Ma, Ty, Ce, Eb, Ly		
2web20737	Ma	Ma, Ty, Ce, Eb, Ly		Ma, Ty, Ce, Eb, Ly	Ma	Ma, Eb
2web20741		Ma, Ty, Ce, Eb, Ly		Ma, Ty, Ce, Eb, Ly	Ma	Ma, Eb
2web20732		Ma, Ty, Ce, Eb, Ly		Ma, Ty, Ce, Eb, Ly		
2web20734		Ma, Ty, Ce, Eb, Ly		Ma, Ty, Ce, Eb, Ly		
2web20740		Ma, Ty, Ce, Eb, Ly		Ma, Ty, Ce, Eb, Ly	Ma	Ma, Eb
2web20720	Ma	Ma, Ty, Ce, Eb, Ly	Hex	Ma, Ty, Ce, Eb, Ly	Ma	Ma, Eb
2web20739		Ma, Ty, Ce, Eb, Ly		Ma, Ty, Ce, Eb, Ly		
2web20733		Ma, Ty, Ce, Eb, Ly		Ma, Ty, Ce, Eb, Ly		
2web20735		Ma, Ty, Ce, Eb, Ly		Ma, Ty, Ce, Eb, Ly		
2web20736		Ma, Ty, Ce, Eb, Ly		Ma, Ty, Ce, Eb, Ly		
2web20738		Ma, Ty, Ce, Eb, Ly		Ma, Ty, Ce, Eb, Ly		




Ma Matt Ty Tyber R12 V7 (B+C) Ce Cetus R11 V6 (B+C) Eb Ebano R12 V5 (B+C) Ly Lyda R11 V5 (B+C) Hex Hex Matt R10

Matt finish is available in R9(300x300mm) and R10(100x100,150x150mm)

30x30mm Mosaics available in all colours in a Matt finish.

	Dimensions and Surface Quality	ISO 10545-2 Conforms
	Water Absorption	ISO 10545-3 ≤ 0.1 %
	Breaking Strength	ISO 10545-4 ≥ 1800 N/mm <sup>2</sup>
	Deep Abrasion Resistance	ISO 10545-6 123 mm <sup>3</sup>

	Linear Thermal Expansion	ISO 10545-8 5.6 x 10 <sup>-6</sup> °C
	Thermal Shock Resistance	ISO 10545-9 Conforms
	Moisture Expansion	ISO 10545-10 < 0.1 mm/m
	Frost Resistance	ISO 10545-12 Conforms

	Chemical Resistance	ISO 10545-13 Conforms
	Stain Resistance	ISO 10545-14 Conforms
	Slip Resistance	DIN 51130 - 51097 See above

On request tiles can be tested to PTV BS7976-2. HSE surface roughness and NCS Colour values are also available.

